

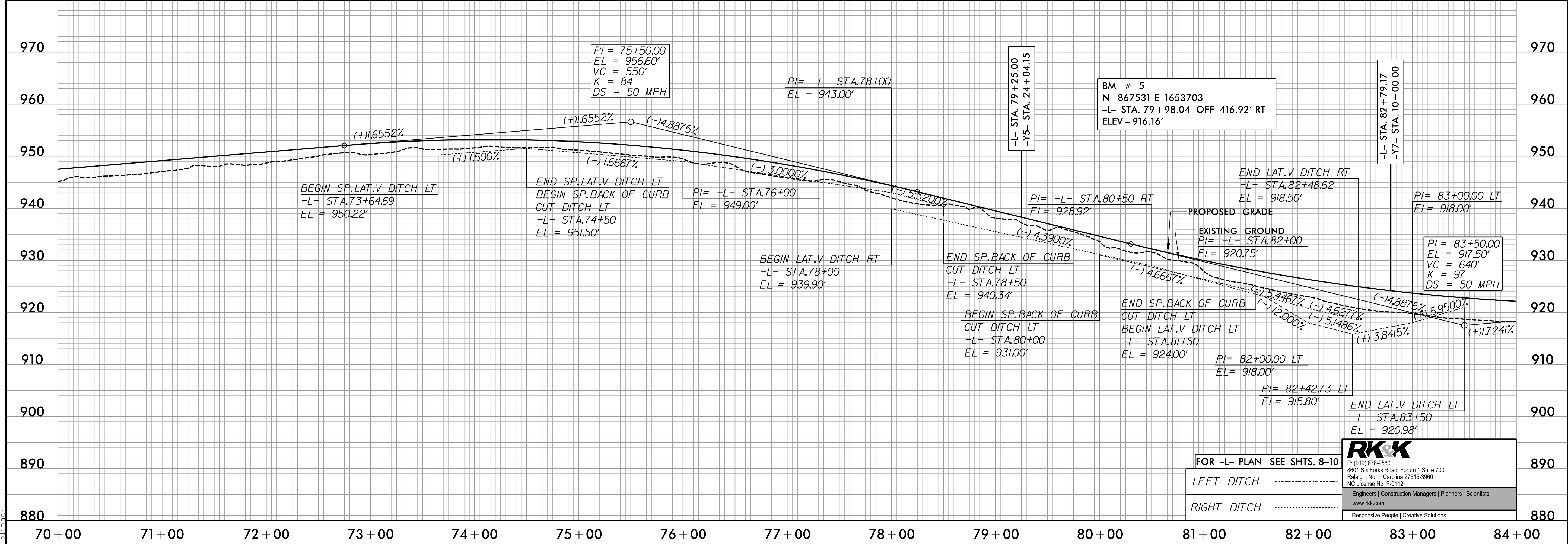
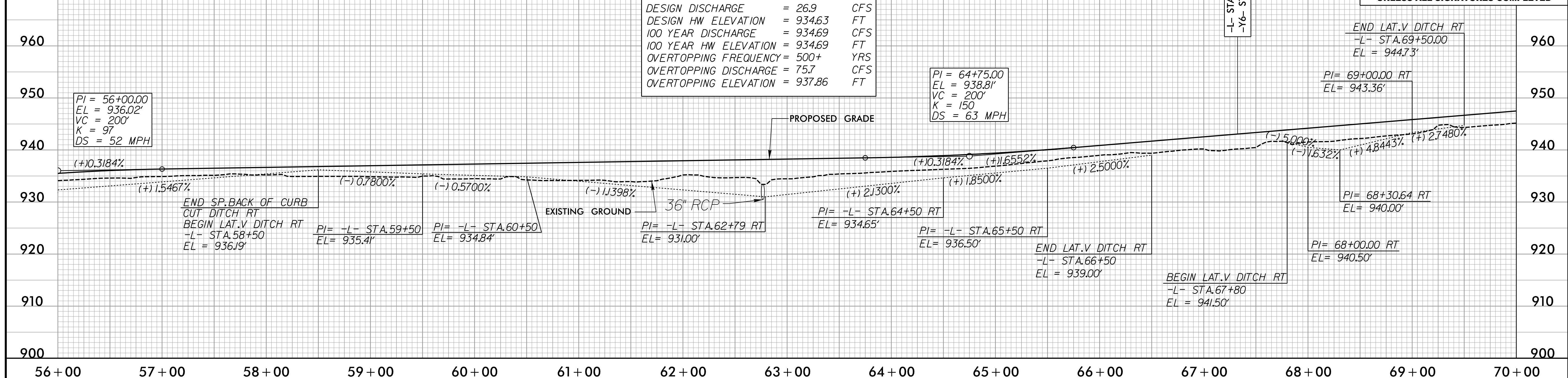
5/28/99
R:\Projects\2003\Projects\Pro\N\2577A\RD\p133.dgn

PROJECT REFERENCE NO. R-2577A	SHEET NO. 33
ROADWAY DESIGN ENGINEER	HYDRAULICS ENGINEER

PIPE HYDRAULIC DATA
 36" RCP
 -L- STA.62+79.54

DRAINAGE AREA	= 8.46	AC
DESIGN FREQUENCY	= 50	YRS
DESIGN DISCHARGE	= 26.9	CFS
DESIGN HW ELEVATION	= 934.63	FT
100 YEAR DISCHARGE	= 934.69	CFS
100 YEAR HW ELEVATION	= 934.69	FT
OVERTOPPING FREQUENCY	= 500+	YRS
OVERTOPPING DISCHARGE	= 75.7	CFS
OVERTOPPING ELEVATION	= 937.86	FT

**DOCUMENT NOT CONSIDERED FINAL
UNLESS ALL SIGNATURES COMPLETED**



FOR -L- PLAN SEE SHTS. 8-10

LEFT DITCH
 RIGHT DITCH

RK&K
 P: (919) 878-8560
 8801 Six Forks Road, Forum 1, Suite 700
 Raleigh, North Carolina 27615-3960
 NC License No. F-0112
 Engineers | Construction Managers | Planners | Scientists
 www.rkk.com
 Responsive People | Creative Solutions