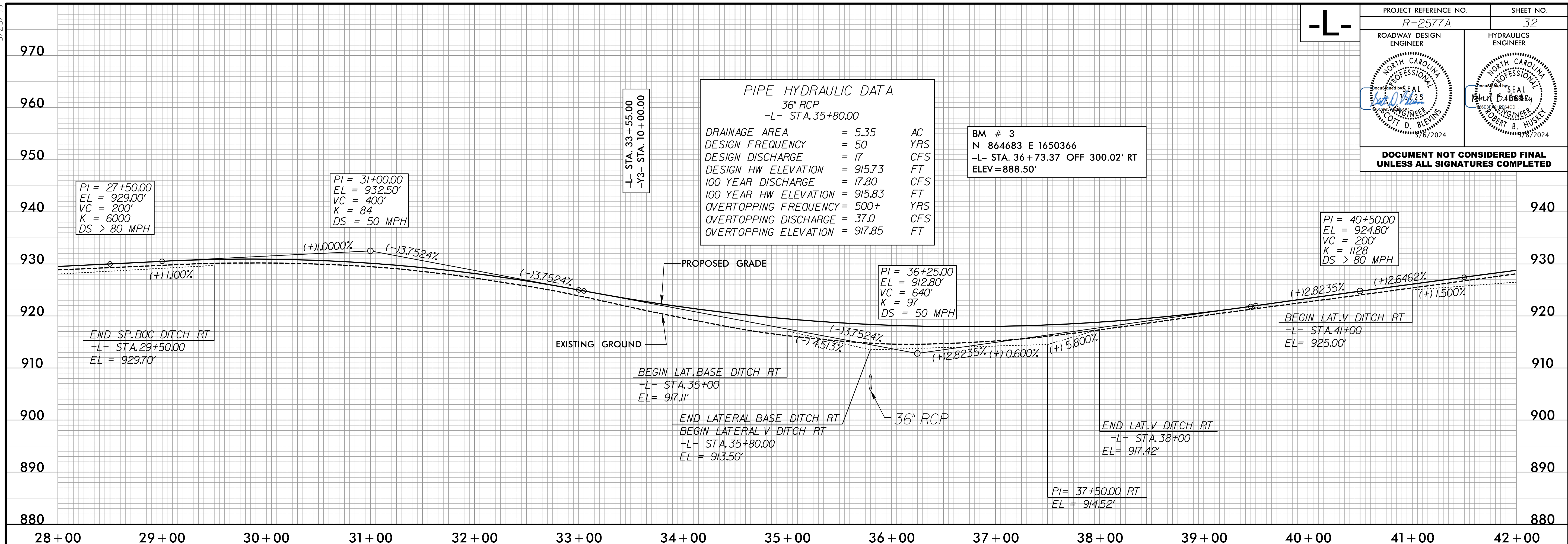


5/28/24

-L-

PROJECT REFERENCE NO. R-2577A	SHEET NO. 32
ROADWAY DESIGN ENGINEER	HYDRAULICS ENGINEER

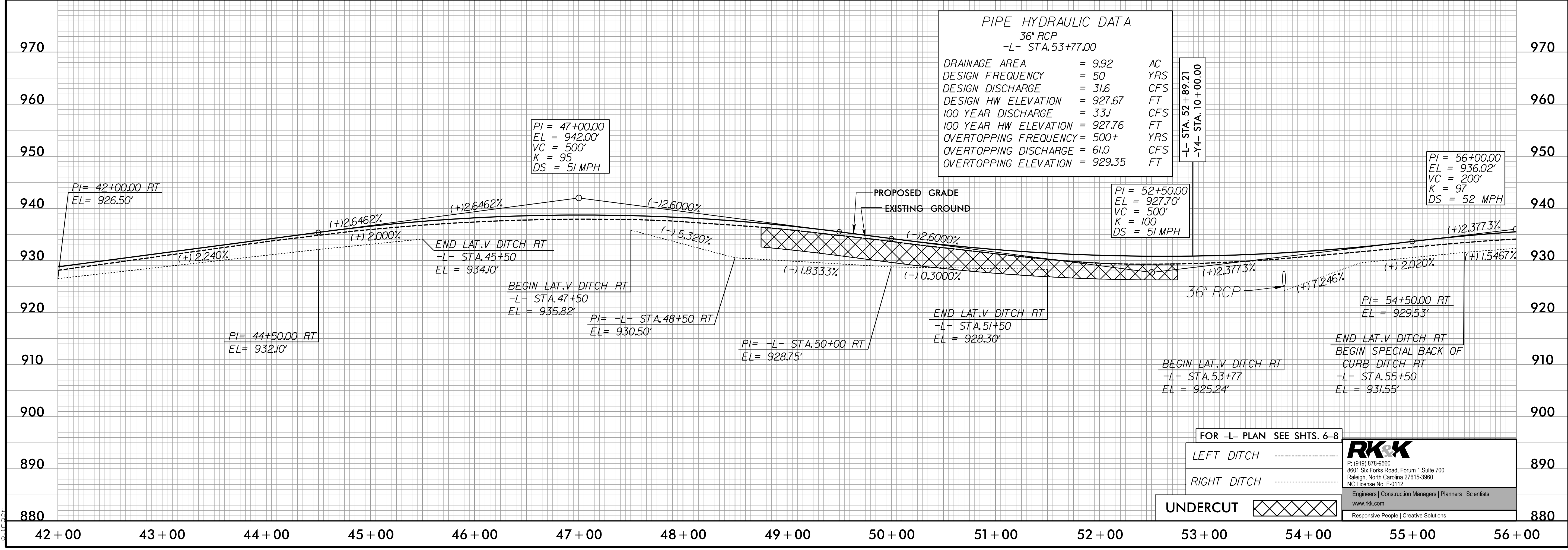
DOCUMENT NOT CONSIDERED FINAL UNLESS ALL SIGNATURES COMPLETED



PIPE HYDRAULIC DATA
36" RCP
-L- STA. 35+80.00

DRAINAGE AREA	= 5.35	AC
DESIGN FREQUENCY	= 50	YRS
DESIGN DISCHARGE	= 17	CFS
DESIGN HW ELEVATION	= 915.73	FT
100 YEAR DISCHARGE	= 17.80	CFS
100 YEAR HW ELEVATION	= 915.83	FT
OVERTOPPING FREQUENCY	= 500+	YRS
OVERTOPPING DISCHARGE	= 37.0	CFS
OVERTOPPING ELEVATION	= 917.85	FT

BM # 3
N 864683 E 1650366
-L- STA. 36+73.37 OFF 300.02' RT
ELEV=888.50'



PIPE HYDRAULIC DATA
36" RCP
-L- STA. 53+77.00

DRAINAGE AREA	= 9.92	AC
DESIGN FREQUENCY	= 50	YRS
DESIGN DISCHARGE	= 31.6	CFS
DESIGN HW ELEVATION	= 927.67	FT
100 YEAR DISCHARGE	= 33.1	CFS
100 YEAR HW ELEVATION	= 927.76	FT
OVERTOPPING FREQUENCY	= 500+	YRS
OVERTOPPING DISCHARGE	= 61.0	CFS
OVERTOPPING ELEVATION	= 929.35	FT

BM # 4
-L- STA. 52+89.21
-Y4- STA. 10+00.00

FOR -L- PLAN SEE SHTS. 6-8

LEFT DITCH
RIGHT DITCH

UNDERCUT

RK&K
P: (919) 878-8560
8801 Six Forks Road, Forum 1, Suite 700
Raleigh, North Carolina 27615-3960
NC License No. F-0112
Engineers | Construction Managers | Planners | Scientists
www.rkk.com
Responsive People | Creative Solutions

R:\Projects\2023\Projects\2577A\RD\p132.dgn