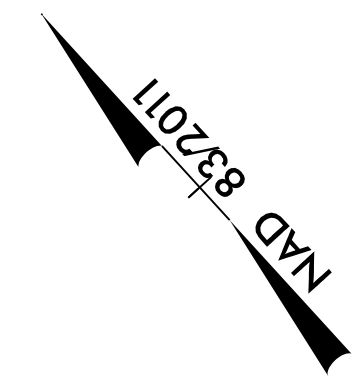
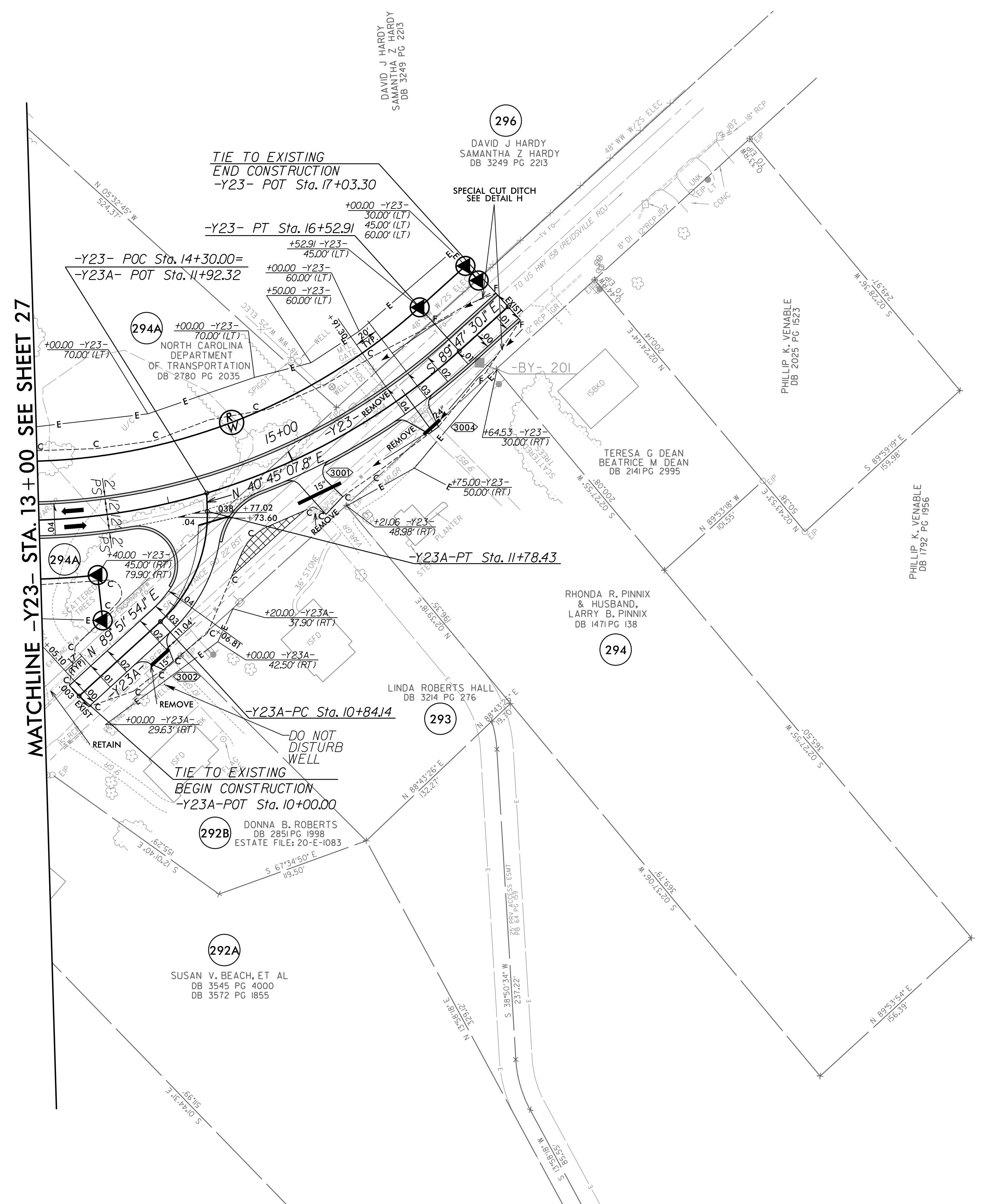


8/17/99
R:\Projects\2023\2577A\2577A.rdw_psh30.dgn
10/1/2023

-Y23-	-Y23A-
PI Sta 14+77.82	PI Sta 11+34.41
$\Delta = 42^{\circ} 08' 08.4" (LT)$	$\Delta = 49^{\circ} 06' 46.3" (LT)$
$D = 1' 27' 33.0"$	$D = 52' 05' 13.5"$
$L = 367.70'$	$L = 94.29'$
$T = 192.6'$	$T = 50.26'$
$R = 500.00'$	$R = 110.00'$
$SE = 0.04$	$SE = 0.04$
$DS = 35 \text{ MPH}$	$DS = 20 \text{ MPH}$



PROJECT REFERENCE NO. R-2577A	SHEET NO. 30
RW SHEET NO.	
ROADWAY DESIGN ENGINEER	HYDRAULICS ENGINEER
DOCUMENT NOT CONSIDERED FINAL UNLESS ALL SIGNATURES COMPLETED	



REMOVAL OF EXISTING PAVEMENT

FOR -Y23- PROFILE SEE SHT. 48
FOR -Y23A- PROFILE SEE SHT. 49

RK&K
 P: (919) 878-9560
 8601 Six Forks Road, Forum 1, Suite 700
 Raleigh, North Carolina 27615-3960
 NC License No. F-0112
 Engineers | Construction Managers | Planners | Scientists
 www.rkk.com
 Responsive People | Creative Solutions