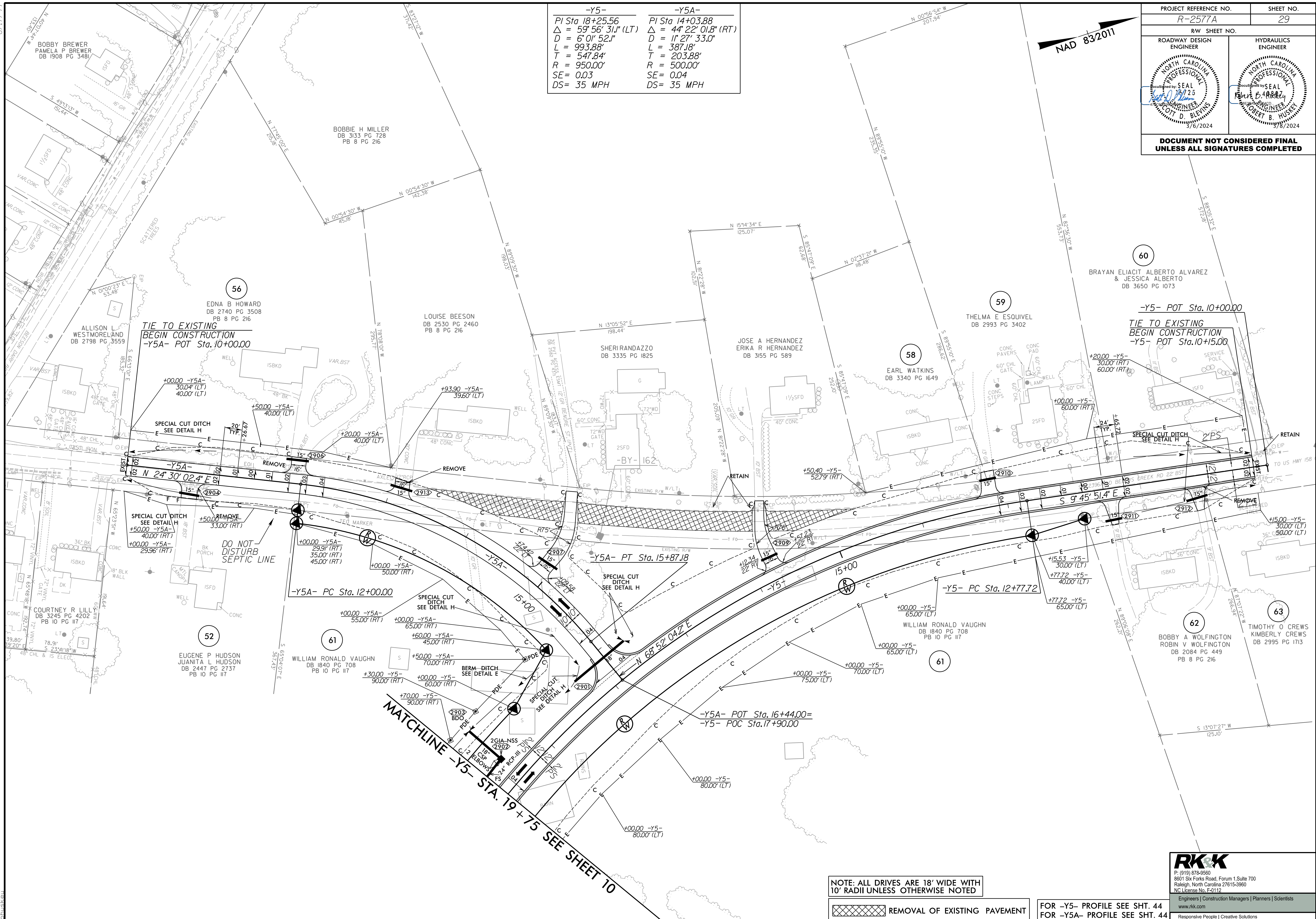


-Y5-	-Y5A-
PI Sta 18+25.56	PI Sta 14+03.88
$\Delta = 59^{\circ}56'31.1''$ (LT)	$\Delta = 44^{\circ}22'01.8''$ (RT)
D = 6'01'52.1"	D = 1'27'33.0"
L = 993.88'	L = 387.18'
T = 547.84'	T = 203.88'
R = 950.00'	R = 500.00'
SE = 0.03	SE = 0.04
DS = 35 MPH	DS = 35 MPH

NAD 83/2011



NOTE: ALL DRIVES ARE 18' WIDE WITH 10' RADII UNLESS OTHERWISE NOTED

REMOVAL OF EXISTING PAVEMENT

FOR -Y5- PROFILE SEE SHT. 44
FOR -Y5A- PROFILE SEE SHT. 44

RKK
 P: (919) 878-9560
 8601 Six Forks Road, Forum 1, Suite 700
 Raleigh, North Carolina 27615-3960
 NC License No. F-0112
 Engineers | Construction Managers | Planners | Scientists
 www.rkk.com
 Responsive People | Creative Solutions

8/17/2024
 R:\Projects\2024\Projects\N\N-2577A_r.dwg_psh29.dgn
 2/29/2024