

8.17.799

PROJECT REFERENCE NO. R-2577A	SHEET NO. 23
ROADWAY DESIGN ENGINEER	HYDRAULICS ENGINEER
<b>DOCUMENT NOT CONSIDERED FINAL UNLESS ALL SIGNATURES COMPLETED</b>	

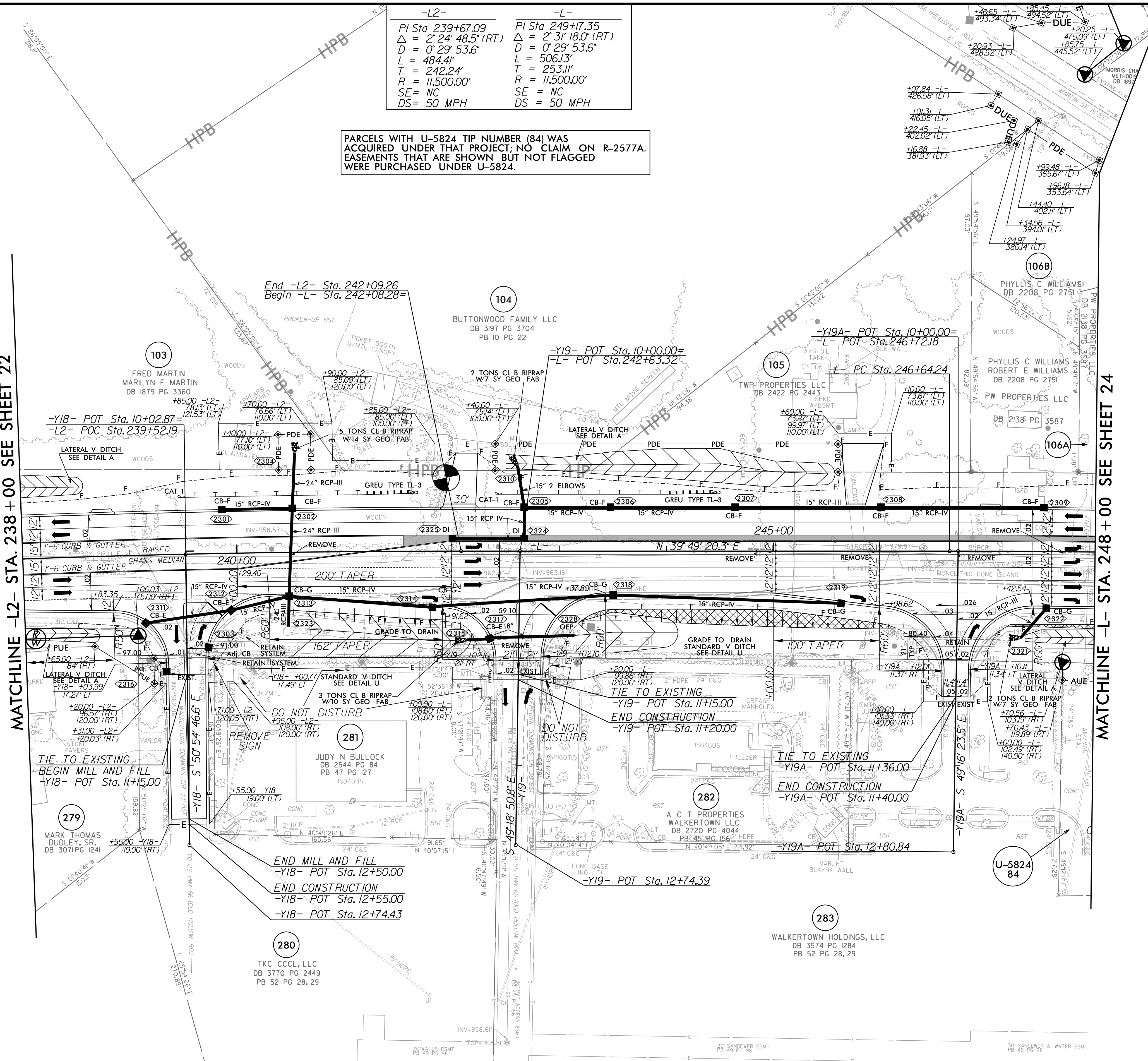


-L2-	-L-
PI Sta 239+67.09	PI Sta 249+17.35
$\Delta = 2' 24" 48.5" (RT)$	$\Delta = 2' 31" 18.0" (RT)$
$D = 0' 29" 53.6"$	$D = 0' 29" 53.6"$
$L = 484.4'$	$L = 506.13'$
$T = 242.24'$	$T = 253.11'$
$R = 11,500.00'$	$R = 11,500.00'$
SE = NC	SE = NC
DS = 50 MPH	DS = 50 MPH

PARCELS WITH U-5824 TIP NUMBER (84) WAS ACQUIRED UNDER THAT PROJECT; NO CLAIM ON R-2577A. EASEMENTS THAT ARE SHOWN BUT NOT FLAGGED WERE PURCHASED UNDER U-5824.

MATCHLINE -L2- STA. 238 + 00 SEE SHEET 22

MATCHLINE -L- STA. 248 + 00 SEE SHEET 24



NOTE: ALL DRIVEWAYS ARE 18' UNLESS OTHERWISE NOTED



FOR -L- PROFILE SEE SHT. 39  
 FOR -L2- PROFILE SEE SHT. 39  
 FOR -Y18- PROFILE SEE SHT. 47  
 FOR -Y19- PROFILE SEE SHT. 47  
 FOR -Y19A- PROFILE SEE SHT. 48

**RKK**  
 P: (919) 878-9560  
 8601 Six Forks Road, Forum 1, Suite 700  
 Raleigh, North Carolina 27615-3960  
 NC License No. F-0112  
 Engineers | Construction Managers | Planners | Scientists  
 www.rkk.com  
 Responsive People | Creative Solutions

I:\2023\Projects\Pro\N\N\2577A\_r.dwg\_psh23.dgn