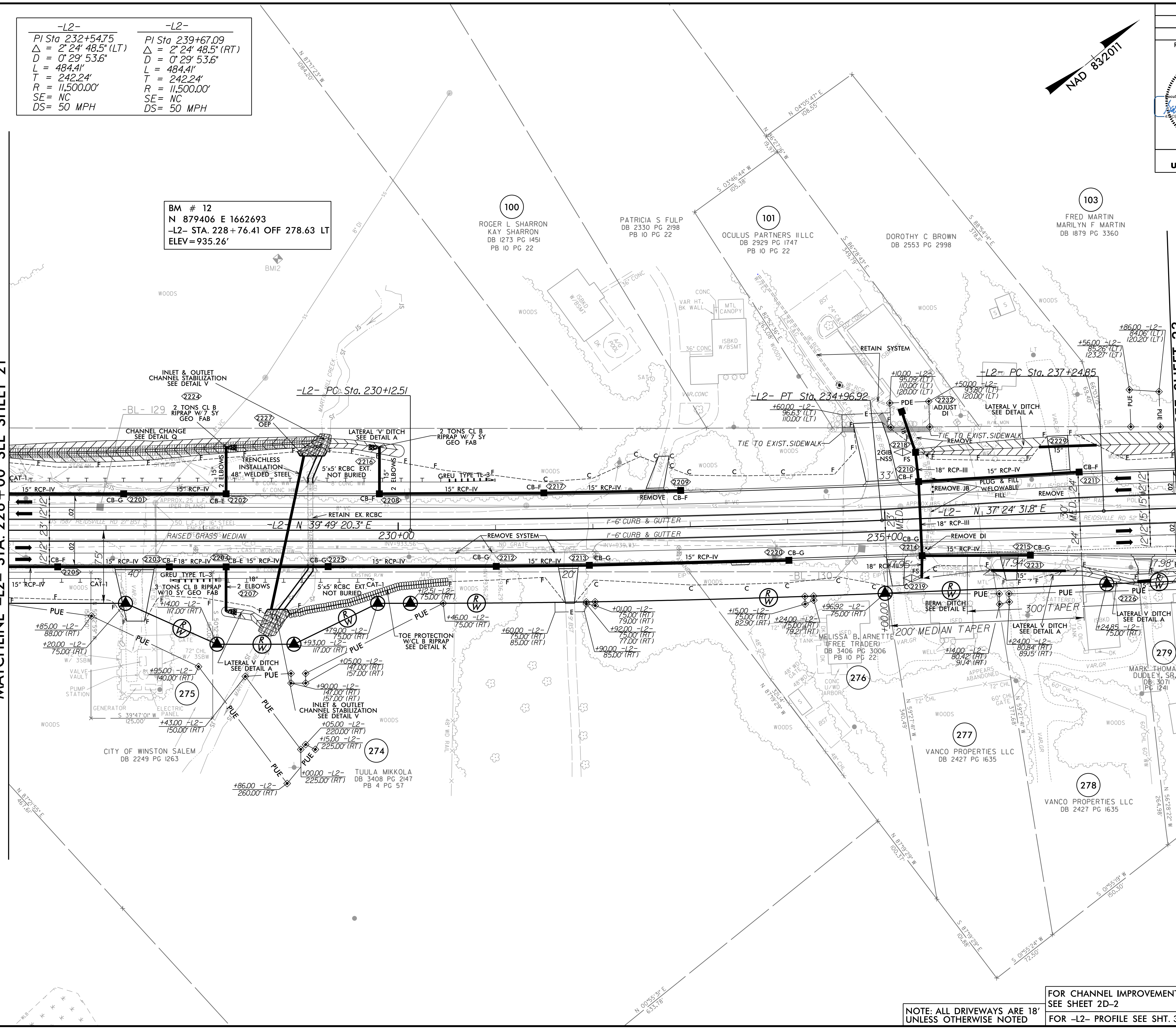


-L2-	-L2-
PI Sta 232+54.75	PI Sta 239+67.09
$\Delta = 2' 24" 48.5" (LT)$	$\Delta = 2' 24" 48.5" (RT)$
$D = 0' 29' 53.6"$	$D = 0' 29' 53.6"$
$L = 484.4'$	$L = 484.4'$
$T = 242.24'$	$T = 242.24'$
$R = 11,500.00'$	$R = 11,500.00'$
SE = NC	SE = NC
DS = 50 MPH	DS = 50 MPH

BM # 12
N 879406 E 1662693
-L2- STA. 228+76.41 OFF 278.63 LT
ELEV = 935.26'

MATCHLINE -L2- STA. 226+00 SEE SHEET 21

MATCHLINE -L2- STA. 238+00 SEE SHEET 23



NOTE: ALL DRIVEWAYS ARE 18' UNLESS OTHERWISE NOTED
FOR CHANNEL IMPROVEMENTS SEE SHEET 2D-2
FOR -L2- PROFILE SEE SHT. 39

RKK
P: (919) 878-9560
8601 Six Forks Road, Forum 1, Suite 700
Raleigh, North Carolina 27615-3960
NC License No. F-0112
www.rkk.com
Engineers | Construction Managers | Planners | Scientists
Responsive People | Creative Solutions

R:\Roadway\Projs\R-2577A_r.dwg_psh22.dgn 2/27/2024