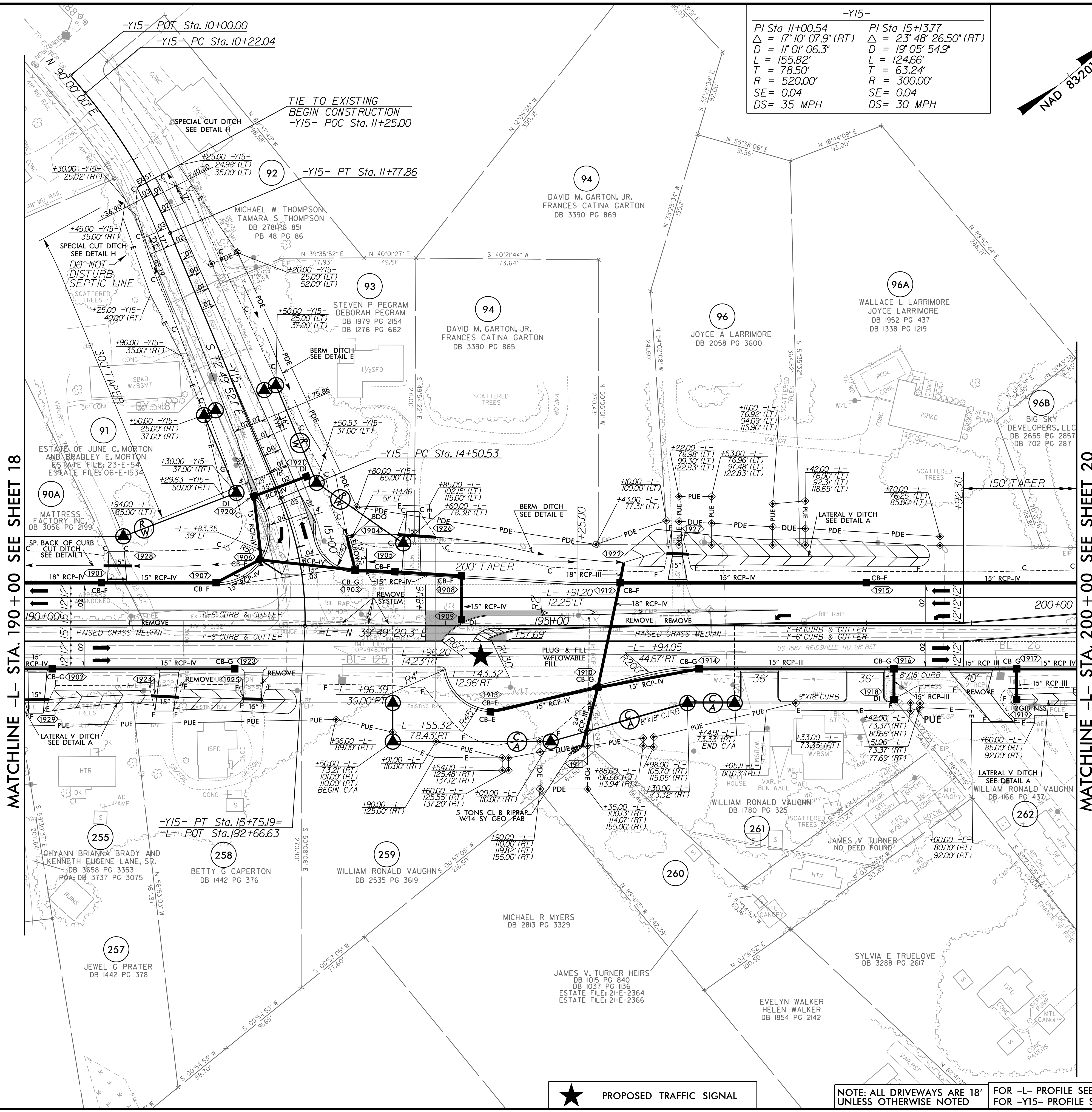


8.17.19
R:\Roadway\Pro\N-2577A_r.dwg_psh19.dgn



-Y15-	
PI Sta 11+00.54	PI Sta 15+13.77
$\Delta = 17' 10'' 07.9''$ (RT)	$\Delta = 23' 48'' 26.50''$ (RT)
$D = 11' 01'' 06.3''$	$D = 19' 05'' 54.9''$
$L = 155.82'$	$L = 124.66'$
$T = 78.50'$	$T = 63.24'$
$R = 520.00'$	$R = 300.00'$
$SE = 0.04$	$SE = 0.04$
$DS = 35$ MPH	$DS = 30$ MPH



PROJECT REFERENCE NO.	SHEET NO.
R-2577A	19
RW SHEET NO.	
ROADWAY DESIGN ENGINEER	HYDRAULICS ENGINEER
DOCUMENT NOT CONSIDERED FINAL UNLESS ALL SIGNATURES COMPLETED	

MATCHLINE -L- STA. 190+00 SEE SHEET 18

MATCHLINE -L- STA. 200+00 SEE SHEET 20

★ PROPOSED TRAFFIC SIGNAL

NOTE: ALL DRIVEWAYS ARE 18' UNLESS OTHERWISE NOTED FOR -L- PROFILE SEE SHTS. 37-38 FOR -Y15- PROFILE SEE SHT. 47

P: (919) 878-9560
8601 Six Forks Road, Forum 1, Suite 700
Raleigh, North Carolina 27615-3960
NC License No. F-0112
Engineers | Construction Managers | Planners | Scientists
www.rkk.com
Responsive People | Creative Solutions