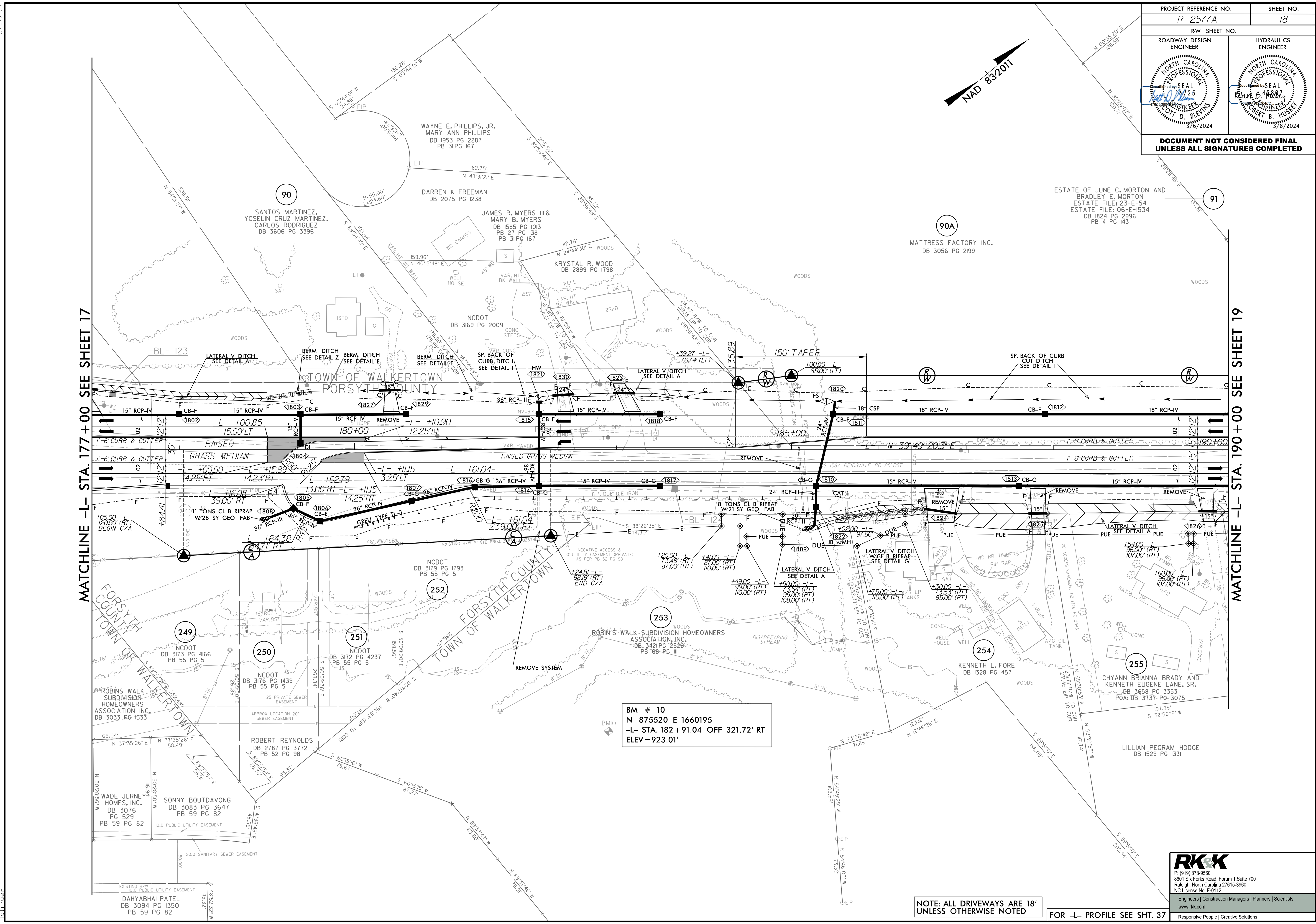


| | | | |
|--|--|---------------------|--|
| PROJECT REFERENCE NO. R-2577A | | SHEET NO. 18 | |
| RW SHEET NO. ROADWAY DESIGN ENGINEER | | HYDRAULICS ENGINEER | |
| | | | |
| DOCUMENT NOT CONSIDERED FINAL UNLESS ALL SIGNATURES COMPLETED | | | |



MATCHLINE -L- STA. 177 + 00 SEE SHEET 17

MATCHLINE -L- STA. 190 + 00 SEE SHEET 19

BM # 10
N 875520 E 1660195
-L- STA. 182 + 91.04 OFF 321.72' RT
ELEV = 923.01'

NOTE: ALL DRIVEWAYS ARE 18'
UNLESS OTHERWISE NOTED

FOR -L- PROFILE SEE SHT. 37

RKK
P: (919) 878-9560
8601 Six Forks Road, Forum 1, Suite 700
Raleigh, North Carolina 27615-3960
NC License No. F-0112
Engineers | Construction Managers | Planners | Scientists
www.rkk.com
Responsive People | Creative Solutions

8/17/2023 R:\Projects\2023\Proj\R-2577A_r.dwg_psh18.dgn