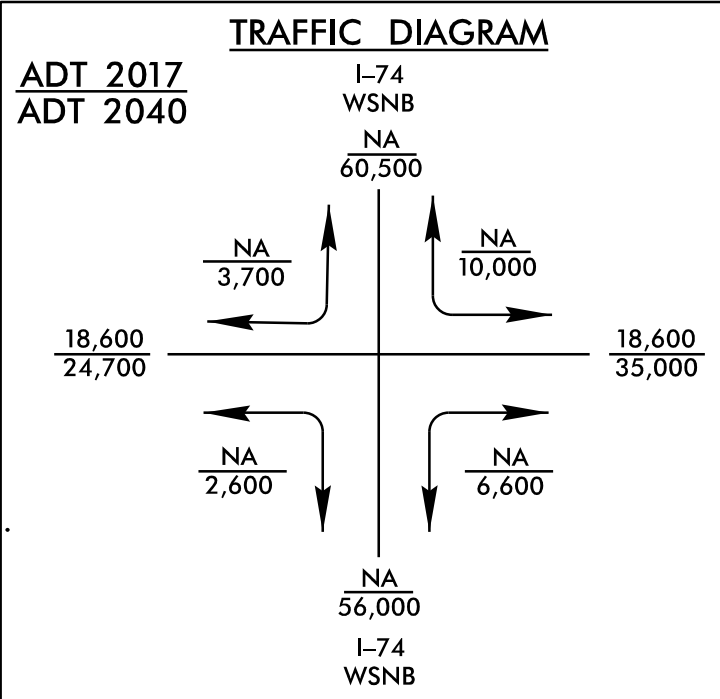


8/17/99
R:\Road\Proj\N-2577A_r.dwg_psh16.dgn
10/1/2023

PROJECT REFERENCE NO. R-2577A	SHEET NO. 16
RW SHEET NO.	
ROADWAY DESIGN ENGINEER	HYDRAULICS ENGINEER
DOCUMENT NOT CONSIDERED FINAL UNLESS ALL SIGNATURES COMPLETED	



**NO DRAINAGE ON THIS PLANSHEET
THIS IS THE U-2579B PROJECT**

BM # 9
N 873960 E 1658408
-L- STA. 159 + 49.40 OFF 51.58' LT
ELEV = 909.53'

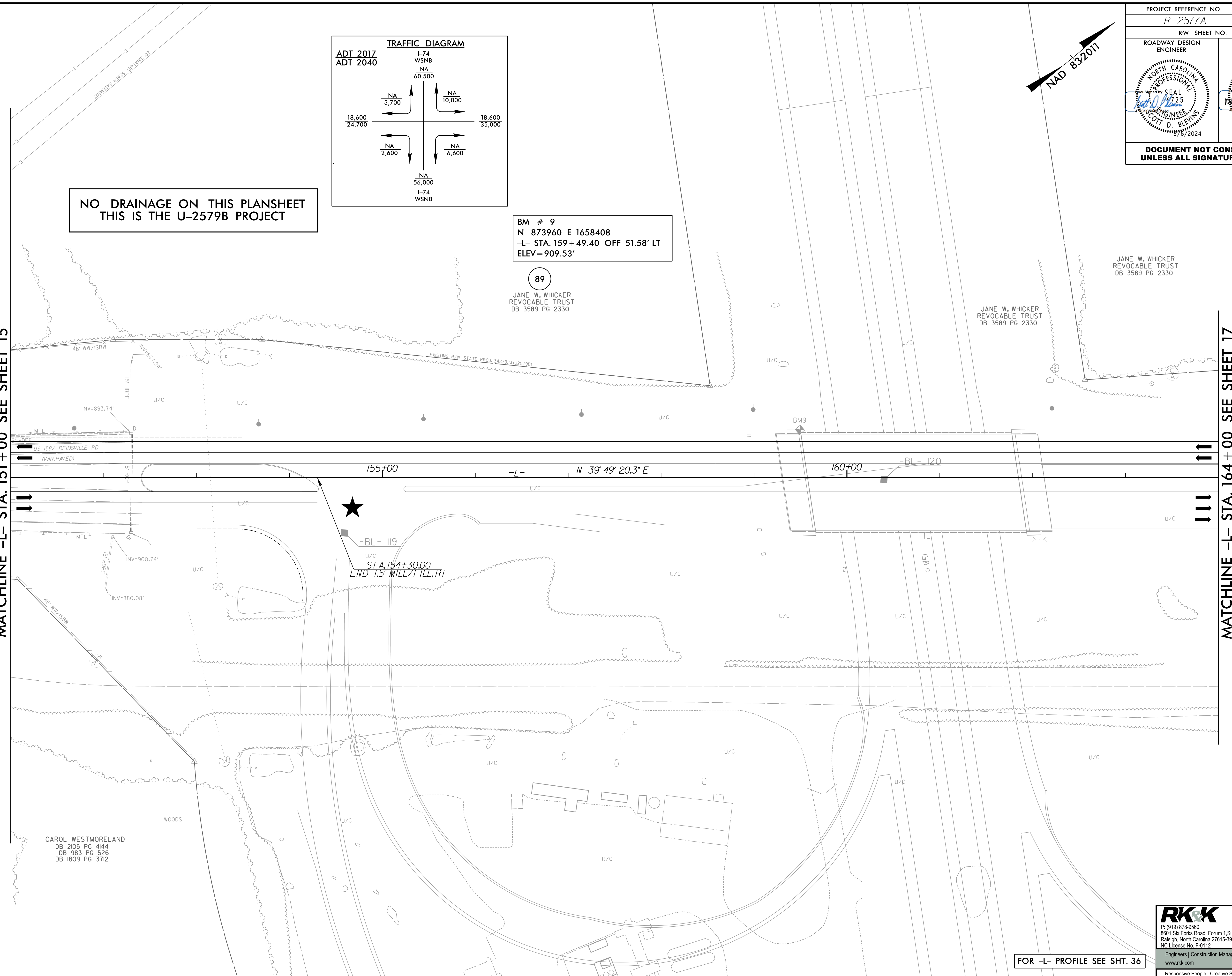
89
JANE W. WHICKER
REVOCABLE TRUST
DB 3589 PG 2330

JANE W. WHICKER
REVOCABLE TRUST
DB 3589 PG 2330

JANE W. WHICKER
REVOCABLE TRUST
DB 3589 PG 2330

MATCHLINE -L- STA. 151 + 00 SEE SHEET 15

MATCHLINE -L- STA. 164 + 00 SEE SHEET 17



CAROL WESTMORELAND
DB 2105 PG 4144
DB 983 PG 526
DB 1809 PG 3712

RKK
P: (919) 878-9560
8601 Six Forks Road, Forum 1, Suite 700
Raleigh, North Carolina 27615-3960
NC License No. F-0112
Engineers | Construction Managers | Planners | Scientists
www.rkk.com
Responsive People | Creative Solutions

FOR -L- PROFILE SEE SHT. 36