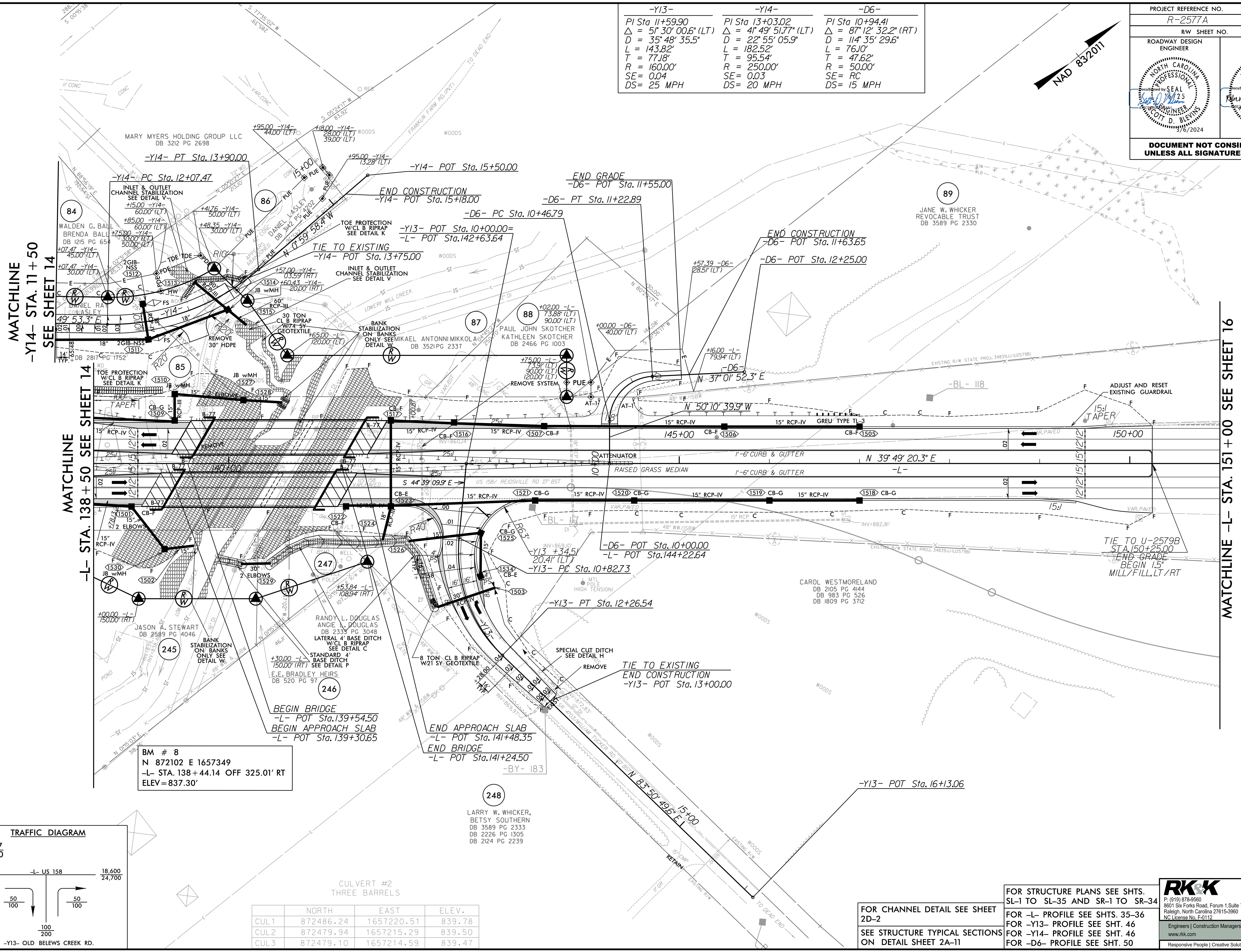


PROJECT REFERENCE NO. R-2577A	SHEET NO. 15
RW SHEET NO.	HYDRAULICS ENGINEER
ROADWAY DESIGN ENGINEER	HYDRAULICS ENGINEER
<b>DOCUMENT NOT CONSIDERED FINAL UNLESS ALL SIGNATURES COMPLETED</b>	

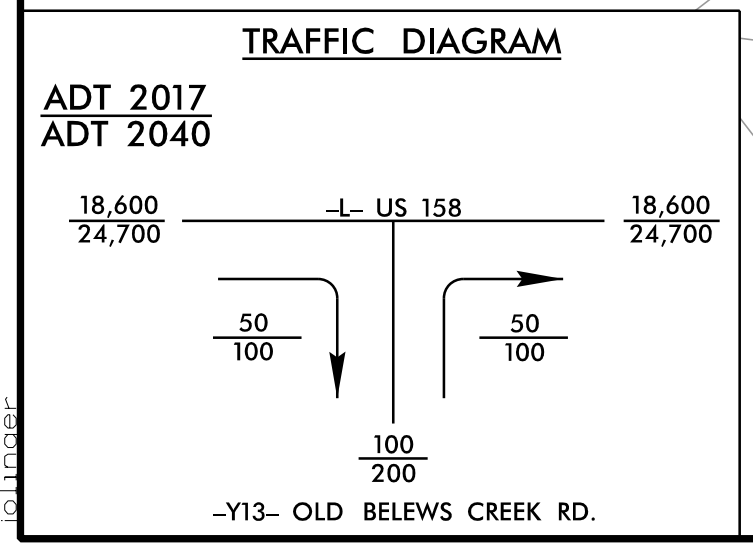
-Y13-	-Y14-	-D6-
PI Sta 11+59.90	PI Sta 13+03.02	PI Sta 10+94.41
$\Delta = 51^{\circ} 30' 00.6" (LT)$	$\Delta = 41^{\circ} 49' 51.77" (LT)$	$\Delta = 87^{\circ} 12' 32.2" (RT)$
D = 35' 48' 35.5"	D = 22' 55' 05.9"	D = 114' 35' 29.6"
L = 143.82'	L = 182.52'	L = 76.10'
T = 77.18'	T = 95.54'	T = 47.62'
R = 160.00'	R = 250.00'	R = 50.00'
SE = 0.04	SE = 0.03	SE = RC
DS = 25 MPH	DS = 20 MPH	DS = 15 MPH



MATCHLINE  
-Y14- STA. 11+50  
SEE SHEET 14

MATCHLINE  
-L- STA. 138+50  
SEE SHEET 14

MATCHLINE -L- STA. 151+00  
SEE SHEET 16



	NORTH	EAST	ELEV.
CUL1	872486.24	1657220.51	839.78
CUL2	872479.94	1657215.29	839.50
CUL3	872479.10	1657214.59	839.47

FOR CHANNEL DETAIL SEE SHEET 2D-2  
SEE STRUCTURE TYPICAL SECTIONS ON DETAIL SHEET 2A-11

FOR STRUCTURE PLANS SEE SHTS. SL-1 TO SL-35 AND SR-1 TO SR-34  
FOR -L- PROFILE SEE SHTS. 35-36  
FOR -Y13- PROFILE SEE SHT. 46  
FOR -Y14- PROFILE SEE SHT. 46  
FOR -D6- PROFILE SEE SHT. 50

**RKK**

P: (919) 878-9560  
8601 Six Forks Road, Forum 1, Suite 700  
Raleigh, North Carolina 27615-3960  
NC License No. F-0112

Engineers | Construction Managers | Planners | Scientists  
www.rkk.com  
Responsive People | Creative Solutions

8/17/2023 R:\Roadway\Pro\R-2577A\_r.dwg\_psh15.dgn