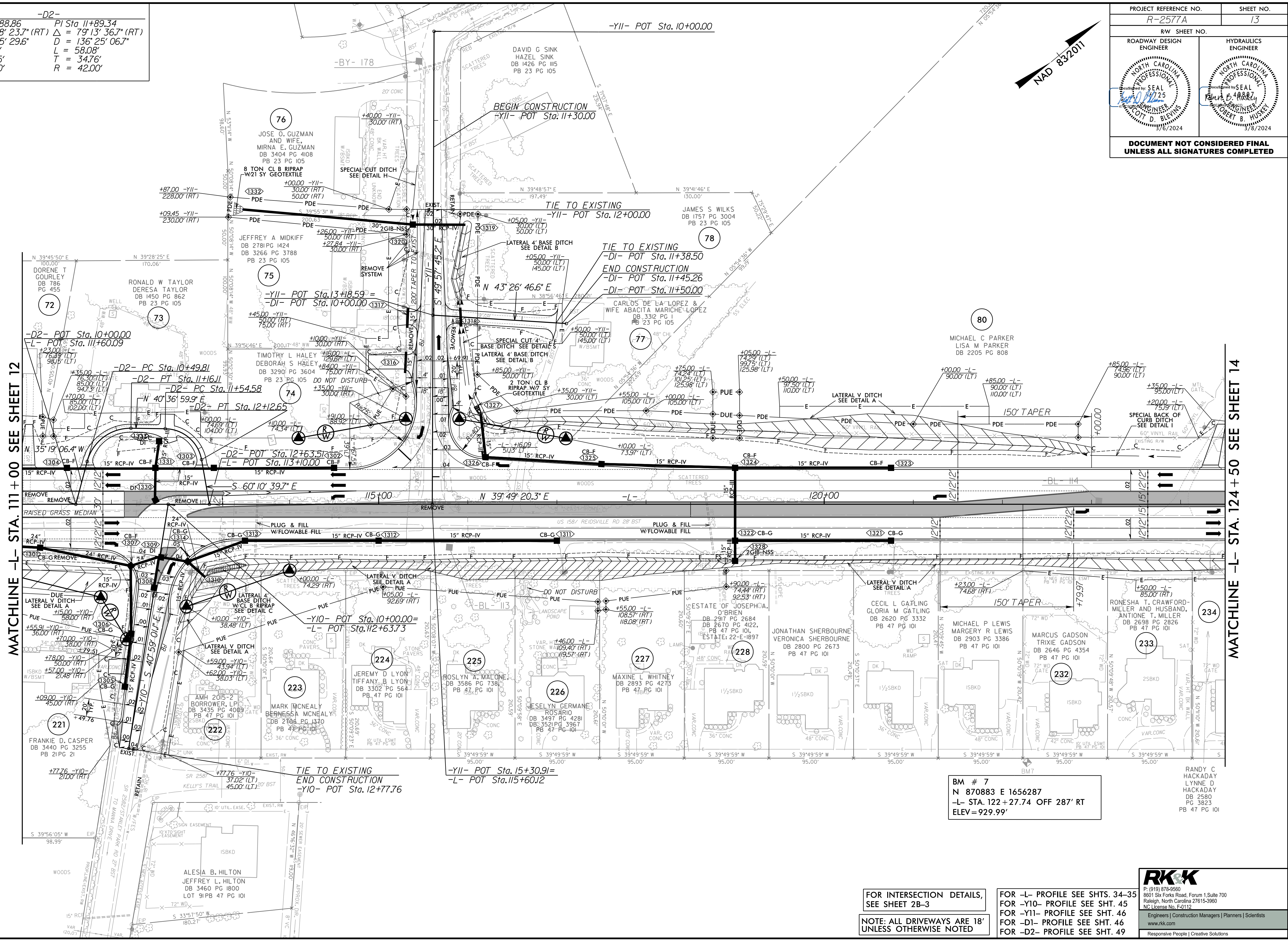


-D2-  
 PI Sta 10+88.86 Δ = 75° 58' 23.7" (RT) D = 136' 25' 06.7" L = 66.30' T = 39.05' R = 50.00'  
 PI Sta 11+89.34 Δ = 79° 13' 36.7" (RT) D = 136' 25' 06.7" L = 58.08' T = 34.76' R = 42.00'

PROJECT REFERENCE NO. R-2577A	SHEET NO. 13
ROADWAY DESIGN ENGINEER	HYDRAULICS ENGINEER
DOCUMENT NOT CONSIDERED FINAL UNLESS ALL SIGNATURES COMPLETED	



MATCHLINE -L- STA. 111+00 SEE SHEET 12

MATCHLINE -L- STA. 124+50 SEE SHEET 14

BM # 7  
 N 870883 E 1656287  
 -L- STA. 122+27.74 OFF 287' RT  
 ELEV = 929.99'

FOR INTERSECTION DETAILS,  
 SEE SHEET 2B-3  
 NOTE: ALL DRIVEWAYS ARE 18'  
 UNLESS OTHERWISE NOTED

FOR -L- PROFILE SEE SHTS. 34-35  
 FOR -Y10- PROFILE SEE SHT. 45  
 FOR -Y11- PROFILE SEE SHT. 46  
 FOR -D1- PROFILE SEE SHT. 46  
 FOR -D2- PROFILE SEE SHT. 49

R:\Projects\2024\N\Pro\N-R-2577A\_r.dwg\_psh13.dgn  
 8/17/2024