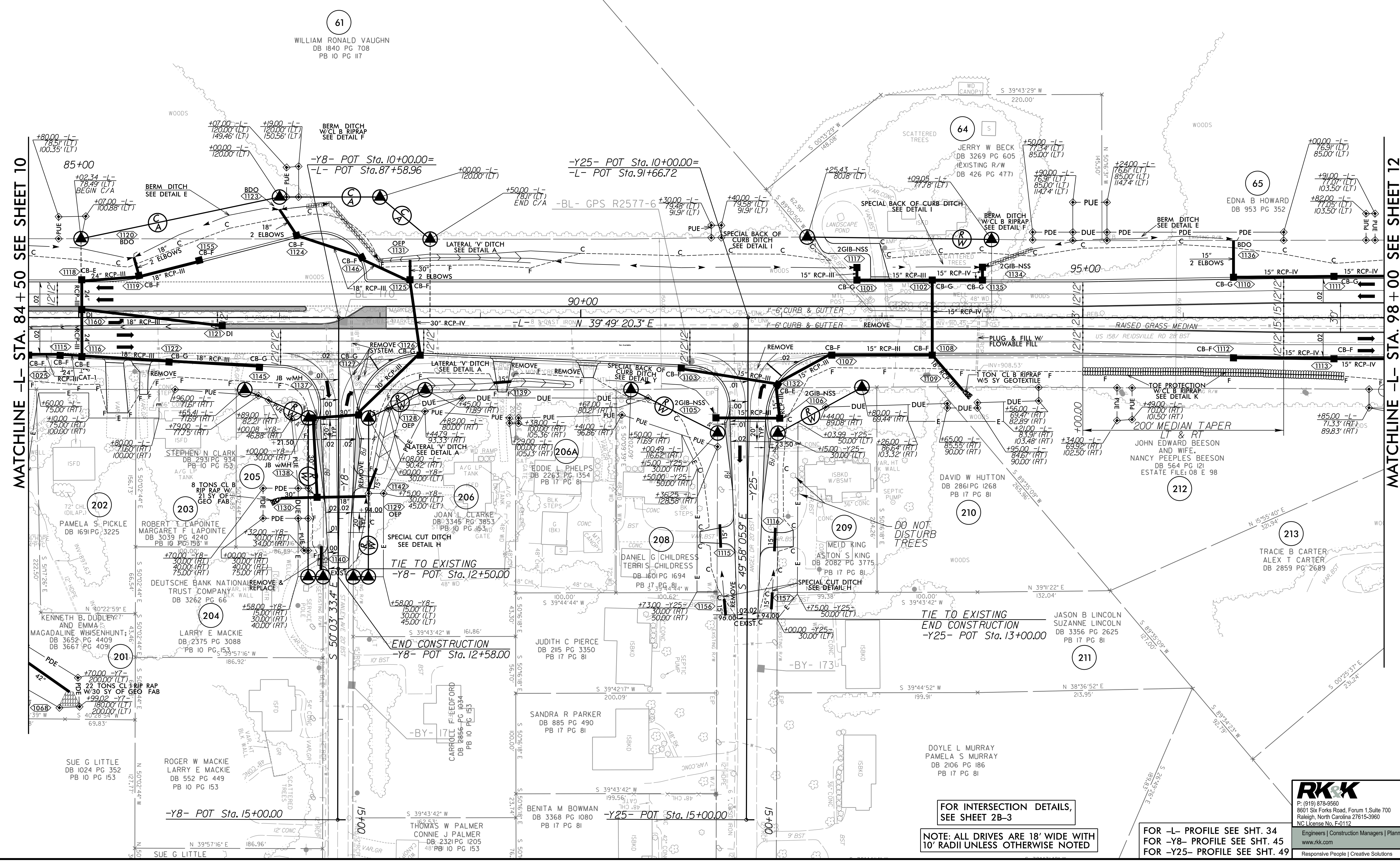


PROJECT REFERENCE NO. R-2577A	SHEET NO. 11
RW SHEET NO.	
ROADWAY DESIGN ENGINEER	HYDRAULICS ENGINEER
DOCUMENT NOT CONSIDERED FINAL UNLESS ALL SIGNATURES COMPLETED	



MATCHLINE -L- STA. 84 + 50 SEE SHEET 10

MATCHLINE -L- STA. 98 + 00 SEE SHEET 12

61
WILLIAM RONALD VAUGHN
DB 1840 PG 708
PB 10 PG 117

FOR INTERSECTION DETAILS,
SEE SHEET 2B-3

NOTE: ALL DRIVES ARE 18' WIDE WITH
10' RADII UNLESS OTHERWISE NOTED

FOR -L- PROFILE SEE SHT. 34
FOR -Y8- PROFILE SEE SHT. 45
FOR -Y25- PROFILE SEE SHT. 49

RKK
 P: (919) 878-9560
 8601 Six Forks Road, Forum 1, Suite 700
 Raleigh, North Carolina 27615-3960
 NC License No. F-0112
 Engineers | Construction Managers | Planners | Scientists
 www.rkk.com
 Responsive People | Creative Solutions

8/17/2023 R:\Roadway\Proj\R-2577A_r.dwg_psh11.dgn