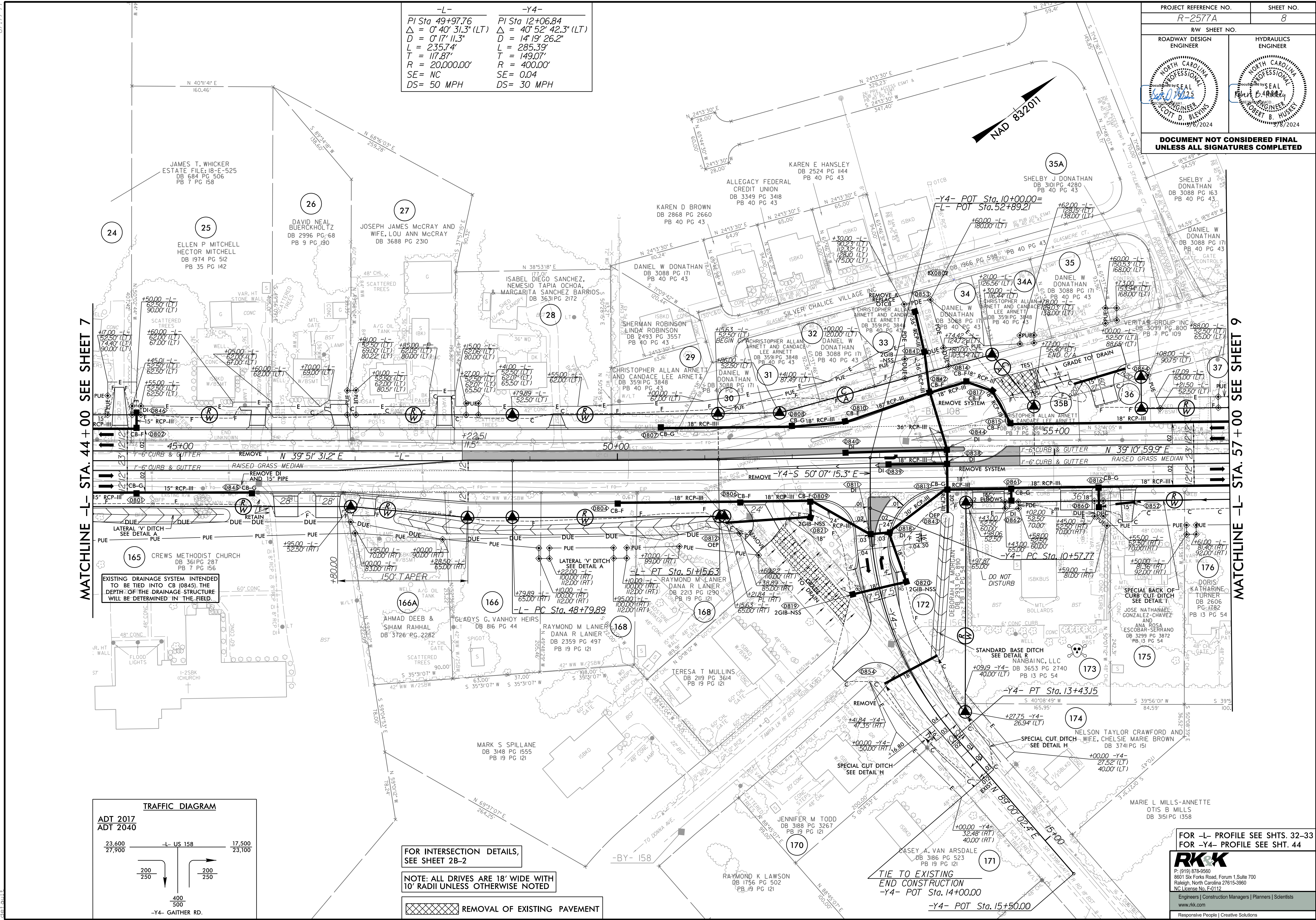


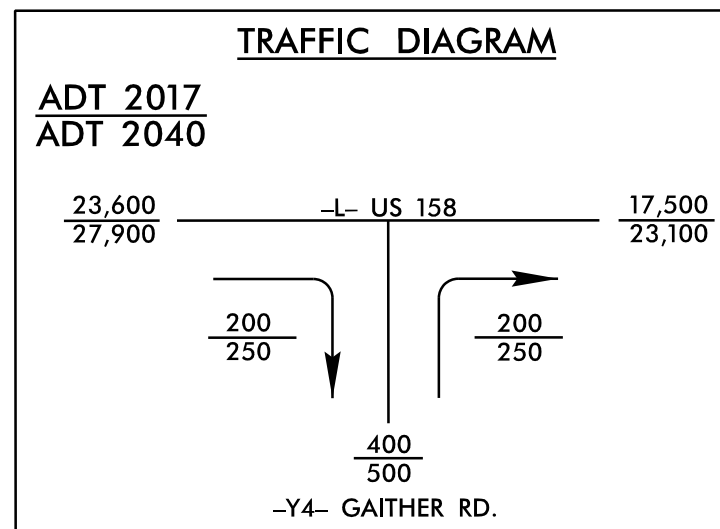
-L-	-Y4-
PI Sta 49+97.76	PI Sta 12+06.84
$\Delta = 0^\circ 40' 31.3" (LT)$	$\Delta = 40^\circ 52' 42.3" (LT)$
$D = 0' 17' 11.3"$	$D = 14' 19' 26.2"$
$L = 235.74'$	$L = 285.39'$
$T = 117.87'$	$T = 149.07'$
$R = 20,000.00'$	$R = 400.00'$
SE= NC	SE= 0.04
DS= 50 MPH	DS= 30 MPH



MATCHLINE -L- STA. 44 + 00 SEE SHEET 7

MATCHLINE -L- STA. 57 + 00 SEE SHEET 9

EXISTING DRAINAGE SYSTEM INTENDED TO BE TIED INTO CB (0845). THE DEPTH OF THE DRAINAGE STRUCTURE WILL BE DETERMINED IN THE FIELD.



FOR INTERSECTION DETAILS, SEE SHEET 2B-2

NOTE: ALL DRIVES ARE 18' WIDE WITH 10' RADII UNLESS OTHERWISE NOTED

REMOVAL OF EXISTING PAVEMENT

FOR -L- PROFILE SEE SHTS. 32-33
FOR -Y4- PROFILE SEE SHT. 44

RKK

P: (919) 878-9560
8801 Six Forks Road, Forum 1, Suite 700
Raleigh, North Carolina 27615-3960
NC License No. F-0112

Engineers | Construction Managers | Planners | Scientists
www.rkk.com
Responsive People | Creative Solutions

R:\Roadway\Proj\R-2577A_r.dwg_psh08.dgn 2/27/2024 8:17:59