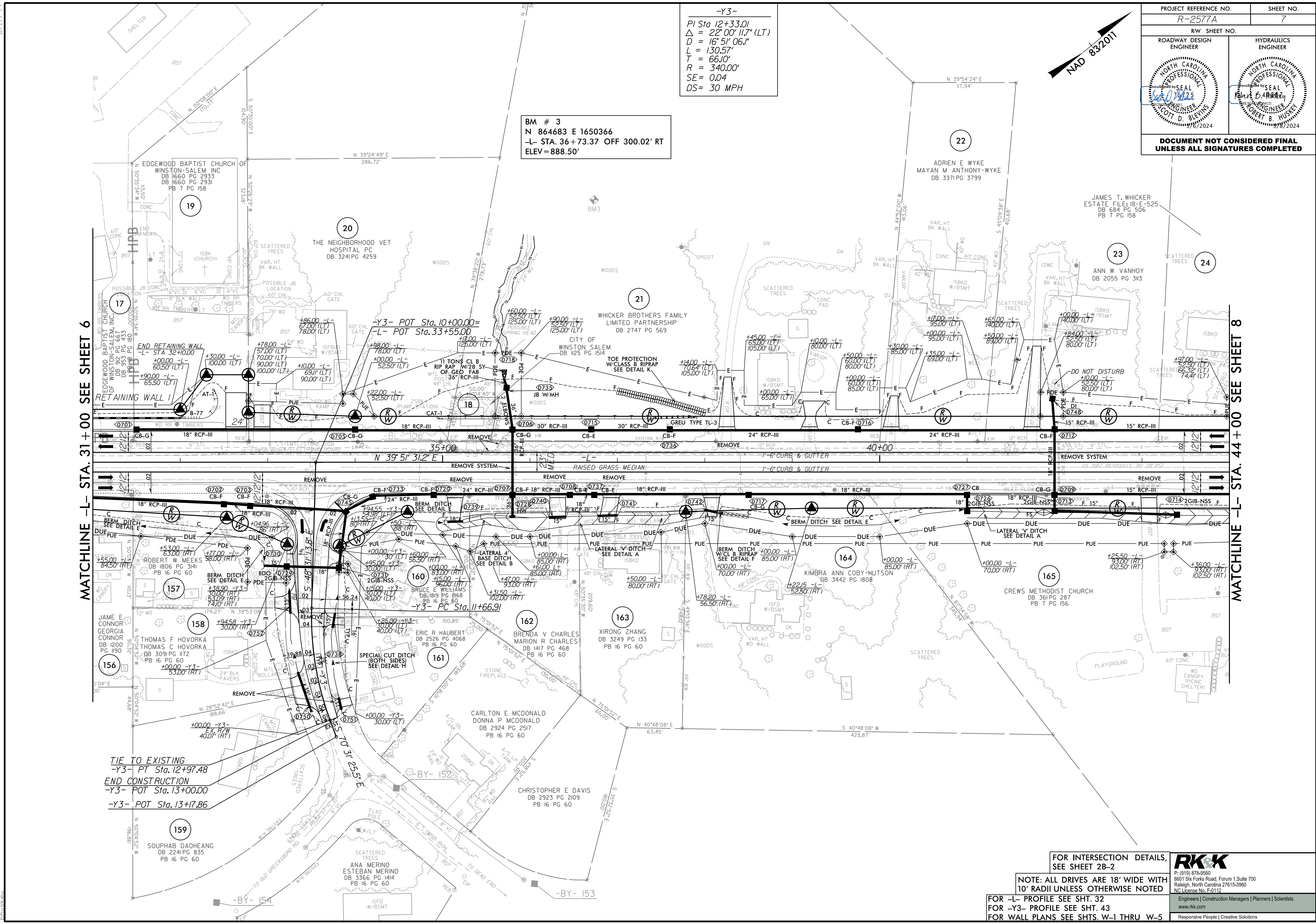


PROJECT REFERENCE NO. R-2577A	SHEET NO. 7
ROADWAY DESIGN ENGINEER	HYDRAULICS ENGINEER
DOCUMENT NOT CONSIDERED FINAL UNLESS ALL SIGNATURES COMPLETED	

-Y3-
 PI Sta 12+33.01
 $\Delta = 22^{\circ}00'11.7" (LT)$
 $D = 16^{\circ}51'06.1"$
 $L = 130.57'$
 $T = 66.10'$
 $R = 340.00'$
 $SE = 0.04$
 $DS = 30 MPH$

BM # 3
 N 864683 E 1650366
 -L- STA. 36+73.37 OFF 300.02' RT
 ELEV = 888.50'



MATCHLINE -L- STA. 31+00 SEE SHEET 6

MATCHLINE -L- STA. 44+00 SEE SHEET 8

TIE TO EXISTING
 -Y3- PT Sta. 12+97.48
 END CONSTRUCTION
 -Y3- POT Sta. 13+00.00
 -Y3- POT Sta. 13+17.86

FOR INTERSECTION DETAILS,
 SEE SHEET 2B-2

NOTE: ALL DRIVES ARE 18' WIDE WITH
 10' RADII UNLESS OTHERWISE NOTED
 FOR -L- PROFILE SEE SHT. 32
 FOR -Y3- PROFILE SEE SHT. 43
 FOR WALL PLANS SEE SHTS. W-1 THRU W-5

RKK
 P: (919) 878-9560
 8601 Six Forks Road, Forum 1, Suite 700
 Raleigh, North Carolina 27615-3960
 NC License No. F-0112
 Engineers | Construction Managers | Planners | Scientists
 www.rkk.com
 Responsive People | Creative Solutions

8/17/19
 R:\Projects\2024\2577A\Pro\N-2577A_r.dwg_psh07.dgn
 2/26/2024