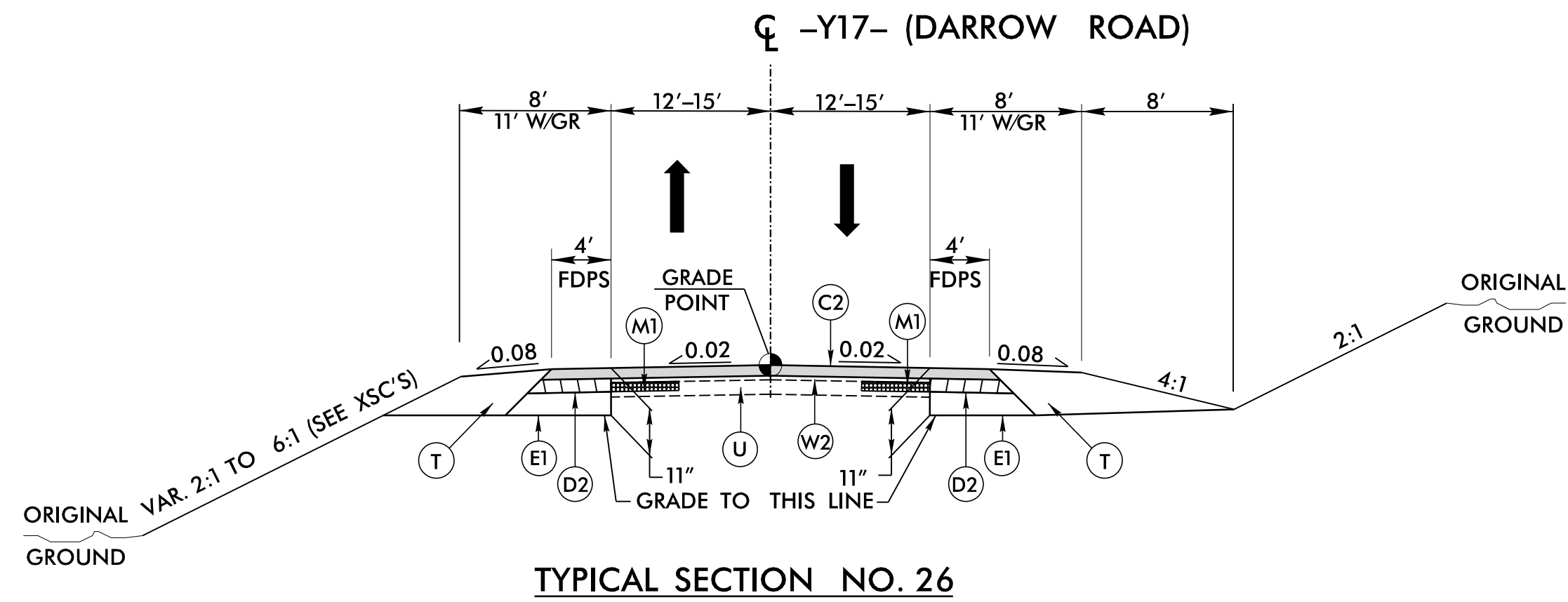
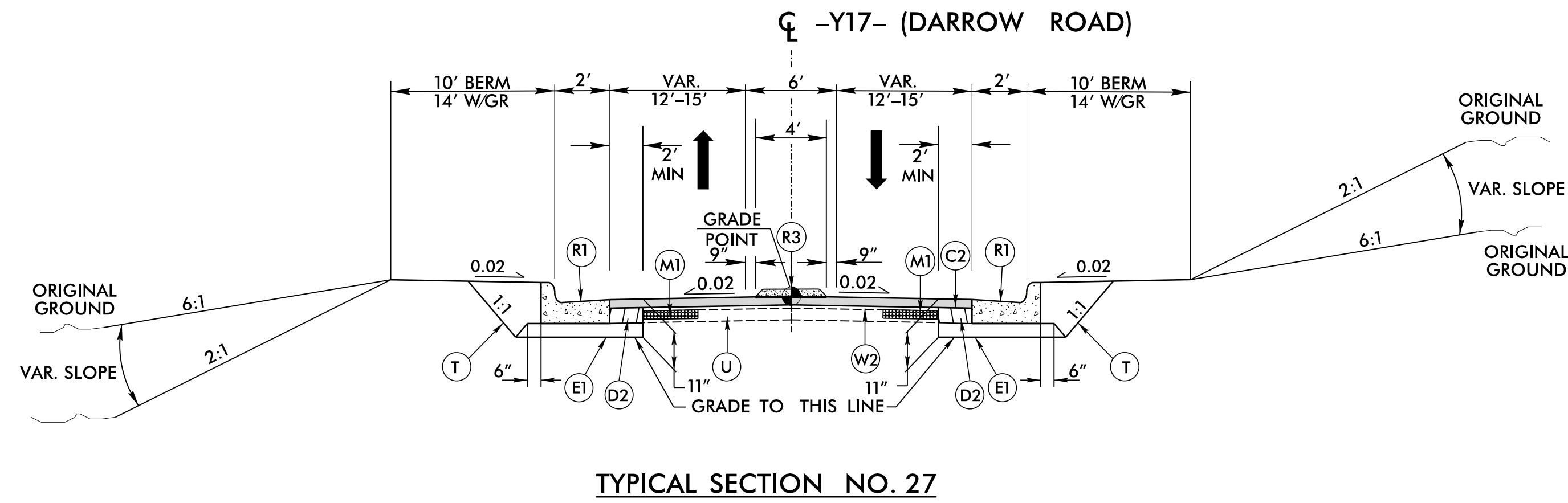


PAVEMENT SCHEDULE FINAL PAVEMENT DESIGN	
C1	2½" TYPE S9.5B
C2	3" TYPE S9.5B
C3	VAR. TYPE S9.5B
C4	1½" TYPE S9.5C
C5	3" TYPE S9.5C
C6	VAR. TYPE S9.5C
D1	2½" TYPE I19.0C
D2	4" TYPE I19.0C
D3	VAR. TYPE I19.0C
E1	4" TYPE B25.0C
E2	5½" TYPE B25.0C
E3	6½" TYPE B25.0C
E4	VAR. TYPE B25.0C
M1	4" BENCH MILLING
M2	2½" BENCH MILLING
R1	2'-6" C & G
R2	1'-6" C & G
R3	5" CONC. ISLAND
R4	8"x18" CURB
S	4" SIDEWALK
T	EARTH MATERIAL
U	EXIST. PAVEMENT
V	1.5" MILLING
W	WEDGING

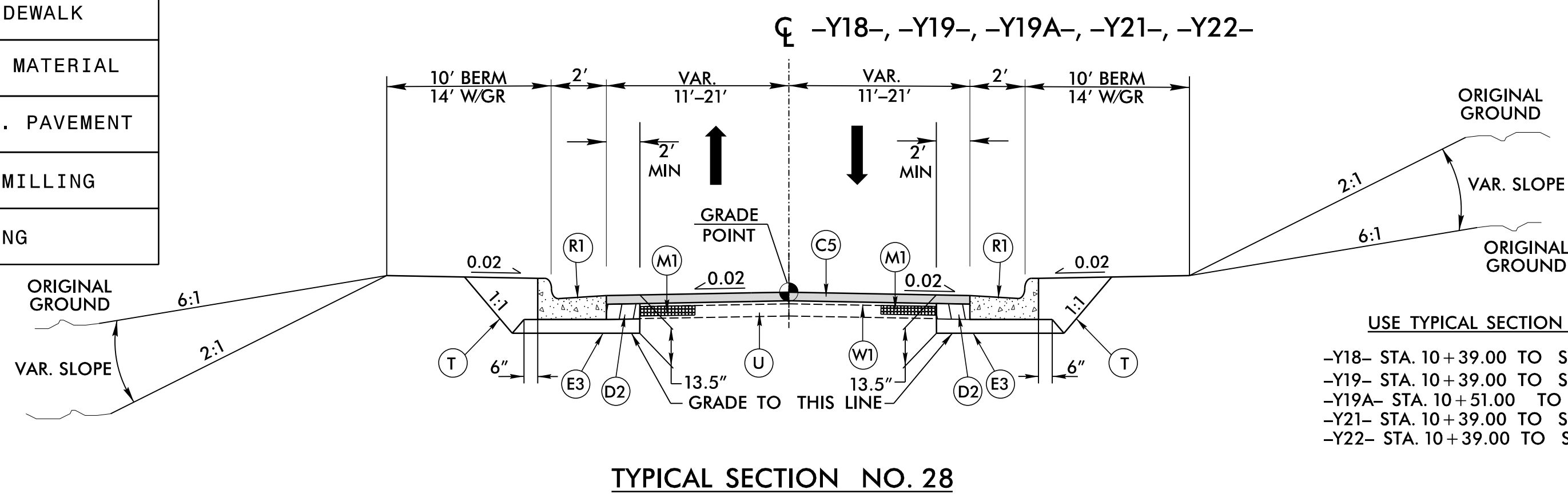
PROJECT REFERENCE NO. R-2577A	SHEET NO. 2A-9
ROADWAY DESIGN ENGINEER 	PAVEMENT DESIGN ENGINEER
DOCUMENT NOT CONSIDERED FINAL UNLESS ALL SIGNATURES COMPLETED	



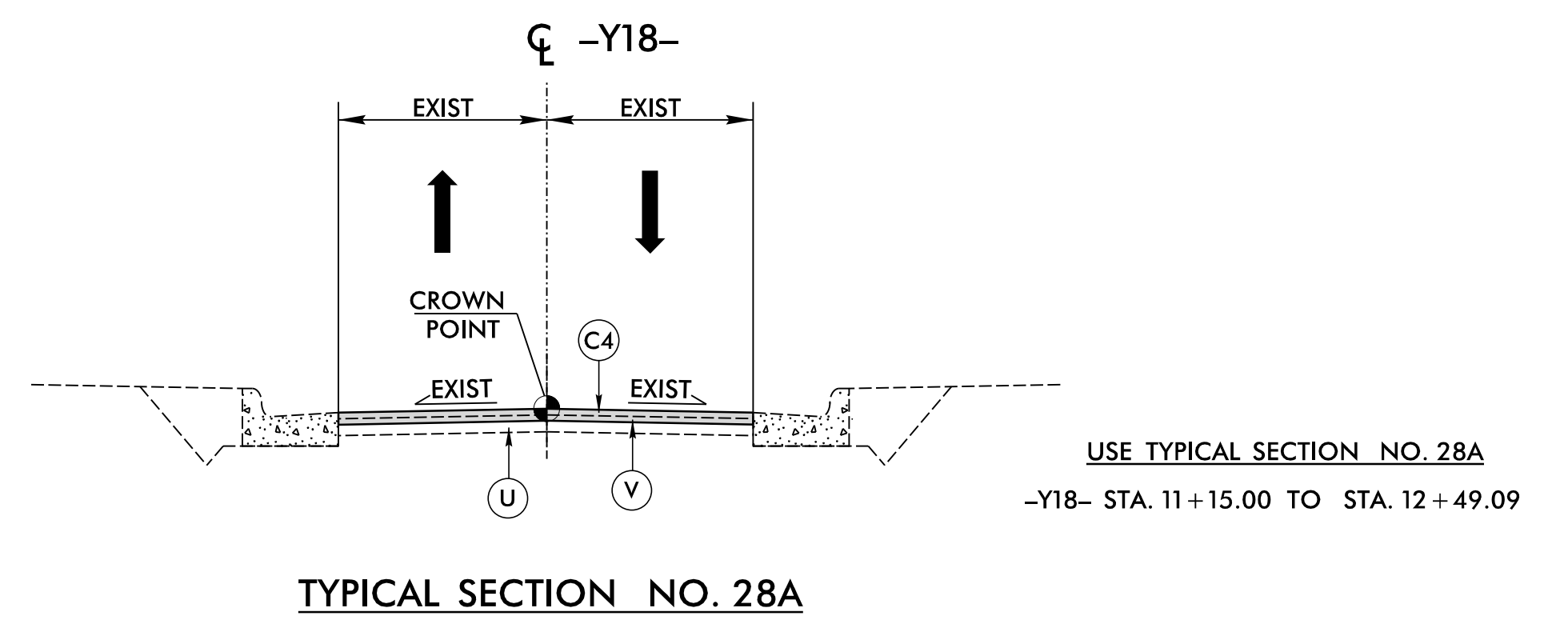
USE TYPICAL SECTION NO. 26
-Y17- STA. 13+67.85 TO STA. 14+50.00



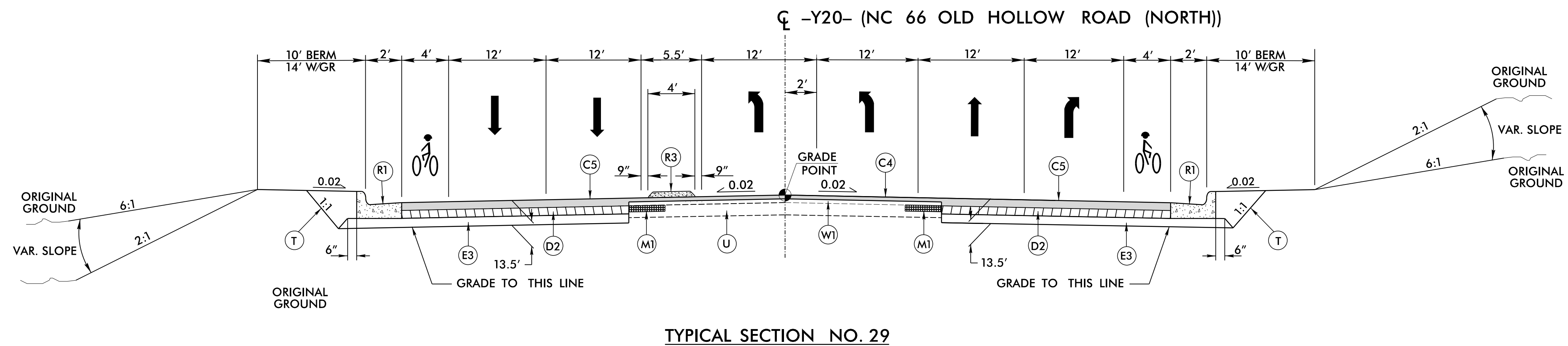
USE TYPICAL SECTION NO. 27
-Y17- STA. 12+23.63 TO STA. 13+67.85



USE TYPICAL SECTION NO. 28
-Y18- STA. 10+39.00 TO STA. 11+15.00
-Y19- STA. 10+39.00 TO STA. 11+15.00
-Y19A- STA. 10+51.00 TO STA. 11+36.00
-Y21- STA. 10+39.00 TO STA. 11+35.00
-Y22- STA. 10+39.00 TO STA. 11+20.00



USE TYPICAL SECTION NO. 28A
-Y18- STA. 11+15.00 TO STA. 12+49.09



USE TYPICAL SECTION NO. 29
-Y20- STA. 96+40.00 TO STA. 98+28.11

NOTE: PAVEMENT EDGE SLOPES ARE 1:1 UNLESS SHOWN OTHERWISE.
SEE PLANS FOR LOCATION OF CONCRETE ISLANDS.

RK&K
P: (919) 878-9560
6601 Six Forks Road, Forum 1, Suite 700
Raleigh, North Carolina 27615-3960
NC License No. F-0112
Engineers | Construction Managers | Planners | Scientists
www.rkk.com
Responsive People | Creative Solutions