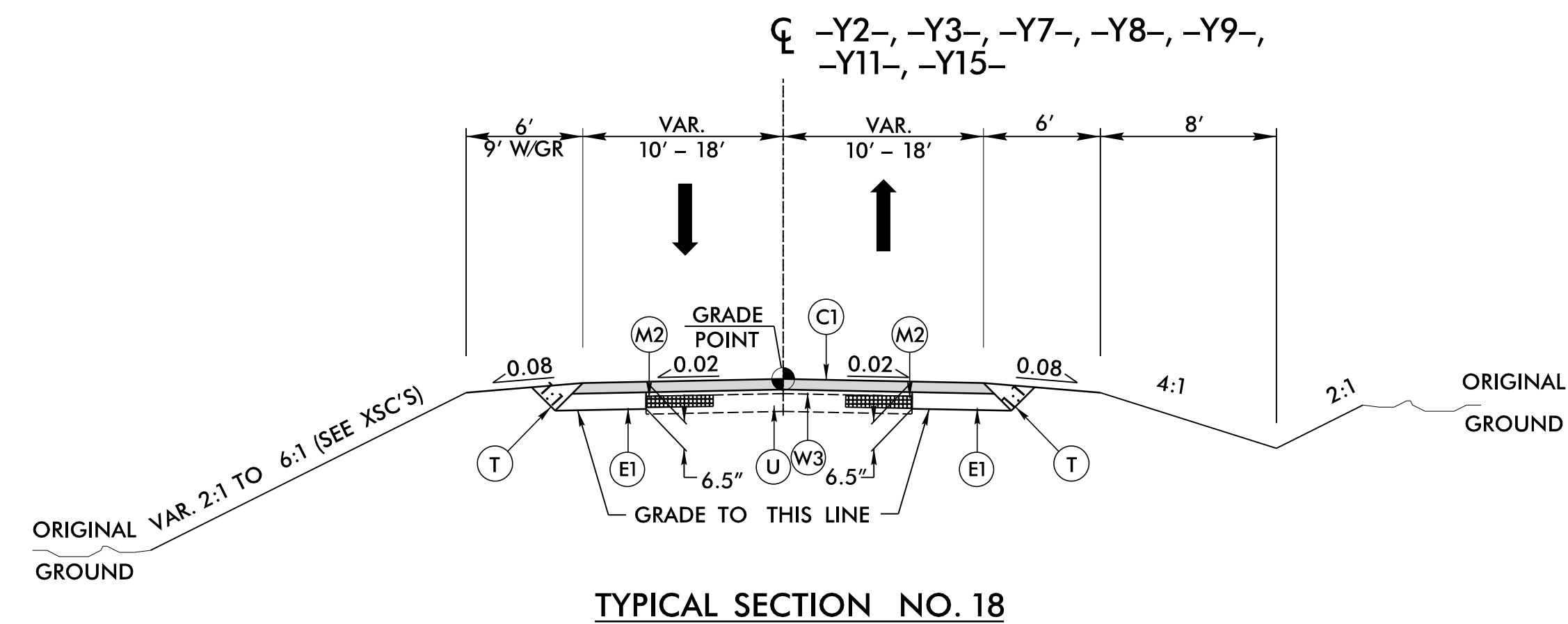
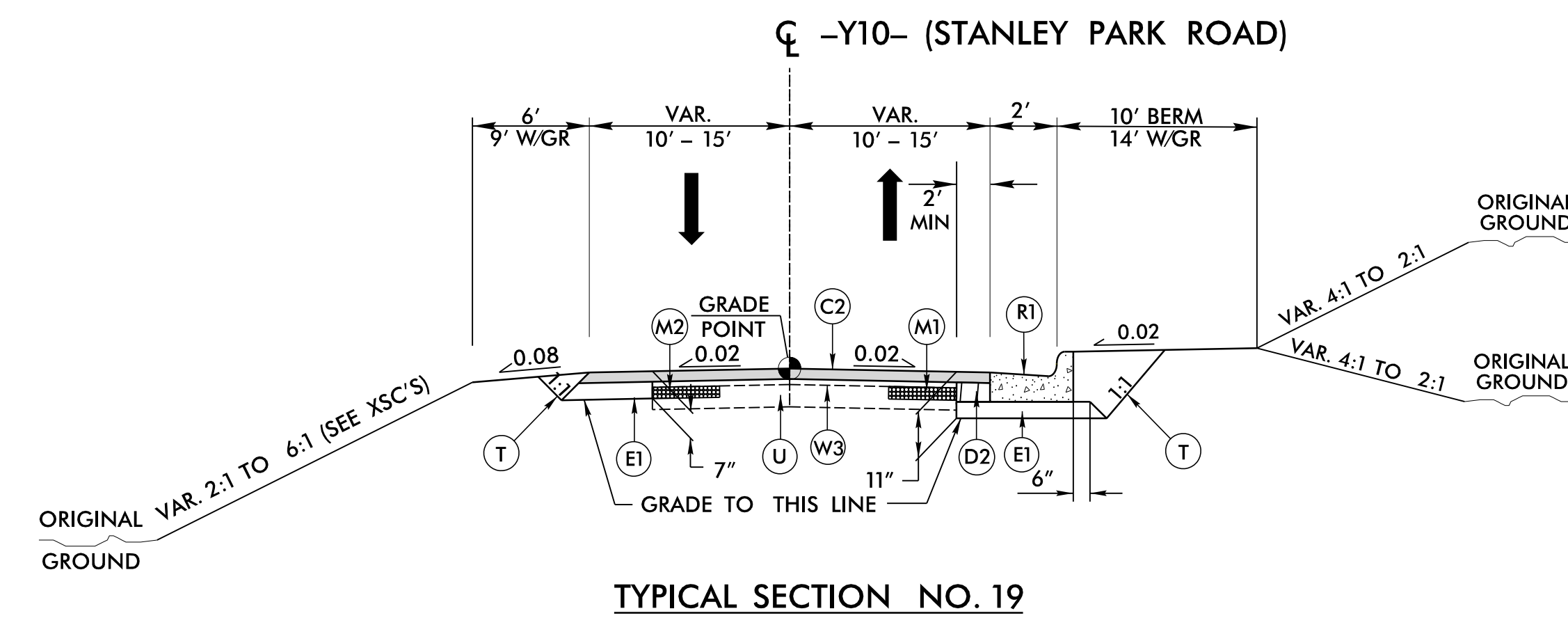


| PAVEMENT SCHEDULE<br>FINAL PAVEMENT DESIGN |                   |
|--|-------------------|
| C1   | 2½" TYPE S9.5B    |
| C2   | 3" TYPE S9.5B     |
| C3   | VAR. TYPE S9.5B   |
| C4   | 1½" TYPE S9.5C    |
| C5   | 3" TYPE S9.5C     |
| C6   | VAR. TYPE S9.5C   |
| D1   | 2½" TYPE I19.0C   |
| D2   | 4" TYPE I19.0C    |
| D3   | VAR. TYPE I19.0C  |
| E1   | 4" TYPE B25.0C    |
| E2   | 5½" TYPE B25.0C   |
| E3   | 6½" TYPE B25.0C   |
| E4   | VAR. TYPE B25.0C  |
| M1   | 4" BENCH MILLING  |
| M2   | 2½" BENCH MILLING |
| R1   | 2'-6" C & G       |
| R2   | 1'-6" C & G       |
| R3   | 5" CONC. ISLAND   |
| R4   | 8"x18" CURB       |
| S  | 4" SIDEWALK       |
| T  | EARTH MATERIAL    |
| U  | EXIST. PAVEMENT   |
| W  | WEDGING           |

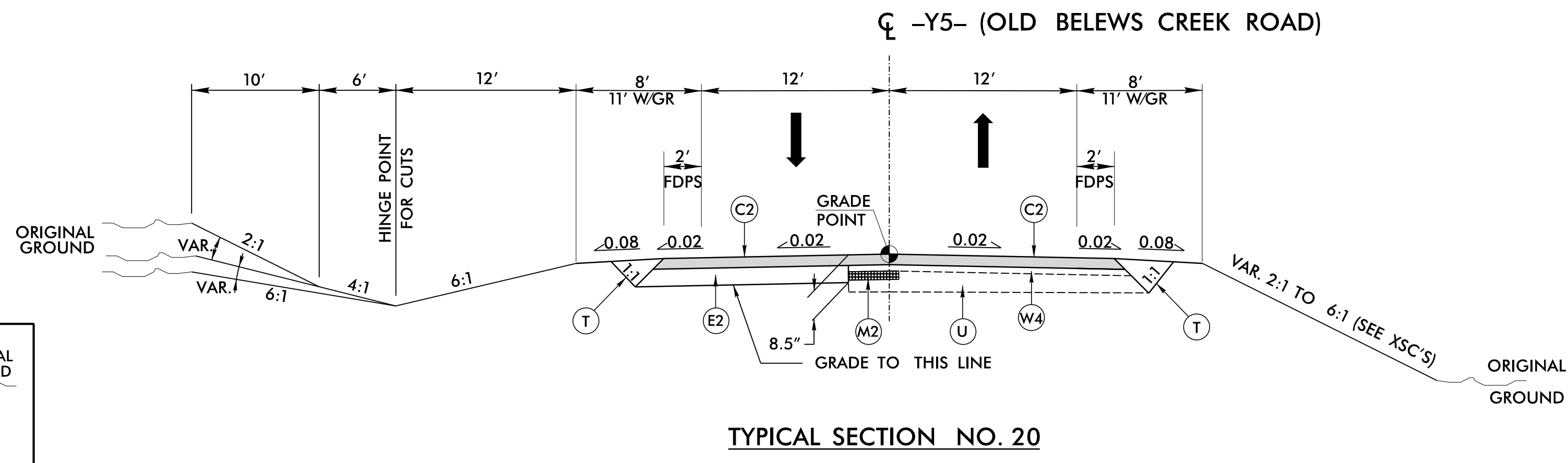


USE TYPICAL SECTION NO. 18  
 -Y2- STA. 12+00.00 TO STA. 14+11.53  
 -Y3- STA. 10+35.51 TO STA. 12+97.48  
 -Y7- STA. 11+01.81 TO STA. 12+00.00  
 -Y8- STA. 10+35.50 TO STA. 12+50.00  
 -Y9- STA. 10+35.75 TO STA. 11+50.00  
 -Y11- STA. 12+00.00 TO STA. 14+91.91  
 -Y15- STA. 11+25.00 TO STA. 13+50.00

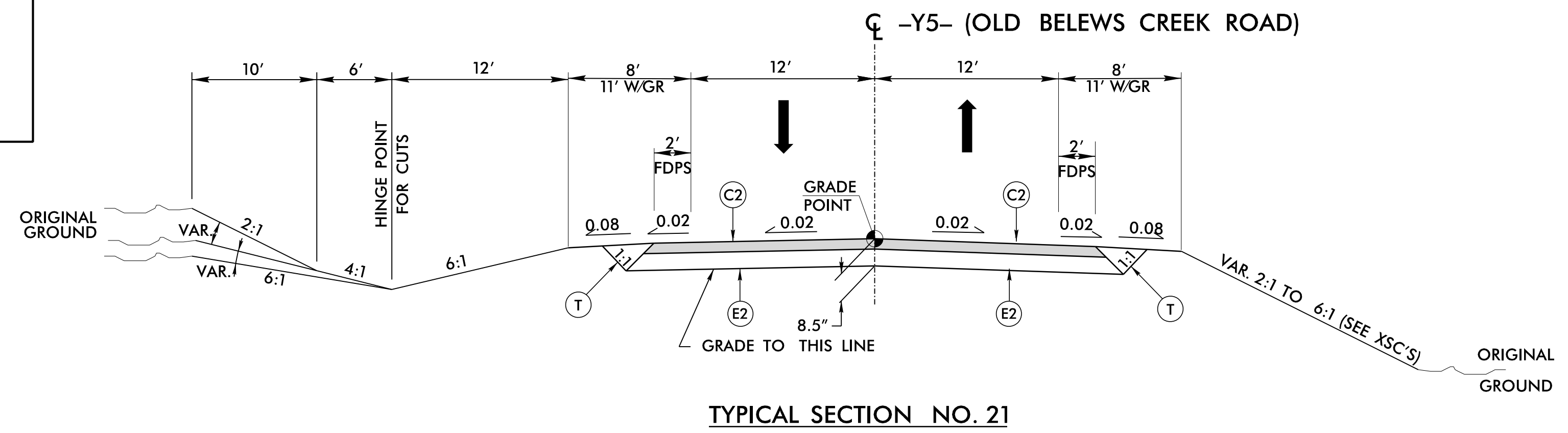
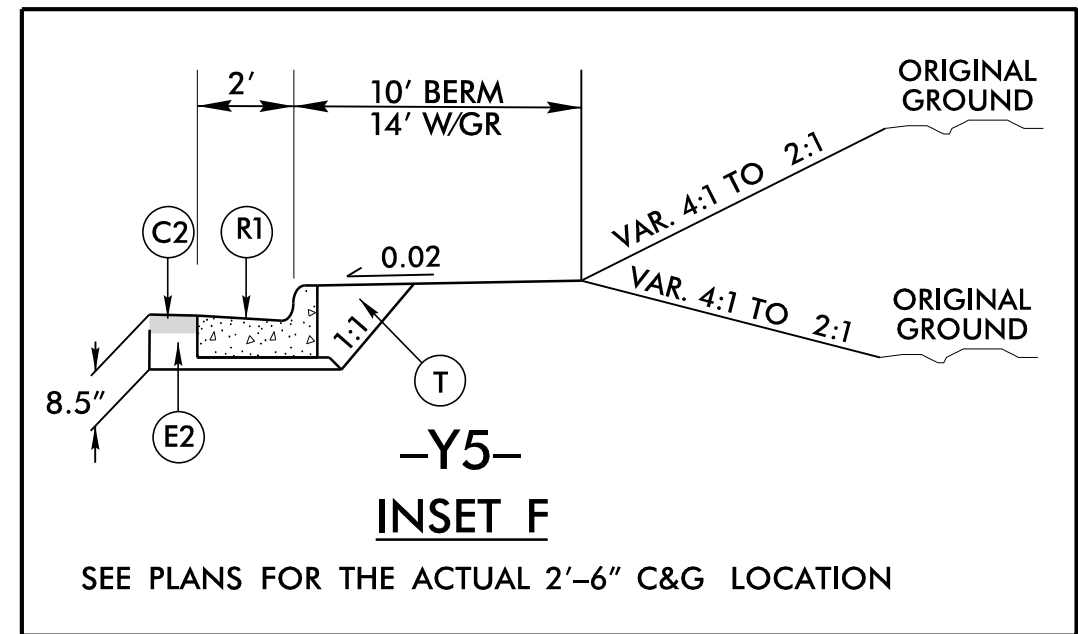
|  |  |
|--|--|
| PROJECT REFERENCE NO.<br>R-2577A   | SHEET NO.<br>2A-7  |
| ROADWAY DESIGN ENGINEER<br>SEAL 16725<br>D. BLEVINS                      | PAVEMENT DESIGN ENGINEER<br>SEAL 018969<br>CONNIE K. JAMES |
| <b>DOCUMENT NOT CONSIDERED FINAL<br/>UNLESS ALL SIGNATURES COMPLETED</b> |  |



USE TYPICAL SECTION NO. 19  
 -Y10- STA. 10+39.51 TO STA. 12+77.76



USE TYPICAL SECTION NO. 20  
 -Y5- STA. 10+15.82 TO STA. 14+00.00



USE TYPICAL SECTION NO. 21  
 -Y5- STA. 14+00.00 TO STA. 23+68.65

NOTE: PAVEMENT EDGE SLOPES ARE 1:1 UNLESS SHOWN OTHERWISE.  
 SEE PLANS FOR LOCATION OF CONCRETE ISLANDS.

**RK&K**  
 P: (919) 878-9560  
 6601 Six Forks Road, Forum 1, Suite 700  
 Raleigh, North Carolina 27615-3960  
 NC License No. F-0112

Engineers | Construction Managers | Planners | Scientists  
 www.rkk.com  
 Responsive People | Creative Solutions