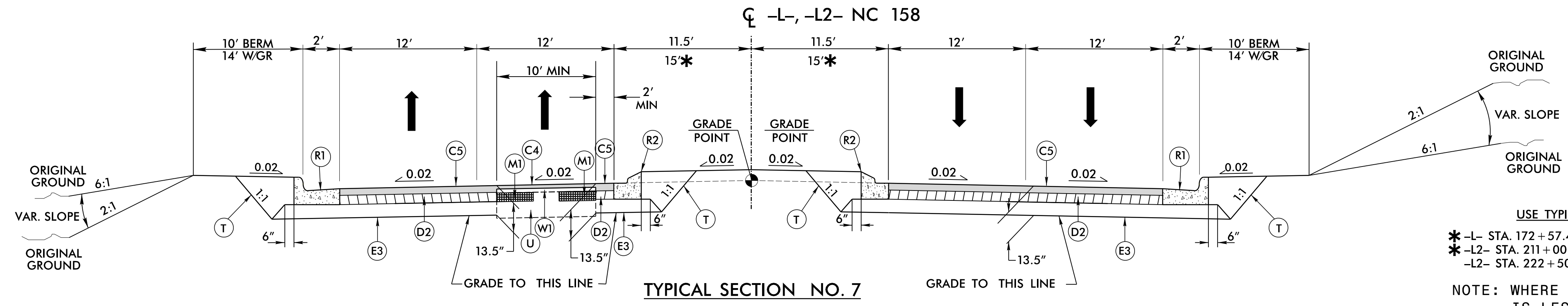


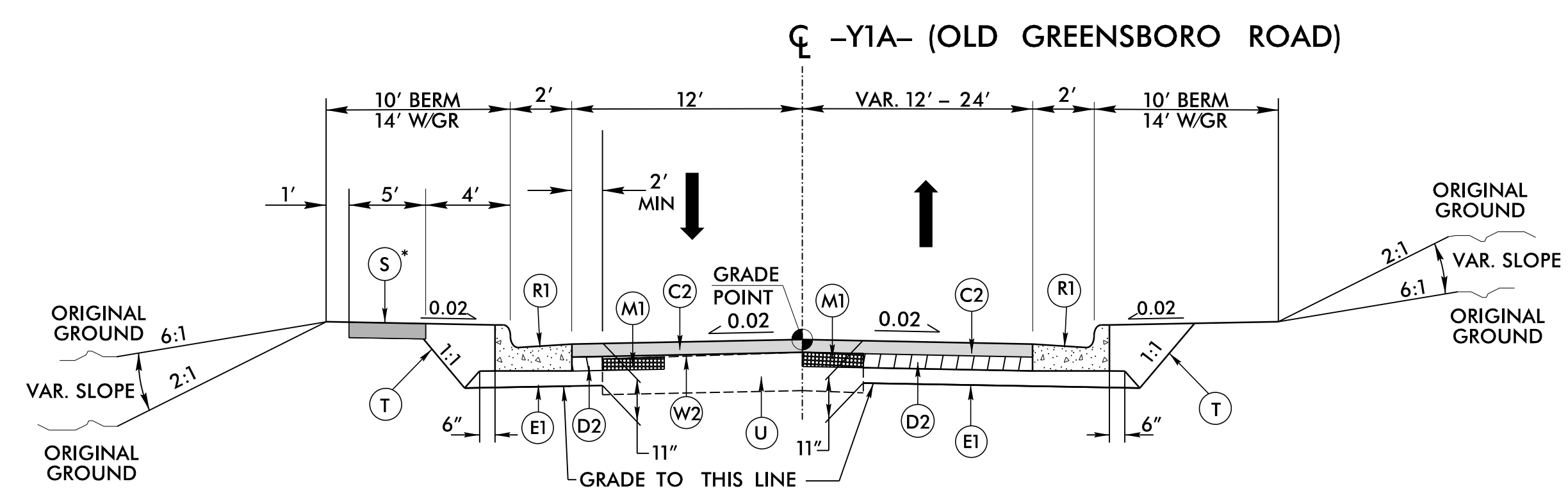
PAVEMENT SCHEDULE FINAL PAVEMENT DESIGN	
C1	2½" TYPE S9.5B
C2	3" TYPE S9.5B
C3	VAR. TYPE S9.5B
C4	1½" TYPE S9.5C
C5	3" TYPE S9.5C
C6	VAR. TYPE S9.5C
D1	2½" TYPE I19.0C
D2	4" TYPE I19.0C
D3	VAR. TYPE I19.0C
E1	4" TYPE B25.0C
E2	5½" TYPE B25.0C
E3	6½" TYPE B25.0C
E4	VAR. TYPE B25.0C
M1	4" BENCH MILLING
M2	2½" BENCH MILLING
R1	2'-6" C & G
R2	1'-6" C & G
R3	5" CONC. ISLAND
R4	8"x18" CURB
S	4" SIDEWALK
T	EARTH MATERIAL
U	EXIST. PAVEMENT
W	WEDGING

PROJECT REFERENCE NO. R-2577A	SHEET NO. 2A-4
ROADWAY DESIGN ENGINEER <i>Scott D. Blewins</i>	PAVEMENT DESIGN ENGINEER <i>Donnie K. James</i>
DOCUMENT NOT CONSIDERED FINAL UNLESS ALL SIGNATURES COMPLETED	



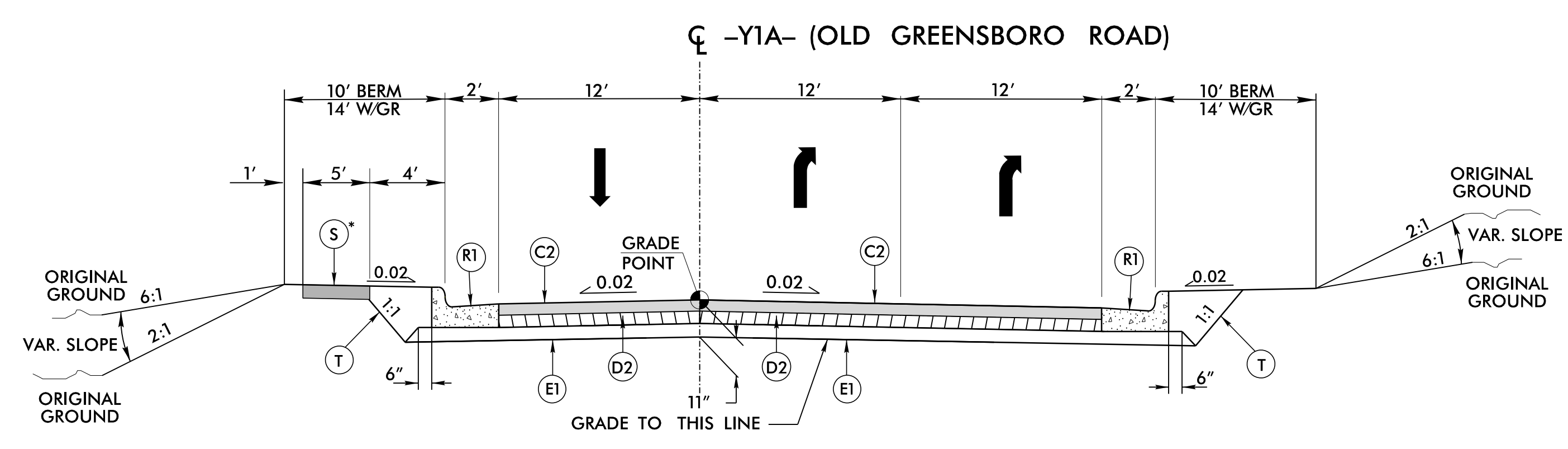
TYPICAL SECTION NO. 7

USE TYPICAL SECTION NO. 7
 * -L- STA. 172+57.48 (TIE TO U-2579B) TO STA. 178+00.00
 * -L2- STA. 211+00.00 TO STA. 212+75.00
 -L2- STA. 222+50.00 TO STA. 232+50.00
 NOTE: WHERE EXISTING CONCRETE PAVEMENT IS LESS THAN 10' IT WILL BE REMOVED.



TYPICAL SECTION NO. 8

USE TYPICAL SECTION NO. 8
 -Y1A- STA. 10+00.00 TO STA. 12+37.11
 *SEE PLANS FOR LOCATION OF SIDEWALK



TYPICAL SECTION NO. 9

USE TYPICAL SECTION NO. 9
 -Y1A- STA. 12+37.11 TO STA. 16+61.40
 *SEE PLANS FOR LOCATION OF SIDEWALK

NOTE: PAVEMENT EDGE SLOPES ARE 1:1 UNLESS SHOWN OTHERWISE.
 SEE PLANS FOR LOCATION OF CONCRETE ISLANDS.

RK&K
 P: (919) 878-9560
 6601 Six Forks Road, Forum 1, Suite 700
 Raleigh, North Carolina 27615-3960
 NC License No. F-0112
 Engineers | Construction Managers | Planners | Scientists
 www.rkk.com
 Responsive People | Creative Solutions