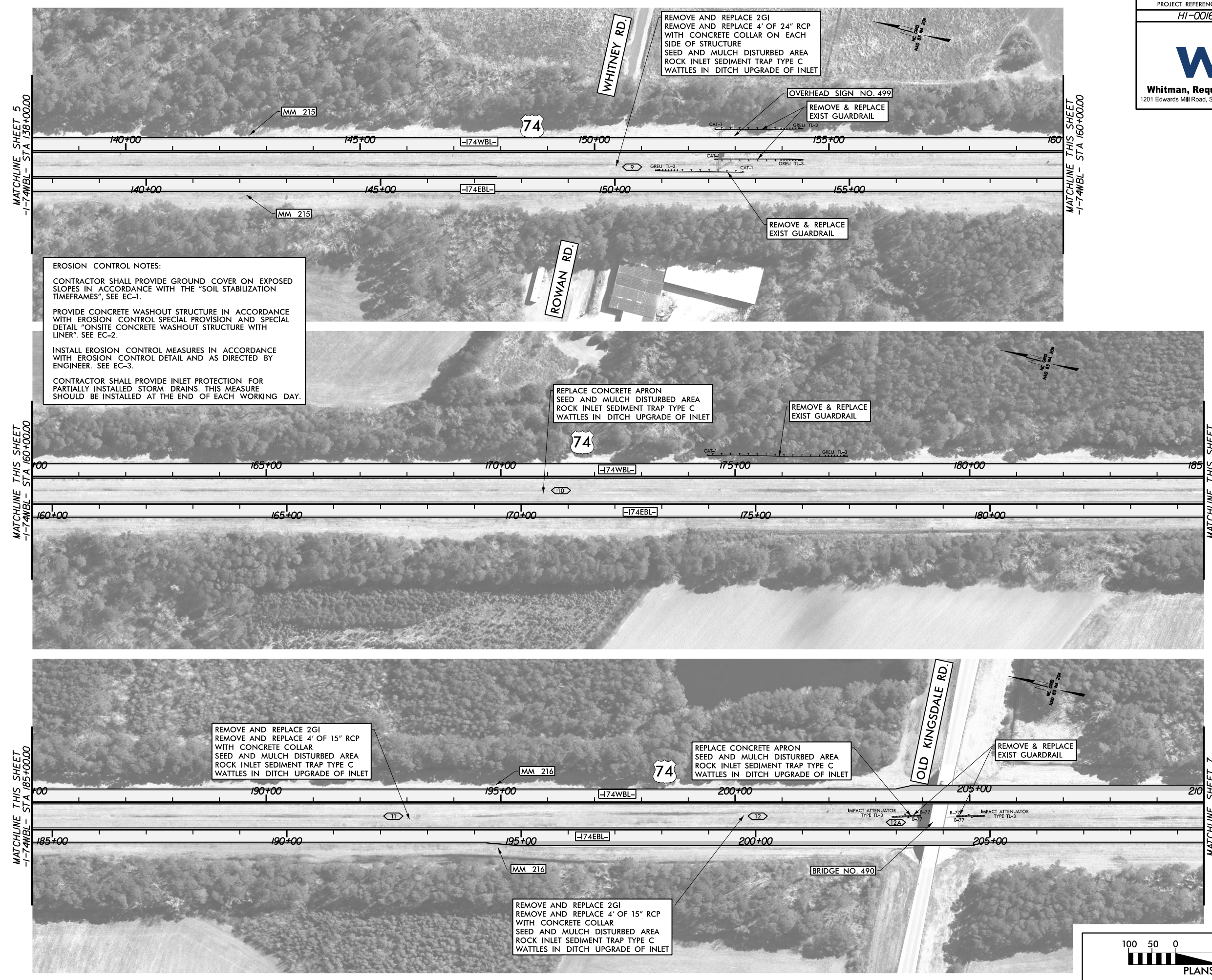




Whitman, Reardon & Associates, LLP
 1201 Edwards Mill Road, Suite 320, Raleigh, North Carolina 27606



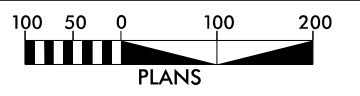
EROSION CONTROL NOTES:

CONTRACTOR SHALL PROVIDE GROUND COVER ON EXPOSED SLOPES IN ACCORDANCE WITH THE "SOIL STABILIZATION TIMEFRAMES", SEE EC-1.

PROVIDE CONCRETE WASHOUT STRUCTURE IN ACCORDANCE WITH EROSION CONTROL SPECIAL PROVISION AND SPECIAL DETAIL "ONSITE CONCRETE WASHOUT STRUCTURE WITH LINER". SEE EC-2.

INSTALL EROSION CONTROL MEASURES IN ACCORDANCE WITH EROSION CONTROL DETAIL AND AS DIRECTED BY ENGINEER. SEE EC-3.

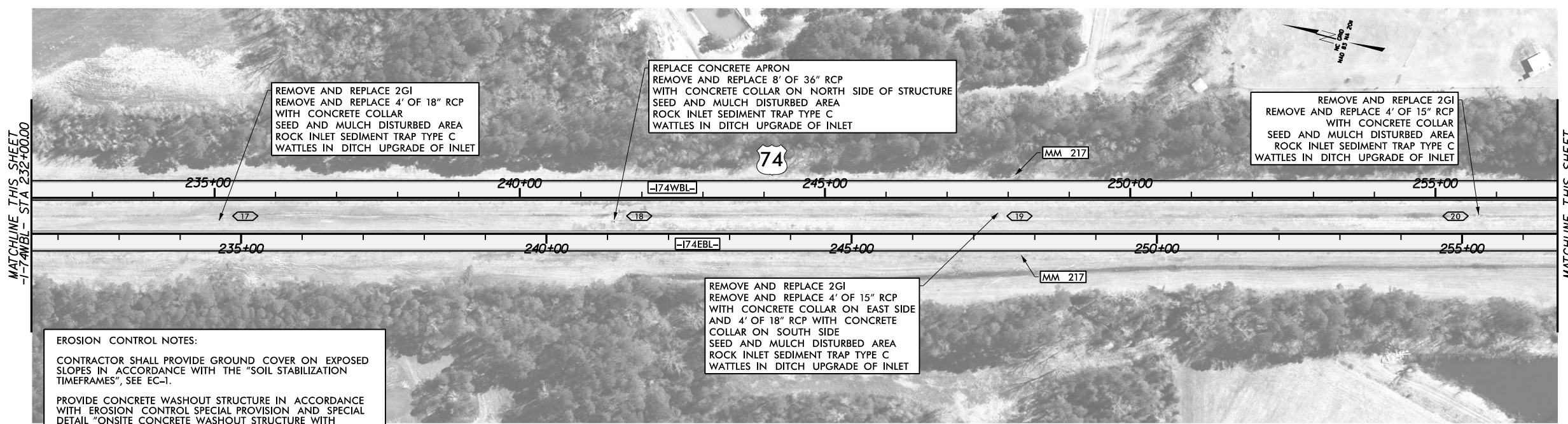
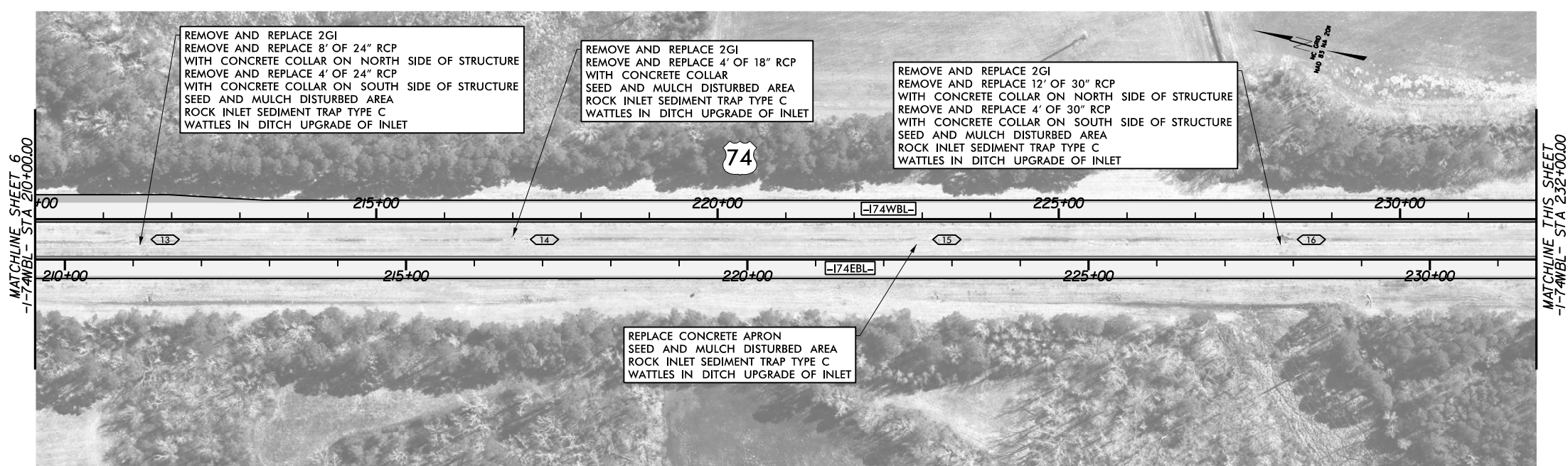
CONTRACTOR SHALL PROVIDE INLET PROTECTION FOR PARTIALLY INSTALLED STORM DRAINS. THIS MEASURE SHOULD BE INSTALLED AT THE END OF EACH WORKING DAY.



8/17/99
 R:\218 AM
 R:\218\0016-002\CADD\NCDOT\Roadway\Proj\HI-0016.RDY_PSH-06.dgn



Whitman, Reardon & Associates, LLP
1201 Edwards Mill Road, Suite 320, Raleigh, North Carolina 27606



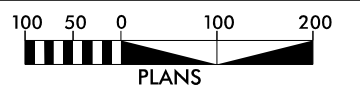
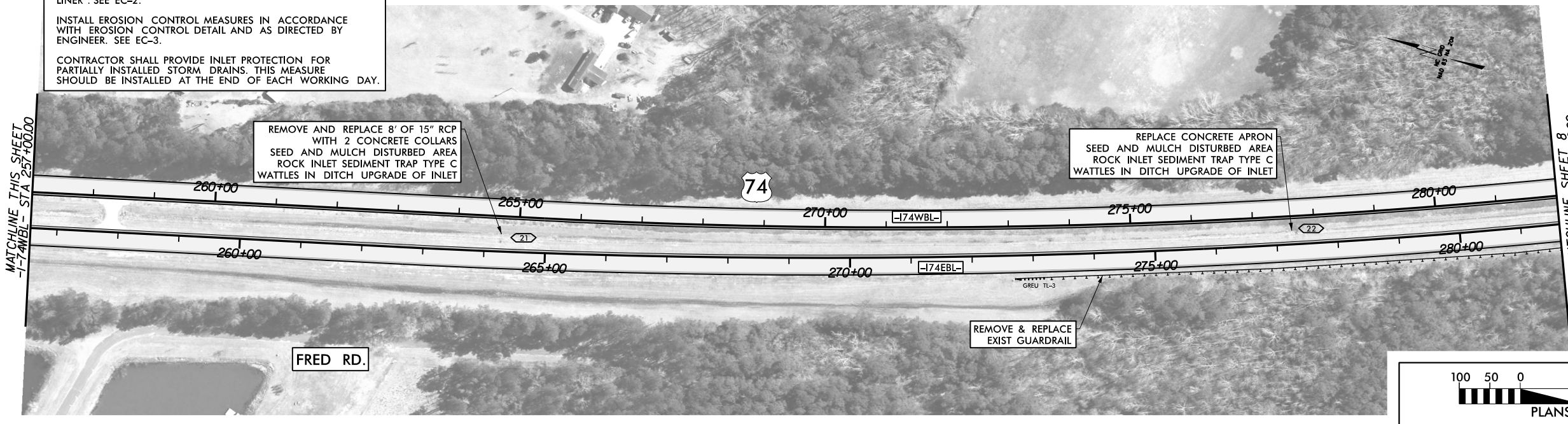
EROSION CONTROL NOTES:

CONTRACTOR SHALL PROVIDE GROUND COVER ON EXPOSED SLOPES IN ACCORDANCE WITH THE "SOIL STABILIZATION TIMEFRAMES", SEE EC-1.

PROVIDE CONCRETE WASHOUT STRUCTURE IN ACCORDANCE WITH EROSION CONTROL SPECIAL PROVISION AND SPECIAL DETAIL "ONSITE CONCRETE WASHOUT STRUCTURE WITH LINER". SEE EC-2.

INSTALL EROSION CONTROL MEASURES IN ACCORDANCE WITH EROSION CONTROL DETAIL AND AS DIRECTED BY ENGINEER. SEE EC-3.

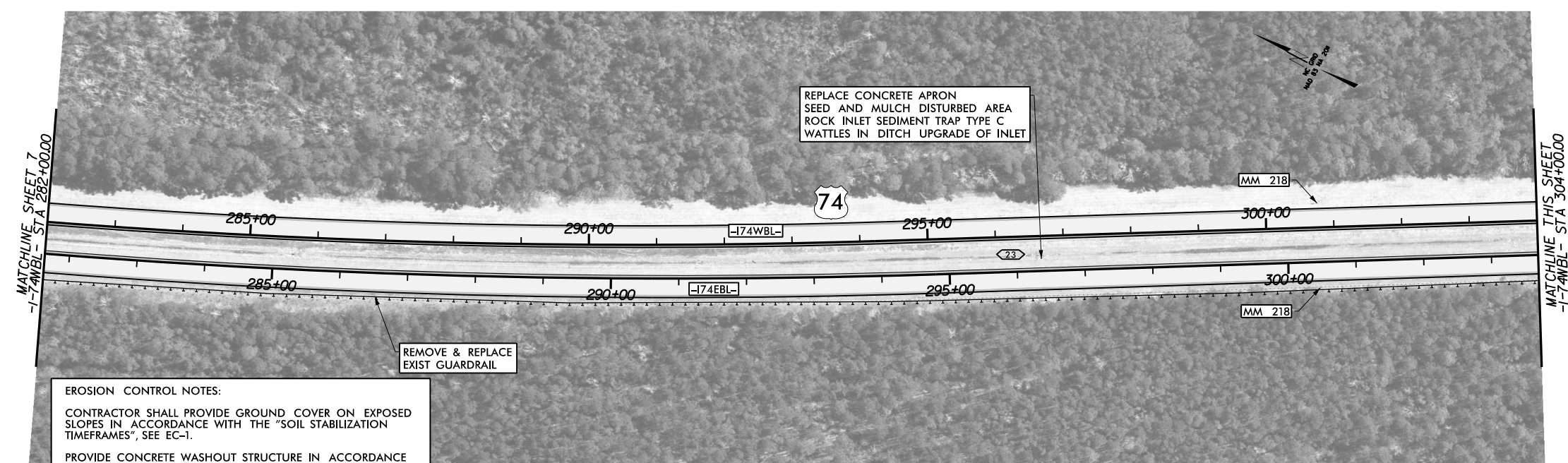
CONTRACTOR SHALL PROVIDE INLET PROTECTION FOR PARTIALLY INSTALLED STORM DRAINS. THIS MEASURE SHOULD BE INSTALLED AT THE END OF EACH WORKING DAY.



8/17/99
R:\2006\06\002\CADD\NCDOT\Roadway\Proj\HI-0016_RDY_PSH-07.dgn



Whitman, Reardon & Associates, LLP
1201 Edwards Mill Road, Suite 320, Raleigh, North Carolina 27606



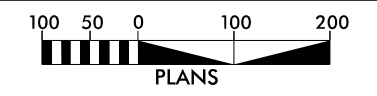
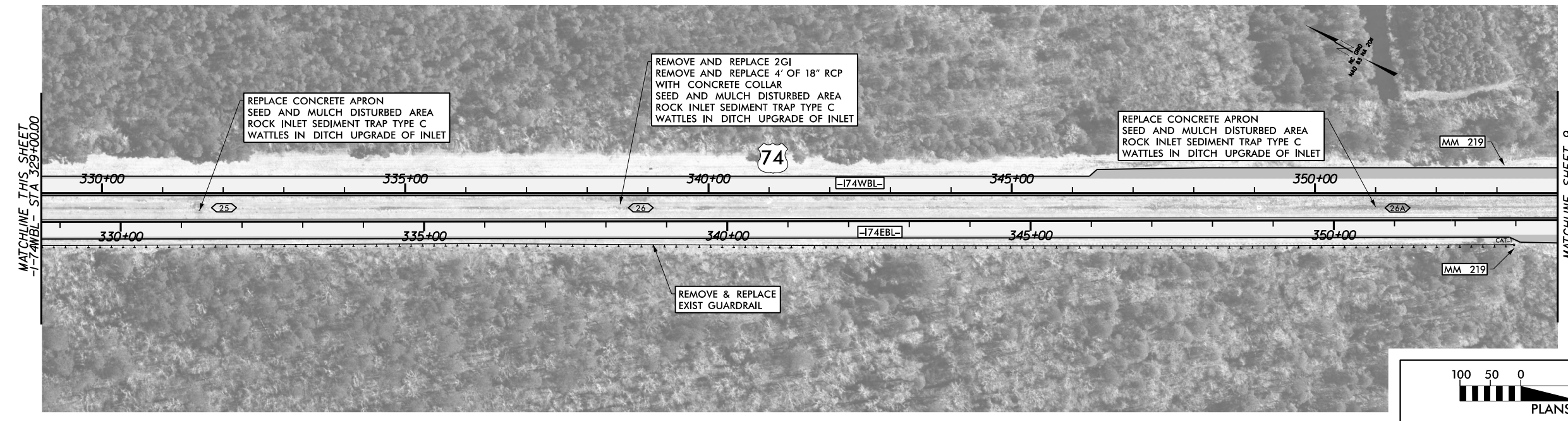
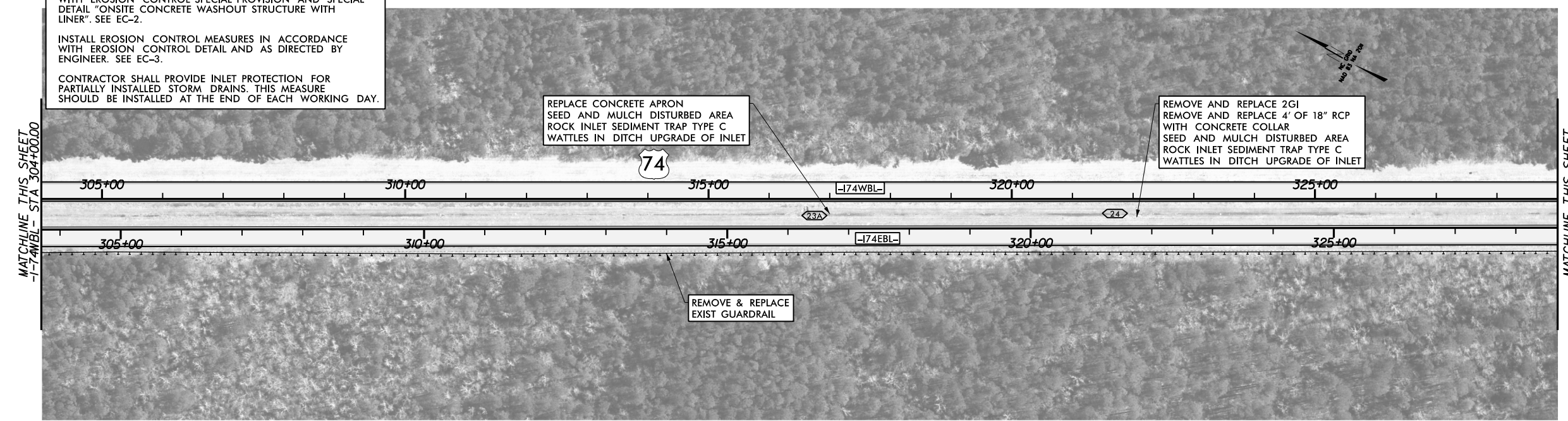
EROSION CONTROL NOTES:

CONTRACTOR SHALL PROVIDE GROUND COVER ON EXPOSED SLOPES IN ACCORDANCE WITH THE "SOIL STABILIZATION TIMEFRAMES", SEE EC-1.

PROVIDE CONCRETE WASHOUT STRUCTURE IN ACCORDANCE WITH EROSION CONTROL SPECIAL PROVISION AND SPECIAL DETAIL "ONSITE CONCRETE WASHOUT STRUCTURE WITH LINER". SEE EC-2.

INSTALL EROSION CONTROL MEASURES IN ACCORDANCE WITH EROSION CONTROL DETAIL AND AS DIRECTED BY ENGINEER. SEE EC-3.

CONTRACTOR SHALL PROVIDE INLET PROTECTION FOR PARTIALLY INSTALLED STORM DRAINS. THIS MEASURE SHOULD BE INSTALLED AT THE END OF EACH WORKING DAY.



8/17/99
R:\2002\CADD\NCDOT\Roadway\Proj\HI-0016.RDY_PSH-08.dgn
9:27:22 AM
R:\2002\CADD\NCDOT\Roadway\Proj\HI-0016.RDY_PSH-08.dgn