

NOTES

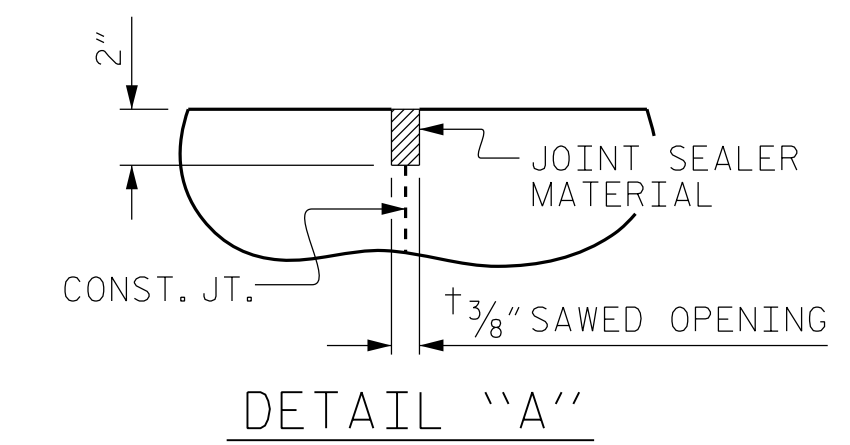
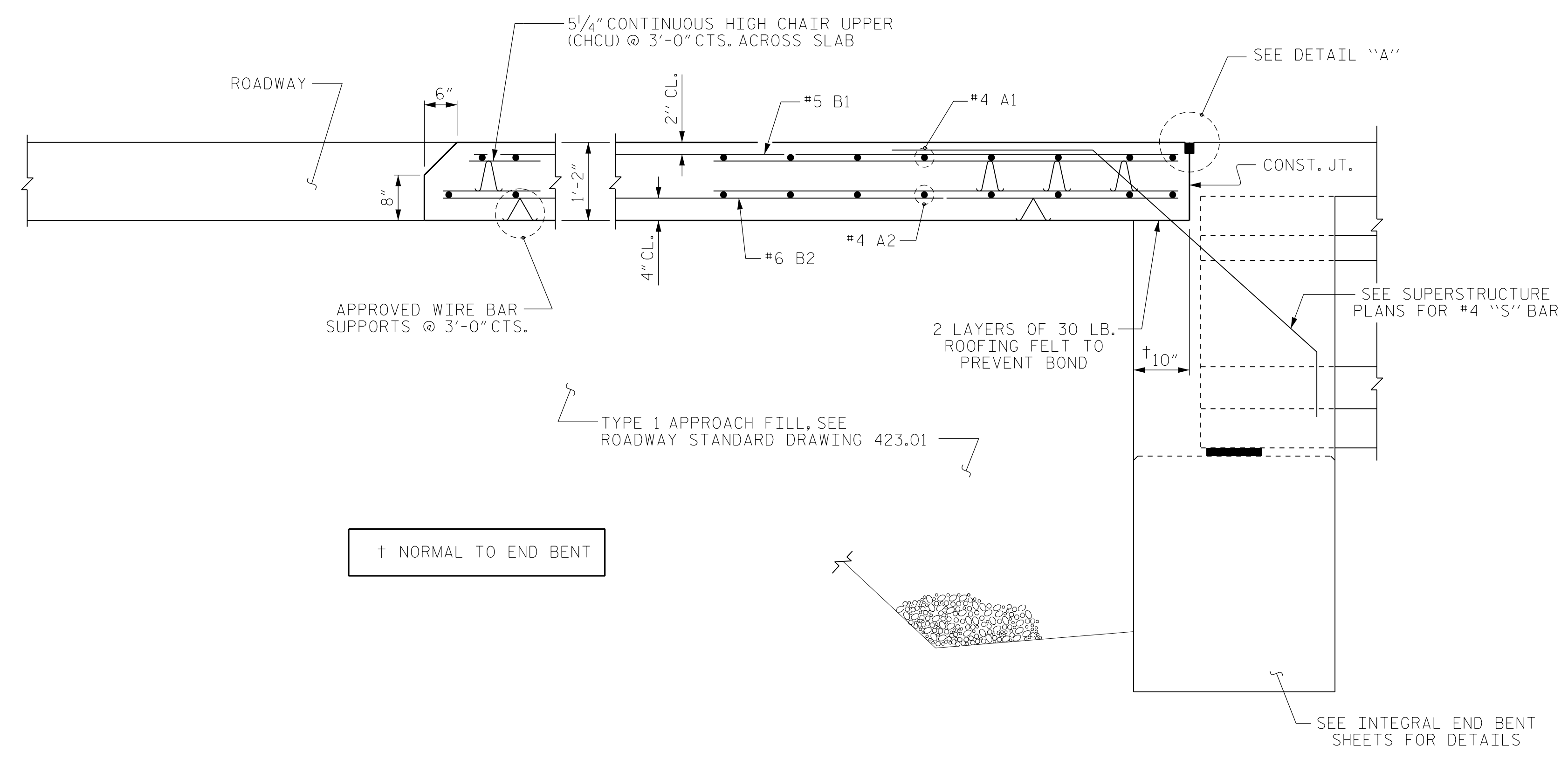
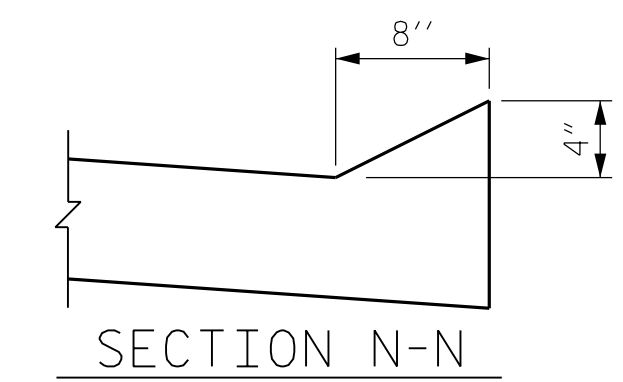
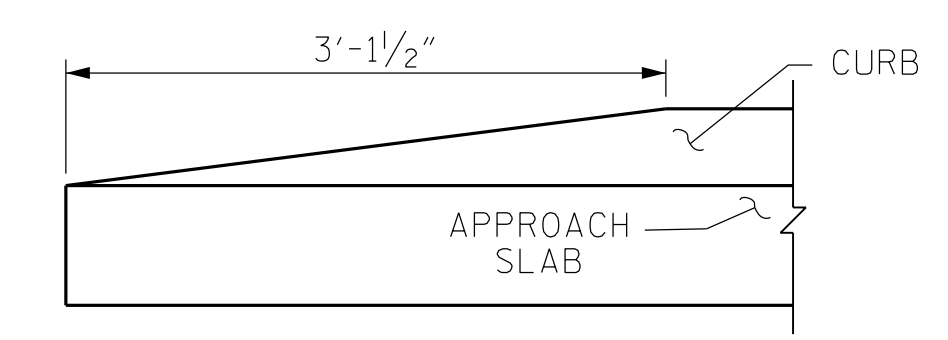
FOR BRIDGE APPROACH FILL, SEE ROADWAY PLANS.
 APPROACH SLAB SHALL NOT BE CONSTRUCTED PRIOR TO COMPLETION OF THE BRIDGE DECK.
 AREA BETWEEN THE WINGWALL AND APPROACH SLAB SHALL BE GRADED TO DRAIN THE WATER AWAY FROM THE FILL FACE OF THE BRIDGE AND SHALL BE PAVED. SEE ROADWAY PLANS.
 THE JOINT OPENING AT THE APPROACH SLAB/DECK INTERFACE SHALL BE SAWS NO MORE THAN 12 HOURS AFTER THE APPROACH SLAB IS CAST. THE JOINT SHALL BE CLEANED OF ALL DEBRIS BEFORE THE SEALANT IS APPLIED. THE JOINT SEALER MATERIAL SHALL CONFORM TO THE REQUIREMENTS OF SECTION 1028-3 OF THE STANDARD SPECIFICATIONS.
 AT THE CONTRACTORS OPTION "TYPE 1A - ALTERNATE APPROACH FILL" (ROADWAY STD.423.02) MAY BE CONSTRUCTED AT NO ADDITIONAL COST TO THE DEPARTMENT IN LIEU OF "TYPE 1 - APPROACH FILL".

BILL OF MATERIAL
 FOR ONE APPROACH SLAB
 (2 REQ'D)

BAR	NO.	SIZE	TYPE	LENGTH	WEIGHT
* A1	52	#4	STR	24'-11"	866
A2	52	#4	STR	24'-9"	860
* B1	90	#5	STR	24'-2"	2,269
B2	90	#6	STR	24'-8"	3,334
REINFORCING STEEL				LBS.	4,194
* EPOXY COATED REINFORCING STEEL				LBS.	3,135
CLASS AA CONCRETE				C. Y.	49.0

SPLICE LENGTHS

BAR SIZE	EPOXY COATED	UNCOATED
#4	1'-11"	1'-7"
#5	2'-5"	2'-0"
#6	3'-7"	2'-5"



PROJECT NO. BR-0069
 CASWELL COUNTY
 STATION: 20+18.00 -L-
 SHEET 1 OF 2



STATE OF NORTH CAROLINA
 DEPARTMENT OF TRANSPORTATION
 RALEIGH

BRIDGE APPROACH SLAB

DRAWN BY : J. WEIGER DATE : 8-2023
 CHECKED BY : J. LOFTUS DATE : 8-2023
 DESIGN ENGINEER OF RECORD : J. LOFTUS DATE : 3-2024

moffatt & nichol
 4700 FALLS OF NEUSE ROAD, SUITE 300
 RALEIGH, NORTH CAROLINA 27609
 (919) 781-4626 VOICE (919) 781-4869 FAX
 NC License No.: F-0105

DOCUMENT NOT CONSIDERED
 FINAL UNLESS ALL
 SIGNATURES COMPLETED

REVISIONS

NO.	BY:	DATE:	NO.	BY:	DATE:
1			3		
2			4		

SHEET NO. S-36
 TOTAL SHEETS 38

3/20/2024 02:19:10 PM \\sfr\structures\01-CADD\02-FinalDrawings\01-071-BR0069-SMU-AS01-036-160001.dgn jloftus