

NOTES:

STIRRUPS IN CAP MAY BE SHIFTED AS NECESSARY TO CLEAR #5 V1 BARS.

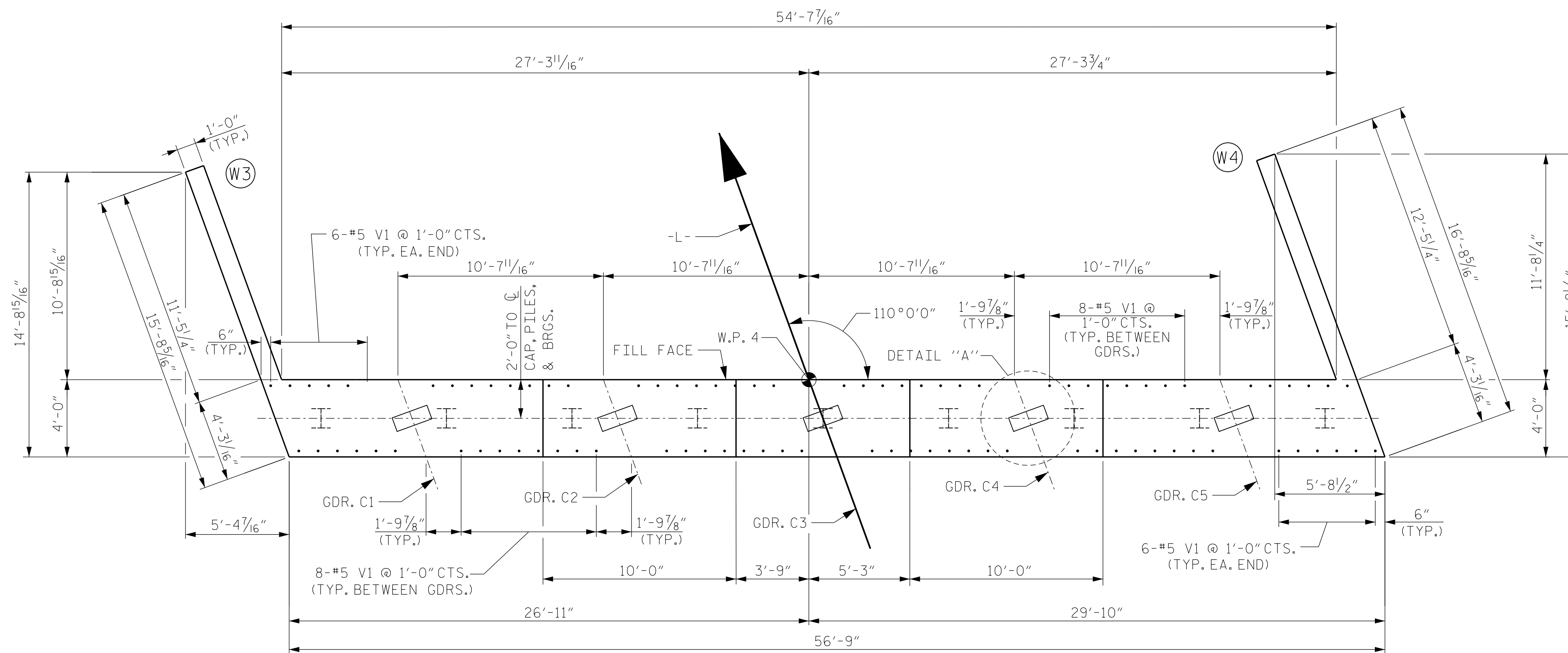
SEE THE SUPERSTRUCTURE SHEETS FOR UPPER PART OF THE INTEGRAL END BENT DETAIL.

THE TOP SURFACE OF THE END BENT CAP AND WINGS, EXCLUDING THE BEARING AREA, SHALL BE RAKED TO A DEPTH OF 1/4".

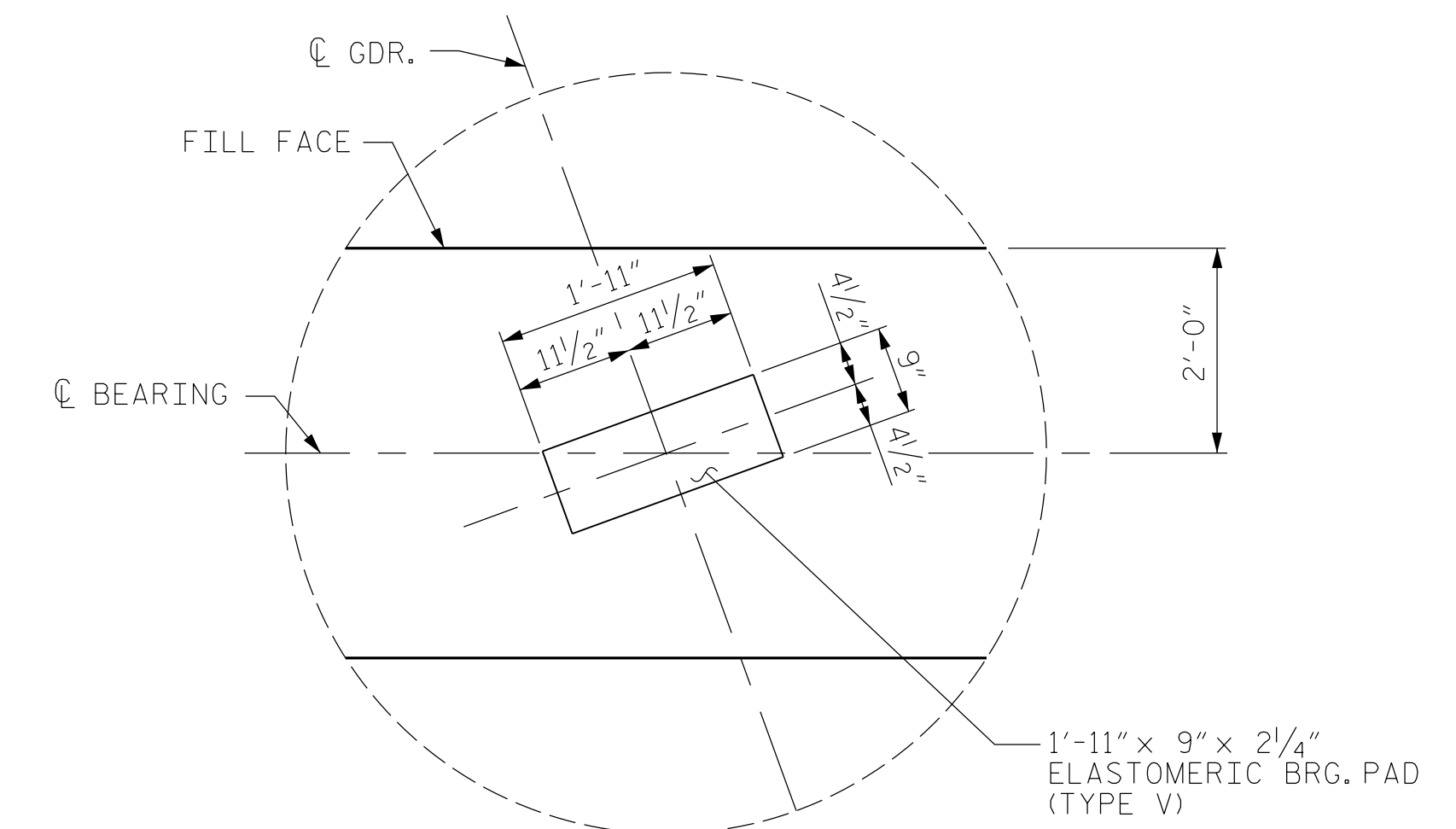
FOR SECTIONS A-A & B-B, SEE SHEET 3 OF 3.

FOR "CORROSION PROTECTION FOR STEEL PILES DETAIL", SEE SHEET 3 OF 3.

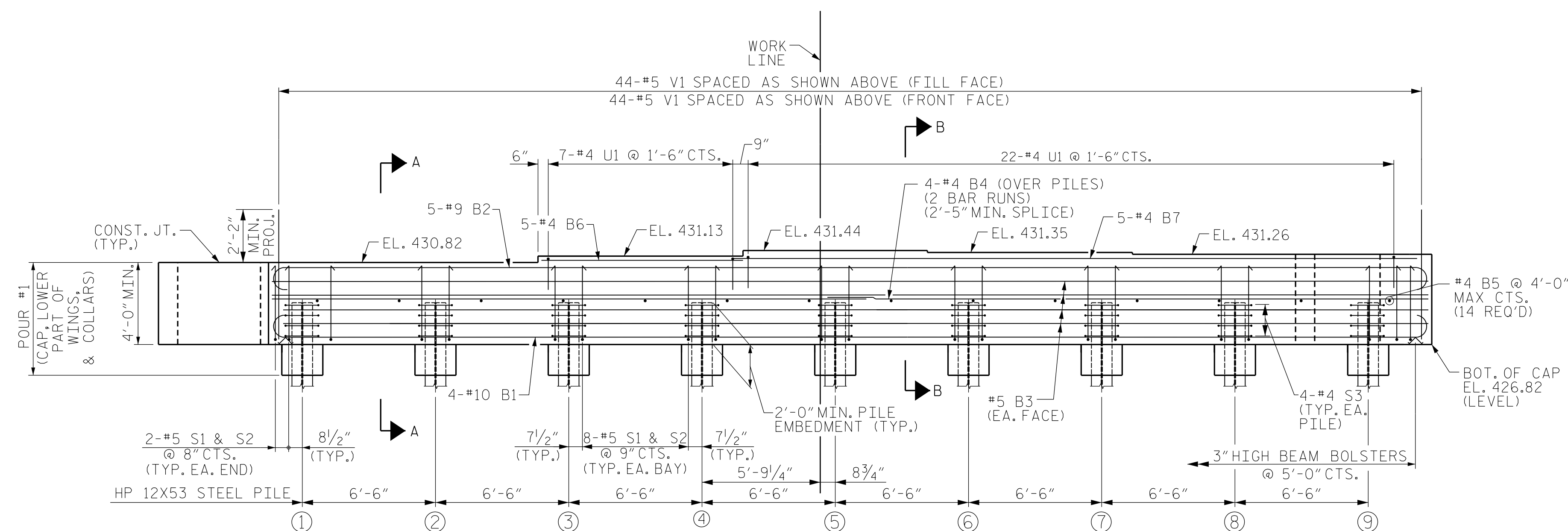
THE UPPER PART OF INTEGRAL PORTION AND WINGS SHALL BE POURED WITH THE SUPERSTRUCTURE. SEE SUPERSTRUCTURE PLAN OF SPANS.



PLAN OF CAP
CONCRETE COLLARS FOR STEEL PILES NOT SHOWN FOR CLARITY.



DETAIL "A"
(TYP. EACH GIRDER)



ELEVATION
(REINFORCING IN WING NOT SHOWN FOR CLARITY)

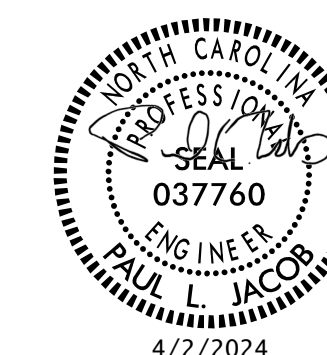
PROJECT NO. BR-0069

CASWELL COUNTY

STATION: 20+18.00 -L-

SHEET 1 OF 3

STATE OF NORTH CAROLINA
DEPARTMENT OF TRANSPORTATION
RALEIGH
SUBSTRUCTURE
INTEGRAL END BENT 2



REVISIONS

NO.	BY:	DATE:	NO.	BY:	DATE:
1			3		
2			4		

SHEET NO.
S-32
TOTAL SHEETS
38

DRAWN BY : M. ROSEMOND DATE : 6-2023
CHECKED BY : J. LOFTUS DATE : 8-2023
DESIGN ENGINEER OF RECORD: J. LOFTUS DATE : 3-2024

moffatt & nichol
4700 FALLS OF NEUSE ROAD, SUITE 300
RALEIGH, NORTH CAROLINA 27609
(919) 781-4626 VOICE (919) 781-4869 FAX
NC License NO.: F-0105

DOCUMENT NOT CONSIDERED
FINAL UNLESS ALL
SIGNATURES COMPLETED

3/20/2024 02:16:10 PM I:\109\BR-0069\Structure\01-CADD\02-Final Drawings\01_063_BR0069_SML\E201_032_160001.dgn jloftus