

NOTES:

STIRRUPS IN CAP MAY BE SHIFTED AS NECESSARY TO CLEAR #5 V1 BARS.

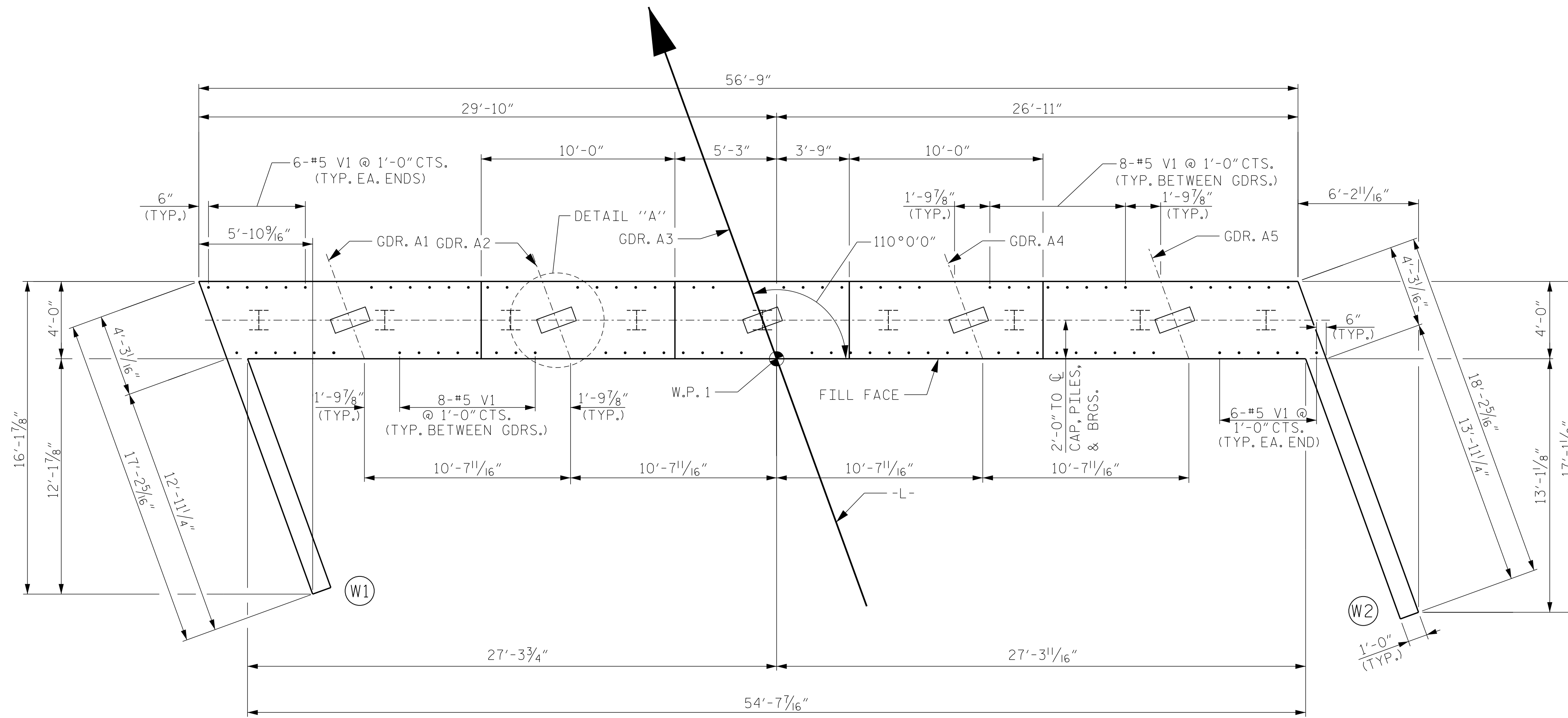
SEE THE SUPERSTRUCTURE SHEETS FOR UPPER PART OF THE INTEGRAL END BENT DETAIL.

THE TOP SURFACE OF THE END BENT CAP AND WINGS, EXCLUDING THE BEARING AREA, SHALL BE RAKED TO A DPTH OF 1/4".

FOR SECTIONS A-A & B-B, SEE SHEET 3 OF 3.

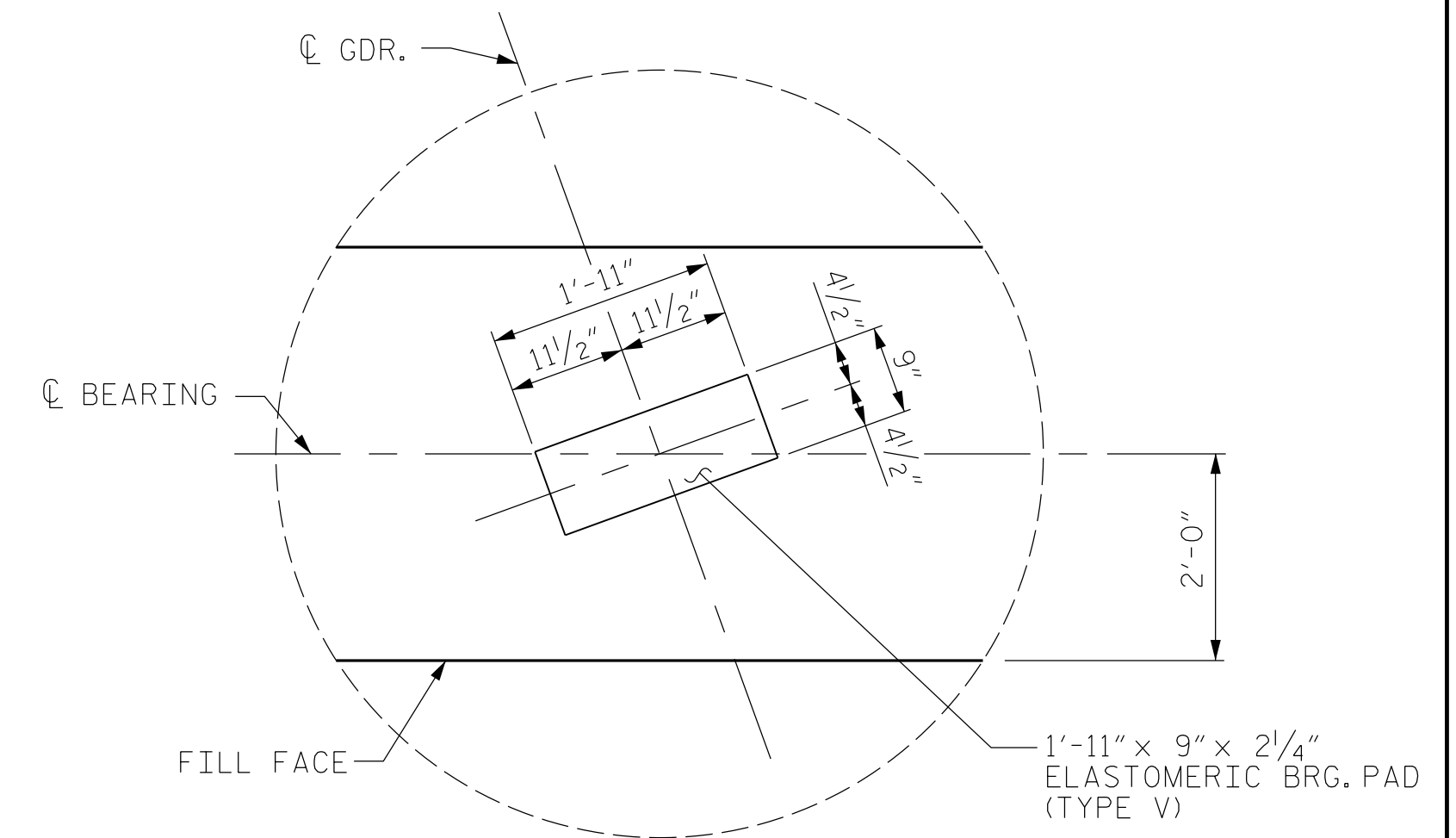
FOR "CORROSION PROTECTION FOR STEEL PILES DETAIL", SEE SHEET 3 OF 3

THE UPPER PART OF INTEGRAL PORTION AND WINGS SHALL BE POURED WITH THE SUPERSTRUCTURE. SEE SUPERSTRUCTURE PLAN OF SPANS.



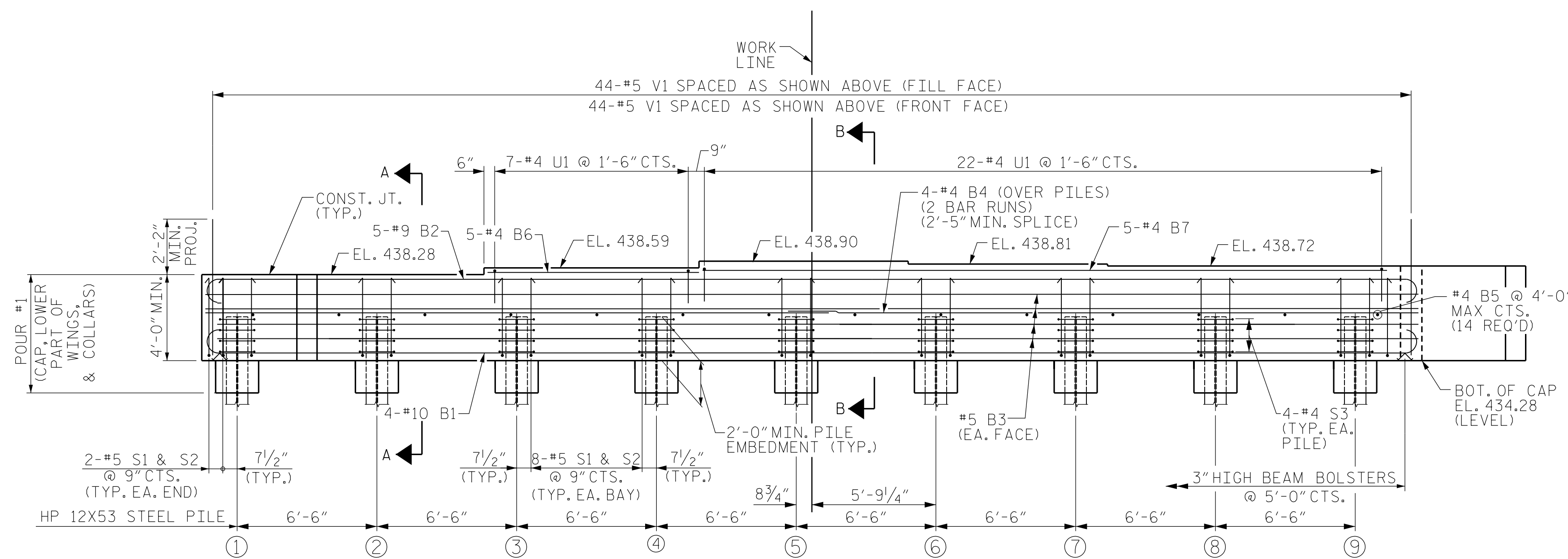
PLAN OF CAP

CONCRETE COLLARS FOR STEEL PILES NOT SHOWN FOR CLARITY.



DETAIL "A"

(TYP. EACH GIRDER)



ELEVATION

(REINFORCING IN WING NOT SHOWN FOR CLARITY)

PROJECT NO. BR-0069

CASWELL COUNTY

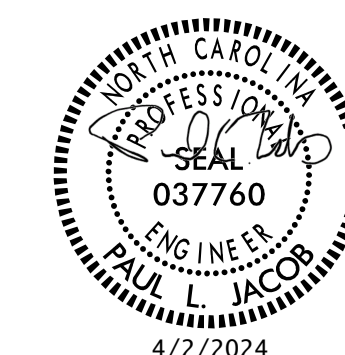
STATION: 20+18.00 -L-

SHEET 1 OF 3

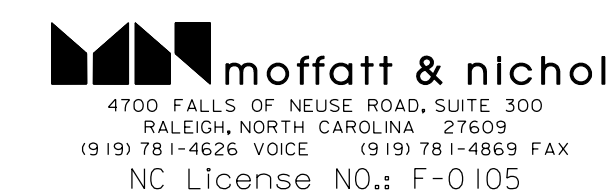
STATE OF NORTH CAROLINA
DEPARTMENT OF TRANSPORTATION
RALEIGH

SUBSTRUCTURE

INTEGRAL END BENT 1



4/2/2024



DOCUMENT NOT CONSIDERED
FINAL UNLESS ALL
SIGNATURES COMPLETED

REVISIONS						SHEET NO.
NO.	BY:	DATE:	NO.	BY:	DATE:	S-25
1			3			TOTAL SHEETS
2			4			38

DRAWN BY : M. ROSEMOND DATE : 6-2023
 CHECKED BY : J. LOFTUS DATE : 8-2023
 DESIGN ENGINEER OF RECORD: J. LOFTUS DATE : 3-2024

3/20/2024 02:19:10 PM \\1091\BR-0069\Structures\01-CADD\02-FinalDrawings\01_049_BR0069_SMJ.EI01.025.160001.dgn jloftus