

SUPERSTRUCTURE REINFORCING STEEL LENGTHS ARE BASED ON THE FOLLOWING MINIMUM SPLICE LENGTHS

BAR SIZE	SUPERSTRUCTURE EXCEPT APPROACH SLABS, PARAPETS, AND BARRIER RAILS		APPROACH SLABS		PARAPETS AND BARRIER RAILS
	EPOXY COATED	UNCOATED	EPOXY COATED	UNCOATED	
#4	1'-11"	1'-7"	1'-11"	1'-7"	2'-6"
#5	2'-5"	2'-0"	2'-5"	2'-0"	3'-1"
#6	2'-10"	2'-5"	3'-7"	2'-5"	3'-8"
#7	4'-2"	2'-9"			
#8	4'-9"	3'-2"			

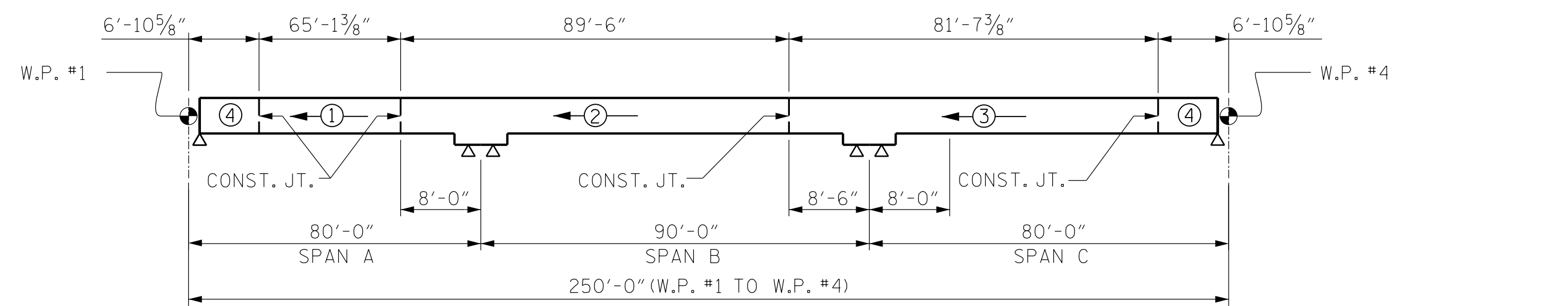
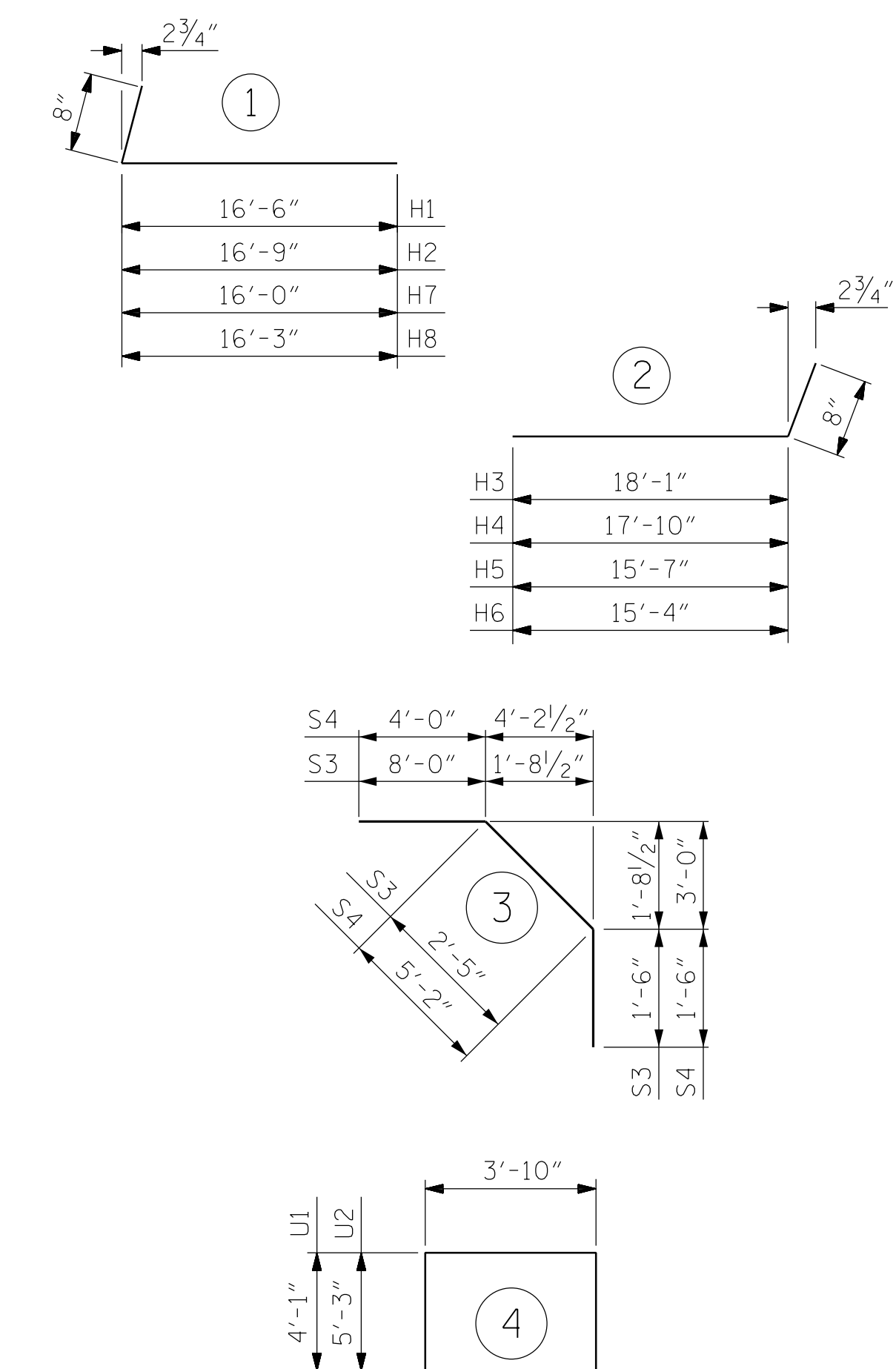
GROOVING BRIDGE FLOORS

APPROACH SLABS	1,982	SQ.FT.
BRIDGE DECK	10,164	SQ.FT.
TOTAL	12,146	SQ.FT.

BILL OF MATERIAL

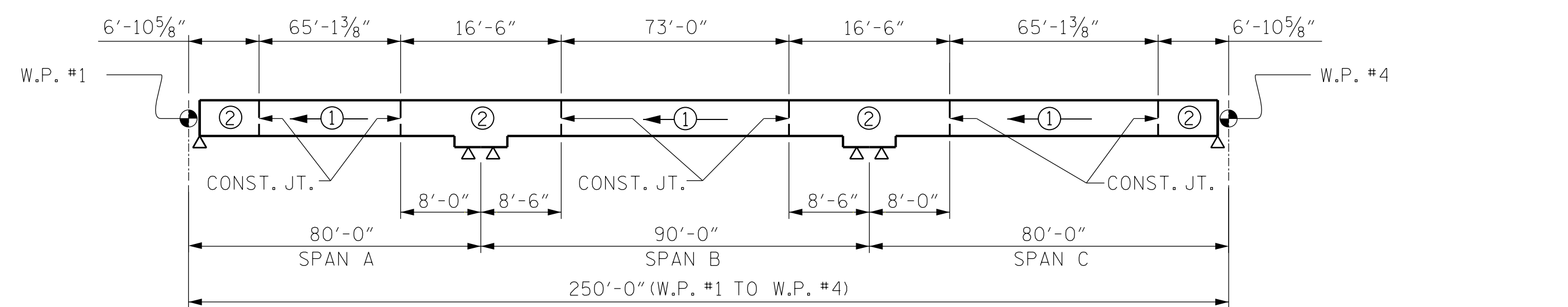
BAR	NO.	SIZE	TYPE	LENGTH	WEIGHT	BAR	NO.	SIZE	TYPE	LENGTH	WEIGHT
*A1	462	#5	STR	46'-10"	22,567	A219	2	#5	STR	21'-1"	44
A2	462	#5	STR	46'-10"	22,567	A220	2	#5	STR	19'-8"	41
						A221	2	#5	STR	18'-4"	38
*A101	2	#5	STR	45'-9"	95	A222	2	#5	STR	16'-11"	35
*A102	2	#5	STR	44'-5"	93	A223	2	#5	STR	15'-7"	33
*A103	2	#5	STR	43'-0"	90	A224	2	#5	STR	14'-2"	30
*A104	2	#5	STR	41'-8"	87	A225	2	#5	STR	12'-10"	27
*A105	2	#5	STR	40'-3"	84	A226	2	#5	STR	11'-5"	24
*A106	2	#5	STR	38'-11"	81	A227	2	#5	STR	10'-1"	21
*A107	2	#5	STR	37'-7"	78	A228	2	#5	STR	8'-8"	18
*A108	2	#5	STR	36'-2"	75	A229	2	#5	STR	7'-4"	15
*A109	2	#5	STR	34'-10"	73	A230	2	#5	STR	5'-11"	12
*A110	2	#5	STR	33'-5"	70	A231	2	#5	STR	4'-7"	10
*A111	2	#5	STR	32'-1"	67	A232	2	#5	STR	3'-2"	7
*A112	2	#5	STR	30'-8"	64						
*A113	2	#5	STR	29'-4"	61	*B1	224	#4	STR	37'-1"	5,549
*A114	2	#5	STR	27'-11"	58	*B2	124	#6	STR	16'-0"	2,980
*A115	2	#5	STR	26'-7"	55	*B3	124	#4	STR	35'-6"	2,941
*A116	2	#5	STR	25'-2"	52	*B4	62	#4	STR	23'-0"	953
*A117	2	#5	STR	23'-10"	50	*B5	62	#4	STR	39'-11"	1,653
*A118	2	#5	STR	22'-5"	47	B6	280	#5	STR	51'-3"	14,967
*A119	2	#5	STR	21'-1"	44	B7	100	#4	STR	15'-0"	1,002
*A120	2	#5	STR	19'-8"	41	B8	100	#4	STR	30'-7"	2,043
*A121	2	#5	STR	18'-4"	38						
*A122	2	#5	STR	16'-11"	35	K1	20	#4	STR	28'-11"	386
*A123	2	#5	STR	15'-7"	33	K2	8	#4	STR	8'-0"	43
*A124	2	#5	STR	14'-2"	30	K3	16	#4	STR	8'-6"	91
*A125	2	#5	STR	12'-10"	27	K4	16	#4	STR	9'-7"	102
*A126	2	#5	STR	11'-5"	24	K5	4	#4	STR	5'-5"	14
*A127	2	#5	STR	10'-1"	21	K6	8	#4	STR	5'-9"	31
*A128	2	#5	STR	8'-8"	18	K7	8	#4	STR	6'-3"	33
*A129	2	#5	STR	7'-4"	15	K8	20	#4	STR	2'-8"	36
*A130	2	#5	STR	5'-11"	12						
*A131	2	#5	STR	4'-7"	10	H1	13	#6	1	17'-2"	335
*A132	2	#5	STR	3'-2"	7	H2	13	#6	1	17'-5"	340
						H3	13	#6	2	18'-9"	366
						H4	13	#6	2	18'-6"	361
A201	2	#5	STR	45'-9"	95	H5	12	#6	2	16'-3"	293
A202	2	#5	STR	44'-5"	93	H6	12	#6	2	16'-0"	288
A203	2	#5	STR	43'-0"	90	H7	12	#6	1	16'-8"	300
A204	2	#5	STR	41'-8"	87	H8	12	#6	1	16'-11"	305
A205	2	#5	STR	40'-3"	84						
A206	2	#5	STR	38'-11"	81						
A207	2	#5	STR	37'-7"	78	*S3	76	#4	3	11'-11"	605
A208	2	#5	STR	36'-2"	75	*S4	76	#4	3	10'-8"	542
A209	2	#5	STR	34'-10"	73						
A210	2	#5	STR	33'-5"	70	U1	76	#4	4	12'-0"	609
A211	2	#5	STR	32'-1"	67	U2	12	#4	4	14'-4"	115
A212	2	#5	STR	30'-8"	64						
A213	2	#5	STR	29'-4"	61	V4	64	#5	STR	5'-9"	384
A214	2	#5	STR	27'-11"	58	V5	28	#5	STR	5'-2"	151
A215	2	#5	STR	26'-7"	55	V6	29	#5	STR	5'-4"	161
A216	2	#5	STR	25'-2"	52						
A217	2	#5	STR	23'-10"	50						
A218	2	#5	STR	22'-5"	47						

BAR TYPES



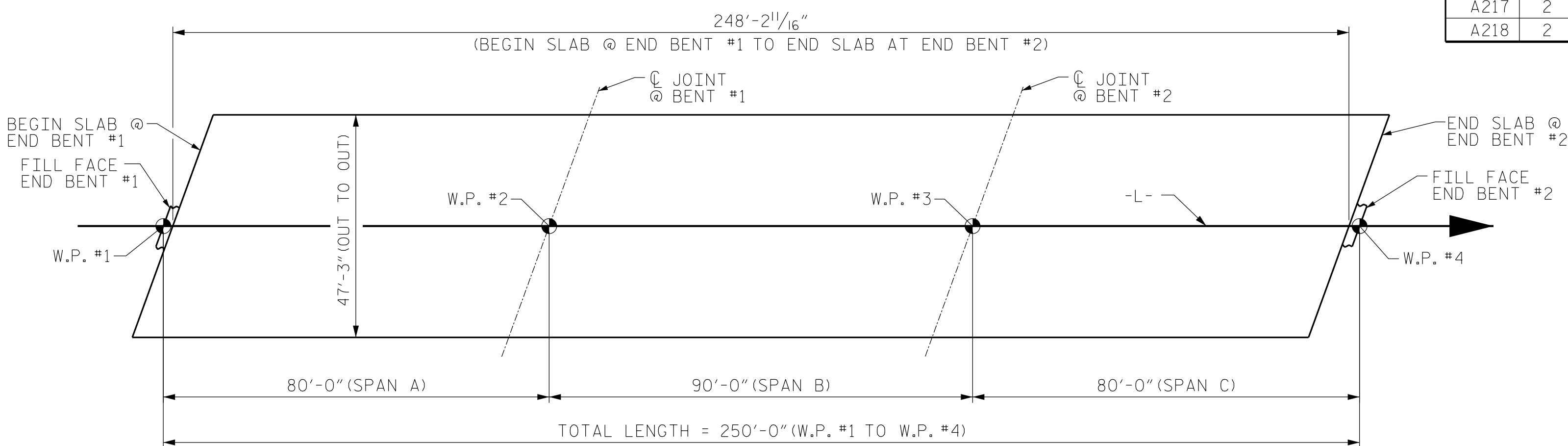
POURING SEQUENCE

POURS CAN NOT BE STARTED UNTIL ADJACENT POURS REACH A MINIMUM OF 3000 PSI. KEY: ⊕ = INDICATES POUR NUMBER AND DIRECTION OF POUR



OPTIONAL POURING SEQUENCE

* POUR 2 CAN NOT BE STARTED UNTIL BOTH ADJACENT 1 POURS REACH A MINIMUM OF 3000 PSI. KEY: ⊕ = INDICATES POUR NUMBER AND DIRECTION OF POUR



LAYOUT FOR COMPUTING AREA REINFORCED CONCRETE DECK SLAB (SQ. FT. = 11,729)



—SUPERSTRUCTURE BILL OF MATERIAL—

	CLASS AA CONCRETE (CU. YDS.)	REINFORCING STEEL (LBS.)	*EPOXY COATED REINFORCING STEEL (LBS.)
POUR 1	100.8		
POUR 2	138.6		
POUR 3	126.4		
POUR 4	102.9		
TOTALS**	468.7	46,958	39,364

**QUANTITIES FOR BARRIER RAIL ARE NOT INCLUDED

PROJECT NO. BR-0069
CASWELL COUNTY
STATION: 20+18.00 -L-

STATE OF NORTH CAROLINA
DEPARTMENT OF TRANSPORTATION
RALEIGH
SUPERSTRUCTURE
BILL OF MATERIAL

DRAWN BY: J. WEIGER DATE: 7-2023
CHECKED BY: J. LOFTUS DATE: 8-2023
DESIGN ENGINEER OF RECORD: J. LOFTUS DATE: 3-2024

moffatt & nichol
4700 FALLS OF NEUSE ROAD, SUITE 300
RALEIGH, NORTH CAROLINA 27609
(919) 781-4626 VOICE (919) 781-4869 FAX
NC License NO.: F-0105

DOCUMENT NOT CONSIDERED FINAL UNLESS ALL SIGNATURES COMPLETED

REVISIONS						SHEET NO.
NO.	BY:	DATE:	NO.	BY:	DATE:	S-24
1			3			TOTAL SHEETS
2			4			38

3/20/2024 02:19:10 PM \\1001-109\BR-0069\Structures\01-CADD\02-Final Drawings\01_047_BR0069_SMJ_BM01_024_160001.dgn jofFus