

09/28/09

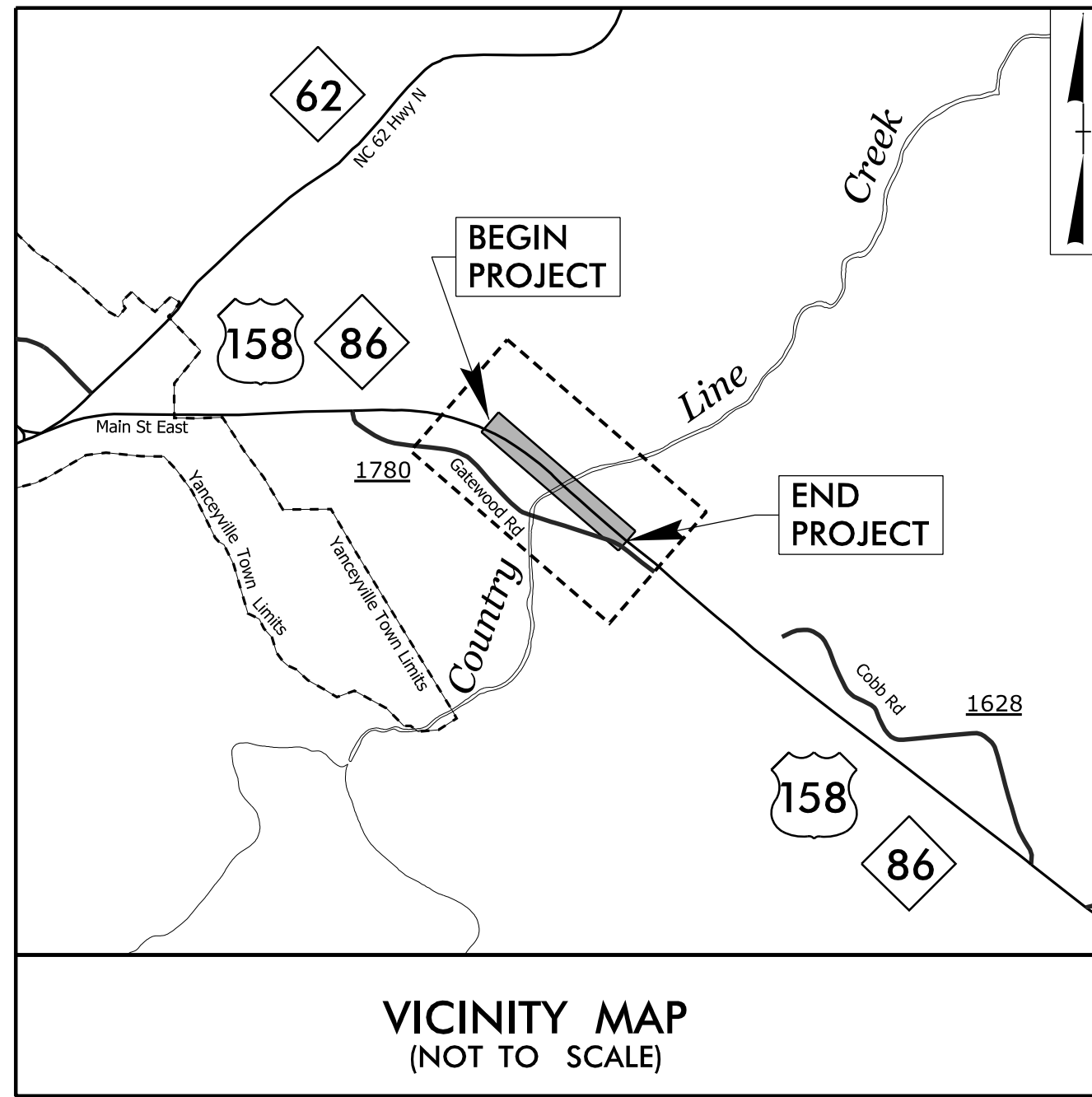
3/18/2024 G:\RA\1001\109\BR-0069\Structures\01-CADD\02-Find Drawings\401-000-BR0069-SMU-TSH.dgn jioffus

TIP PROJECT: BR-0069

CONTRACT: C204762

STRUCTURES

See Sheet 1B For Conventional Symbols



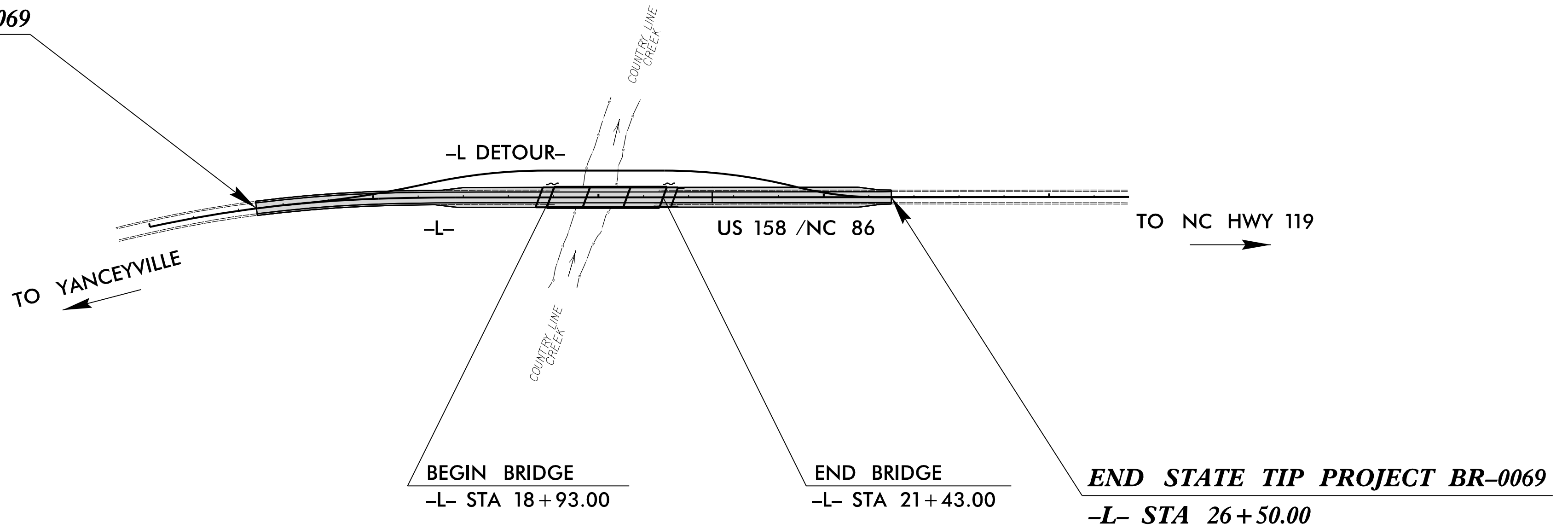
STATE OF NORTH CAROLINA
DIVISION OF HIGHWAYS

CASWELL COUNTY

**LOCATION: BRIDGE NO. 160001 OVER COUNTRY LINE CREEK ON
US 158 / NC 86**
TYPE OF WORK: GRADING, DRAINAGE, PAVING, AND STRUCTURES

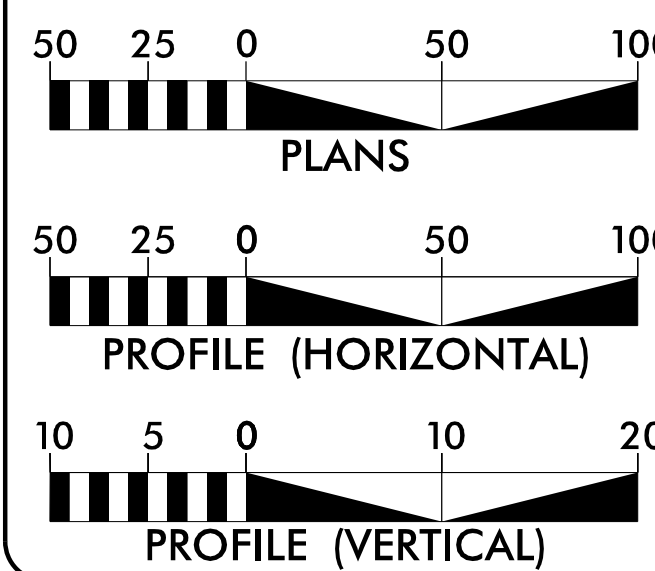
STATE	STATE PROJECT REFERENCE NO.	SHEET NO.	TOTAL SHEETS
N.C.	BR-0069	1	
STATE PROJ. NO.	F.A. PROJ. NO.	DESCRIPTION	
67069.1.1	N/A	PE	
67069.2.1	N/A	ROW/UTIL	
67069.3.1	N/A	CONST	

BEGIN STATE TIP PROJECT BR-0069
-L- STA 12+40.00



DOCUMENT NOT CONSIDERED FINAL
UNLESS ALL SIGNATURES COMPLETED

GRAPHIC SCALES



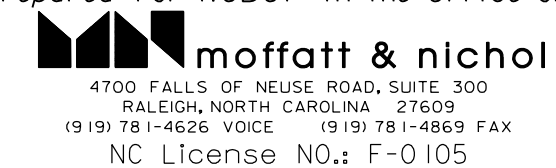
DESIGN DATA

ADT 2023 = 8,525
ADT 2043 = 10,025
K = TBD %
D = TBD %
T = 10 % *
V = 60 MPH
* TTST = 6% DUAL 4%
FUNC CLASS =
PRINCIPAL RURAL ARTERIAL
-REGIONAL TIER

PROJECT LENGTH

LENGTH ROADWAY TIP PROJECT BR-0069 = 0.220
LENGTH STRUCTURE TIP PROJECT BR-0069 = 0.047
TOTAL LENGTH TIP PROJECT BR-0069 = 0.267

Prepared for NCDOT in the Office of:



2024 STANDARD SPECIFICATIONS

RIGHT OF WAY DATE:
MARCH 15, 2023

LETTING DATE:
MAY 28, 2024

TRENT HUFFMAN, P.E.
PROJECT ENGINEER

PAUL JACOB, P.E.
PROJECT STRUCTURAL ENGINEER

DAVID STUTTS, P.E.
NCDOT CONTACT

