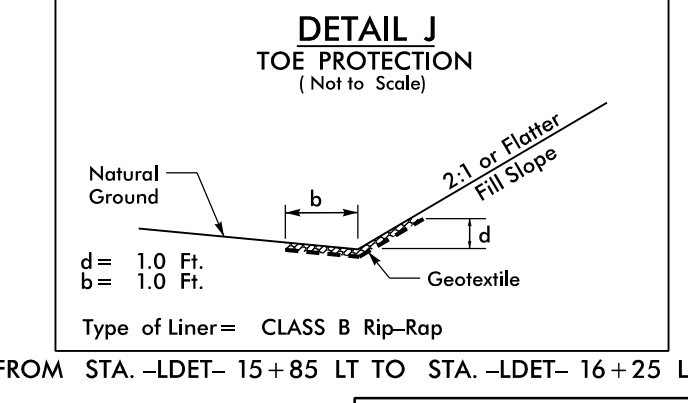
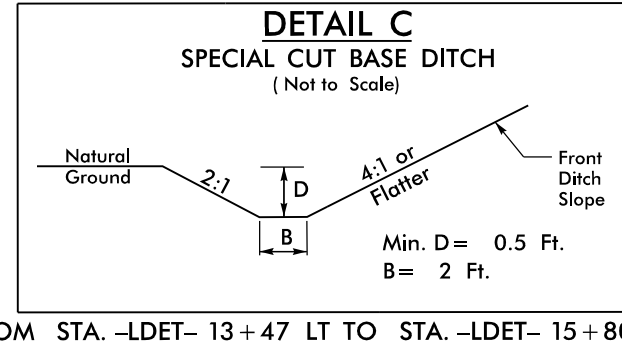
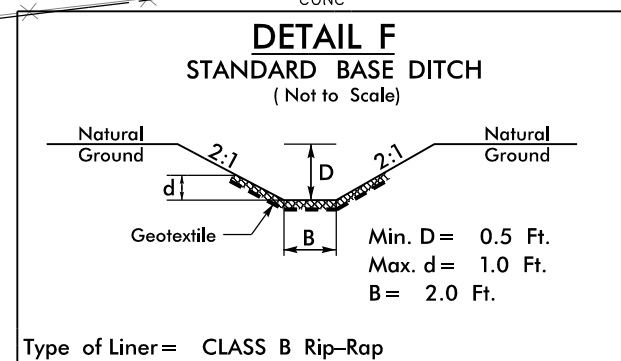
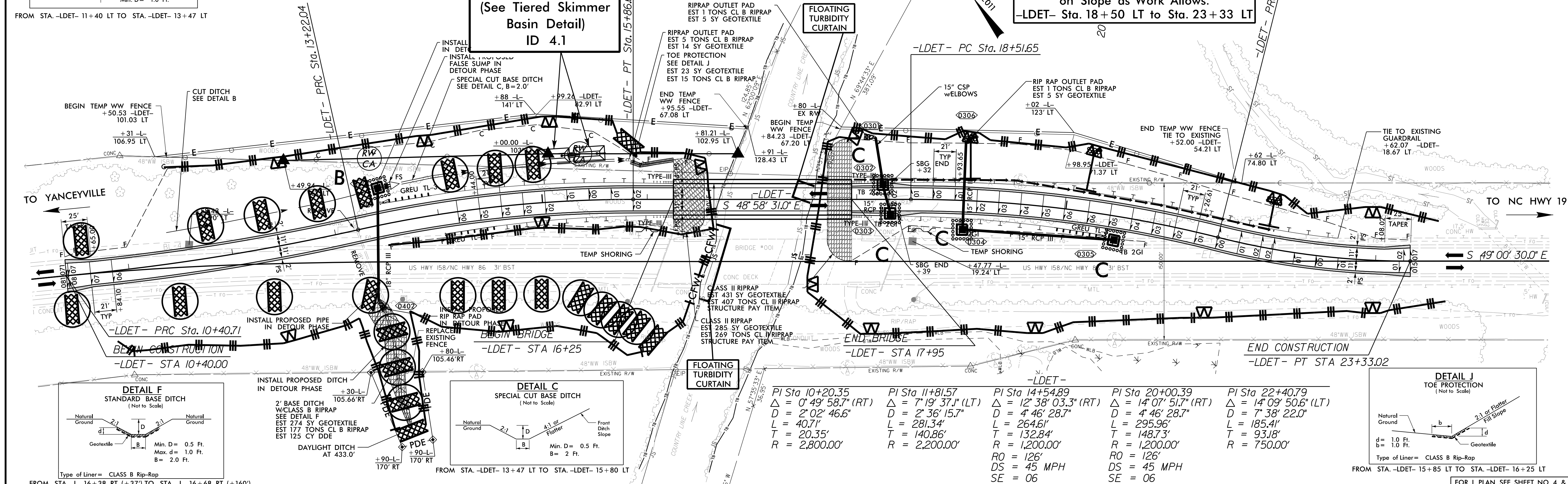


29 x 14 x 3
1.5 inch Skimmer
with 0.625 inch
Orifice Diameter
4 ft. weir
(See Tiered Skimmer
Basin Detail)
ID 4.1

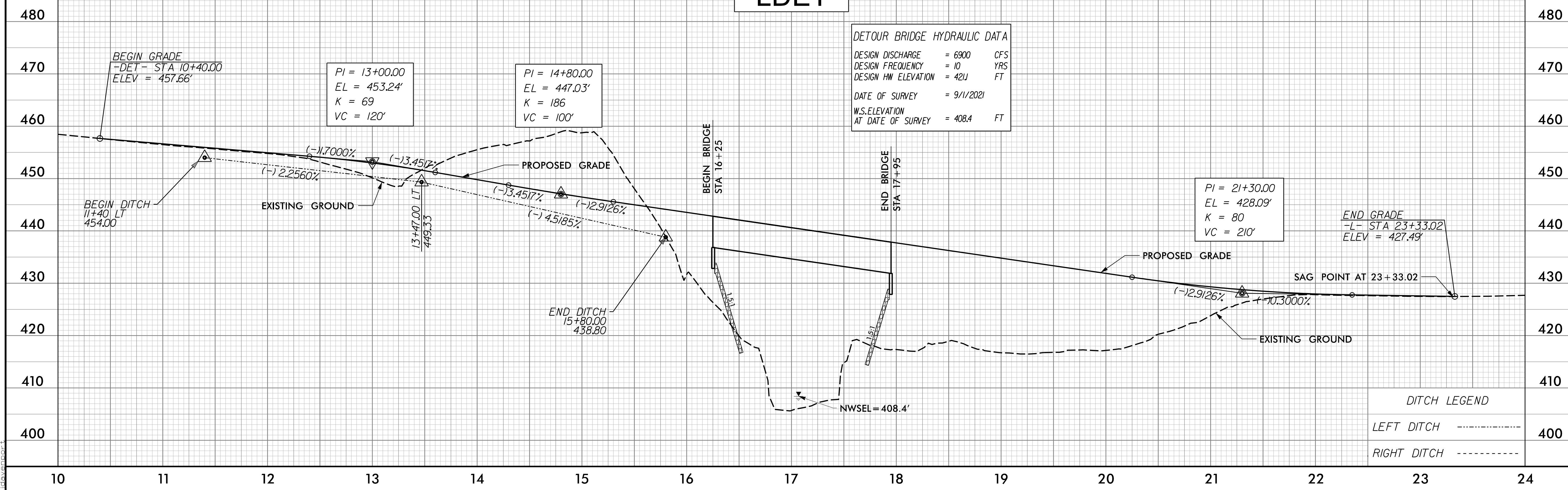
-LDET-

UTILIZE FABRIC INSERT INLET PROTECTION DEVICES IN LIEU OF TEMPORARY ROCK INLET SEDIMENT TRAPS TYPE-C. WHERE PONDING MAY OCCUR ON ROADWAY OPEN TO TRAFFIC.
 Place Matting for Erosion Control on Slope as Work Allows.
 -LDET- Sta. 18+50 LT to Sta. 23+33 LT



PI Sta	Δ	D	L	T	R	RO	DS	SE
10+20.35	0° 49' 58.7" (RT)	2' 02' 46.6"	40.7'	20.35'	2,800.00'	126'	45 MPH	06
11+81.57	7° 19' 37.1" (LT)	2' 36' 15.7"	281.34'	140.86'	2,200.00'	126'	45 MPH	06
14+54.89	12° 38' 03.3" (RT)	4' 46' 28.7"	264.6'	132.84'	1,200.00'	126'	45 MPH	06
20+00.39	14° 07' 51.7" (RT)	4' 46' 28.7"	295.96'	148.73'	1,200.00'	126'	45 MPH	06
22+40.79	14° 09' 50.6" (LT)	7' 38' 22.0"	185.4'	93.18'	750.00'	126'	45 MPH	06

-LDET-



DETOUR BRIDGE HYDRAULIC DATA

DESIGN DISCHARGE	= 6900	CFS
DESIGN FREQUENCY	= 10	YRS
DESIGN HW ELEVATION	= 421	FT
DATE OF SURVEY	= 9/1/2021	
W.S. ELEVATION AT DATE OF SURVEY	= 408.4	FT

DITCH LEGEND

LEFT DITCH	-----
RIGHT DITCH	-----

8.17.19
 1/22/2024
 U:\2024\11-109\BR-0069\Roadside\PSHY\BR-0069_REU_EC05_PSH2B-1.dgn