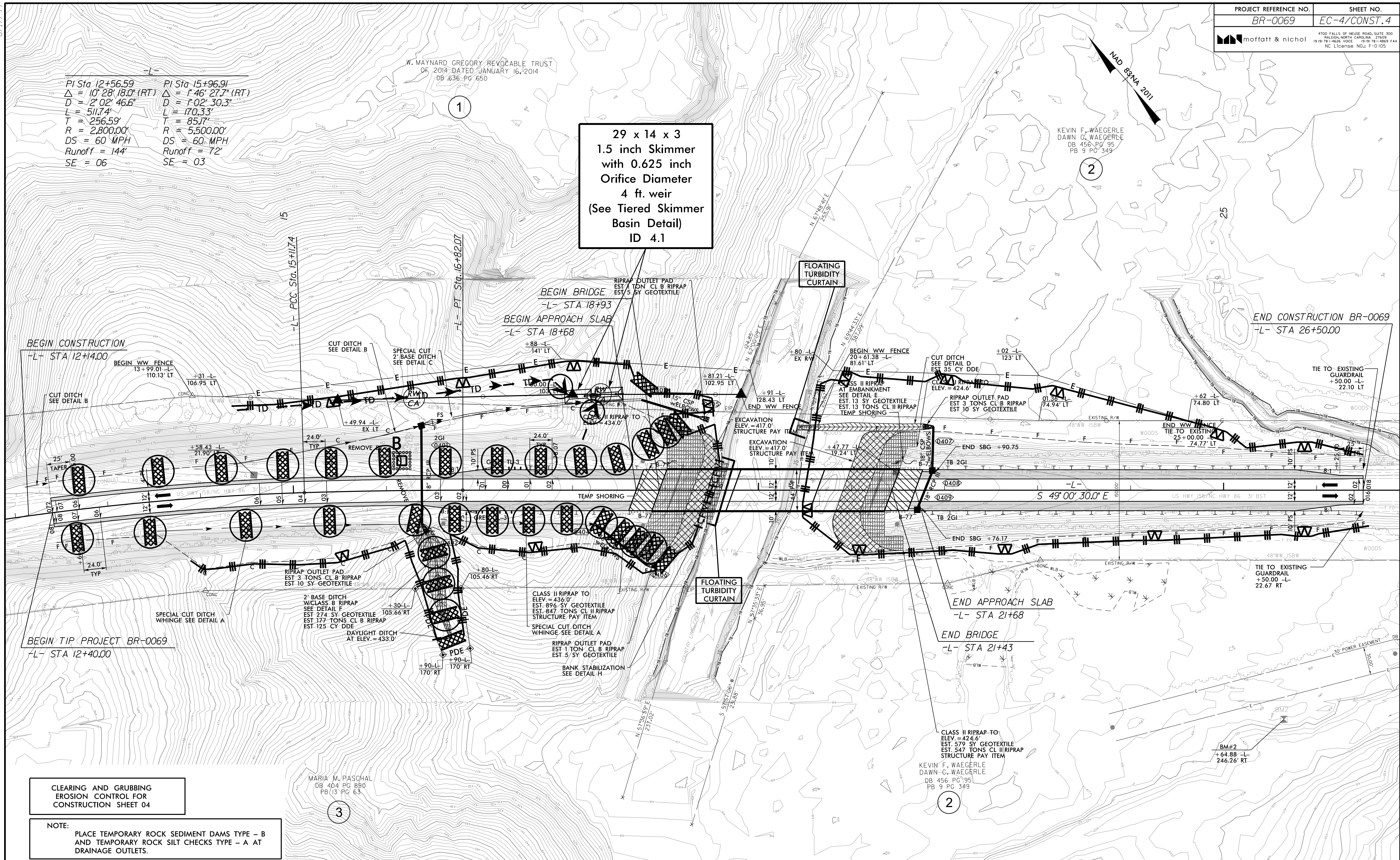


PI Sta 12+56.59 Δ = 10° 28' 18.0" (RT) D = 2' 02' 46.6" L = 511.74' T = 256.59' R = 2,800.00' DS = 60 MPH Runoff = 144' SE = 06	PI Sta 15+96.91 Δ = 1° 46' 27.7" (RT) D = 1' 02' 30.3" L = 170.33' T = 85.17' R = 5,500.00' DS = 60 MPH Runoff = 72' SE = 03
---	--

W. MAYNARD GREGORY REVOCABLE TRUST
OF 2014 DATED JANUARY 16, 2014
DB 636 PG 650

**29 x 14 x 3
1.5 inch Skimmer
with 0.625 inch
Orifice Diameter
4 ft. weir
(See Tiered Skimmer
Basin Detail)
ID 4.1**



CLEARING AND GRUBBING
EROSION CONTROL FOR
CONSTRUCTION SHEET 04

NOTE:
PLACE TEMPORARY ROCK SEDIMENT DAMS TYPE - B
AND TEMPORARY ROCK SILT CHECKS TYPE - A AT
DRAINAGE OUTLETS.

