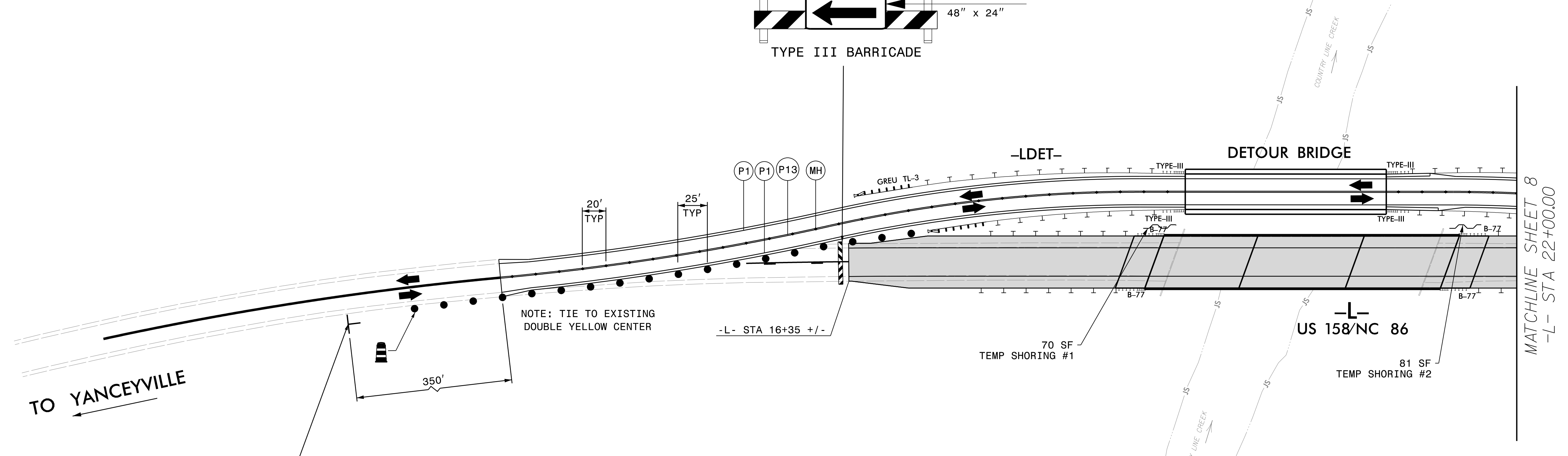
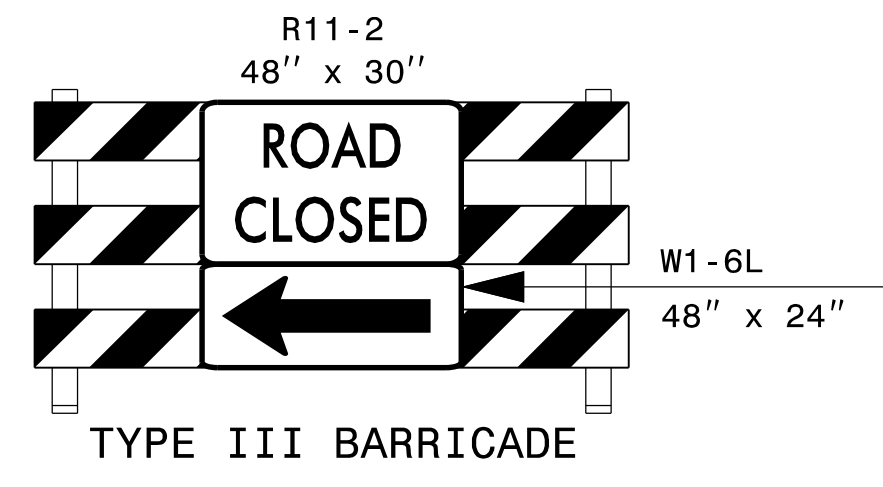
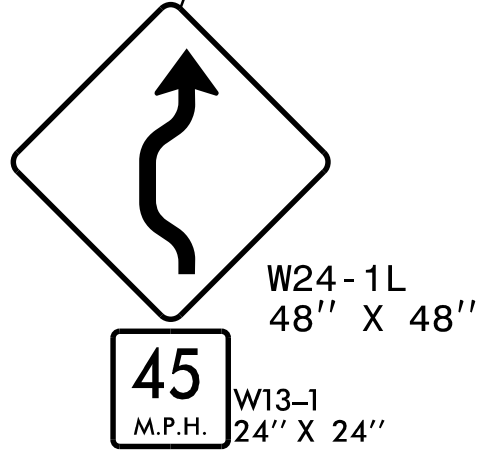


SEE RSD 1101.03 (3 OF 9)
FOR TEMPORARY ROAD CLOSURES



TO YANCEYVILLE



NOTE: TIE TO EXISTING
DOUBLE YELLOW CENTER

-L- STA 16+35 +/-

70 SF
TEMP SHORING #1

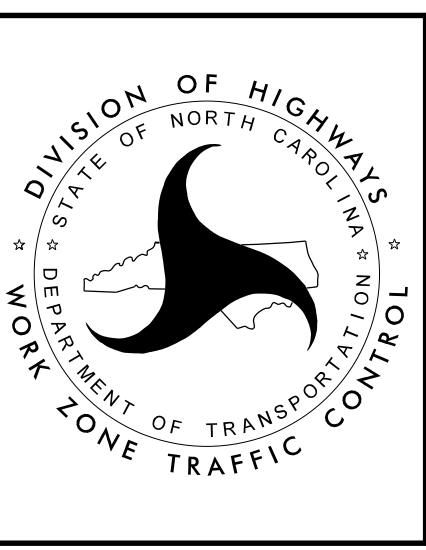
-L-
US 158/NC 86
81 SF
TEMP SHORING #2

MATCHLINE SHEET 8
-L- STA 22+00.00

9/27/2023
 G:\RA\001-109\BR-0069\TrafficControl\TCP\BR0069_tc_tmp_08.dgn
 gmedlin

moffatt & nichol
 4700 FALLS OF NEUSE ROAD, SUITE 300
 RALEIGH, NORTH CAROLINA 27609
 (919) 781-4626 VOICE (919) 781-4869 FAX
 NC License NO.: F-0105

APPROVED: *Trent Huffman*
606614C402404
 DATE: 2/5/2024
 SEAL
**DOCUMENT NOT CONSIDERED FINAL
UNLESS ALL SIGNATURES COMPLETED**



PHASE 2 STEP 1
 -L-