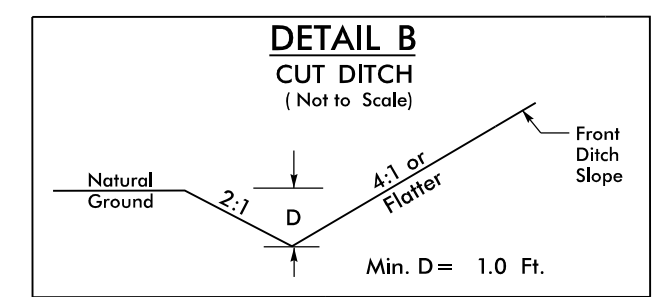


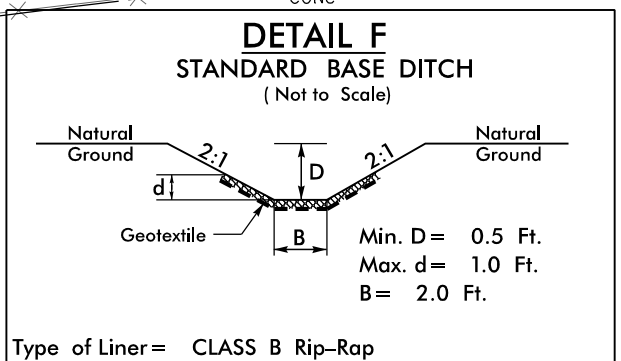
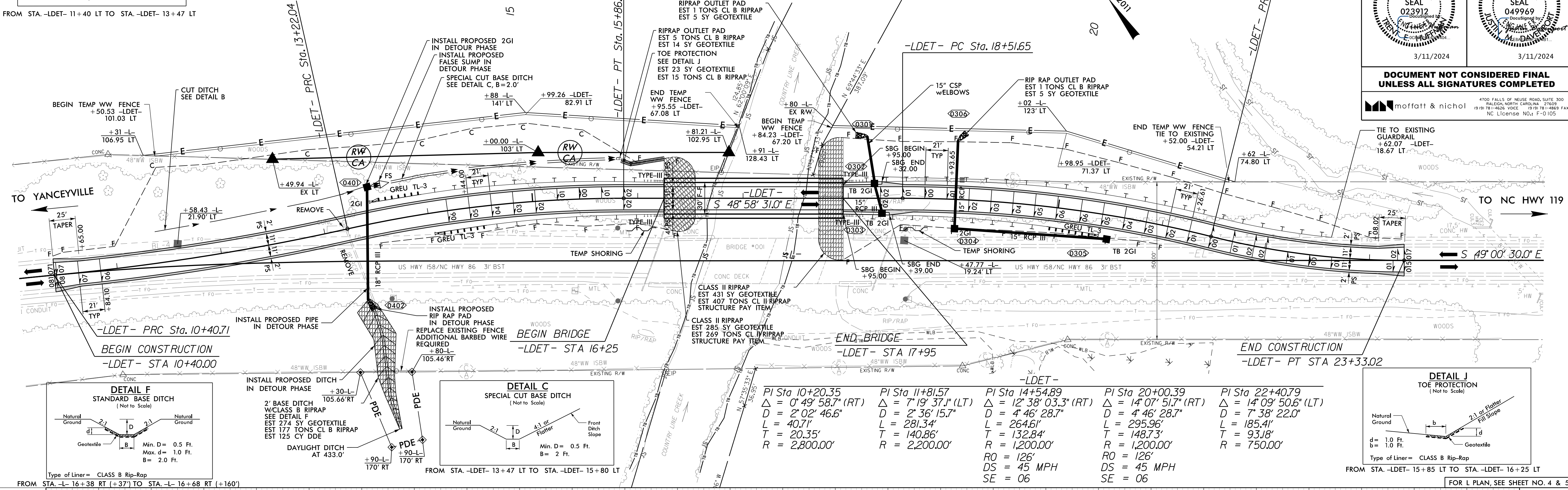
8/17/199



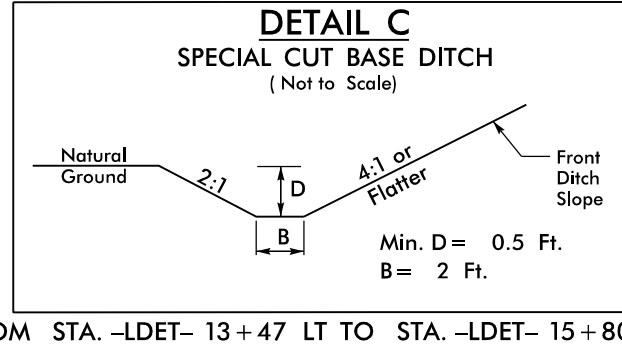
FROM STA. -LDET- 11+40 LT TO STA. -LDET- 13+47 LT

-LDET-

PROJECT REFERENCE NO. BR-0069	SHEET NO. 2B-1
RW SHEET NO.	
ROADWAY DESIGN ENGINEER SEAL 023912 3/11/2024	HYDRAULICS ENGINEER SEAL 049969 3/11/2024
PROJECT NOT CONSIDERED FINAL UNLESS ALL SIGNATURES COMPLETED	
moffatt & nichol 4700 FALLS OF NEUSE ROAD, SUITE 100 RALEIGH, NORTH CAROLINA 27609 (919) 781-4626 VOICE (919) 781-4869 FAX NC License No. F-0105	

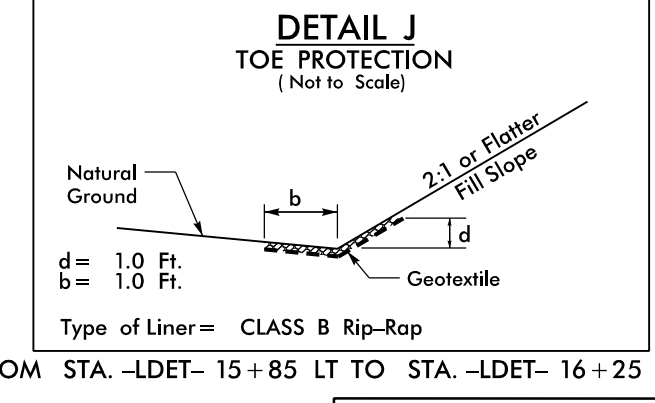


FROM STA. -L- 16+38 RT (+37') TO STA. -L- 16+68 RT (+160')



FROM STA. -LDET- 13+47 LT TO STA. -LDET- 15+80 LT

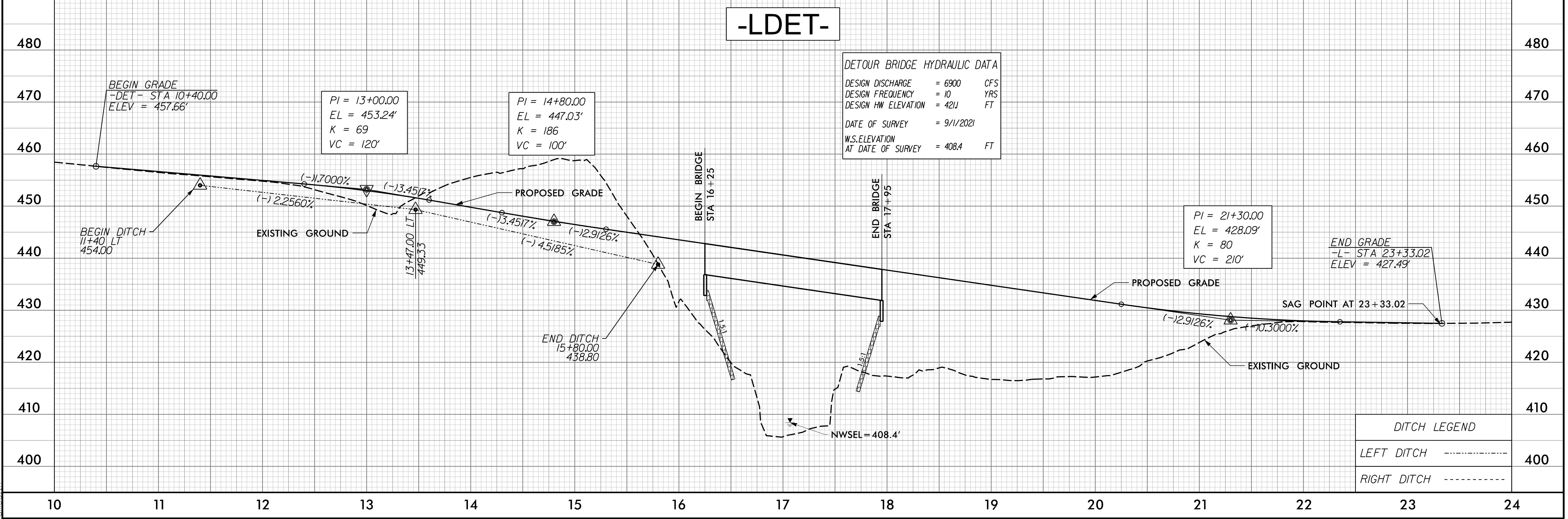
Station	Δ	D	L	T	R	RO	DS	SE
PI Sta 10+20.35	0° 49' 58.7" (RT)	2° 02' 46.6"	40.71'	20.35'	2,800.00'			
PI Sta 11+81.57	7° 19' 37.1" (LT)	2° 36' 15.7"	281.34'	140.86'	2,200.00'			
PI Sta 14+54.89	12° 38' 03.3" (RT)	4° 46' 28.7"	264.61'	132.84'	1,200.00'	126'	45 MPH	06
PI Sta 20+00.39	14° 07' 51.7" (RT)	4° 46' 28.7"	295.96'	148.73'	1,200.00'	126'	45 MPH	06
PI Sta 22+40.79	14° 09' 50.6" (LT)	7° 38' 22.0"	185.41'	93.18'	750.00'			



FROM STA. -LDET- 15+85 LT TO STA. -LDET- 16+25 LT

FOR L PLAN, SEE SHEET NO. 4 & 5

-LDET-



DESIGN DISCHARGE	= 6900	CFS
DESIGN FREQUENCY	= 10	YRS
DESIGN HW ELEVATION	= 42U	FT
DATE OF SURVEY	= 9/1/2021	
W.S.ELEVATION AT DATE OF SURVEY	= 408.4	FT

LEFT DITCH	-----	400
RIGHT DITCH	-----	

2/28/2024 8:58:10 AM \\10011-1091\BR-0069\Roadway\Proj\BR-0069_rdu_PSH2B-1.dgn