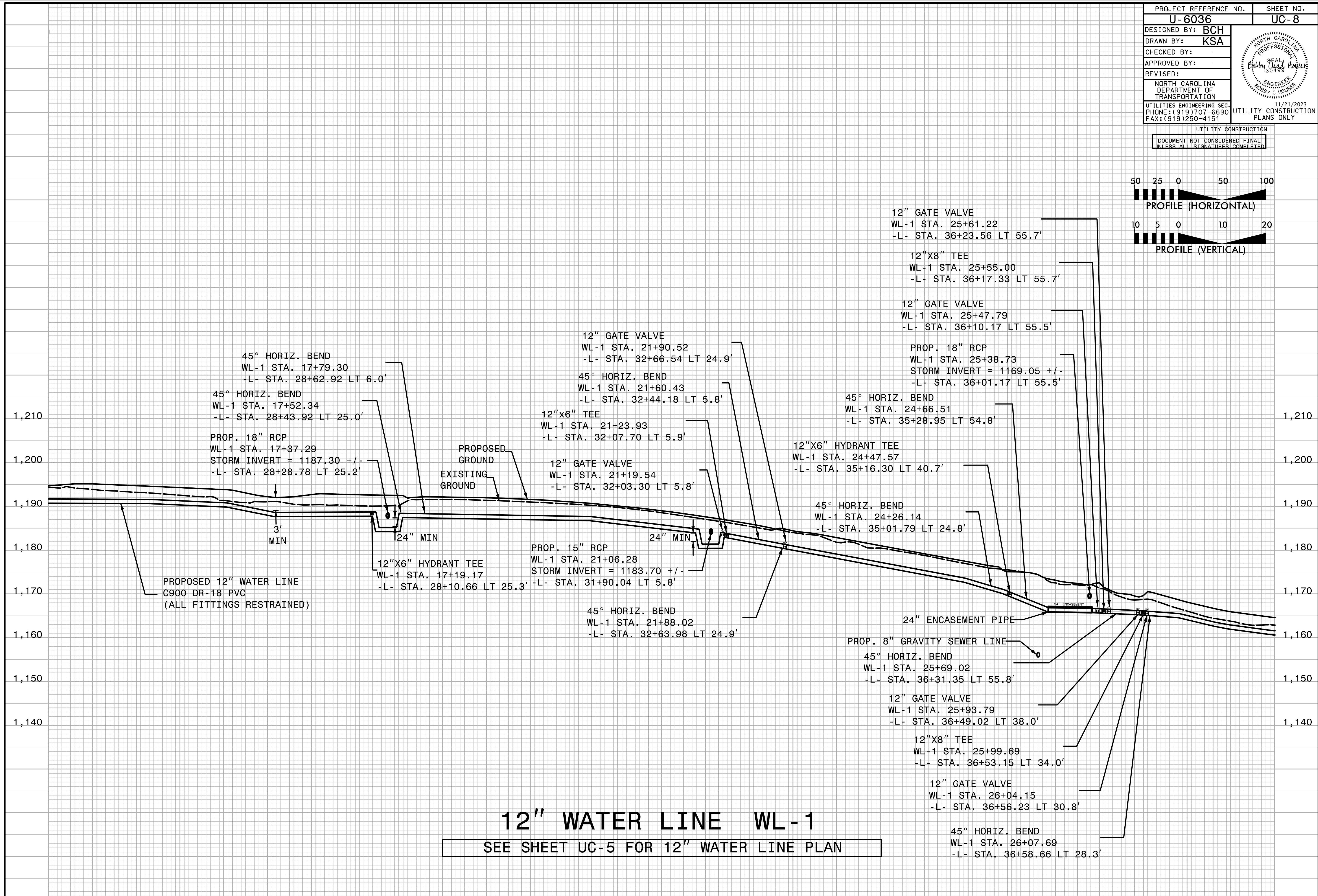
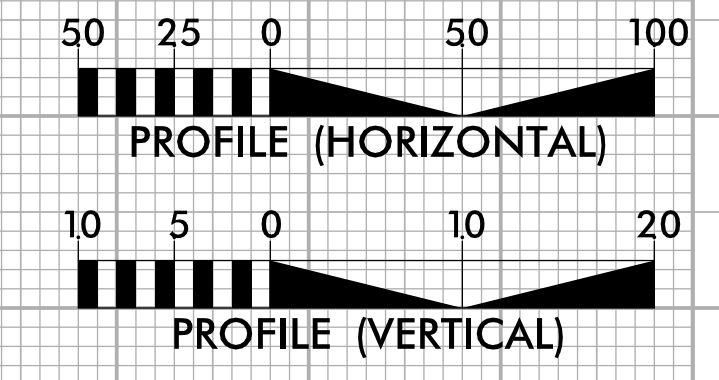


PROJECT REFERENCE NO. U-6036	SHEET NO. UC-8
DESIGNED BY: BCH	
DRAWN BY: KSA	
CHECKED BY:	
APPROVED BY:	
REVISED:	
NORTH CAROLINA DEPARTMENT OF TRANSPORTATION	
UTILITIES ENGINEERING SEC. PHONE: (919) 707-6690 FAX: (919) 250-4151	12/21/2023 UTILITY CONSTRUCTION PLANS ONLY

UTILITY CONSTRUCTION
 DOCUMENT NOT CONSIDERED FINAL
 UNLESS ALL SIGNATURES COMPLETED



45° HORIZ. BEND
 WL-1 STA. 17+79.30
 -L- STA. 28+62.92 LT 6.0'

45° HORIZ. BEND
 WL-1 STA. 17+52.34
 -L- STA. 28+43.92 LT 25.0'

PROP. 18" RCP
 WL-1 STA. 17+37.29
 STORM INVERT = 1187.30 +/-
 -L- STA. 28+28.78 LT 25.2'

PROPOSED GROUND
 EXISTING GROUND

12" X 6" HYDRANT TEE
 WL-1 STA. 17+19.17
 -L- STA. 28+10.66 LT 25.3'

PROP. 15" RCP
 WL-1 STA. 21+06.28
 STORM INVERT = 1183.70 +/-
 -L- STA. 31+90.04 LT 5.8'

12" GATE VALVE
 WL-1 STA. 21+90.52
 -L- STA. 32+66.54 LT 24.9'

45° HORIZ. BEND
 WL-1 STA. 21+60.43
 -L- STA. 32+44.18 LT 5.8'

12" X 6" TEE
 WL-1 STA. 21+23.93
 -L- STA. 32+07.70 LT 5.9'

12" GATE VALVE
 WL-1 STA. 21+19.54
 -L- STA. 32+03.30 LT 5.8'

45° HORIZ. BEND
 WL-1 STA. 21+88.02
 -L- STA. 32+63.98 LT 24.9'

12" GATE VALVE
 WL-1 STA. 25+61.22
 -L- STA. 36+23.56 LT 55.7'

12" X 8" TEE
 WL-1 STA. 25+55.00
 -L- STA. 36+17.33 LT 55.7'

12" GATE VALVE
 WL-1 STA. 25+47.79
 -L- STA. 36+10.17 LT 55.5'

PROP. 18" RCP
 WL-1 STA. 25+38.73
 STORM INVERT = 1169.05 +/-
 -L- STA. 36+01.17 LT 55.5'

45° HORIZ. BEND
 WL-1 STA. 24+66.51
 -L- STA. 35+28.95 LT 54.8'

12" X 6" HYDRANT TEE
 WL-1 STA. 24+47.57
 -L- STA. 35+16.30 LT 40.7'

45° HORIZ. BEND
 WL-1 STA. 24+26.14
 -L- STA. 35+01.79 LT 24.8'

24" ENCASEMENT PIPE

PROP. 8" GRAVITY SEWER LINE

45° HORIZ. BEND
 WL-1 STA. 25+69.02
 -L- STA. 36+31.35 LT 55.8'

12" GATE VALVE
 WL-1 STA. 25+93.79
 -L- STA. 36+49.02 LT 38.0'

12" X 8" TEE
 WL-1 STA. 25+99.69
 -L- STA. 36+53.15 LT 34.0'

12" GATE VALVE
 WL-1 STA. 26+04.15
 -L- STA. 36+56.23 LT 30.8'

45° HORIZ. BEND
 WL-1 STA. 26+07.69
 -L- STA. 36+58.66 LT 28.3'

12" WATER LINE WL-1
 SEE SHEET UC-5 FOR 12" WATER LINE PLAN

13+50 14+00 14+50 15+00 15+50 16+00 16+50 17+00 17+50 18+00 18+50 19+00 19+50 20+00 20+50 21+00 21+50 22+00 22+50 23+00 23+50 24+00 24+50 25+00 25+50 26+00 26+50 27+00 27+50