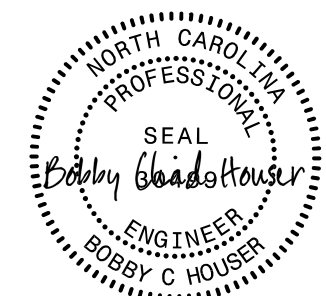
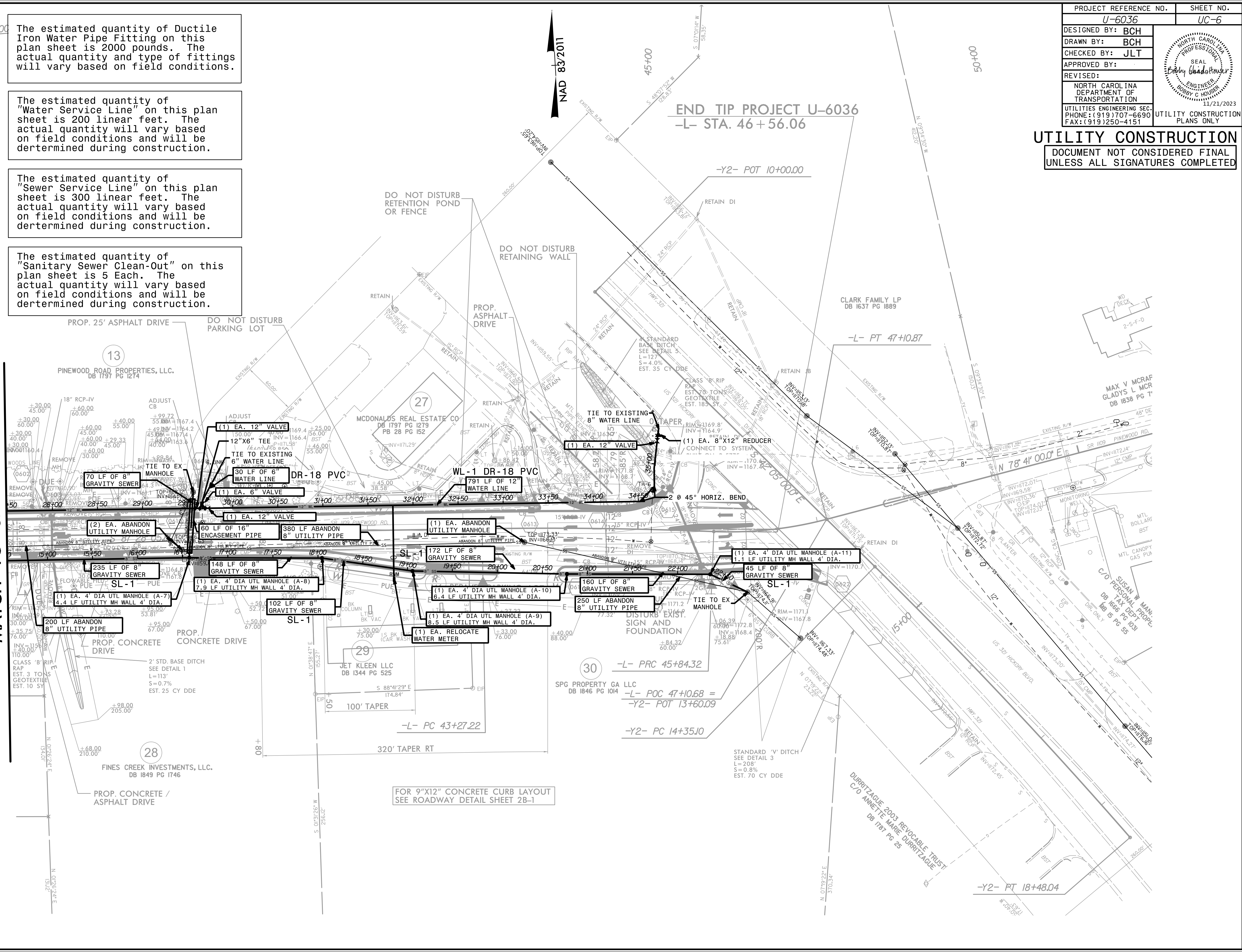


PROJECT REFERENCE NO.	SHEET NO.
U-6036	UC-6
DESIGNED BY: BCH	
DRAWN BY: BCH	
CHECKED BY: JLT	
APPROVED BY:	
REVISED:	
NORTH CAROLINA DEPARTMENT OF TRANSPORTATION 11/21/2023 UTILITIES ENGINEERING SEC. PHONE: (919) 707-6690 FAX: (919) 250-4151	
UTILITY CONSTRUCTION PLANS ONLY	

UTILITY CONSTRUCTION
 DOCUMENT NOT CONSIDERED FINAL
 UNLESS ALL SIGNATURES COMPLETED

- The estimated quantity of Ductile Iron Water Pipe Fitting on this plan sheet is 2000 pounds. The actual quantity and type of fittings will vary based on field conditions.
- The estimated quantity of "Water Service Line" on this plan sheet is 200 linear feet. The actual quantity will vary based on field conditions and will be determined during construction.
- The estimated quantity of "Sewer Service Line" on this plan sheet is 300 linear feet. The actual quantity will vary based on field conditions and will be determined during construction.
- The estimated quantity of "Sanitary Sewer Clean-Out" on this plan sheet is 5 Each. The actual quantity will vary based on field conditions and will be determined during construction.

MATCH TO SHEET UC-5



FOR 9"X12" CONCRETE CURB LAYOUT
 SEE ROADWAY DETAIL SHEET 2B-1