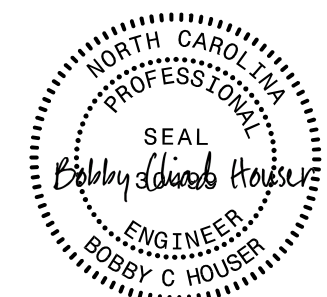


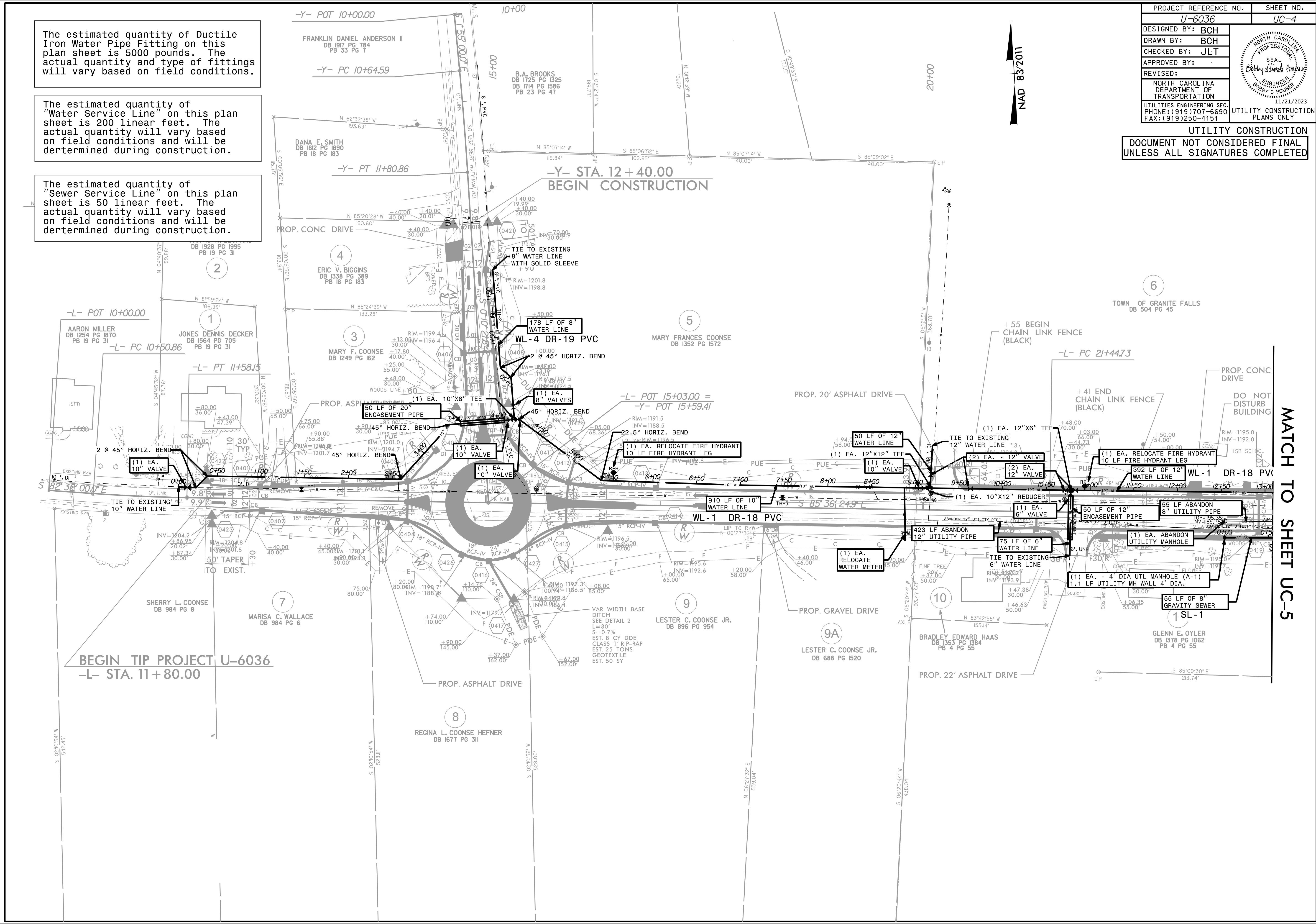
The estimated quantity of Ductile Iron Water Pipe Fitting on this plan sheet is 5000 pounds. The actual quantity and type of fittings will vary based on field conditions.

The estimated quantity of "Water Service Line" on this plan sheet is 200 linear feet. The actual quantity will vary based on field conditions and will be determined during construction.

The estimated quantity of "Sewer Service Line" on this plan sheet is 50 linear feet. The actual quantity will vary based on field conditions and will be determined during construction.

PROJECT REFERENCE NO.	SHEET NO.
U-6036	UC-4
DESIGNED BY: BCH	
DRAWN BY: BCH	
CHECKED BY: JLT	
APPROVED BY:	
REVISED:	
NORTH CAROLINA DEPARTMENT OF TRANSPORTATION	UTILITY CONSTRUCTION PLANS ONLY
UTILITIES ENGINEERING SEC. PHONE: (919) 707-6690 FAX: (919) 250-4151	

UTILITY CONSTRUCTION DOCUMENT NOT CONSIDERED FINAL UNLESS ALL SIGNATURES COMPLETED



MATCH TO SHEET UC-5