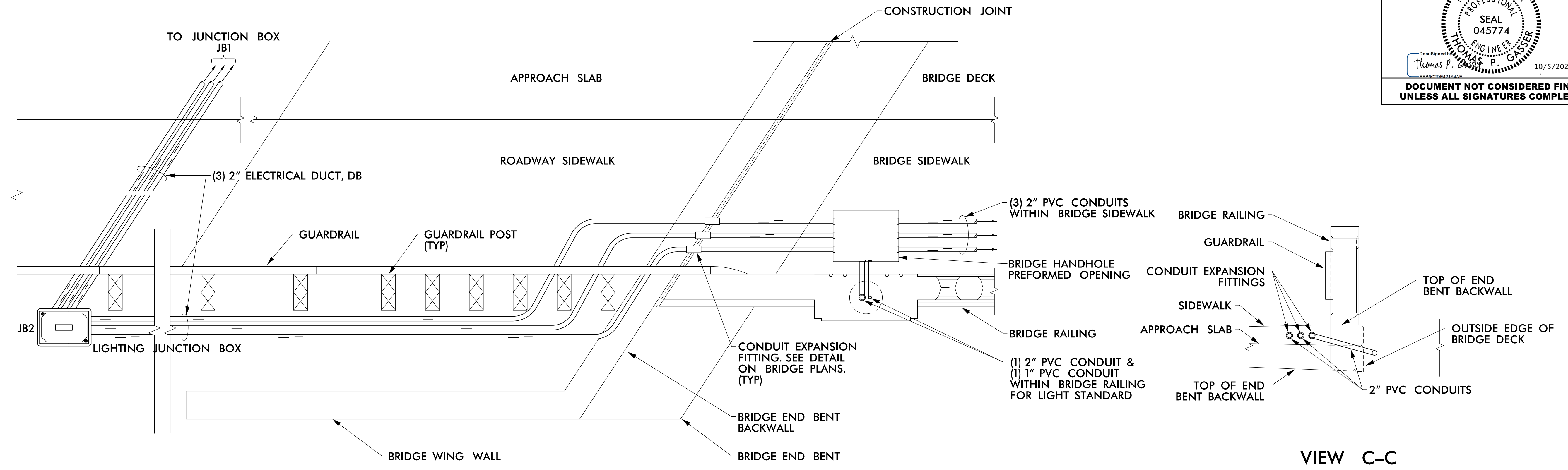


5/14/23

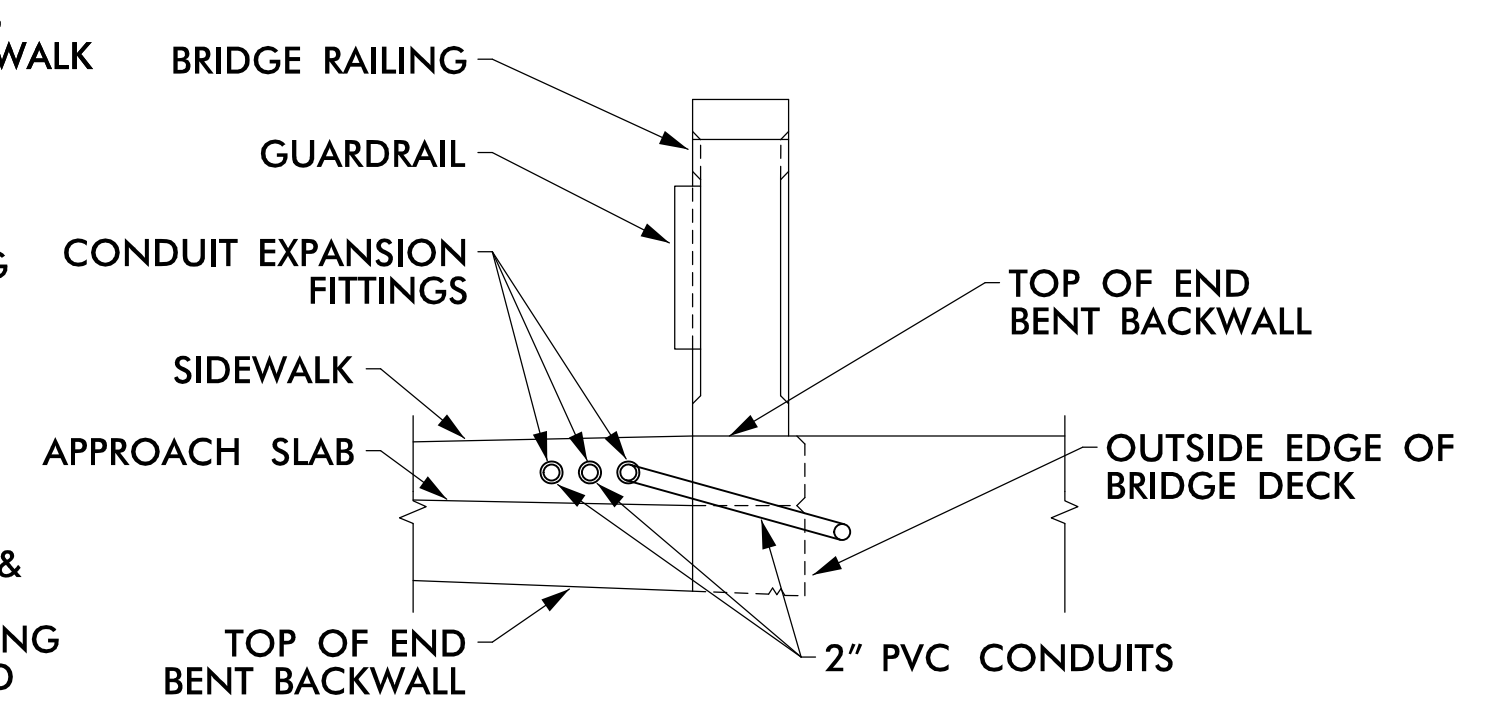
PROJECT REFERENCE NO.	SHEET NO.
B-4654	L2

THOMAS P. GASSER
PROFESSIONAL ENGINEER
SEAL 045774
NORTH CAROLINA
10/5/2023

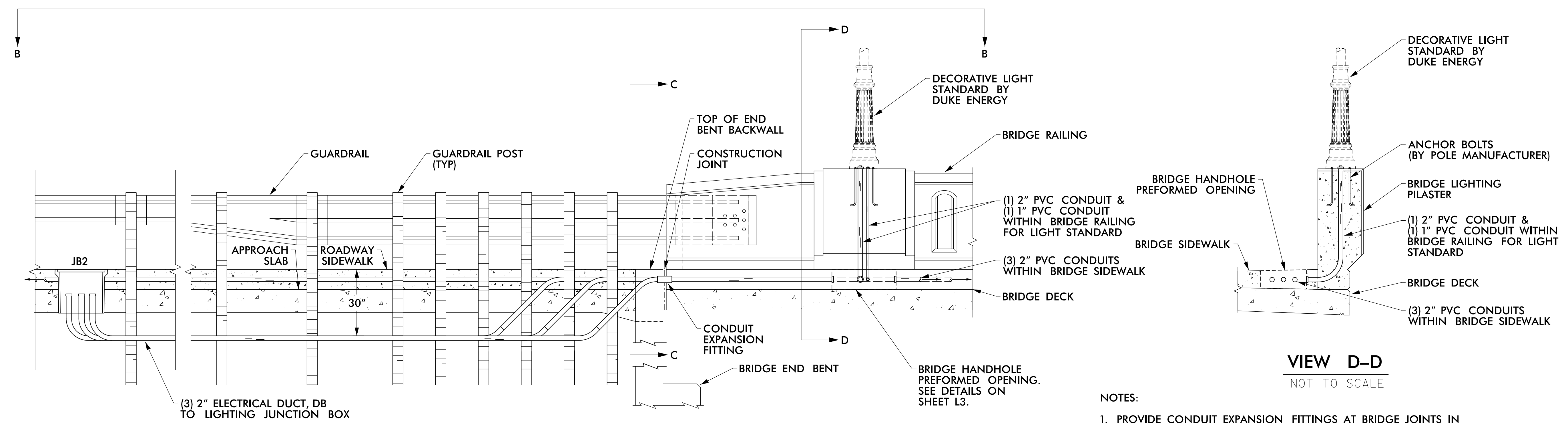
**DOCUMENT NOT CONSIDERED FINAL
UNLESS ALL SIGNATURES COMPLETED**



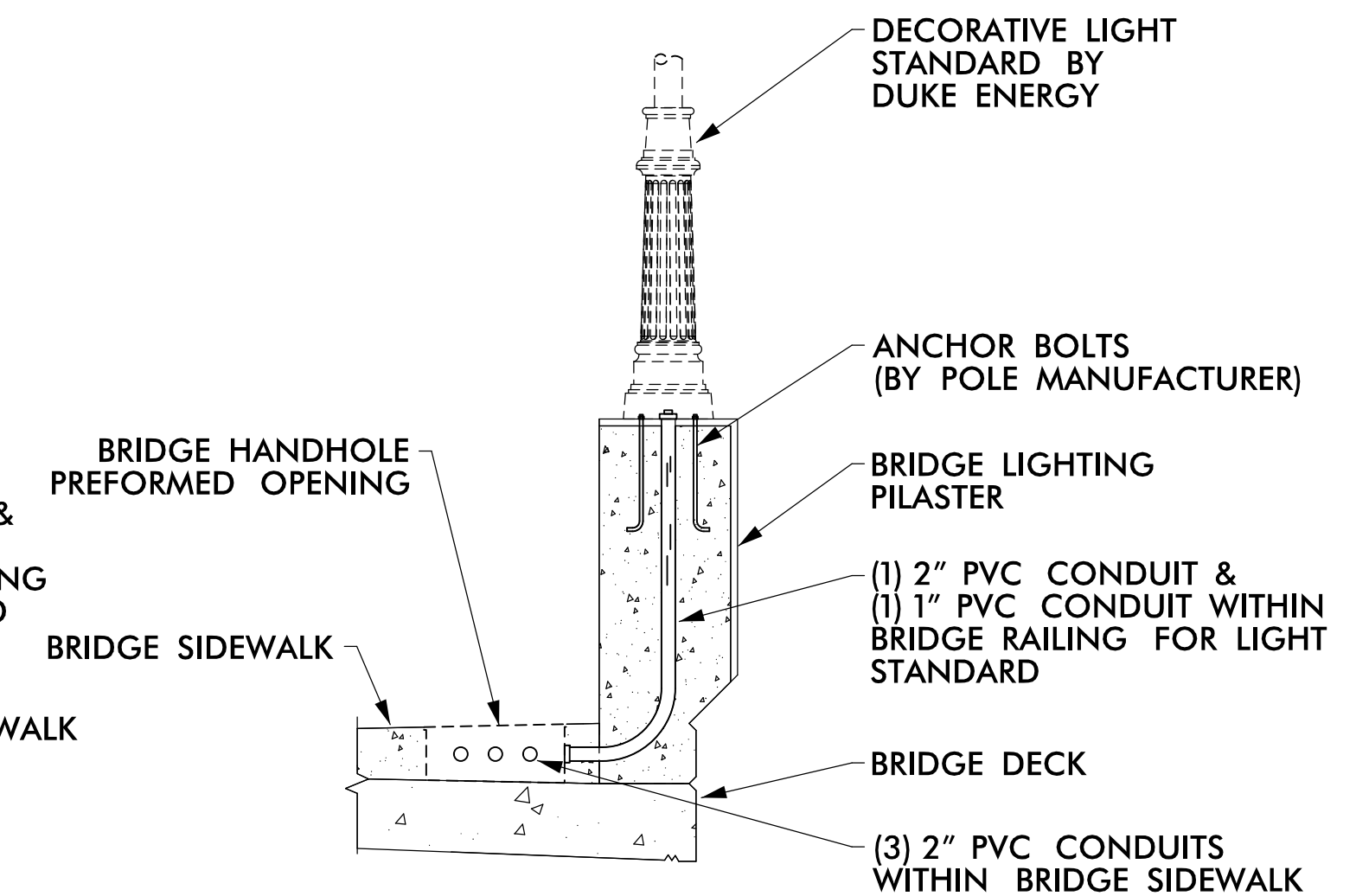
VIEW B-B
NOT TO SCALE



VIEW C-C
NOT TO SCALE



VIEW A-A
NOT TO SCALE

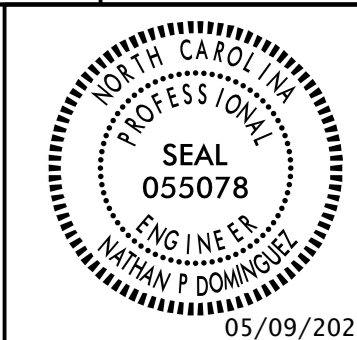


VIEW D-D
NOT TO SCALE

- NOTES:**
1. PROVIDE CONDUIT EXPANSION FITTINGS AT BRIDGE JOINTS IN SIDEWALK AS REQUIRED.
 2. COORDINATE INSTALLATION OF LIGHTING CONDUITS, EXPANSION FITTINGS, CABLING, AND LIGHT STANDARD ANCHOR BOLTS WITH BRIDGE PLANS.
 3. CONDUIT, EXPANSION FITTINGS, AND PREFORMED JUNCTION BOXES INSTALLED WITHIN THE BRIDGE SIDEWALK AND BARRIER RAILING INCLUDED WITH COST OF BRIDGE CONSTRUCTION AND WILL NOT BE PAID FOR SEPARATELY.

Projects\60435\B-4654-4654-1\Lighting\B4654-1.tg_psh02.dgn

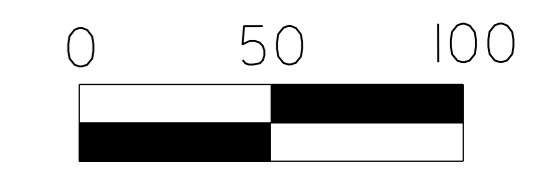
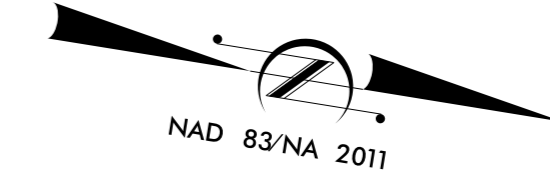
USE FOR CONDUIT INSTALLATION ONLY



DOCUMENT NOT CONSIDERED FINAL UNLESS ALL SIGNATURES COMPLETED

LEGEND

- 2" ELECTRICAL DUCT
- STUB UP LOCATION
- ⊗ EXISTING DUKE ENERGY SERVICE POLE



PROJECT NOTES

1. BURY CONDUIT AT A MINIMUM DEPTH OF 36".
2. INSTALL CONTINUOUS RUN OF CONDUIT BETWEEN POINTS AND STUB UP CONDUIT AT EACH LOCATION AS IDENTIFIED.
3. TAPE ENDS OF CONDUIT AT ALL STUB UP LOCATIONS
4. OFFSET CONDUIT IN MEDIAN A MINIMUM OF 1' FROM CENTER OF DITCH.
5. LIGHT POLES AND CONDUCTOR TO BE INSTALLED BY OTHERS AND ARE NOT PART OF THIS PROJECT.
6. INSTALL CONDUIT IN AS STRAIGHT OF A RUN AS POSSIBLE BETWEEN STUB UP LOCATIONS.
7. OFFSET DIRECTIONALLY DRILLED CONDUIT BETWEEN LOCATIONS 7 AND 8 TO ENSURE THE PROPOSED RETAINING WALL FOOTING IS NOT IN CONFLICT.

ESTIMATED BILL OF MATERIALS

UNIT	ITEM	QTY
LF	ELECTRICAL DUCT, TYPE BD, SIZE 2"	2,850
LF	ELECTRICAL DUCT, TYPE JA, SIZE 2"	350

NC 50 (BENSON ROAD)

TABLE A

STUB UP LOCATION	STATION & OFFSET
LOC. 1	-RPC- STA. 13+96, 31' RT
LOC. 2	-RPC- STA. 12+15, 34' RT
LOC. 3	-L- STA. 20+91, 37' LT
LOC. 4	-RPD- STA. 12+34, 14' RT
LOC. 5	-RPD- STA. 10+97, 21' RT
LOC. 6	-Y1- STA. 30+89, 64' RT
LOC. 7	-Y1- STA. 33+34, 62' RT
LOC. 8	-Y1- STA. 26+31, 60' RT
LOC. 9	-Y1- STA. 24+32, 58' RT
LOC. 10	LOCATION REMOVED.
LOC. 11	-Y1- STA. 21+64, 62' LT
LOC. 12	-Y1- STA. 23+63, 69' LT
LOC. 13	-Y1- STA. 25+86, 1' OFFSET FROM DITCH
LOC. 14	-Y1- STA. 27+79, BETWEEN GUARDRAIL
LOC. 15	-Y1- STA. 29+79, 1' OFFSET FROM DITCH
LOC. 16	-Y1- STA. 30+99, 57' LT
LOC. 17	-LPB- STA. 10+35, 32' RT
LOC. 18	-LPB- STA. 11+56, 32' RT
LOC. 19	-LPB- STA. 13+52, 35' RT
LOC. 20	-RPB- STA. 14+85, 38' LT
LOC. 21	-RPB- STA. 13+44, 27' LT
LOC. 22	-RPB- STA. 11+94, 28' LT
LOC. 23	-RPB- STA. 10+37, 30' LT

2			
1			
Rev.	Date	Description	Approved
NORTH CAROLINA DEPARTMENT OF TRANSPORTATION ROADWAY DESIGN LIGHTING/ELECTRICAL SECTION CONDUIT LAYOUT CONDUIT LOCATIONS FOR FUTURE DUKE ENERGY LIGHTING WAKE COUNTY			
Drawn By:	RGH	Approved By:	Dwg No.:

08-MAY-2023 11:31
 R:\Lighting\Lighting Design\B-4654 90 Percent Files\Roadway\B4654_rdy_1e.dsn.dgn
 rgh@1 AT RD 328781L

