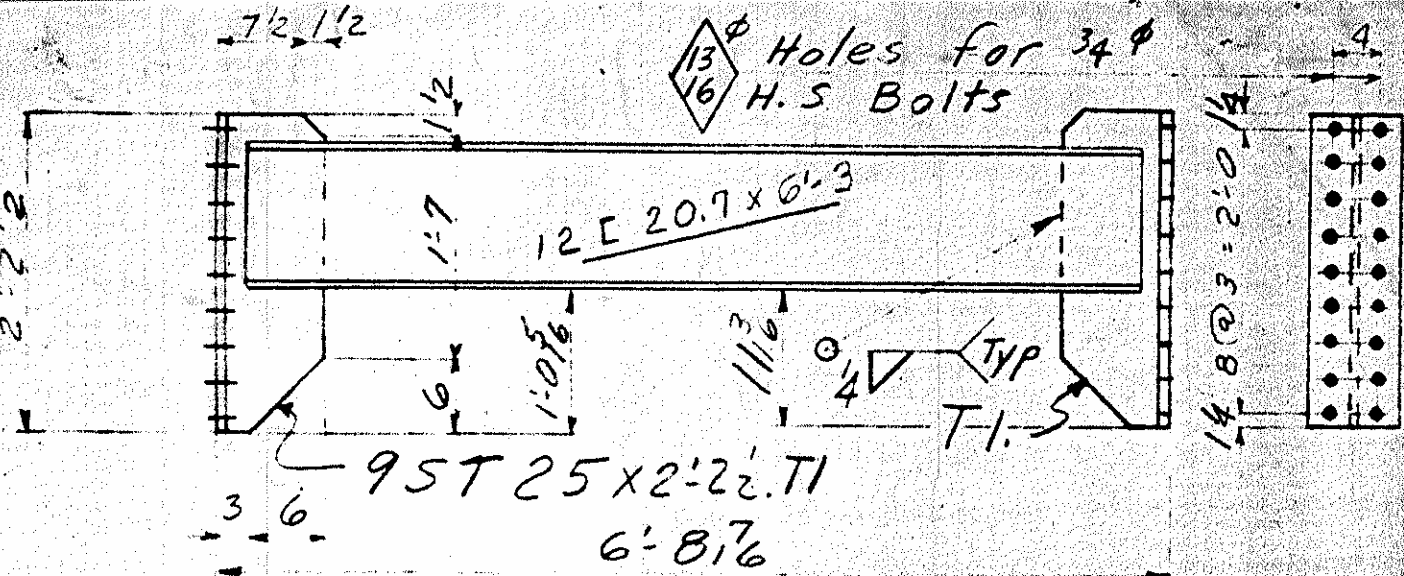
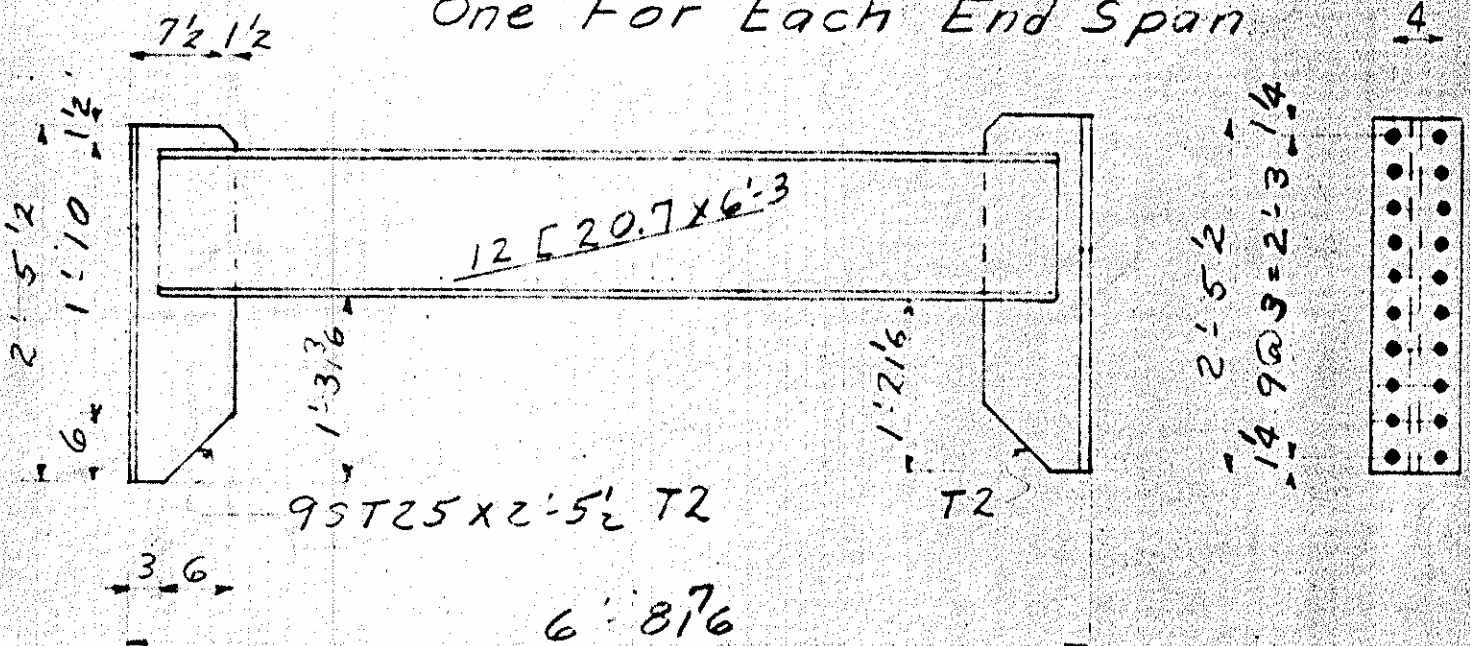


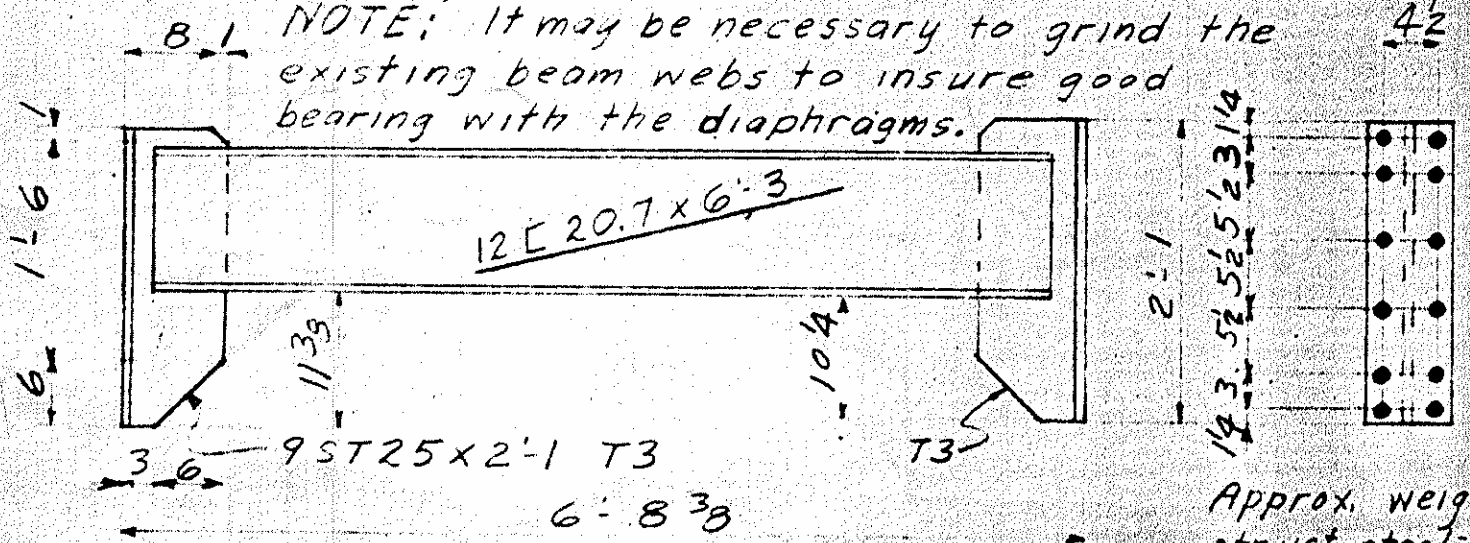
8.1 4829



DIAPHRAGM D-1 2 REQ'D
One For Each End Span

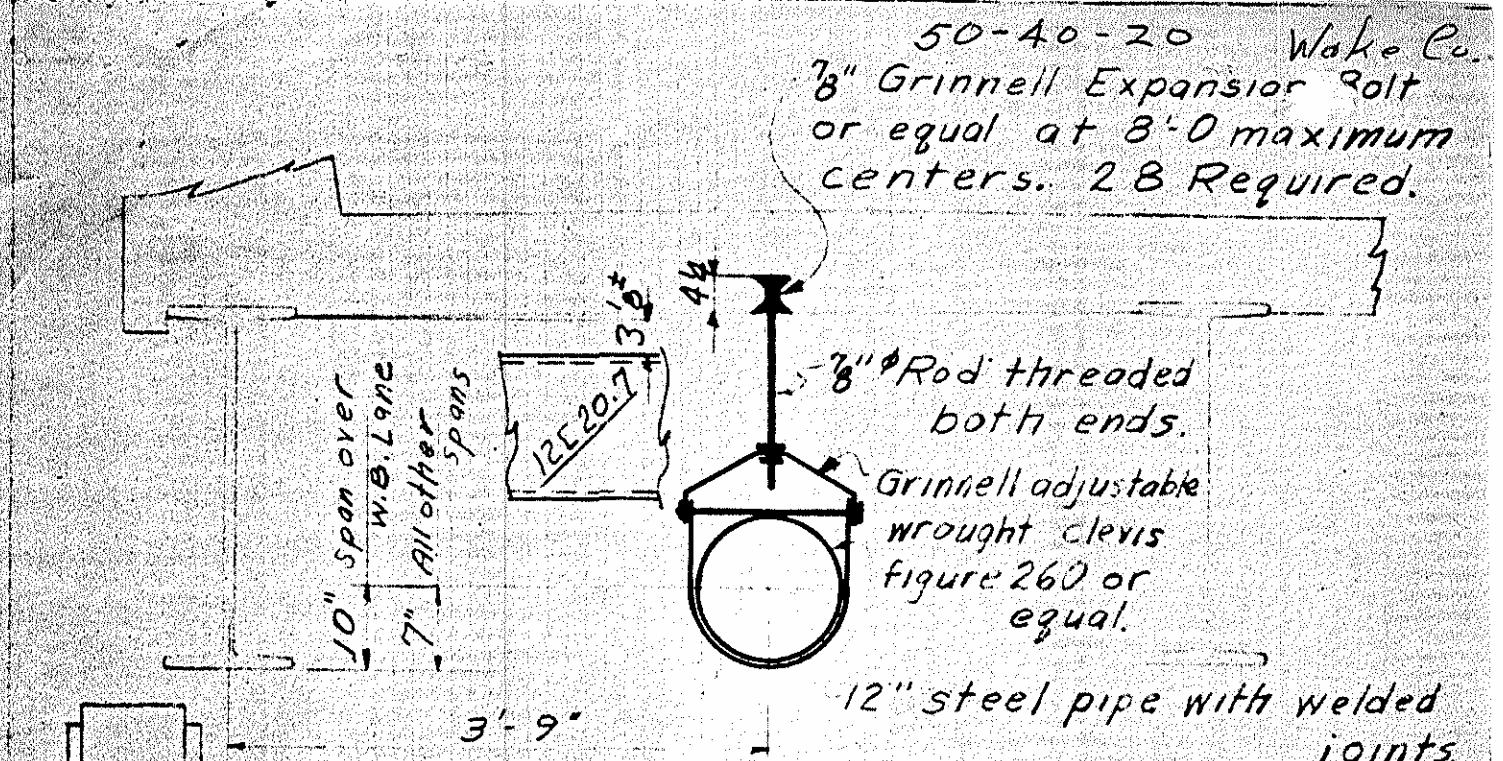


DIAPHRAGM D-2 2 REQ'D
For Span Over West-Bound Lane



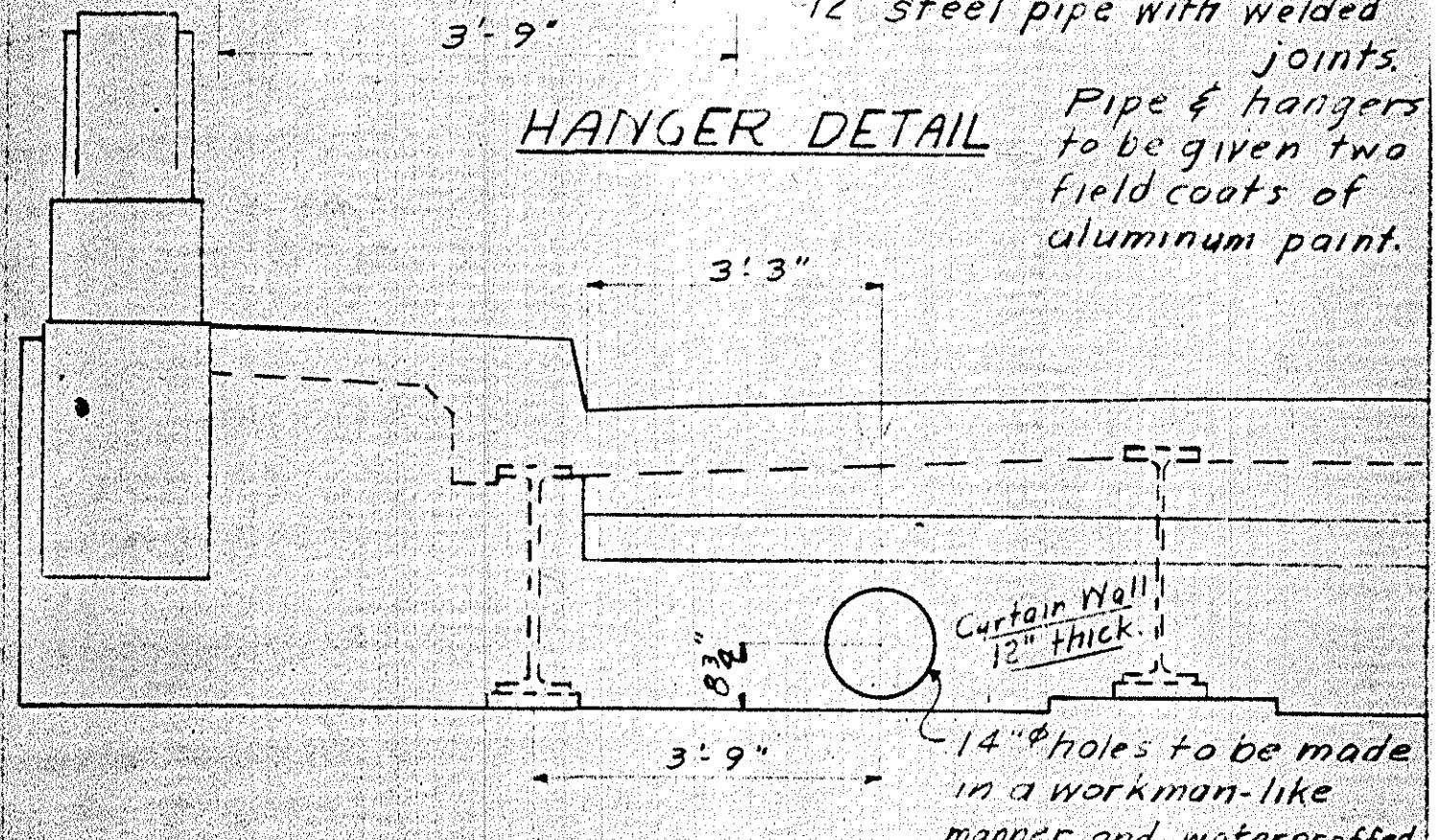
DIAPHRAGM D-3 2 REQ'D
For Span Over East-Bound Lane

Approx. weight of
struct. steel = 1950
Req'd no. of 3/4
H.S. bolts = 270



HANGER DETAIL

Pipe & hangers
to be given two
field coats of
aluminum paint.



END VIEW OF NORTH END
SOUTH END OPPOSITE HAND

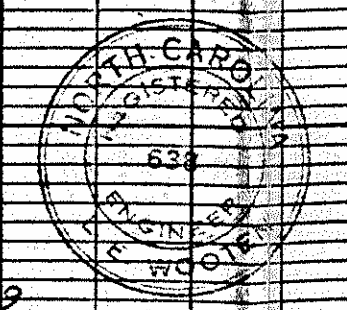
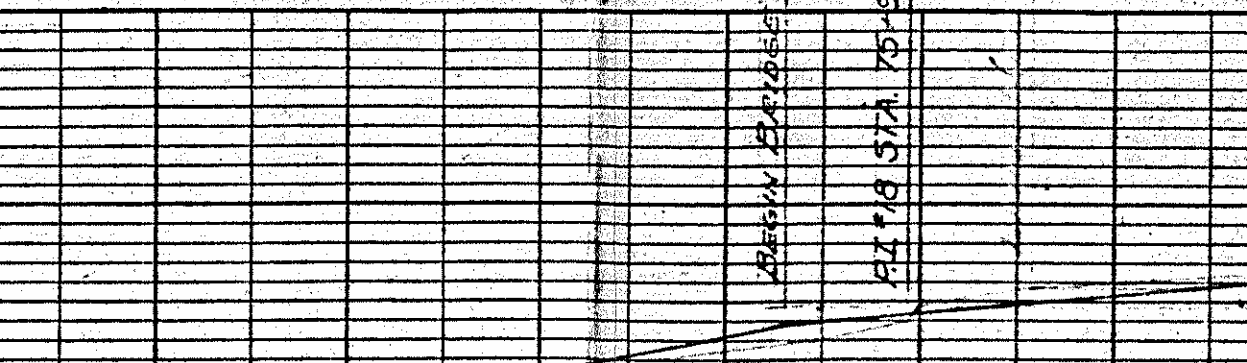
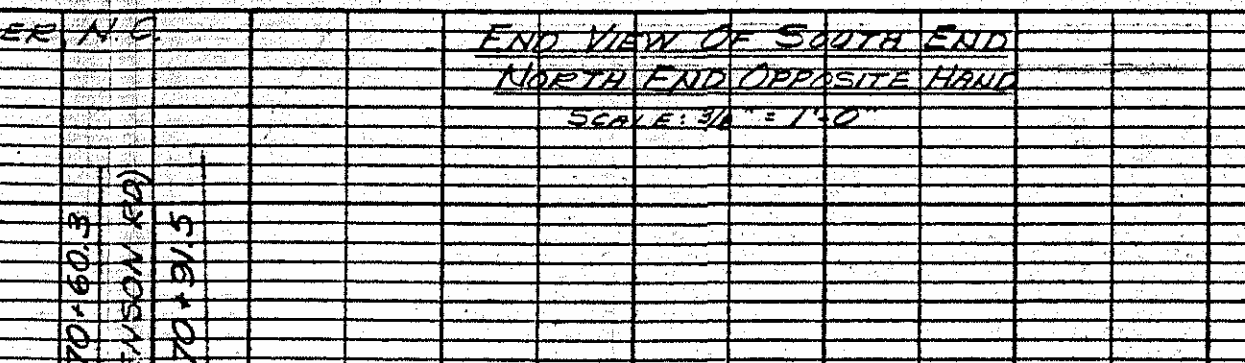
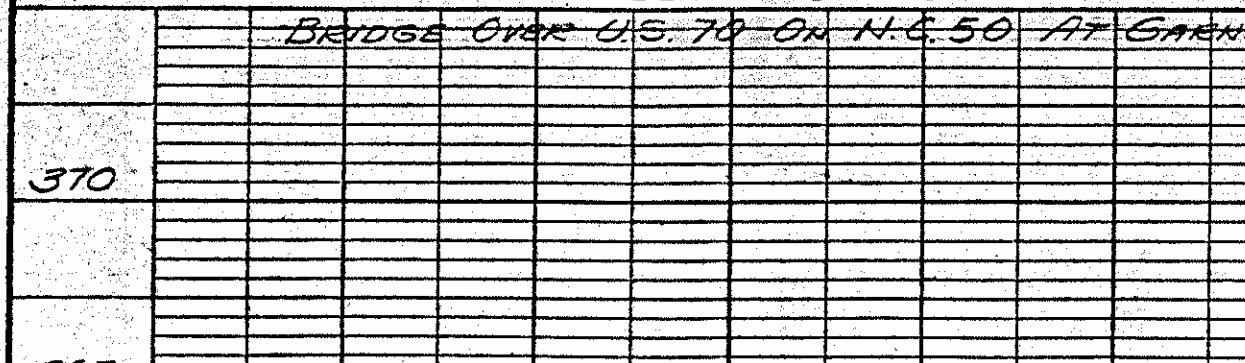
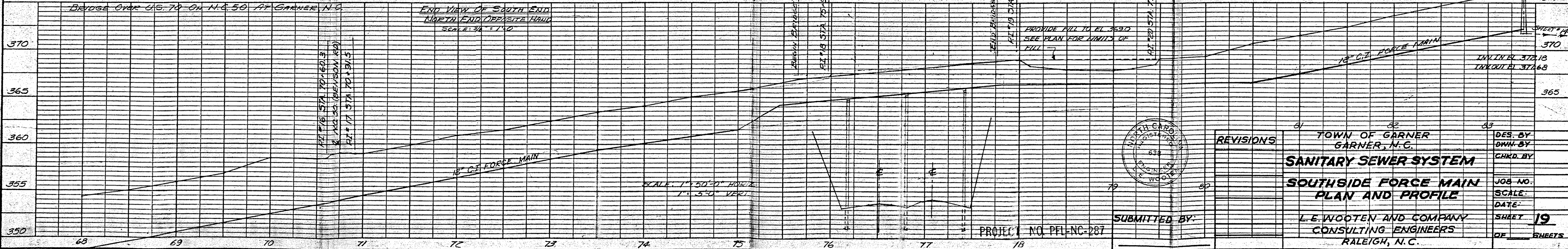
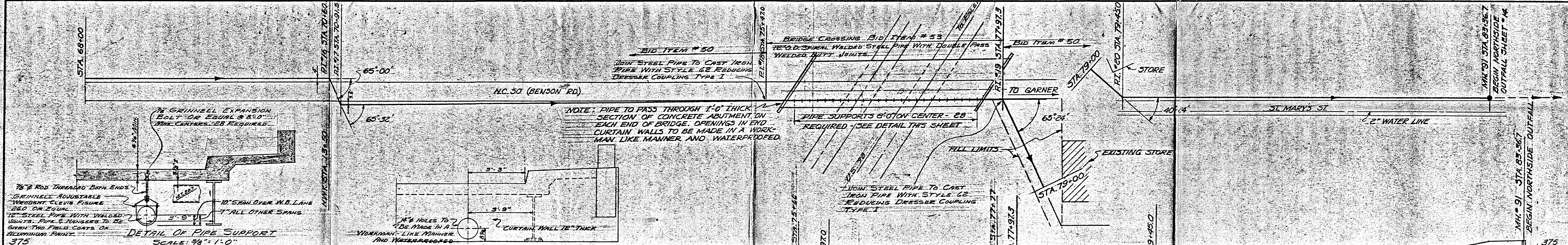
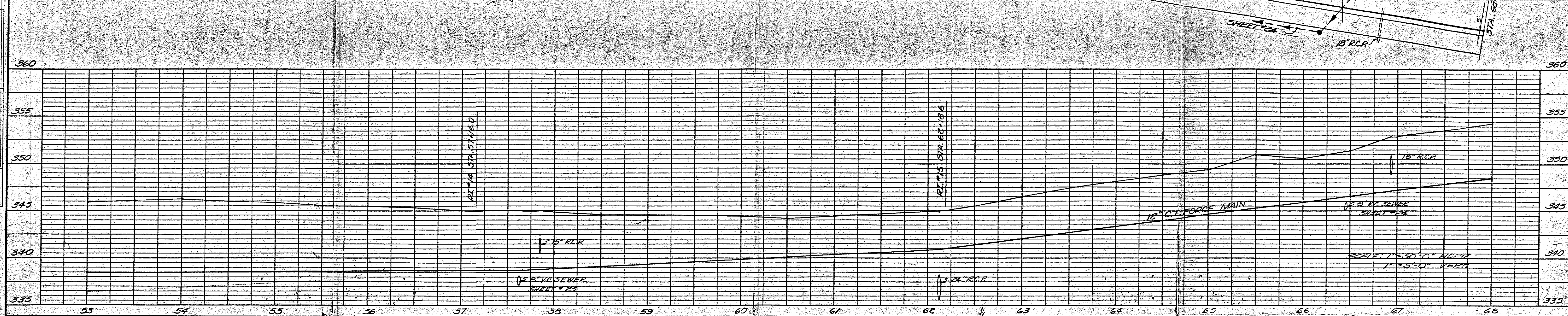
NOTE:
Except for flanges of split T's, diaphragms are
to be given one shop coat of red lead paint.
After erection, the diaphragms and any
surface of the existing beams damaged by the
installation are to be given one coat of red lead
paint and two coats of aluminum paint.
All material & workmanship is to
conform to the requirements of the
standard specifications of the U.S. Hwy. Comm.

PROPOSED
12" PIPE
CONNECTION
TO BRIDGE
OVER US 70
ON NC 50 IN
GARNER

A.L.B. 6-20-62

BY _____
 SURVEYED _____
 PLOTTED _____
 ALIGNMENT CHECKED _____
 NOTE BOOK NO. _____
 RT. OF WAY CHECKED _____

DATE _____
 BY _____
 SURVEYED _____
 PLOTTED _____
 GRADES CHECKED _____
 B. M. NOTED _____
 STRUCTURE NOTATION CHECKED _____



NO.	REVISIONS
81	
82	
83	
84	
85	
86	
87	
88	
89	
90	

TOWN OF GARNER
 GARNER, N.C.
SANITARY SEWER SYSTEM
SOUTHSIDE FORCE MAIN
PLAN AND PROFILE
 L.E. WOOTEN AND COMPANY
 CONSULTING ENGINEERS
 RALEIGH, N.C.

DES. BY
 DWN. BY
 CHKD. BY
 JOB NO.
 SCALE
 DATE
 SHEET **19**
 OF SHEETS