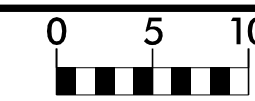


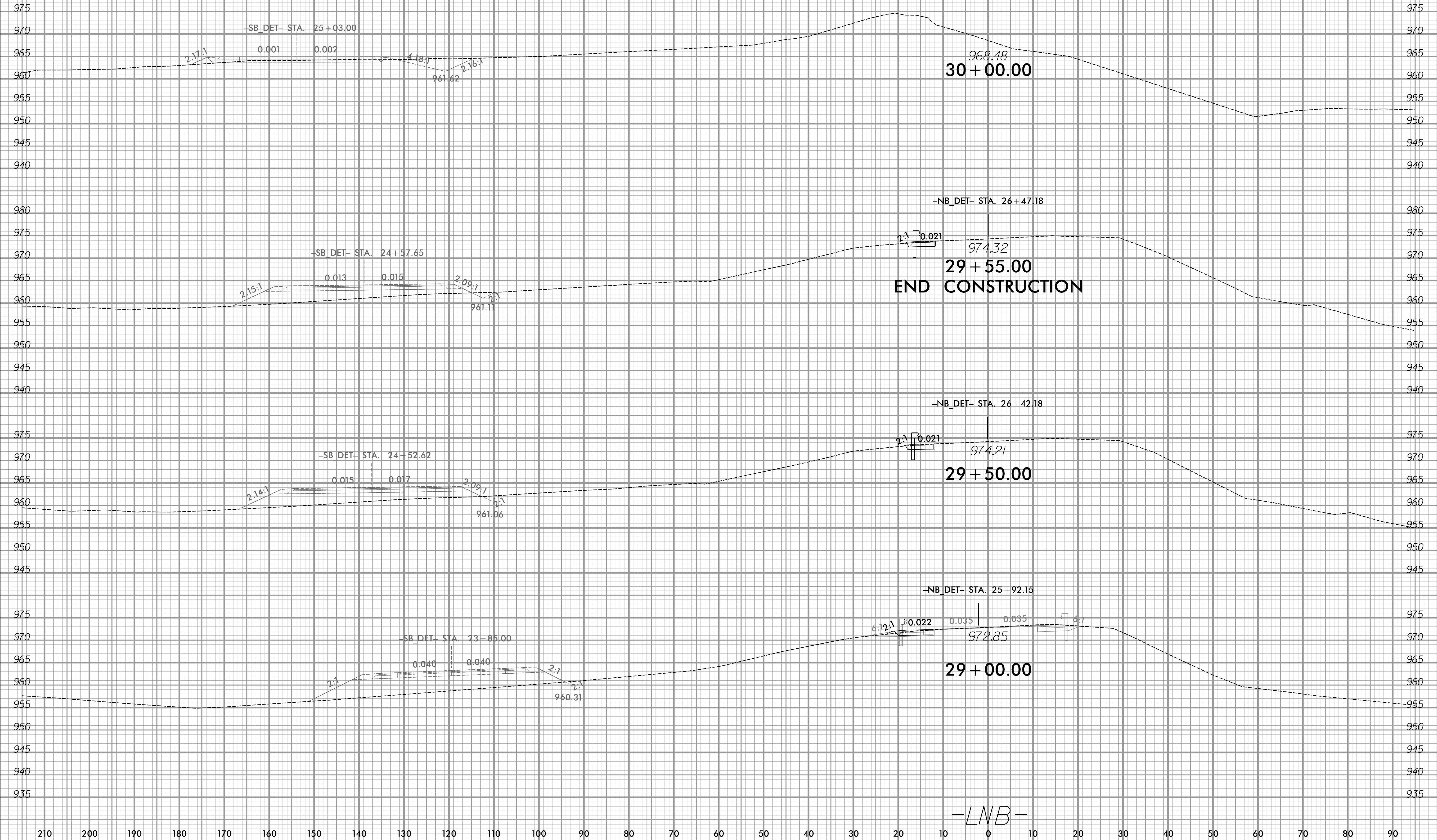
6/23/16



PROJ. REFERENCE NO.  
B-5527

SHEET NO.  
X-12B

210 200 190 180 170 160 150 140 130 120 110 100 90 80 70 60 50 40 30 20 10 0 10 20 30 40 50 60 70 80 90



-SB\_DET- STA. 25+03.00

968.48  
30+00.00

-SB\_DET- STA. 24+57.65

-NB\_DET- STA. 26+47.18

974.32  
29+55.00  
END CONSTRUCTION

-SB\_DET- STA. 24+52.62

-NB\_DET- STA. 26+42.18

974.21  
29+50.00

-SB\_DET- STA. 23+85.00

-NB\_DET- STA. 25+92.15

972.85  
29+00.00

-LNB-

9/20/2023  
X:\Projects\114-783\0050 - B-5527 CE Update\05-CAD\B5527\Roadway\XSC\B5527\_Rdy\_Xpl\_LNBend\NB\_DET.dgn  
micougas