

09/08/99

TIP PROJECT: B-5156

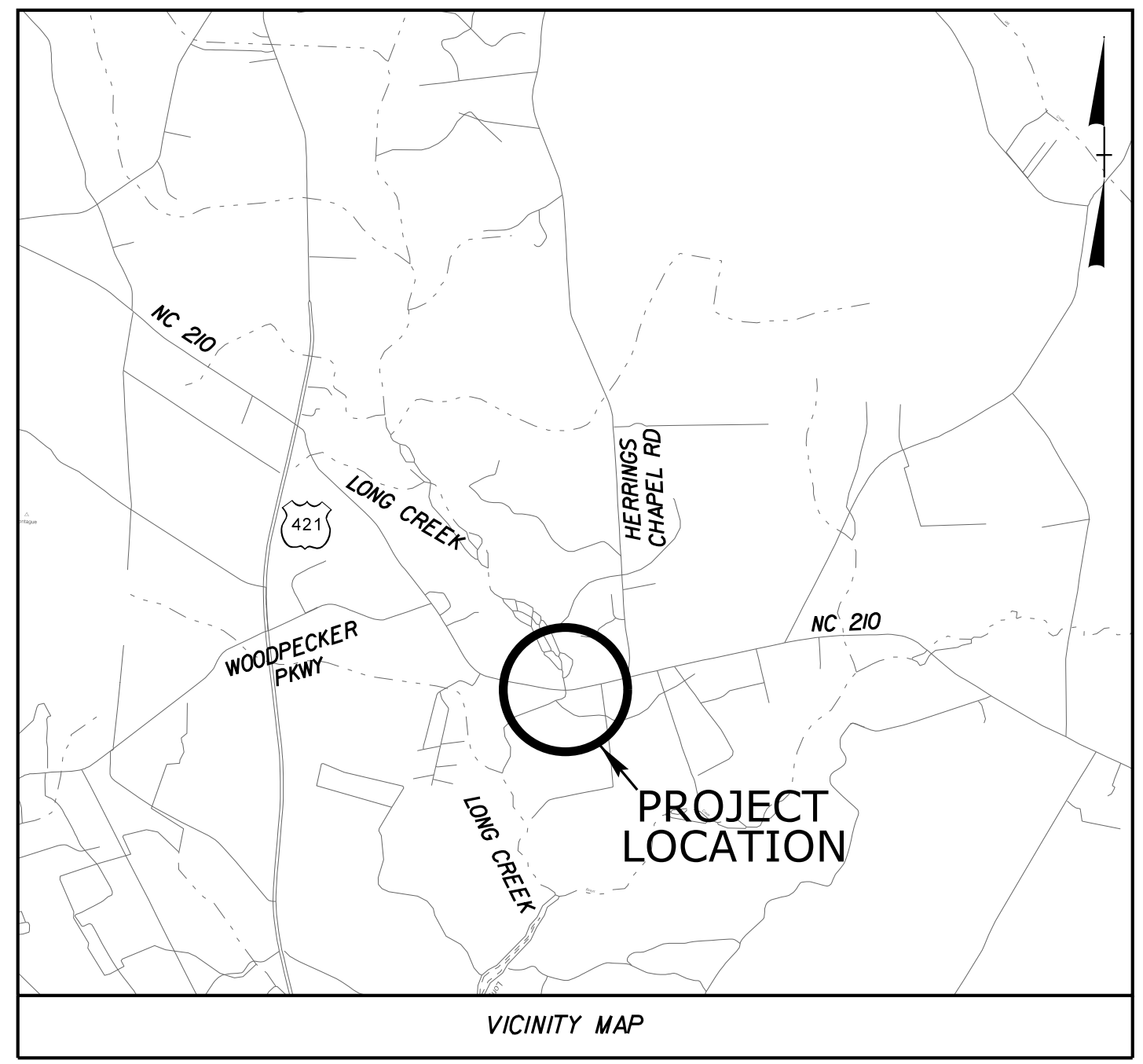
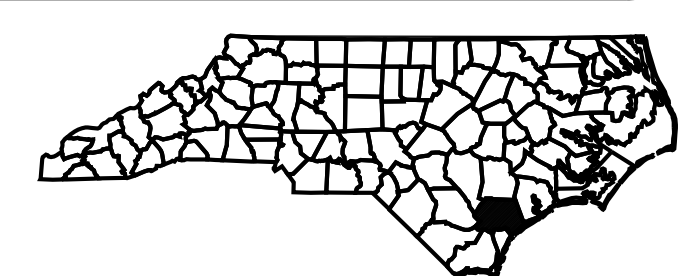
CONTRACT:

STATE OF NORTH CAROLINA
DIVISION OF HIGHWAYS

**UTILITIES BY OTHERS PLANS
PENDER COUNTY**

T.I.P. NO.	SHEET NO.
B-5156	UO-1

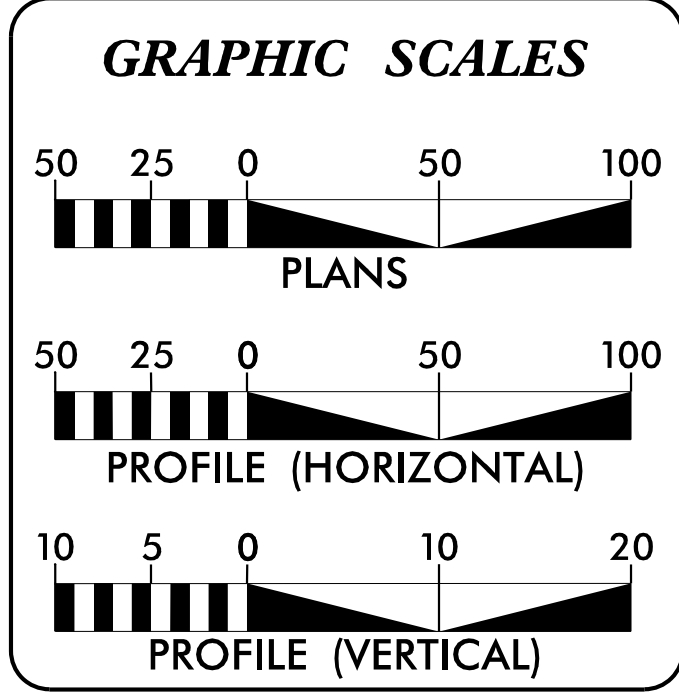
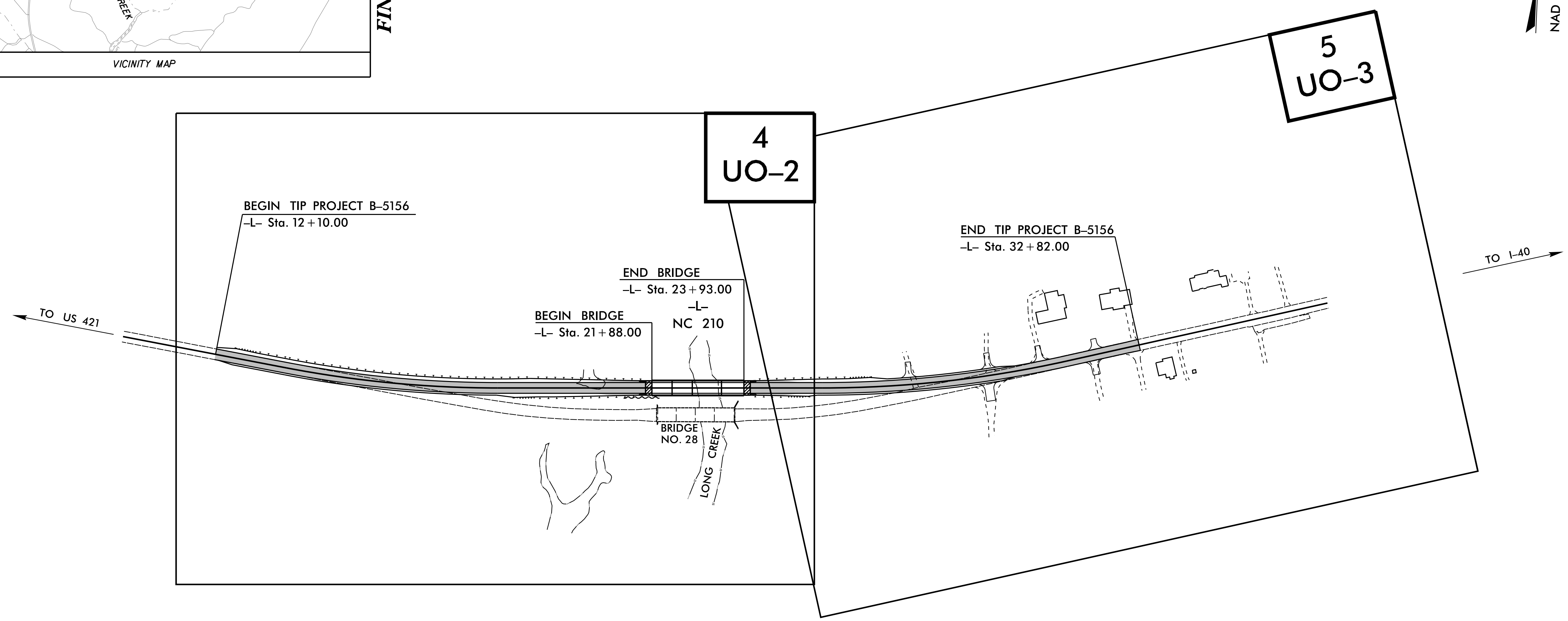
NOTE:
ALL UTILITY WORK SHOWN ON THIS SHEET IS TO BE DONE BY OTHERS. NO PAYMENT WILL BE MADE TO THE CONTRACTOR FOR UTILITY WORK SHOWN ON THIS SHEET.



FINAL PLANS

LOCATION: BRIDGE NO. 28 OVER LONG CREEK ON NC 210

TYPE OF WORK: TELEPHONE AND FIBER OPTIC



INDEX OF SHEETS

SHEET NO.	DESCRIPTION
UO-1	TITLE SHEET
UO-2 THRU UO-3	UBO PLAN SHEETS

UTILITY OWNERS ON PROJECT

(1) AT&T:	MIKE ELLER	980-215-7890
-----------	------------	--------------

PLANS PREPARED IN THE OFFICE BY:

Kimley»Horn

NC LICENSE #0102
REGISTERED PROFESSIONAL ENGINEER
REGISTERED PROFESSIONAL SURVEYOR
REGISTERED PROFESSIONAL LANDSCAPE ARCHITECT

NATE HARVEY, P.E.
PROJECT UTILITY COORDINATOR

**DIVISION OF HIGHWAYS
UTILITIES UNIT**

1555 MAIL SERVICES CENTER
RALEIGH, NC 27699-1555
PHONE (919) 707-6690
FAX (919) 250-4151

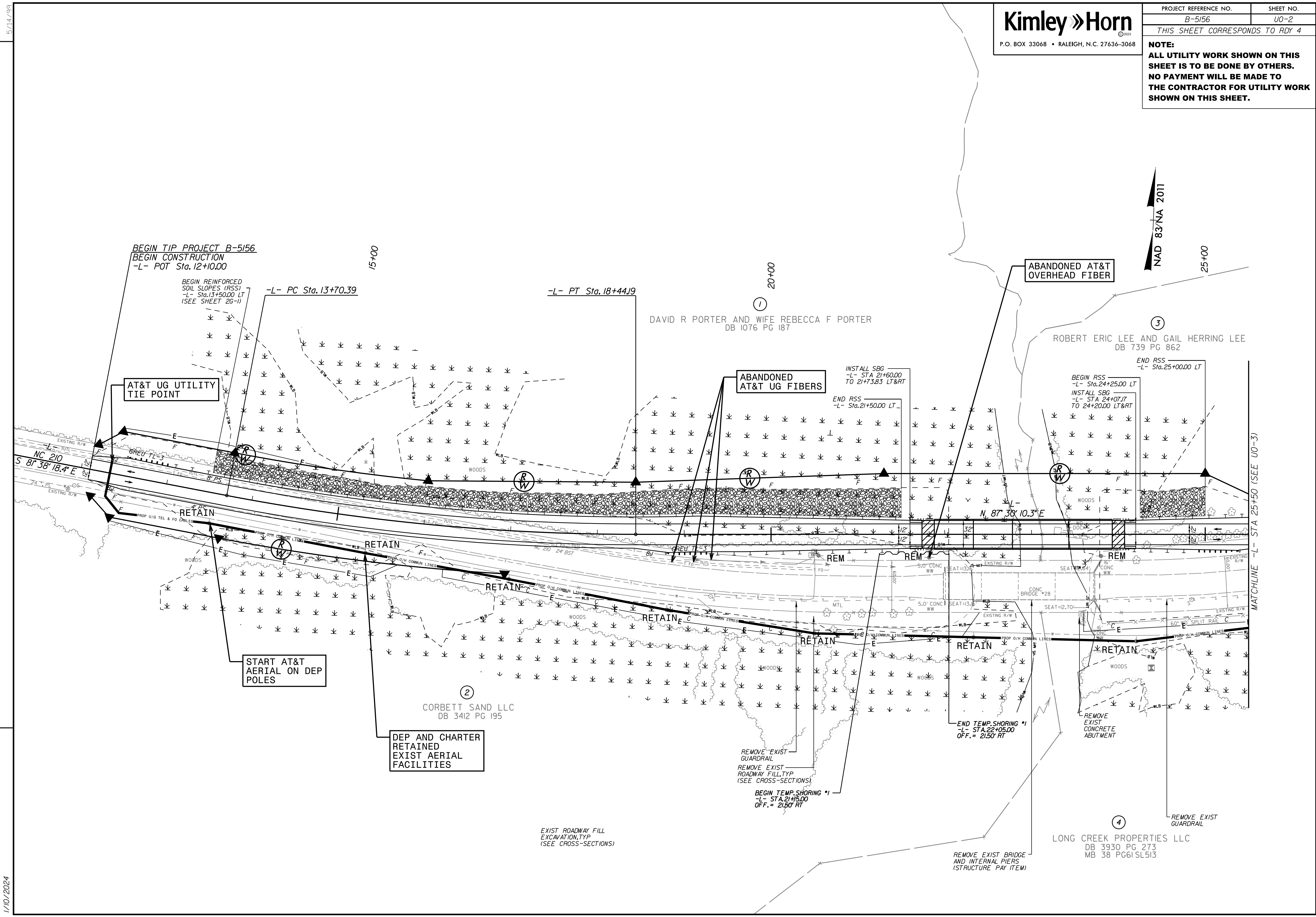
BO HEMPHILL, P.E.	EASTERN UTILITIES MANAGER
NABIL HAMDAN	REGIONAL UTILITIES ENGINEER
TANGA SAMPSON	REGIONAL UTILITIES COORDINATOR
LARRY JAMES	SENIOR UTILITY COORDINATOR

12/12/2023

5/14/99

NOTE:
ALL UTILITY WORK SHOWN ON THIS SHEET IS TO BE DONE BY OTHERS. NO PAYMENT WILL BE MADE TO THE CONTRACTOR FOR UTILITY WORK SHOWN ON THIS SHEET.

REVISIONS

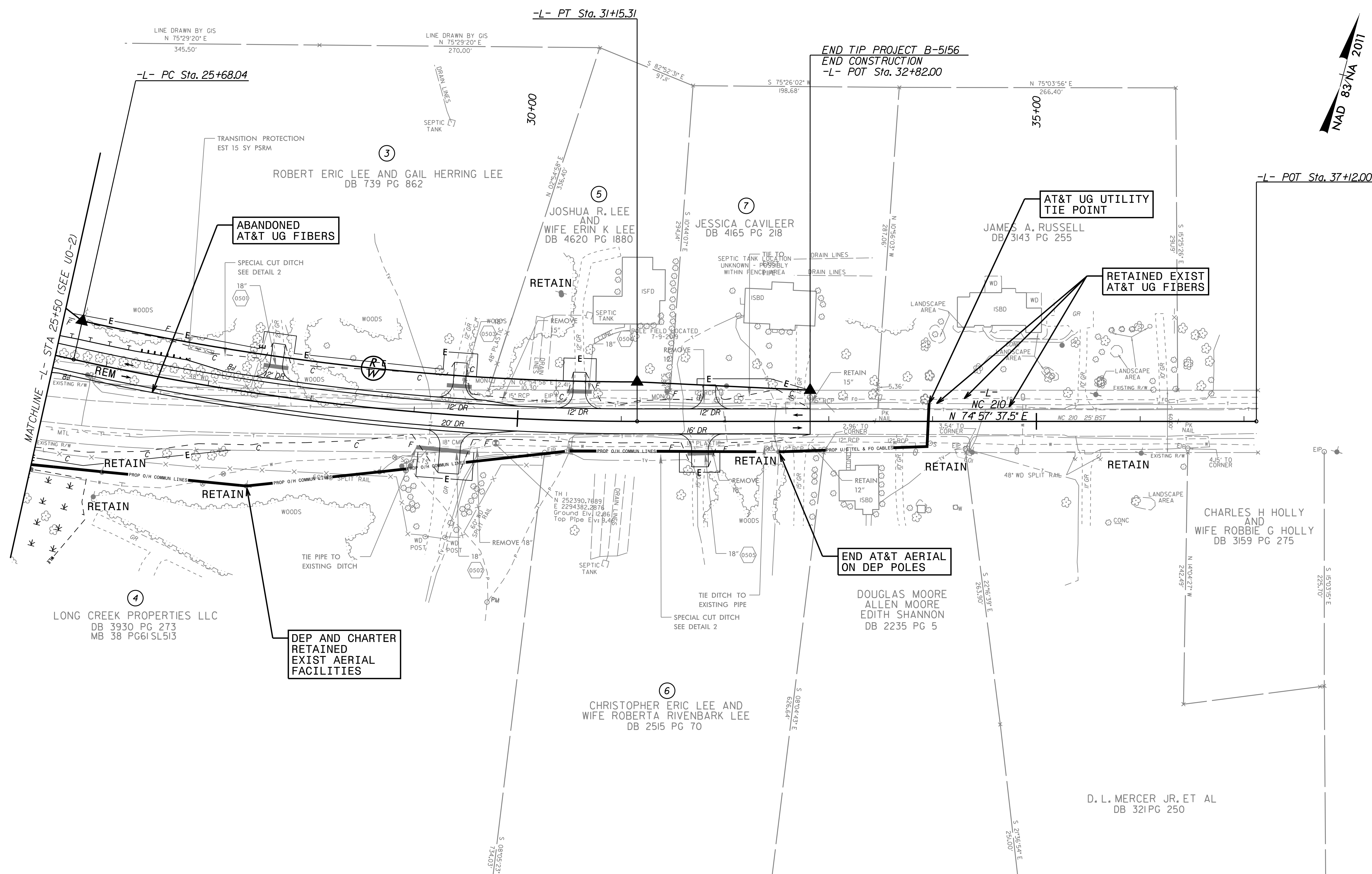
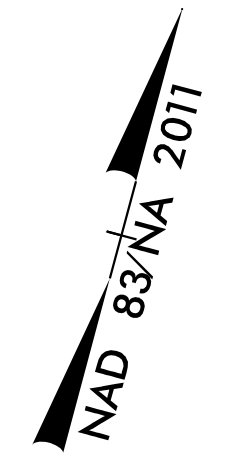


1/10/2024

NOTE:
ALL UTILITY WORK SHOWN ON THIS SHEET IS TO BE DONE BY OTHERS. NO PAYMENT WILL BE MADE TO THE CONTRACTOR FOR UTILITY WORK SHOWN ON THIS SHEET.

5/14/99

REVISIONS



LINE DRAWN BY GIS
 N 75°29'20\"/>

LINE DRAWN BY GIS
 N 75°29'20\"/>

END TIP PROJECT B-5156
END CONSTRUCTION
 -L- POT Sta. 32+82.00

-L- PC Sta. 25+68.04

-L- PT Sta. 31+15.31

AT&T UG UTILITY TIE POINT

RETAINED EXIST AT&T UG FIBERS

ABANDONED AT&T UG FIBERS

END AT&T AERIAL ON DEP POLES

DEP AND CHARTER RETAINED EXIST AERIAL FACILITIES

LONG CREEK PROPERTIES LLC
 DB 3930 PG 273
 MB 38 PG61SL513

CHRISTOPHER ERIC LEE AND WIFE ROBERTA RIVENBARK LEE
 DB 2515 PG 70

DOUGLAS MOORE ALLEN MOORE EDITH SHANNON
 DB 2235 PG 5

CHARLES H HOLLY AND WIFE ROBBIE G HOLLY
 DB 3159 PG 275

D. L. MERCER JR. ET AL
 DB 321 PG 250

1/10/2024