


STATE OF NORTH CAROLINA
DEPARTMENT OF TRANSPORTATION

Kimley » Horn
421 FAYETTEVILLE STREET, SUITE 600
RALEIGH, NC 27601
RIGHT-OF-WAY REV.
CONST. REV.

PROJECT REFERENCE NO. B-5156	SHEET NO. PMP-1
ROADWAY DESIGN ENGINEER	
	
3/8/2024	
DOCUMENT NOT CONSIDERED FINAL UNLESS ALL SIGNATURES COMPLETED	

PAVEMENT MARKING PLAN
PENDER COUNTY

LOCATION: BRIDGE 28 OVER LONG CREEK ON NC 210

INDEX

SHEET NO.	DESCRIPTION
PMP-1	PAVEMENT MARKING PLAN TITLE AND SCHEDULE SHEET
PMP-2 THRU PMP-3	PAVEMENT MARKING DETAIL

PAVEMENT MARKING SCHEDULE

SYMBOL	DESCRIPTION
	FINAL PAVEMENT MARKINGS THERMOPLASTIC (4", 90 MILS)
T1 T13	WHITE EDGELINE YELLOW DOUBLE CENTER
	PERMANENT RAISED PAVEMENT MARKERS
MA	YELLOW & YELLOW
	SNOWFLOWABLE MARKERS
ME	YELLOW & YELLOW

GENERAL NOTES

THE FOLLOWING GENERAL NOTES APPLY AT ALL TIMES FOR THE DURATION OF THE CONSTRUCTION PROJECT, EXCEPT WHEN OTHERWISE NOTED IN THE PLAN, OR DIRECTED BY THE ENGINEER.

A) INSTALL PAVEMENT MARKINGS ON THE FINAL SURFACE AS FOLLOWS:

ROAD NAME	MARKING	MARKER
-L- BRIDGE	THERMOPLASTIC THERMOPLASTIC	SNOWFLOWABLE PERMANENT RAISED

B) TIE PROPOSED PAVEMENT MARKING LINES TO EXISTING PAVEMENT MARKING LINES.

C) REMOVE/REPLACE ANY CONFLICTING/DAMAGED PAVEMENT MARKINGS AND MARKERS.

D) PASSING ZONES WILL BE DETERMINED IN THE FIELD AND MUST BE APPROVED BY THE ENGINEER.

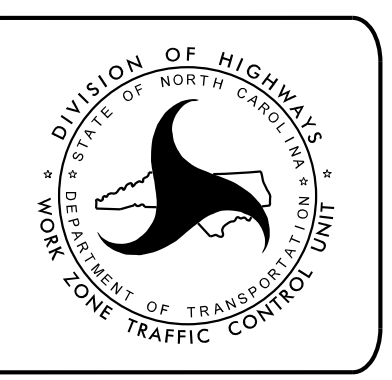
E) UNLESS OTHERWISE SPECIFIED, HEATED-IN-PLACE THERMOPLASTIC MAY BE USED IN LIEU OF EXTRUDED THERMOPLASTIC FOR ARROWS, STOP BARS, SYMBOLS, CHARACTERS AND DIAGONALS. IF HEATED-IN-PLACE IS USED, IT SHALL BE PAID FOR USING THE EXTRUDED THERMOPLASTIC PAY ITEM.

ROADWAY STANDARD DRAWING

THE FOLLOWING ROADWAY STANDARDS AS APPEAR IN "ROADWAY STANDARD DRAWINGS" - PROJECT SERVICES UNIT - N.C. DEPARTMENT OF TRANSPORTATION - RALEIGH, N.C., DATED JANUARY 2024 ARE APPLICABLE TO THIS PROJECT AND BY REFERENCE HEREBY ARE CONSIDERED A PART OF THESE PLANS:

STD. NO.	TITLE
1205.01	PAVEMENT MARKINGS - LINE TYPES AND OFFSETS
1205.02	PAVEMENT MARKINGS - TWO-LANE AND MULTILANE ROADWAYS
1205.12	PAVEMENT MARKINGS - BRIDGES
1250.01	RAISED PAVEMENT MARKERS - INSTALLATION SPACING
1251.01	RAISED PAVEMENT MARKERS - PERMANENT AND TEMPORARY
1261.01	GUARDRAIL AND BARRIER DELINEATORS - INSTALLATION SPACING
1261.02	GUARDRAIL AND BARRIER DELINEATORS - TYPES AND MOUNTING
1262.01	GUARDRAIL END DELINEATION
1264.01	OBJECT MARKERS
1264.02	PLACEMENT OF OBJECT MARKERS

PLAN REVIEWED BY: N.C.D.O.T. SIGNING AND DELINEATION UNIT	
MITCH EATON, P.E. _____	SIGNING & DELINEATION REGIONAL ENGINEER
STACEY W. JOHNS _____	SIGNING & DELINEATION PROJECT DESIGN ENGINEER

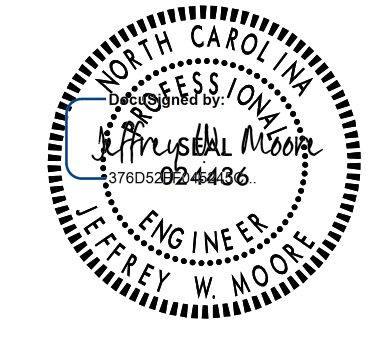


PLAN PREPARED BY: Kimley-Horn and Associates	
TYLER G. SPRING, P.E. _____	PROJECT DESIGN ENGINEER
TYLER G. SPRING, P.E. _____	DESIGNER

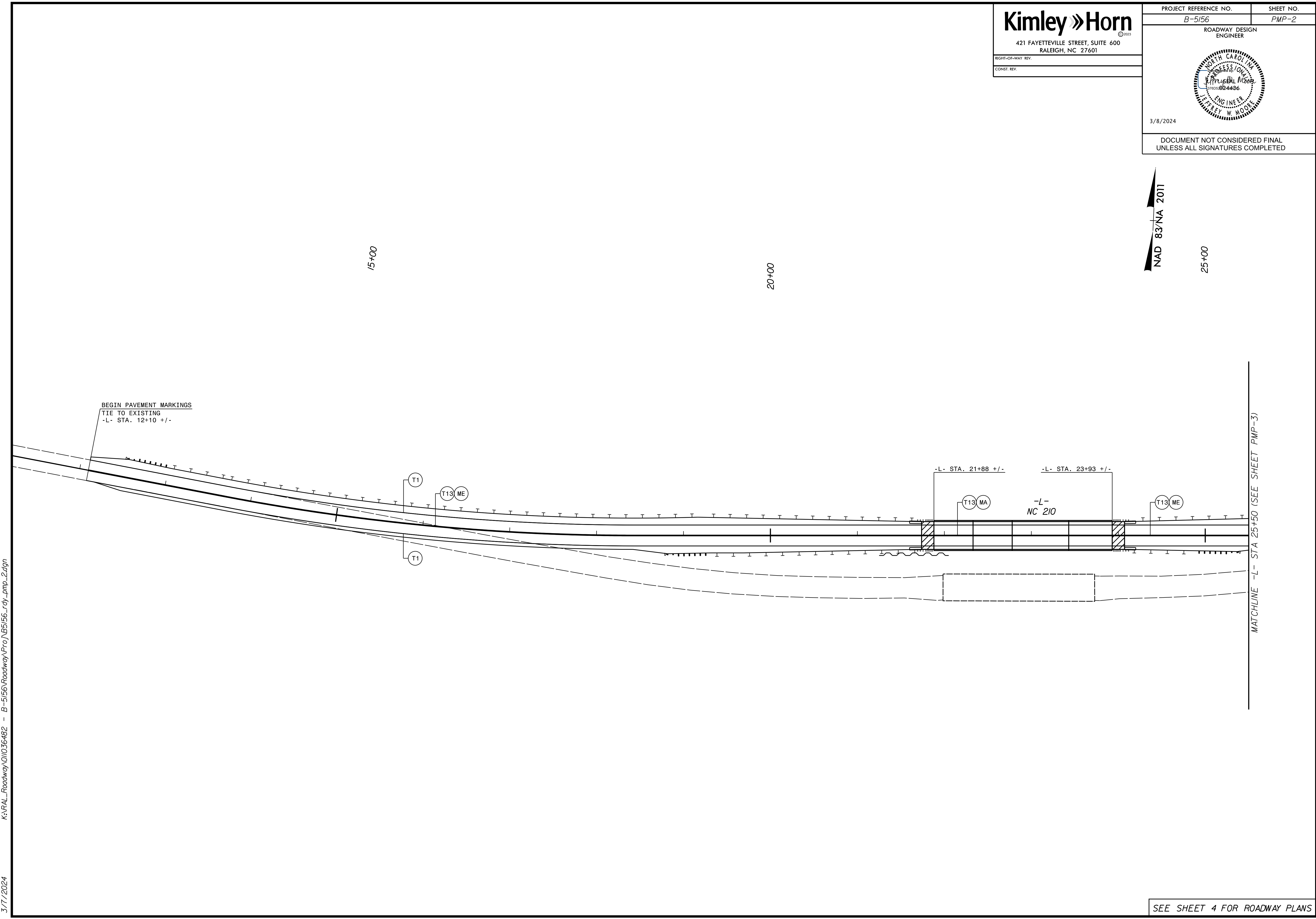


K:\RAL_Roadway\01036482 - B-5156\Roadway\Proj\B5156_rdy_pmp_1.dgn
3/7/2024

Kimley » Horn
 © 2023
 421 FAYETTEVILLE STREET, SUITE 600
 RALEIGH, NC 27601

PROJECT REFERENCE NO. B-5156	SHEET NO. PMP-2
ROADWAY DESIGN ENGINEER	
	
3/8/2024	
DOCUMENT NOT CONSIDERED FINAL UNLESS ALL SIGNATURES COMPLETED	

NAD 83/NA 2011

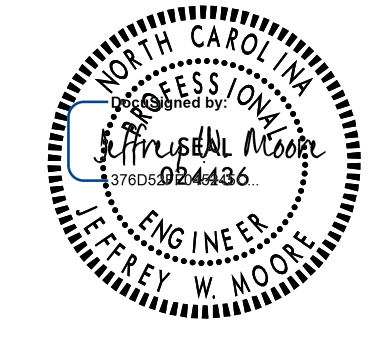


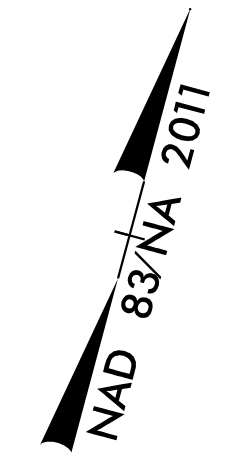
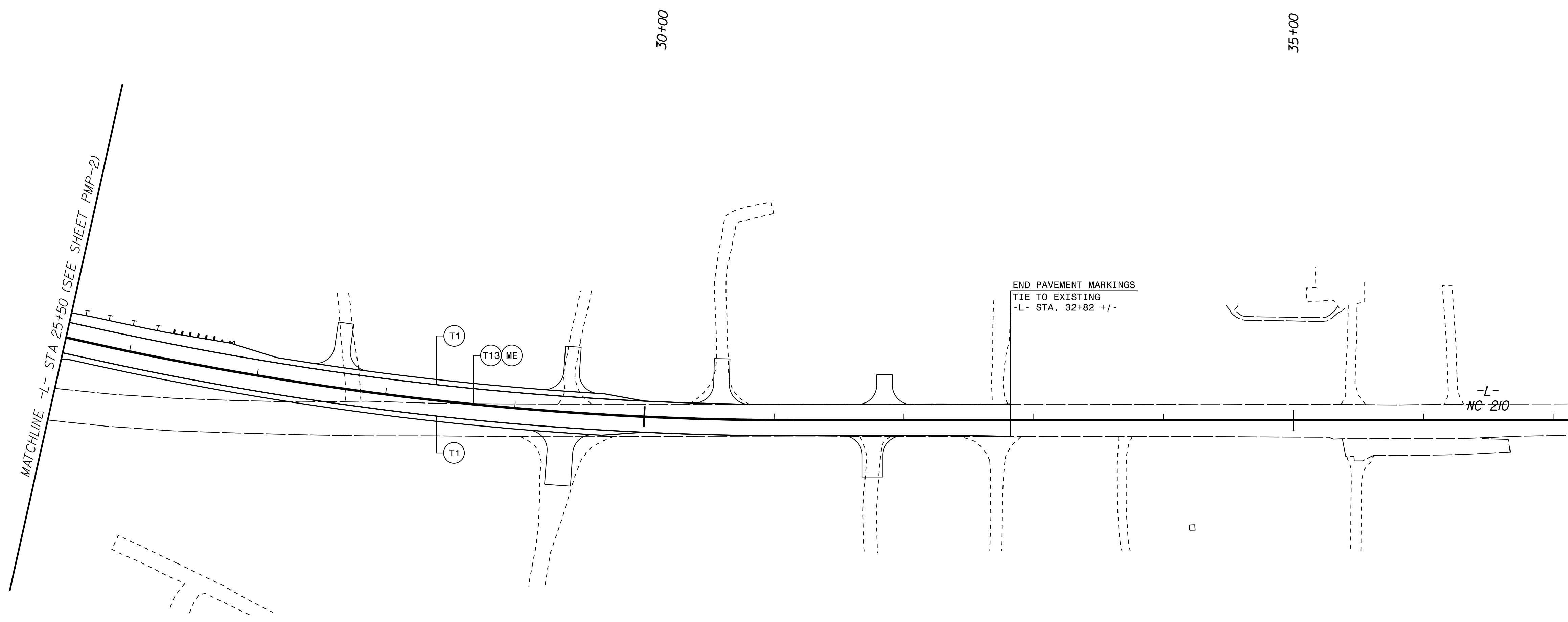
K:\RAL_Roadway\01036482 - B-5156\Roadway\Proj\B5156_rdy_pmp_2.dgn

3/7/2024

SEE SHEET 4 FOR ROADWAY PLANS

Kimley » Horn
 © 2023
 421 FAYETTEVILLE STREET, SUITE 600
 RALEIGH, NC 27601

PROJECT REFERENCE NO. B-5156	SHEET NO. PMP-3
ROADWAY DESIGN ENGINEER	
	
3/8/2024	
DOCUMENT NOT CONSIDERED FINAL UNLESS ALL SIGNATURES COMPLETED	



K:\RAL_Roadway\01036482 - B-5156\Roadway\Proj\B5156_rdy_pmp_3.dgn
 3/7/2024

SEE SHEET 5 FOR ROADWAY PLANS