

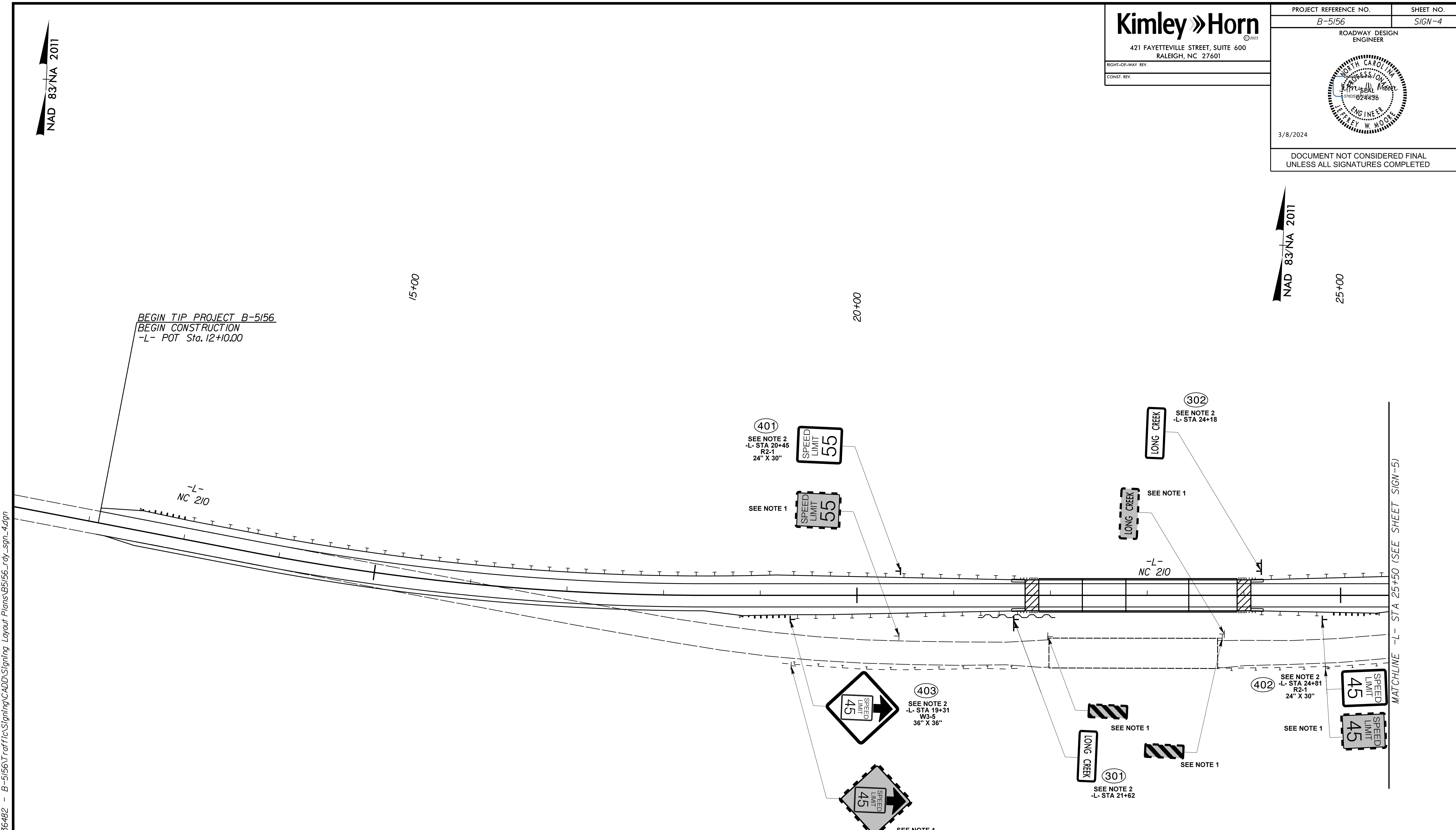
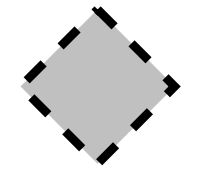




NAD 83/NA 2011

 <p>421 FAYETTEVILLE STREET, SUITE 600 RALEIGH, NC 27601</p>	PROJECT REFERENCE NO. B-5156	SHEET NO. SIGN-4
	ROADWAY DESIGN ENGINEER  3/8/2024	
DOCUMENT NOT CONSIDERED FINAL UNLESS ALL SIGNATURES COMPLETED		

NAD 83/NA 2011



SIGNING LEGEND	
	DENOTES EXISTING SIGN
	DENOTES NEW "U" CHANNEL POST/PROPOSED SIGN LOCATION
	DENOTES EXISTING "U" CHANNEL POST/EXISTING SIGN LOCATION

- SIGNING NOTES**
- DISPOSAL OF SIGN SYSTEM, U-CHANNEL.
 - SIGN ERECTION, TYPE D, E, OR F.
 - SIGN ERECTION, RELOCATE TYPE D, E, OR F (GROUND MOUNTED).

K:\RAL_Roadway\01036482 - B-5156\Traffic\Signing\CADD\Signing_Layout_Plans\B5156_roy_sgn_4.dgn 3/7/2024