

Location and Surveys

LOCATION AND SURVEYS UNIT
 DIVISION 3
 5310 BARBADOS BLVD, SUITE 102
 CASTLE HAYNE, NORTH CAROLINA 28429

PROJECT SURVEYOR

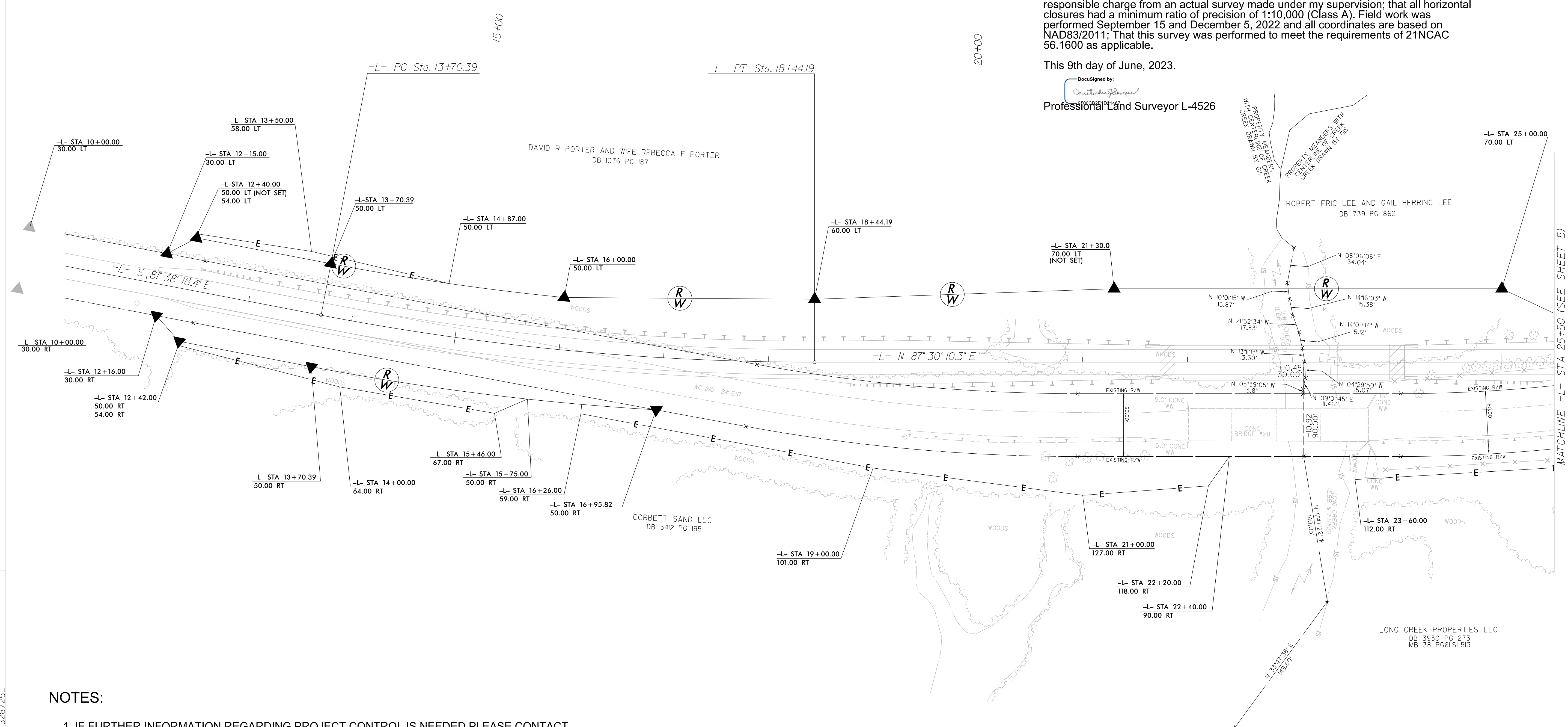


DOCUMENT NOT CONSIDERED FINAL UNLESS ALL SIGNATURES COMPLETED

-L-
 PI Sta 16+08.01
 $\Delta = 10^{\circ} 51' 31.3" (LT)$
 $D = 2' 17" 30.6"$
 $L = 473.80'$
 $T = 237.61'$
 $R = 2,500.00'$
 $SE = 0.035$
 $RO = 105'$

NAD 83/NA 2011

REVISIONS



I, Christopher J. Sawyer, PLS, certify that the right of way and permanent easement monumentation for this project shown herein was completed under my direct and responsible charge from an actual survey made under my supervision; that all horizontal closures had a minimum ratio of precision of 1:10,000 (Class A). Field work was performed September 15 and December 5, 2022 and all coordinates are based on NAD83/2011; That this survey was performed to meet the requirements of 21NCAC 56.1600 as applicable.

This 9th day of June, 2023.

DocuSigned by:
 Christopher J Sawyer
 Professional Land Surveyor L-4526

NOTES:

1. IF FURTHER INFORMATION REGARDING PROJECT CONTROL IS NEEDED PLEASE CONTACT THE LOCATION AND SURVEYS UNIT.
2. PROJECT CONTROL WAS ESTABLISHED USING GNSS, THE GLOBAL NAVIGATION SATELLITE SYSTEM.
3. RIGHT OF WAY MONUMENTATION ESTABLISHED SEPTEMBER 15 and DECEMBER 5, 2022.

07 JUN 2023 10:06
 S:\Units\Projects\BRIDGE\Pender\B5156.L\LongCreek\Working\150 series sheets\B5156.L.s_rw04.dgn
 m.j.d.w.a.