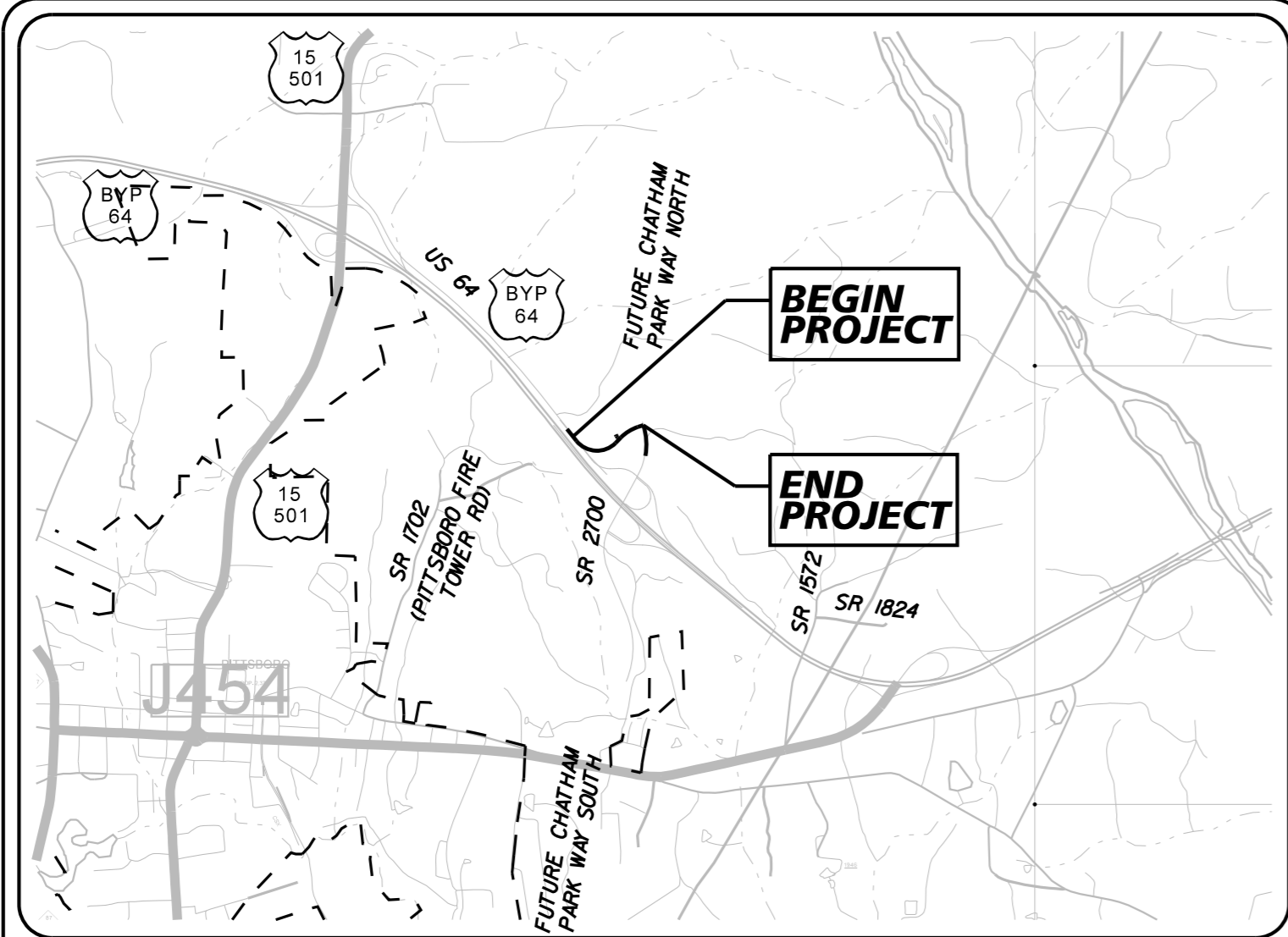


TIP PROJECT: R-5963D



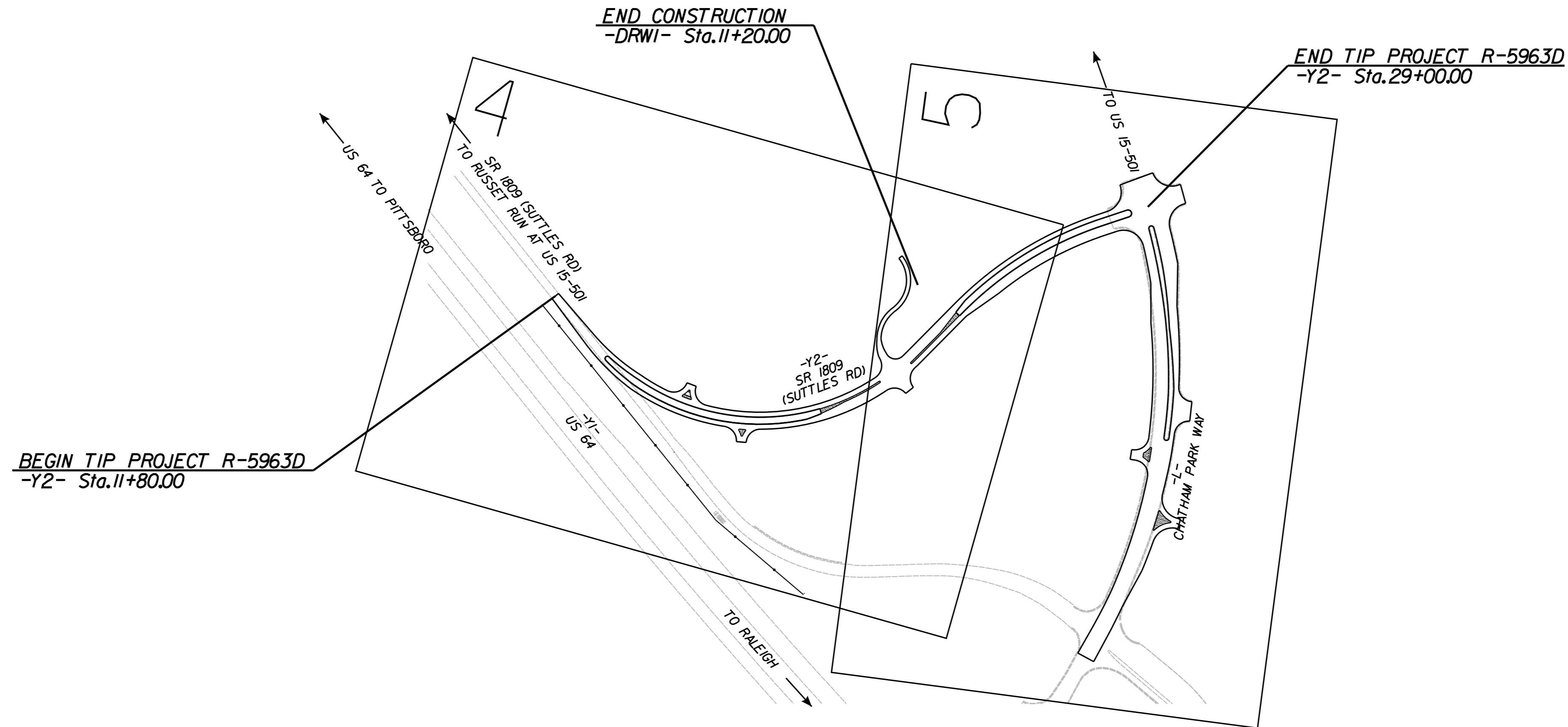
VICINITY MAP
NOT TO SCALE

STATE OF NORTH CAROLINA
DIVISION OF HIGHWAYS
**PLAN FOR PROPOSED
HIGHWAY EROSION CONTROL**

CHATHAM COUNTY

LOCATION: SR 1809 (SUTTLES ROAD) TO CHATHAM PARK WAY
TYPE OF WORK: GRADING, DRAINAGE, AND PAVING

STATE	STATE PROJECT REFERENCE NO.	SHEET NO.	TOTAL SHEETS
N.C.	R-5963D	EC-1	EC-7
STATE PROJ. NO.	F.A. PROJ. NO.	DESCRIPTION	
48599.1.5		P.E.	
48599.2.9		RW & UTIL	
48599.3.5		CONST.	

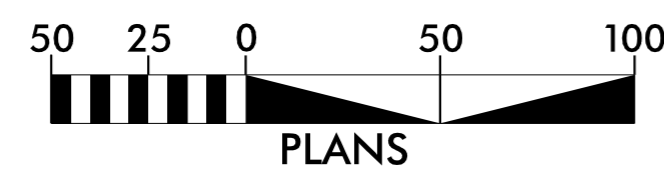


CHATHAM PARK WAY IS A PARTIAL CONTROLLED-ACCESS PROJECT WITH ACCESS LIMITED TO POINTS AS SHOWN ON THE PLANS

THIS PROJECT CONTAINS EROSION CONTROL PLANS FOR CLEARING AND GRUBBING PHASE OF CONSTRUCTION.

THIS PROJECT HAS BEEN DESIGNED TO SENSITIVE WATERSHED STANDARDS.

GRAPHIC SCALE



THESE EROSION AND SEDIMENT CONTROL PLANS COMPLY WITH THE APPLICABLE REGULATIONS SET FORTH BY THE NCG-010000 GENERAL CONSTRUCTION PERMIT EFFECTIVE APRIL 1, 2019 AND ISSUED BY THE NORTH CAROLINA DEPARTMENT OF ENVIRONMENTAL QUALITY DIVISION OF WATER RESOURCES.

Kimley»Horn

Prepared in the Office of:

Kimley-Horn
421 Fayetteville Street, Suite 600
Raleigh, NC 27601

Designed by:

DAVID HURSEY
NAME

4359
LEVEL III CERTIFICATION NO.

Roadway Standard Drawings

The "Roadway Standard Drawings"- Roadway Design Unit - N. C. Department of Transportation - Raleigh, N. C., dated January 2024 and the latest revision thereto are applicable to this project and by reference hereby are considered a part of these plans.

DIVISION OF HIGHWAYS STATE OF NORTH CAROLINA

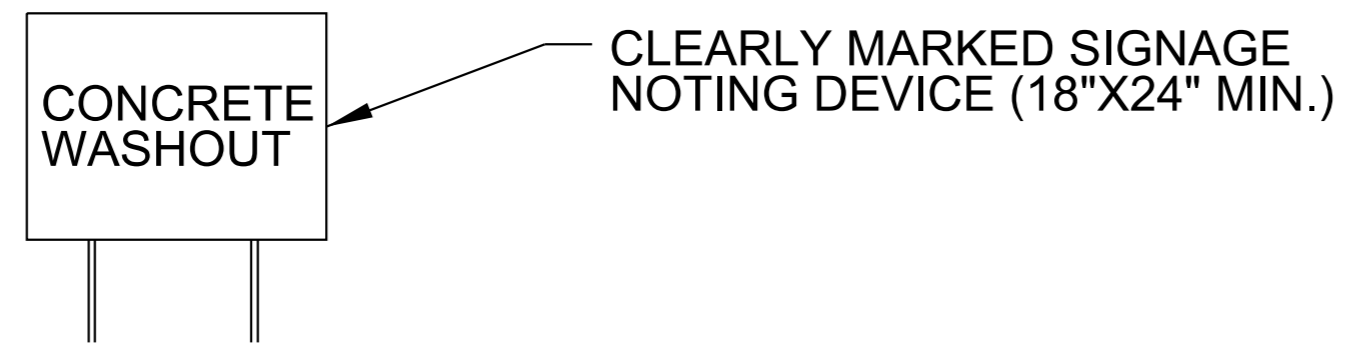
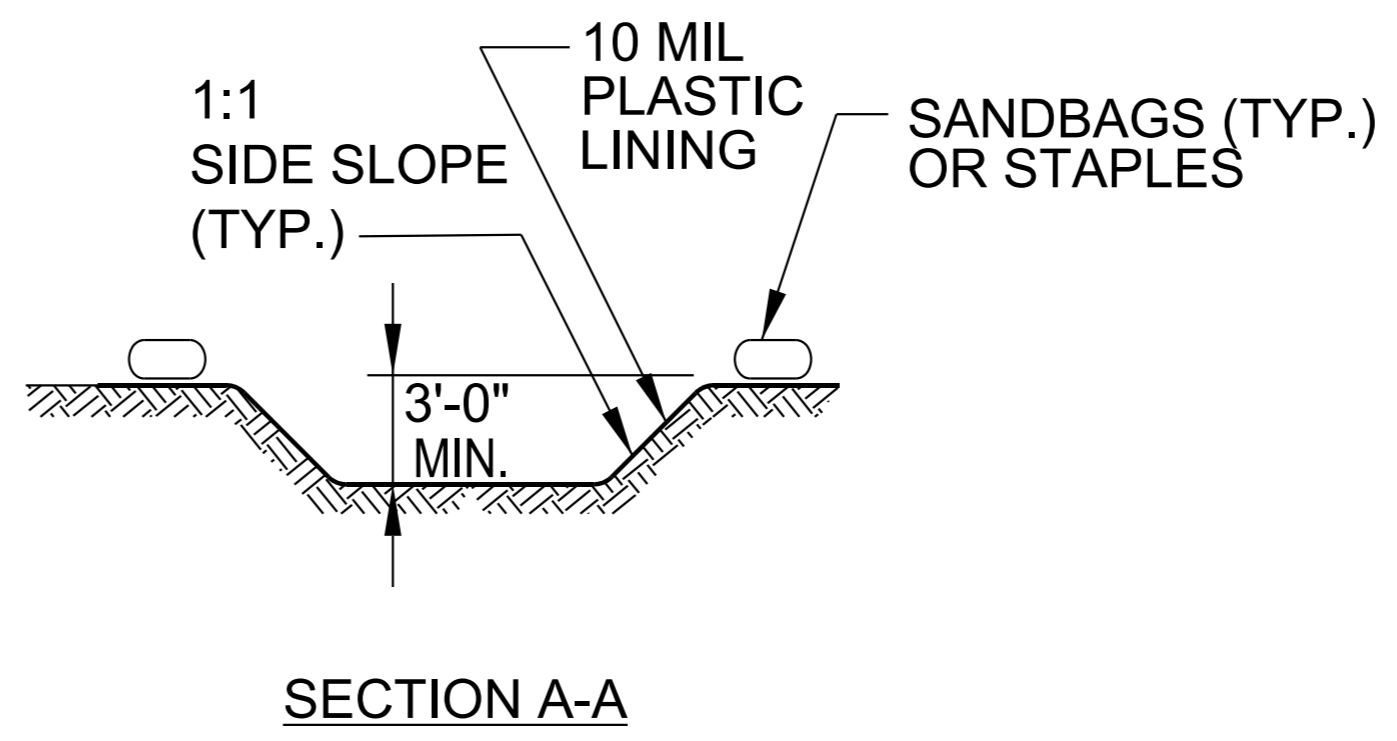
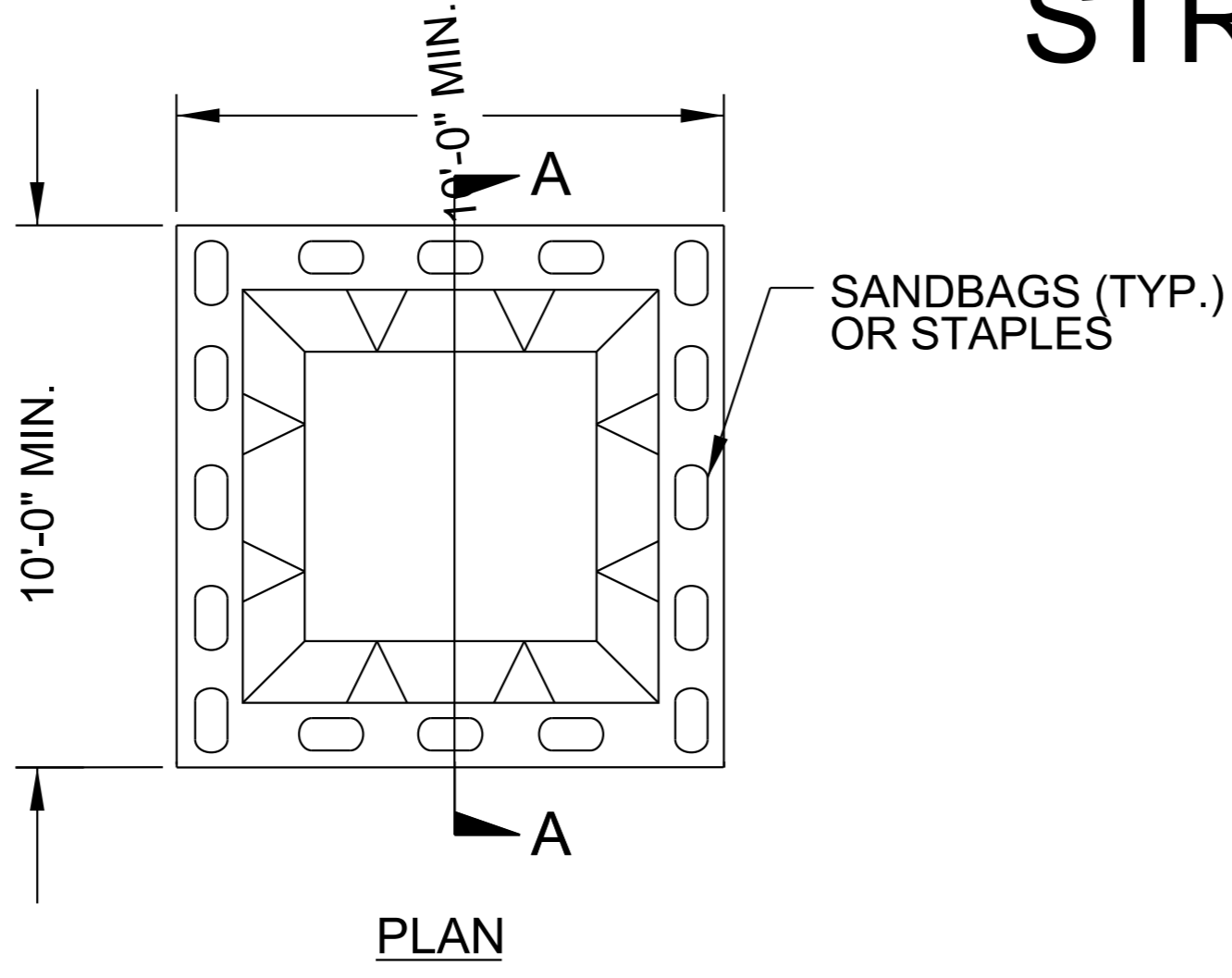
PROJECT REFERENCE NO. R-5963D	SHEET NO. EC-02
ROADWAY DESIGN ENGINEER	HYDRAULICS ENGINEER

EROSION & SEDIMENT CONTROL LEGEND

Std. #	Description	Symbol	Std. #	Description	Symbol
1605.01	Temporary Silt Fence		1633.01	Temporary Rock Silt Check Type A	
1606.01	Special Sediment Control Fence		1633.02	Temporary Rock Silt Check Type B	
1622.01	Temporary Berms and Slope Drains		1633.03	Temporary Rock Silt Check Type A with Excelsior Matting and Flocculant	
1630.02	Silt Basin Type B		1634.01	Temporary Rock Sediment Dam Type A	
1630.03	Temporary Silt Ditch		1634.02	Temporary Rock Sediment Dam Type B	
1630.04	Stilling Basin		1635.01	Rock Pipe Inlet Sediment Trap Type A	
1630.05	Temporary Diversion		1635.02	Rock Pipe Inlet Sediment Trap Type B	
1630.06	Special Stilling Basin		1636.01	Excelsior Wattle Check	
1630.07	Skimmer Basin		1636.01	Excelsior Wattle Check with Flocculant	
1630.08	Tiered Skimmer Basin		1636.01	Coir Fiber Wattle Check	
1630.09	Earthen Dam with Skimmer		1636.01	Coir Fiber Wattle Check with Flocculant	
	Infiltration Basin		1636.02	Silt Fence Excelsior Wattle Break	
	Rock Inlet Sediment Trap:			Silt Fence Coir Fiber Wattle Break	
1632.01	Type A		1636.02	Excelsior Wattle Barrier	
1632.02	Type B		1636.03	Coir Fiber Wattle Barrier	
1632.03	Type C				

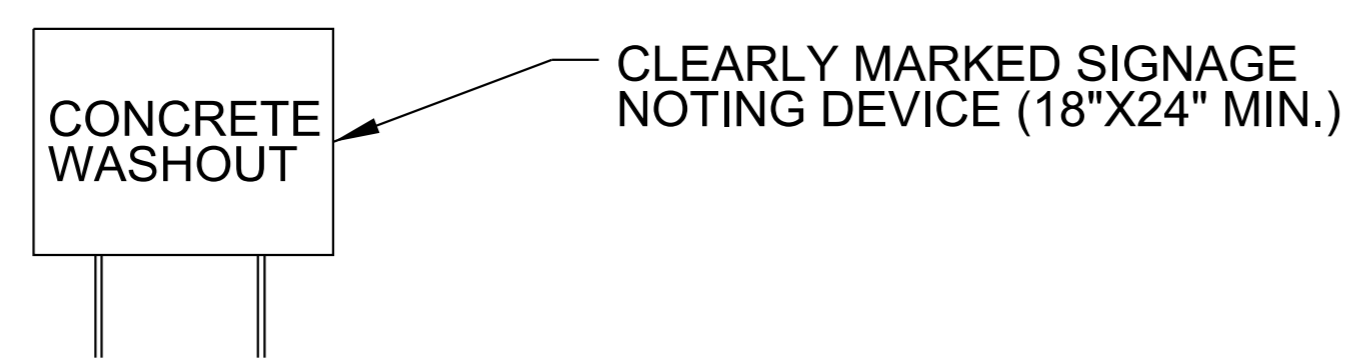
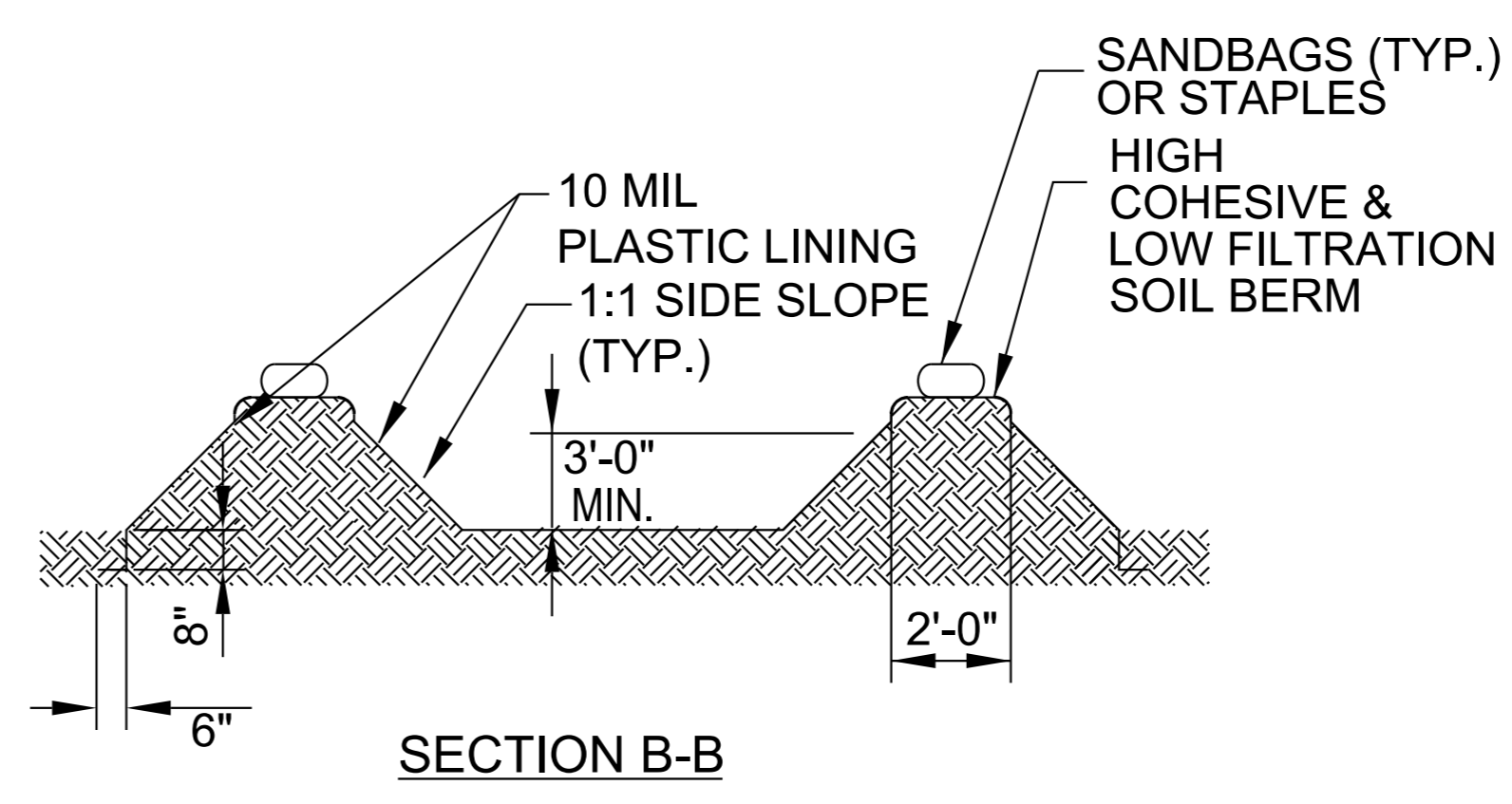
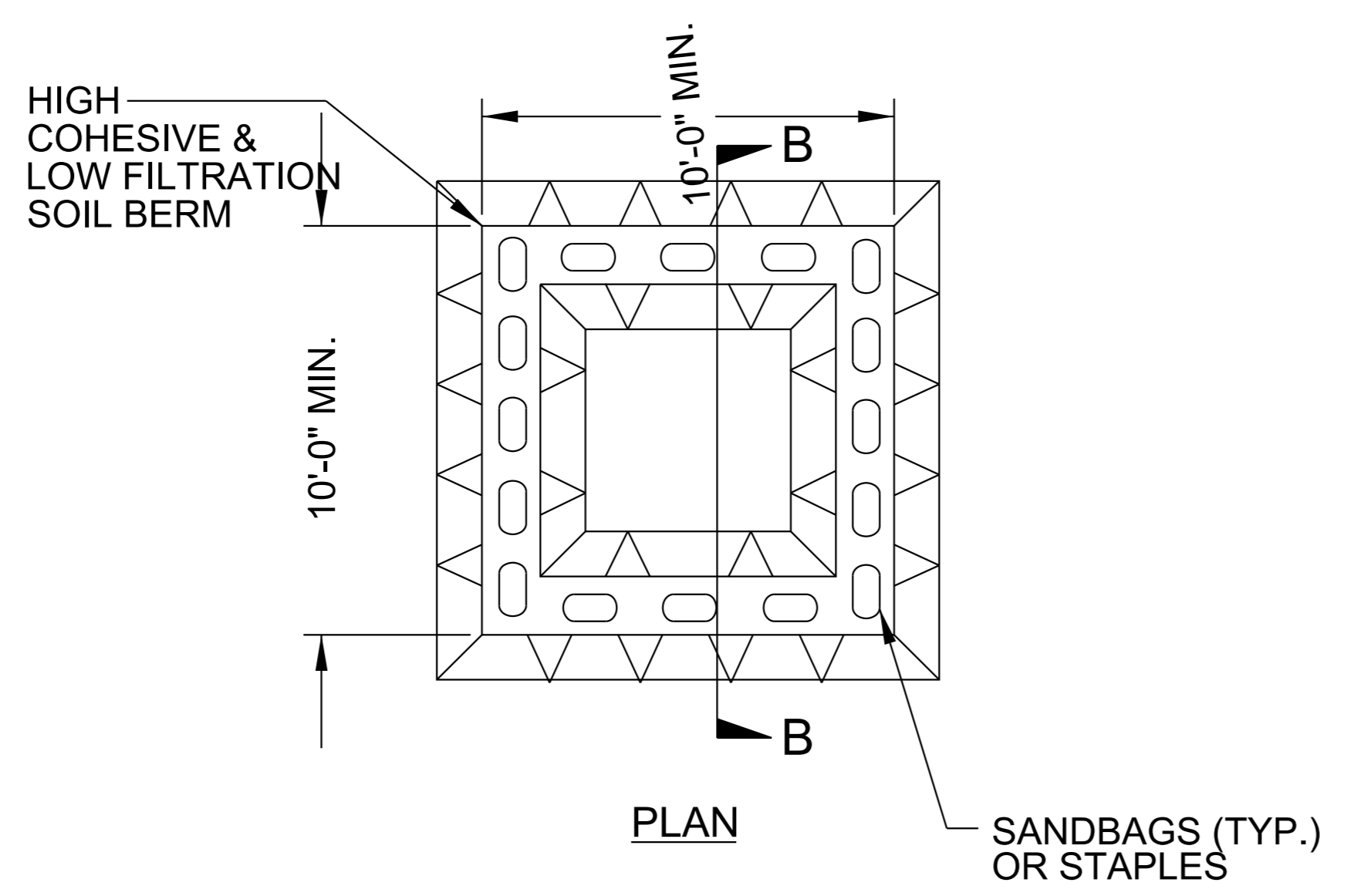
PROJECT REFERENCE NO. <i>R-5963D</i>	SHEET NO. <i>EC-02A</i>
RW SHEET NO.	
ROADWAY DESIGN ENGINEER	HYDRAULICS ENGINEER

ONSITE CONCRETE WASHOUT STRUCTURE WITH LINER



BELOW GRADE WASHOUT STRUCTURE
NOT TO SCALE

- NOTES:**
1. ACTUAL LOCATION DETERMINED IN FIELD
 2. THE CONCRETE WASHOUT STRUCTURES SHALL BE MAINTAINED WHEN THE LIQUID AND/OR SOLID REACHES 75% OF THE STRUCTURES CAPACITY TO PROVIDE ADEQUATE HOLDING CAPACITY WITH A MINIMUM 12 INCHES OF FREEBOARD.
 3. CONCRETE WASHOUT STRUCTURE NEEDS TO BE CLEARLY MARKED WITH SIGNAGE NOTING DEVICE.



ABOVE GRADE WASHOUT STRUCTURE
NOT TO SCALE

- NOTES:**
1. ACTUAL LOCATION DETERMINED IN FIELD
 2. THE CONCRETE WASHOUT STRUCTURES SHALL BE MAINTAINED WHEN THE LIQUID AND/OR SOLID REACHES 75% OF THE STRUCTURES CAPACITY TO PROVIDE ADEQUATE HOLDING CAPACITY WITH A MINIMUM 12 INCHES OF FREEBOARD.
 3. CONCRETE WASHOUT STRUCTURE NEEDS TO BE CLEARLY MARKED WITH SIGNAGE NOTING DEVICE.

DIVISION OF HIGHWAYS
STATE OF NORTH CAROLINA

PROJECT REFERENCE NO. <i>R-5963D</i>	SHEET NO. <i>EC-3A</i>
ROADWAY DESIGN ENGINEER	HYDRAULICS ENGINEER

SOIL STABILIZATION TIMEFRAMES

<i>SITE DESCRIPTION</i>	<i>STABILIZATION TIME</i>	<i>TIMEFRAME EXCEPTIONS</i>
PERIMETER DIKES, SWALES, DITCHES AND SLOPES	7 DAYS	NONE
HIGH QUALITY WATER (HQW) ZONES	7 DAYS	NONE
SLOPES STEEPER THAN 3:1	7 DAYS	IF SLOPES ARE 10' OR LESS IN LENGTH AND ARE NOT STEEPER THAN 2:1, 14 DAYS ARE ALLOWED.
SLOPES 3:1 TO 4:1	14 DAYS	7 DAYS FOR SLOPES GREATER THAN 50' IN LENGTH WITH SLOPES STEEPER THAN 4:1. 7 DAYS FOR PERIMETER DIKES, SWALES, DITCHES PERIMETER SLOPES, AND HQW ZONES
ALL OTHER AREAS WITH SLOPES FLATTER THAN 4:1	14 DAYS	7 DAYS FOR PERIMETER DIKES, SWALES, DITCHES PERIMETER SLOPES, AND HQW ZONES

5/14/99

NOTE: PLACE TEMPORARY ROCK SEDIMENT DAMS TYPE - B AND TEMPORARY ROCK SILT CHECKS TYPE - A AT DRAINAGE OUTLETS.

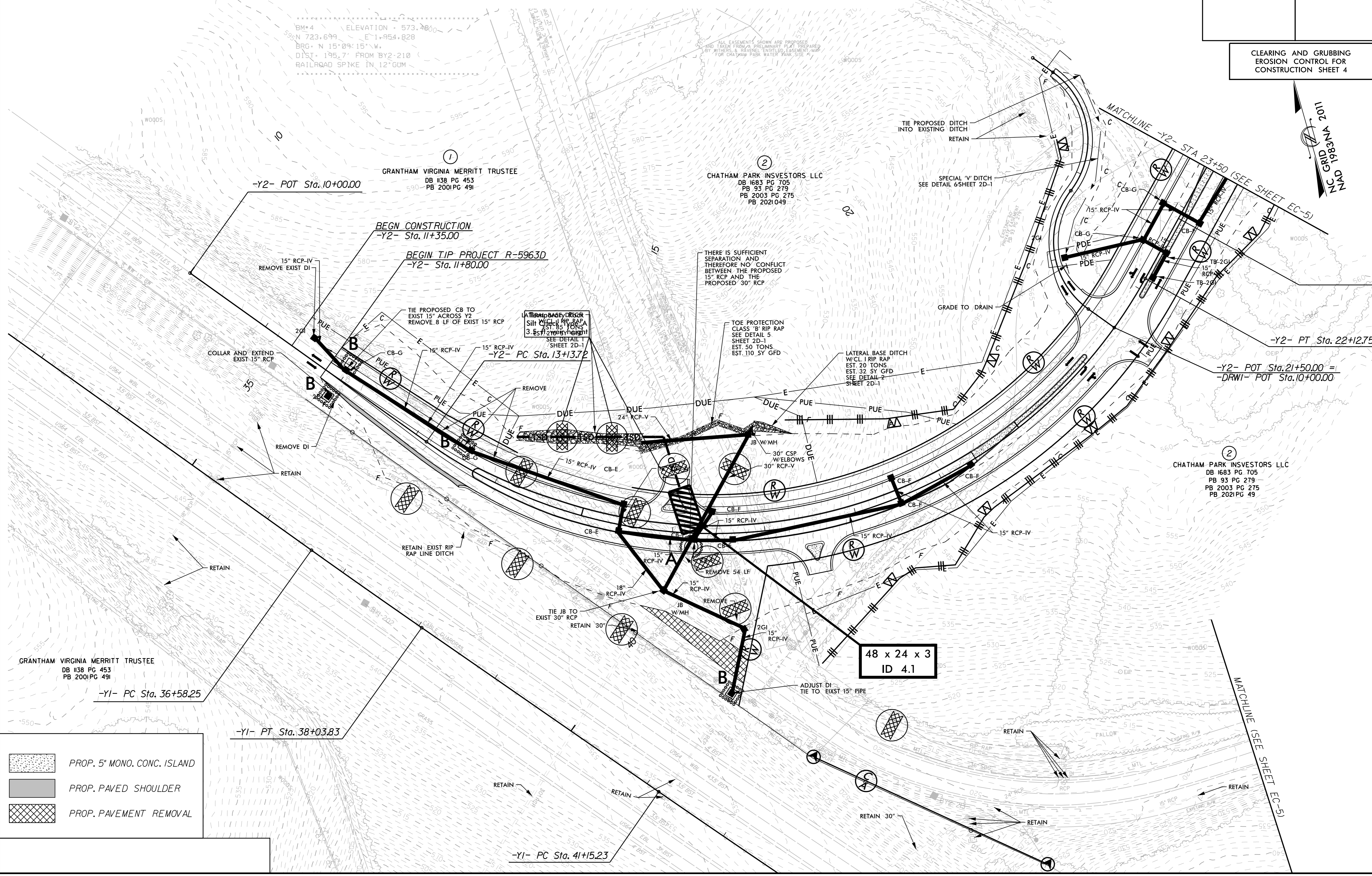
PROJECT REFERENCE NO.		SHEET NO.	
R-5963D		EC-4/CONST.4	
RW SHEET NO.		ROADWAY DESIGN ENGINEER	
ROADWAY DESIGN ENGINEER		HYDRAULICS ENGINEER	
RIGHT-OF-WAY REV.		CONST. REV.	

Kimley » Horn
421 FAYETTEVILLE STREET, SUITE 600
RALEIGH, NC 27601

CLEARING AND GRUBBING
EROSION CONTROL FOR
CONSTRUCTION SHEET 4



REVISIONS



	PROP. 5" MONO. CONC. ISLAND
	PROP. PAVED SHOULDER
	PROP. PAVEMENT REMOVAL

48 x 24 x 3
ID 4.1

5/14/99

NOTE:
PLACE TEMPORARY ROCK SEDIMENT DAMS TYPE - B
AND TEMPORARY ROCK SILT CHECKS TYPE - A AT
DRAINAGE OUTLETS.

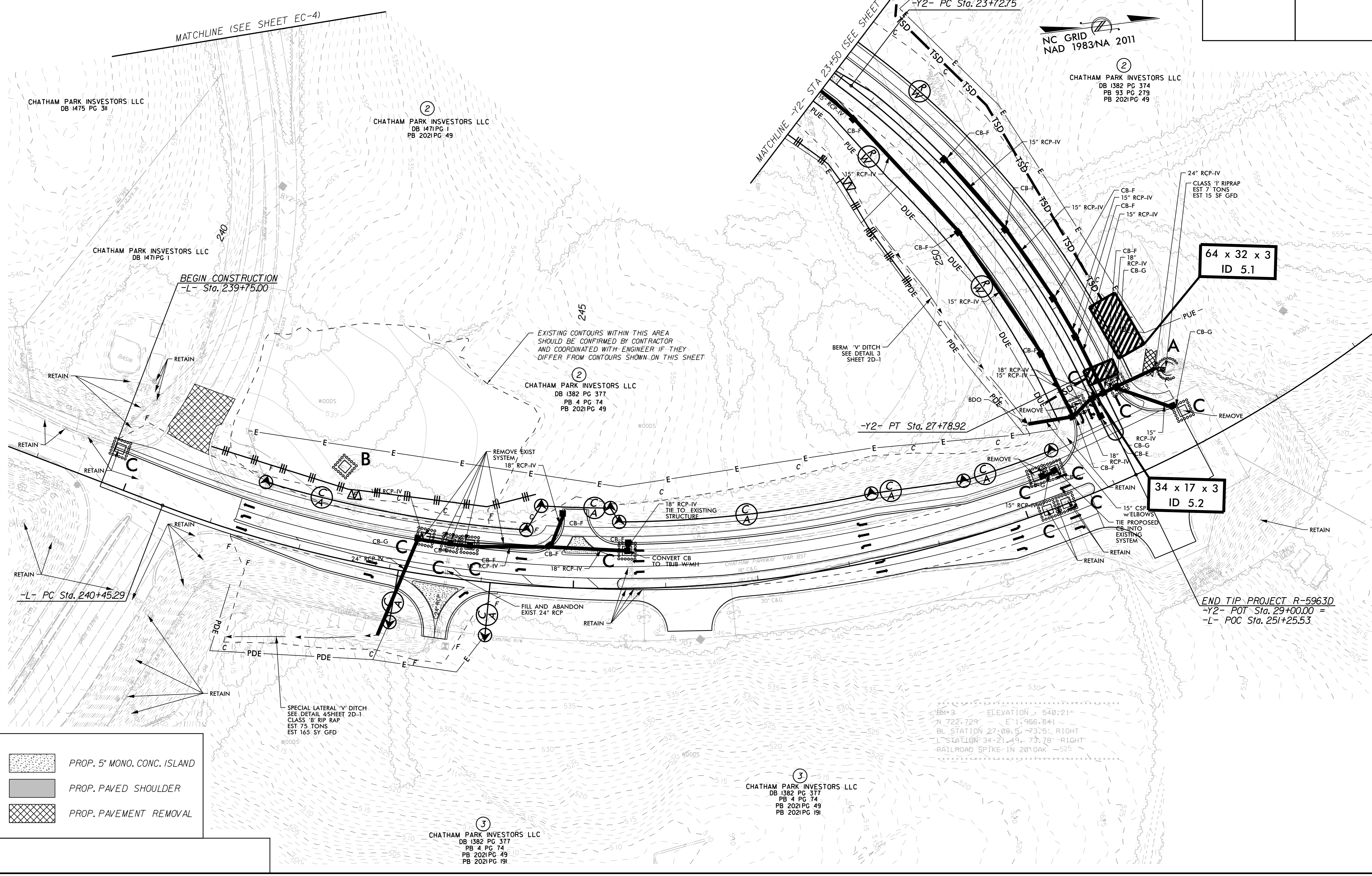
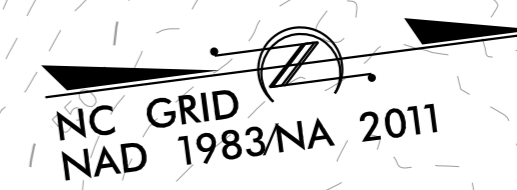
CLEARING AND GRUBBING
EROSION CONTROL FOR
CONSTRUCTION SHEET 5

Kimley > Horn

421 FAYETTEVILLE STREET, SUITE 600
RALEIGH, NC 27601

RIGHT-OF-WAY REV.
CONST. REV.

PROJECT REFERENCE NO. R-5963D	SHEET NO. EC-5/CONST.5
ROADWAY DESIGN ENGINEER	HYDRAULICS ENGINEER



	PROP. 5" MONO. CONC. ISLAND
	PROP. PAVED SHOULDER
	PROP. PAVEMENT REMOVAL

REVISIONS

64 x 32 x 3
ID 5.1

34 x 17 x 3
ID 5.2

EXISTING CONTOURS WITHIN THIS AREA
SHOULD BE CONFIRMED BY CONTRACTOR
AND COORDINATED WITH ENGINEER IF THEY
DIFFER FROM CONTOURS SHOWN ON THIS SHEET

BERM 'V' DITCH
SEE DETAIL 3
SHEET 2D-1

REMOVE EXIST
SYSTEM
18" RCP-IV

18" RCP-IV
TIE TO EXISTING
STRUCTURE

CONVERT CB
TO TBUB-W/WH

FILL AND ABANDON
EXIST 24" RCP

SPECIAL LATERAL 'V' DITCH
SEE DETAIL 4/SHEET 2D-1
CLASS 'B' RIP RAP
EST 75 TONS
EST 165 SY GFD

BM 3 ELEVATION = 540.21'
N 722.729' E 1,966.641'
BL STATION 27+08.5 - 73.5' RIGHT
L STATION 34+21.49 - 73.78' RIGHT
RAILROAD SPIKE IN 20' OAK - 525'

END TIP PROJECT R-5963D
-Y2- POT Sta. 29+00.00 =
-L- POC Sta. 251+25.53

CHATHAM PARK INVESTORS LLC
DB 1475 PG 311

CHATHAM PARK INVESTORS LLC
DB 1471 PG 1
PB 2021 PG 49

CHATHAM PARK INVESTORS LLC
DB 1471 PG 1

BEGIN CONSTRUCTION
-L- Sta. 239+75.00

CHATHAM PARK INVESTORS LLC
DB 1382 PG 377
PB 4 PG 74
PB 2021 PG 49

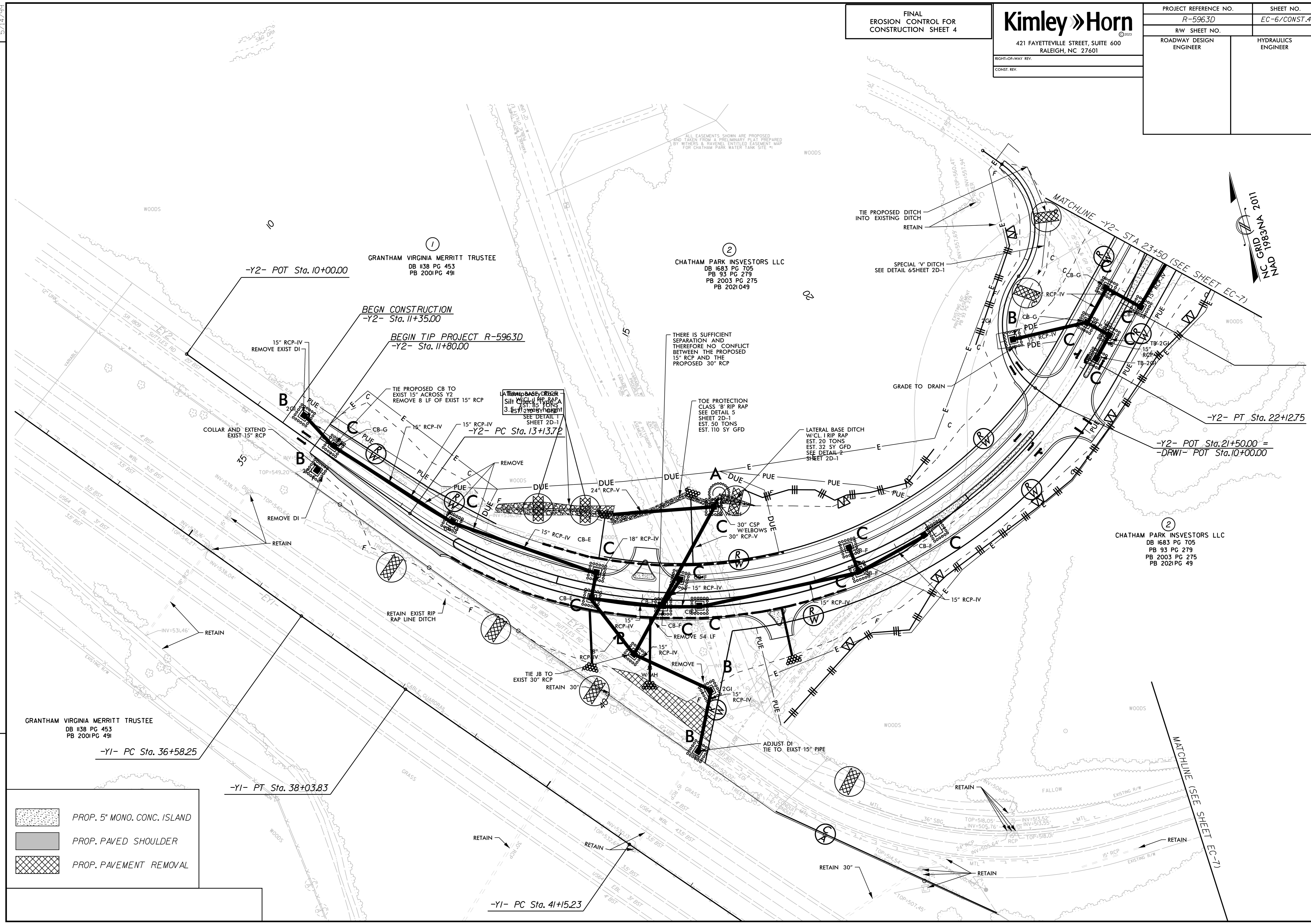
CHATHAM PARK INVESTORS LLC
DB 1382 PG 374
PB 93 PG 279
PB 2021 PG 49

CHATHAM PARK INVESTORS LLC
DB 1382 PG 377
PB 4 PG 74
PB 2021 PG 49
PB 2021 PG 191

CHATHAM PARK INVESTORS LLC
DB 1382 PG 377
PB 4 PG 74
PB 2021 PG 49
PB 2021 PG 191

PROJECT REFERENCE NO. <i>R-5963D</i>	SHEET NO. <i>EC-6/CONST.4</i>
RW SHEET NO.	HYDRAULICS ENGINEER
ROADWAY DESIGN ENGINEER	

REVISIONS



	PROP. 5" MONO. CONC. ISLAND
	PROP. PAVED SHOULDER
	PROP. PAVEMENT REMOVAL

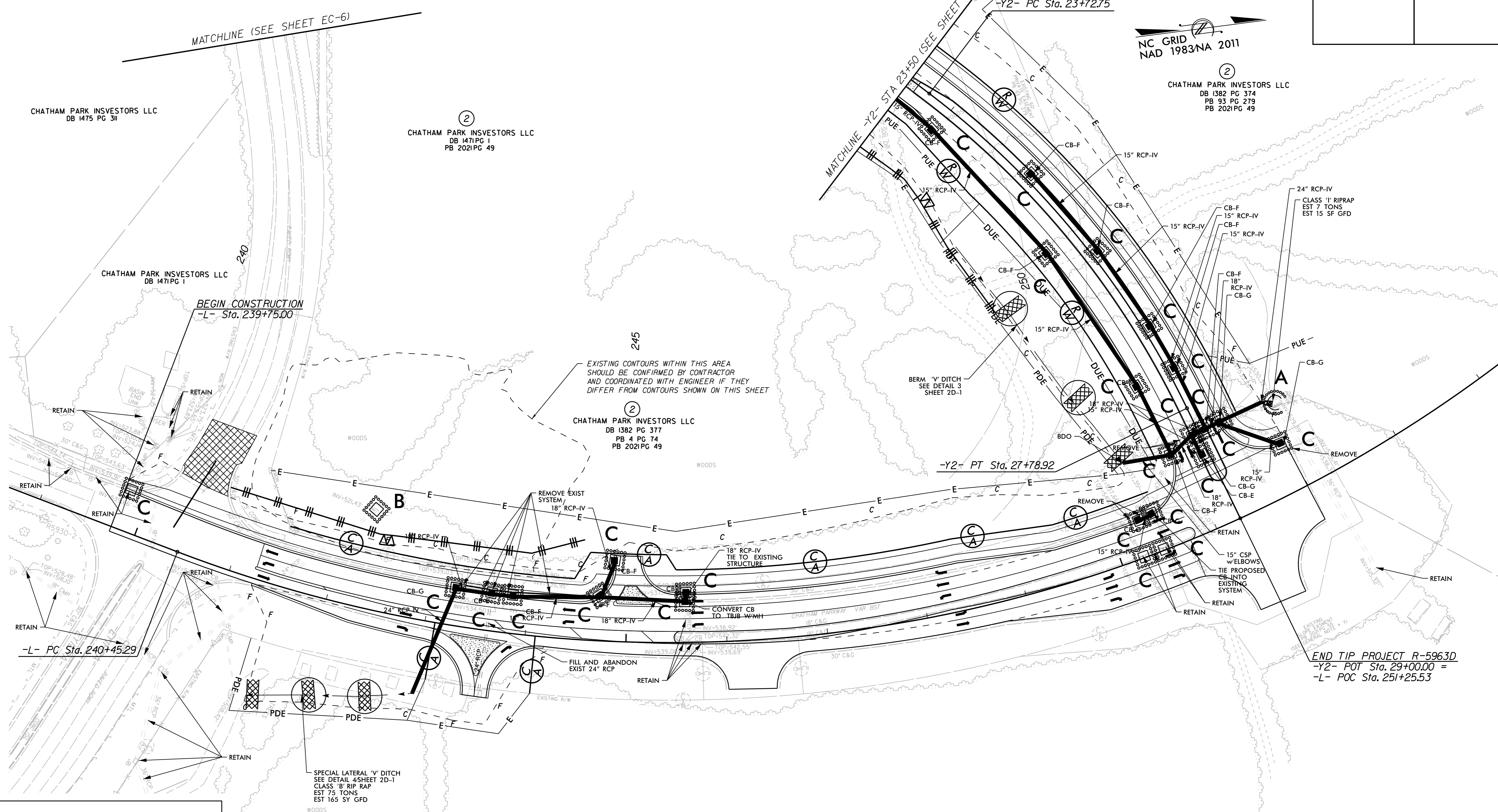
5/14/99

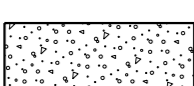

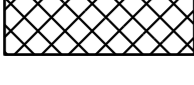


②
CHATHAM PARK INVESTORS LLC
DB 1382 PG 374
PB 93 PG 279
PB 2021 PG 49

5/14/99

REVISIONS



-  PROP. 5" MONO. CONC. ISLAND
-  PROP. PAVED SHOULDER
-  PROP. PAVEMENT REMOVAL

③
CHATHAM PARK INVESTORS LLC
DB 1382 PG 377
PB 4 PG 74
PB 2021 PG 49
PB 2021 PG 191

③
CHATHAM PARK INVESTORS LLC
DB 1382 PG 377
PB 4 PG 74
PB 2021 PG 49
PB 2021 PG 191

EXISTING CONTOURS WITHIN THIS AREA SHOULD BE CONFIRMED BY CONTRACTOR AND COORDINATED WITH ENGINEER IF THEY DIFFER FROM CONTOURS SHOWN ON THIS SHEET

REMOVE EXIST SYSTEM 18" RCP-IV

FILL AND ABANDON EXIST 24" RCP

CONVERT CB TO 18" RCP-IV

SPECIAL LATERAL 'V' DITCH SEE DETAIL 4 SHEET 2D-1 CLASS 'B' RIP RAP EST 75 TONS EST 165 SY GFD

BERM 'V' DITCH SEE DETAIL 3 SHEET 2D-1

15" CSP W/ ELBOWS TIE PROPOSED CB INTO EXISTING SYSTEM

END TIP PROJECT R-5963D
-Y2- POT Sta. 29+00.00 =
-L- POC Sta. 251+25.53