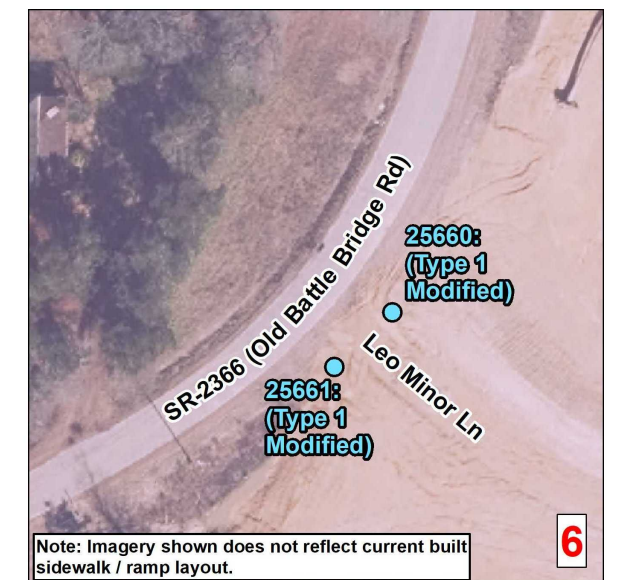
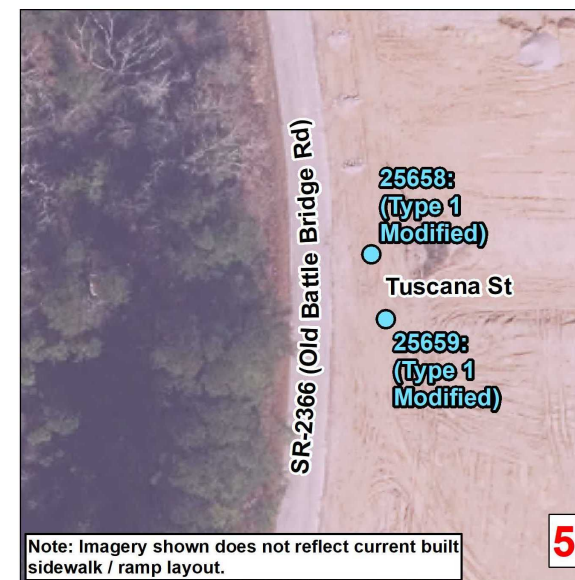
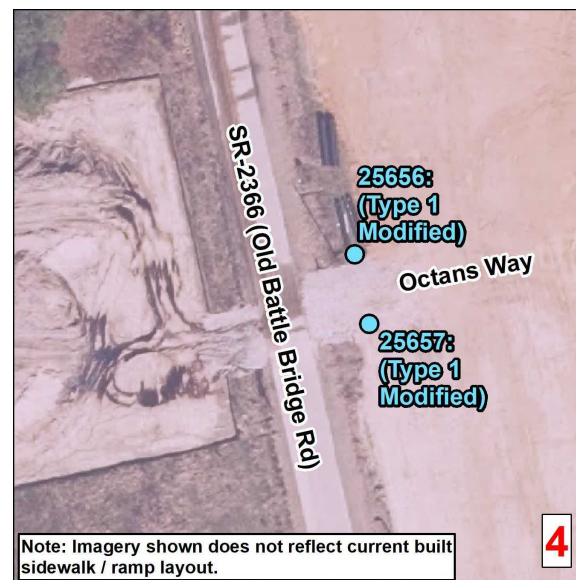
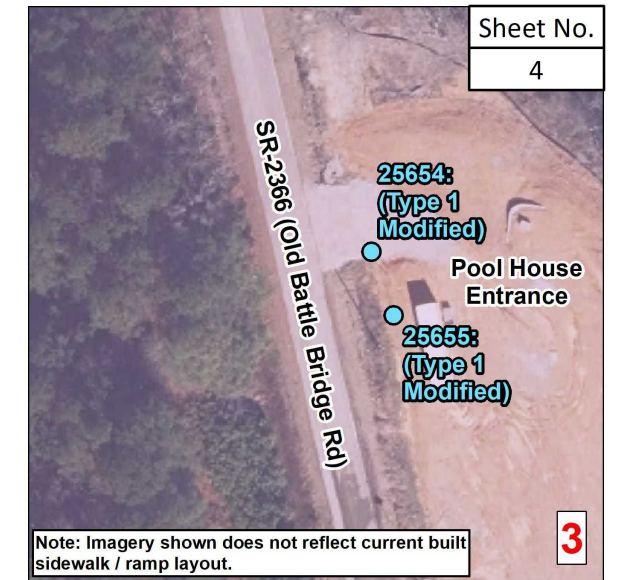
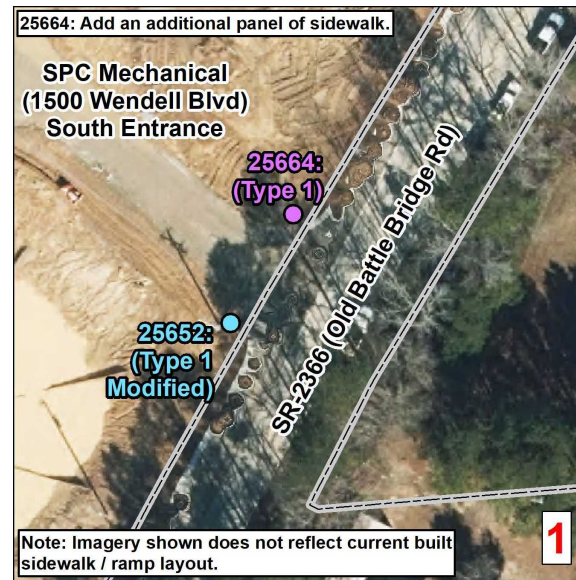
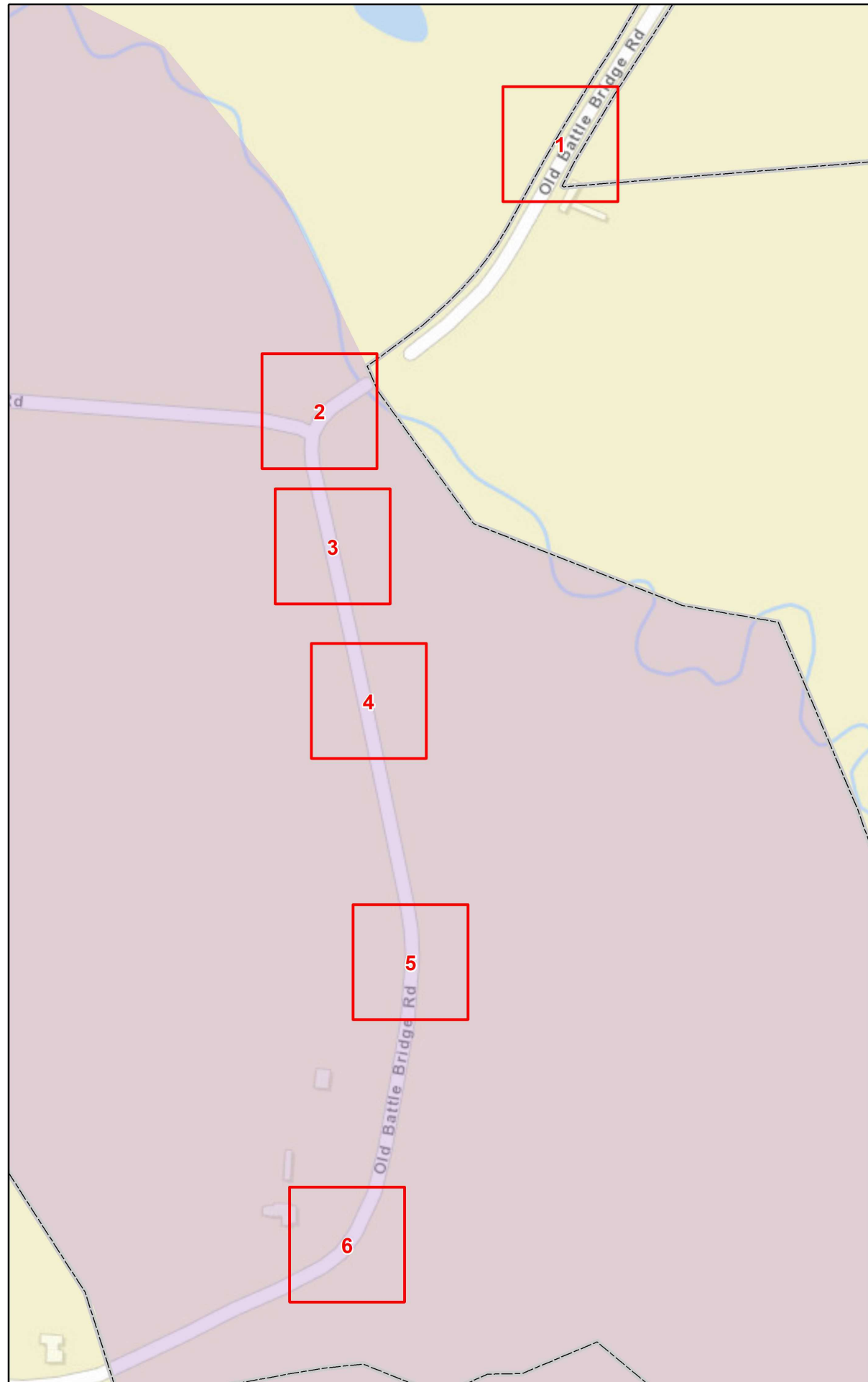


- 4. SR-2344 / N WHITLEY ST/CEMETARY RD
- 5. SR-2380 / E STRONACH AVE/N PRIVETTE ST
- 7. SR-2431 / HUNTDAL TR
- 33. SR-2457 / STAGHOUND TR
- 34. SR-2427 / HUNTSMAN TR
- 35. SR-2475 / HUNT RUN CIR
- 36. SR-2459 / STAGHOUND TR
- 43. SR-2429 / ENGLISH FOXHOUND TR
- 44. SR-2458 / BALUSTRADE CT



5/14/23



Curb Ramps To Be Repaired

- Retrofit
- Remove and Replace
- New Curb Ramp
- Remove Ramp
- Other

Municipal Boundary

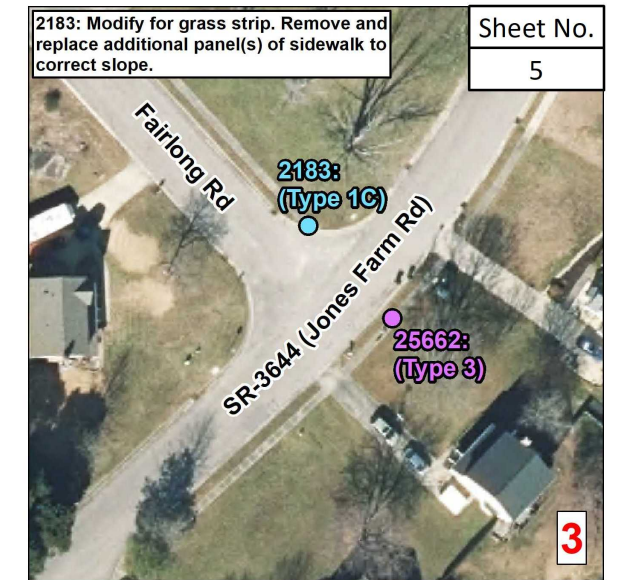
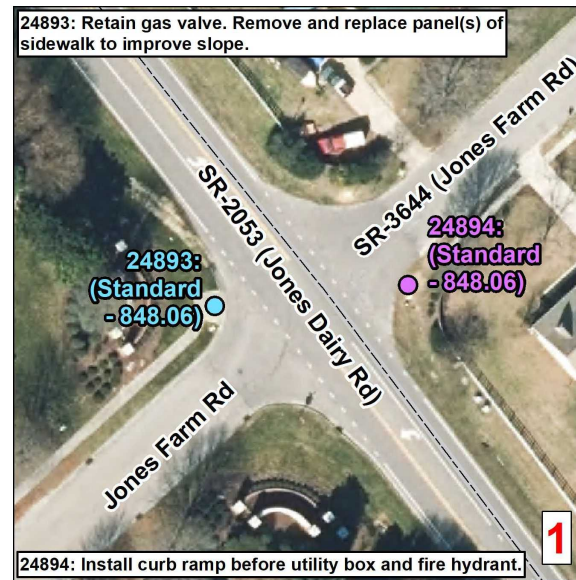
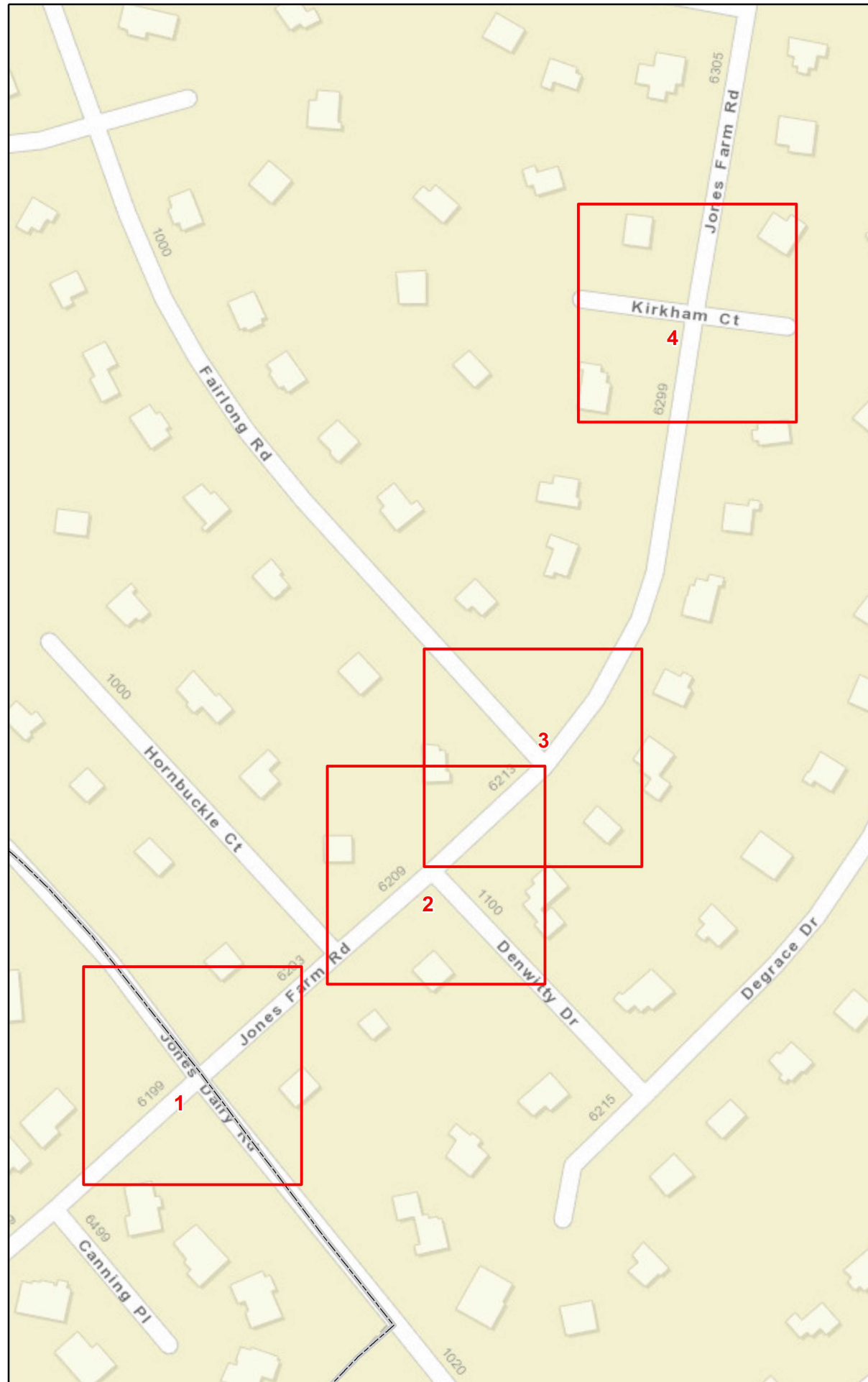
NCHPO Historic Boundary (NR and LHD)

East Wake
Project Number: 2024CPT.05.11.20921.1

Old Battle Bridge Rd
From BUS 64 To SR 1003

NORTH CAROLINA DEPARTMENT
OF TRANSPORTATION
DIVISION 5

Source: NV5 Engineers and Consultants Inc., ESRI, NC OneMap, NCDOT, NCHPO



Curb Ramps To Be Repaired

- Retrofit
- Remove and Replace
- New Curb Ramp
- Remove Ramp
- Other

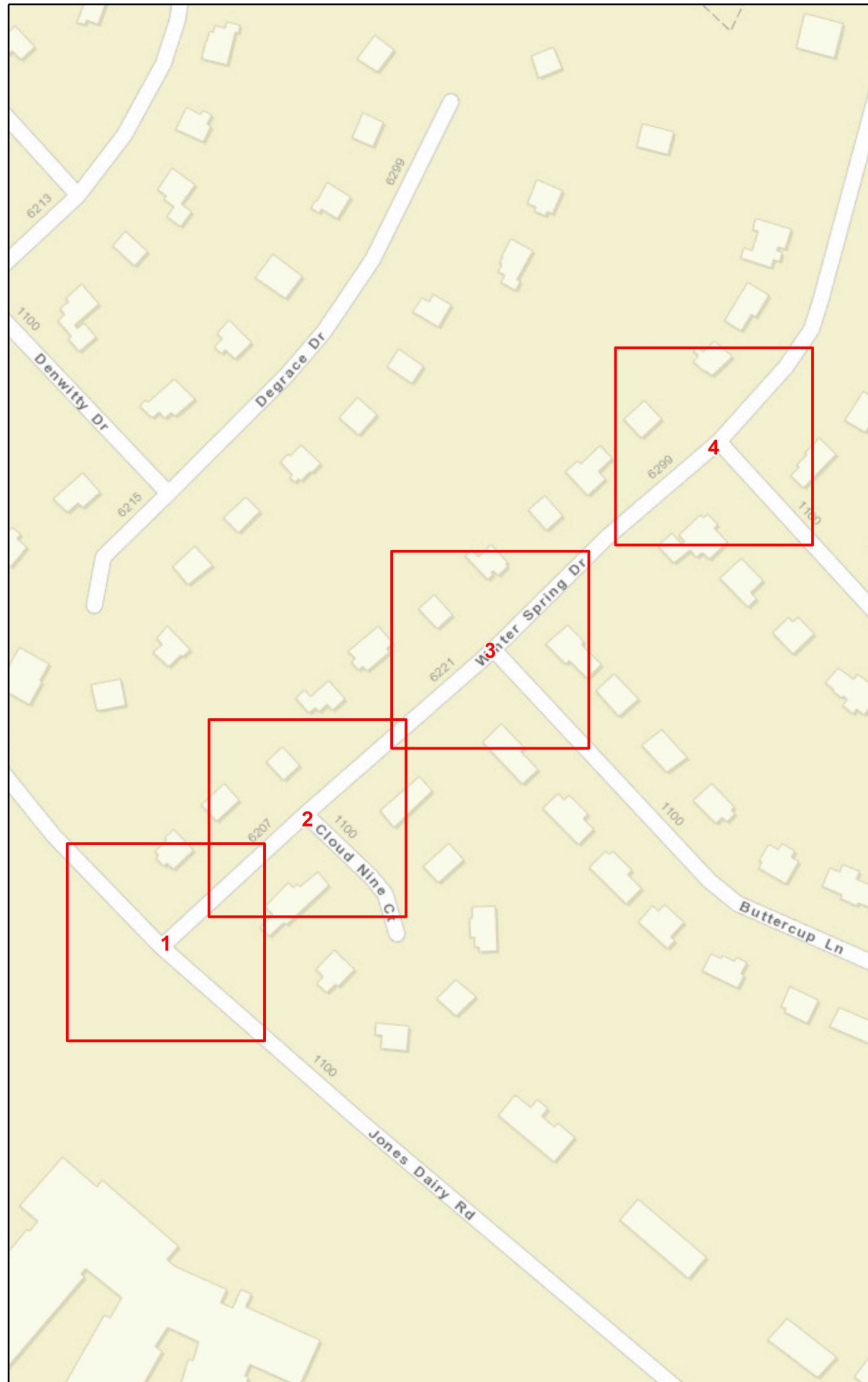
Municipal Boundary

NCHPO Historic Boundary (NR and LHD)

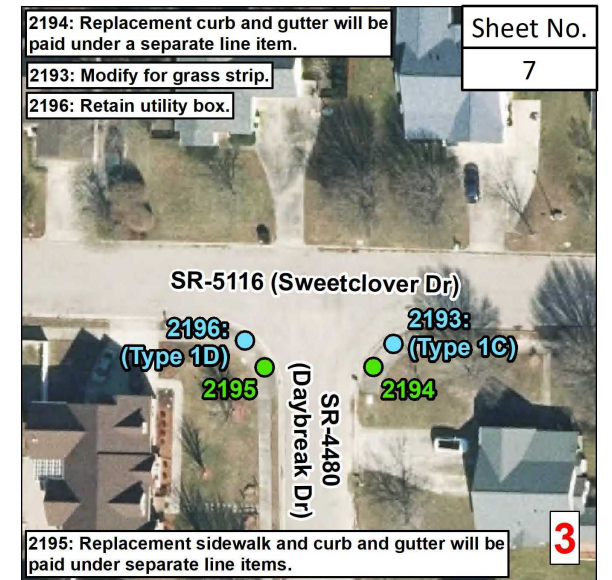
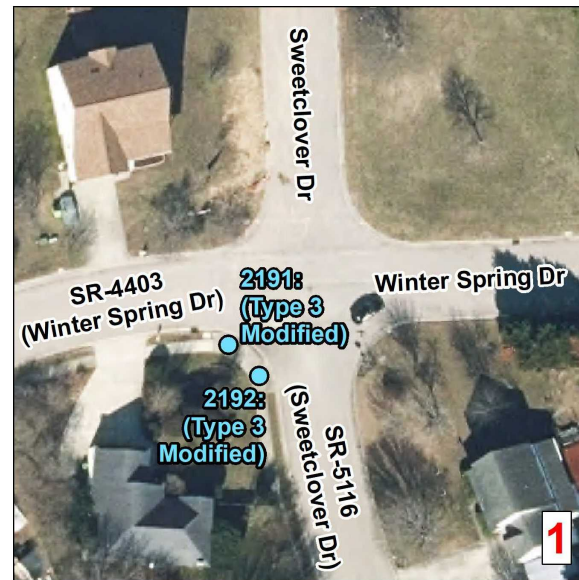
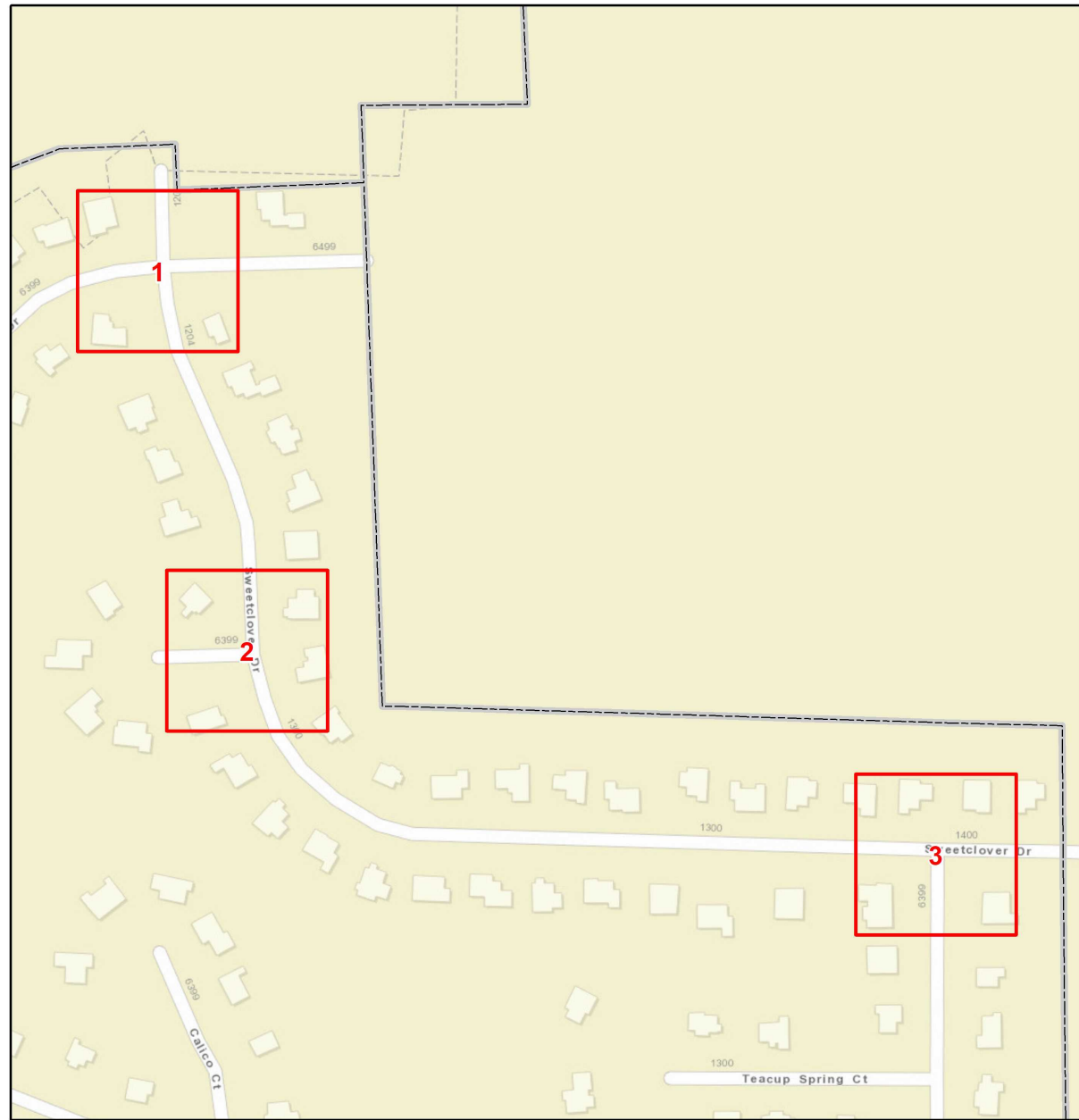
East Wake
Project Number: 2024CPT.05.11.20921.1
Jones Farm Rd
From SR 2053 To Cul-de-sac

NORTH CAROLINA DEPARTMENT OF TRANSPORTATION
DIVISION 5

Source: NV5 Engineers and Consultants Inc., ESRI, NC OneMap, NCDOT, NCHPO



Curb Ramps To Be Repaired <ul style="list-style-type: none"> ● Retrofit ● Remove and Replace ● New Curb Ramp ● Remove Ramp ■ Other 		
<ul style="list-style-type: none"> Municipal Boundary NCHPO Historic Boundary (NR and LHD) 		
<p>East Wake Project Number: 2024CPT.05.11.20921.1 Winter Spring Dr From SR 2053 To SR 5116</p>		
<p>NORTH CAROLINA DEPARTMENT OF TRANSPORTATION DIVISION 5</p>		
<p>Source: NV5 Engineers and Consultants Inc., ESRI, NC OneMap, NCDOT, NCHPO</p>		



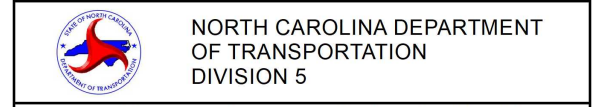
Curb Ramps To Be Repaired

- Retrofit
- Remove and Replace
- New Curb Ramp
- Remove Ramp
- Other

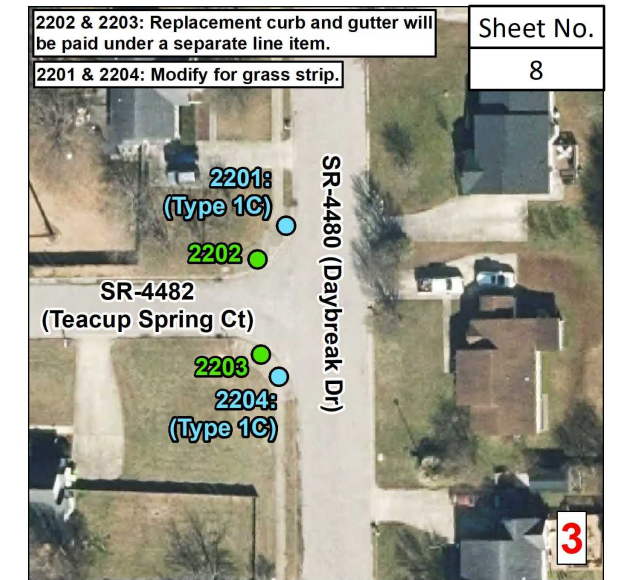
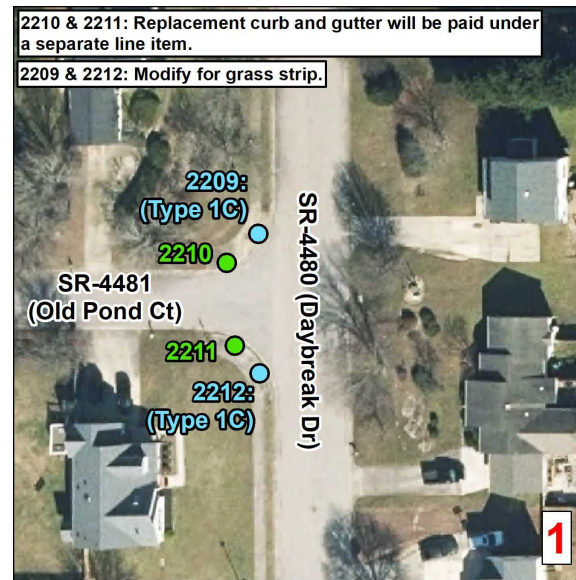
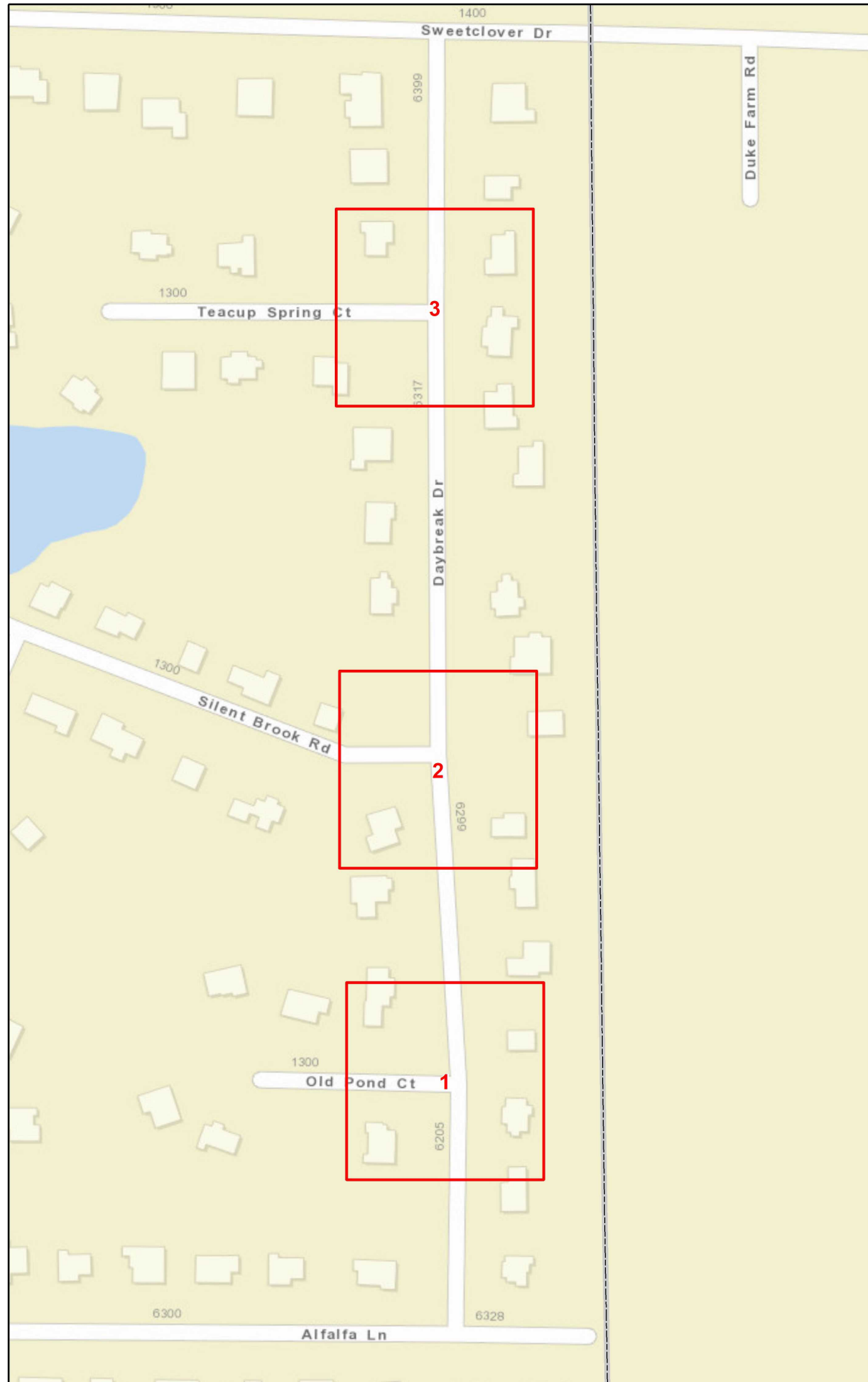
Municipal Boundary
 NCHPO Historic Boundary (NR and LHD)



East Wake
Project Number: 2024CPT.05.11.20921.1
Sweetclover Dr
From SR 4403 To END MAINT



Source: NV5 Engineers and Consultants Inc., ESRI, NC OneMap, NCDOT, NCHPO



Curb Ramps To Be Repaired

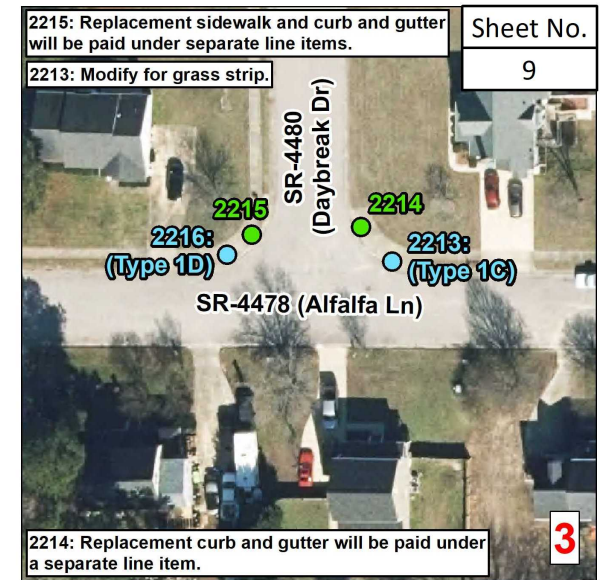
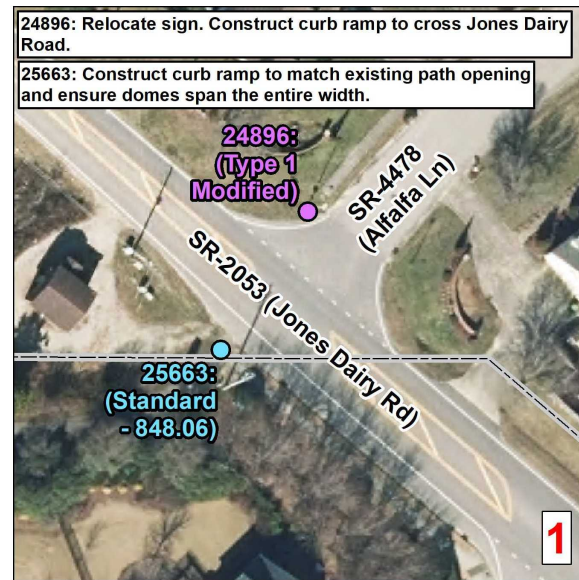
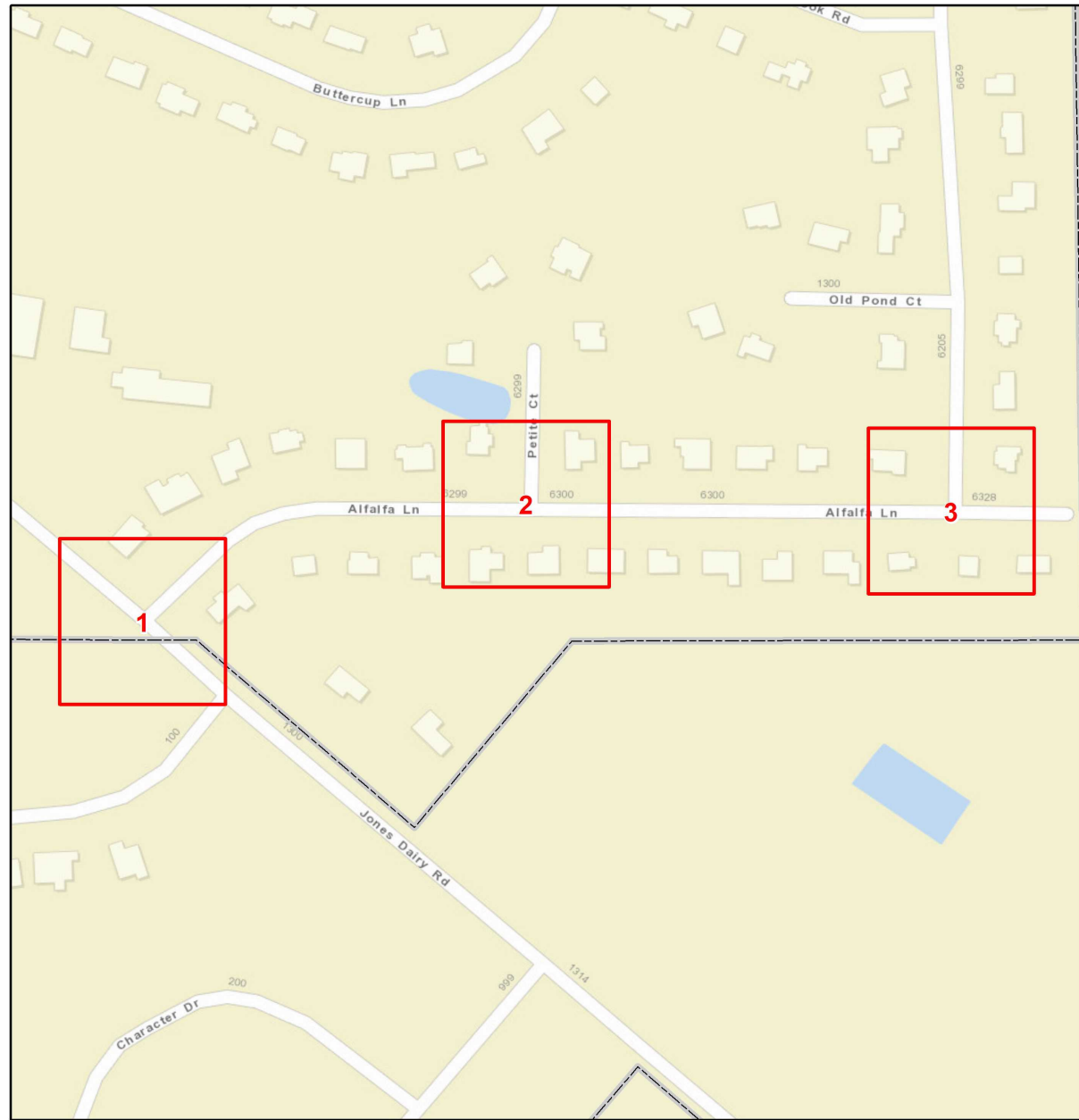
- Retrofit
- Remove and Replace
- New Curb Ramp
- Remove Ramp
- Other

Municipal Boundary
 NCHPO Historic Boundary (NR and LHD)

East Wake
Project Number: 2024CPT.05.11.20921.1
Daybreak Dr
From SR 4478 To SR 5116

NORTH CAROLINA DEPARTMENT
 OF TRANSPORTATION
 DIVISION 5

Source: NV5 Engineers and Consultants Inc., ESRI, NC OneMap, NCDOT, NCHPO



Curb Ramps To Be Repaired

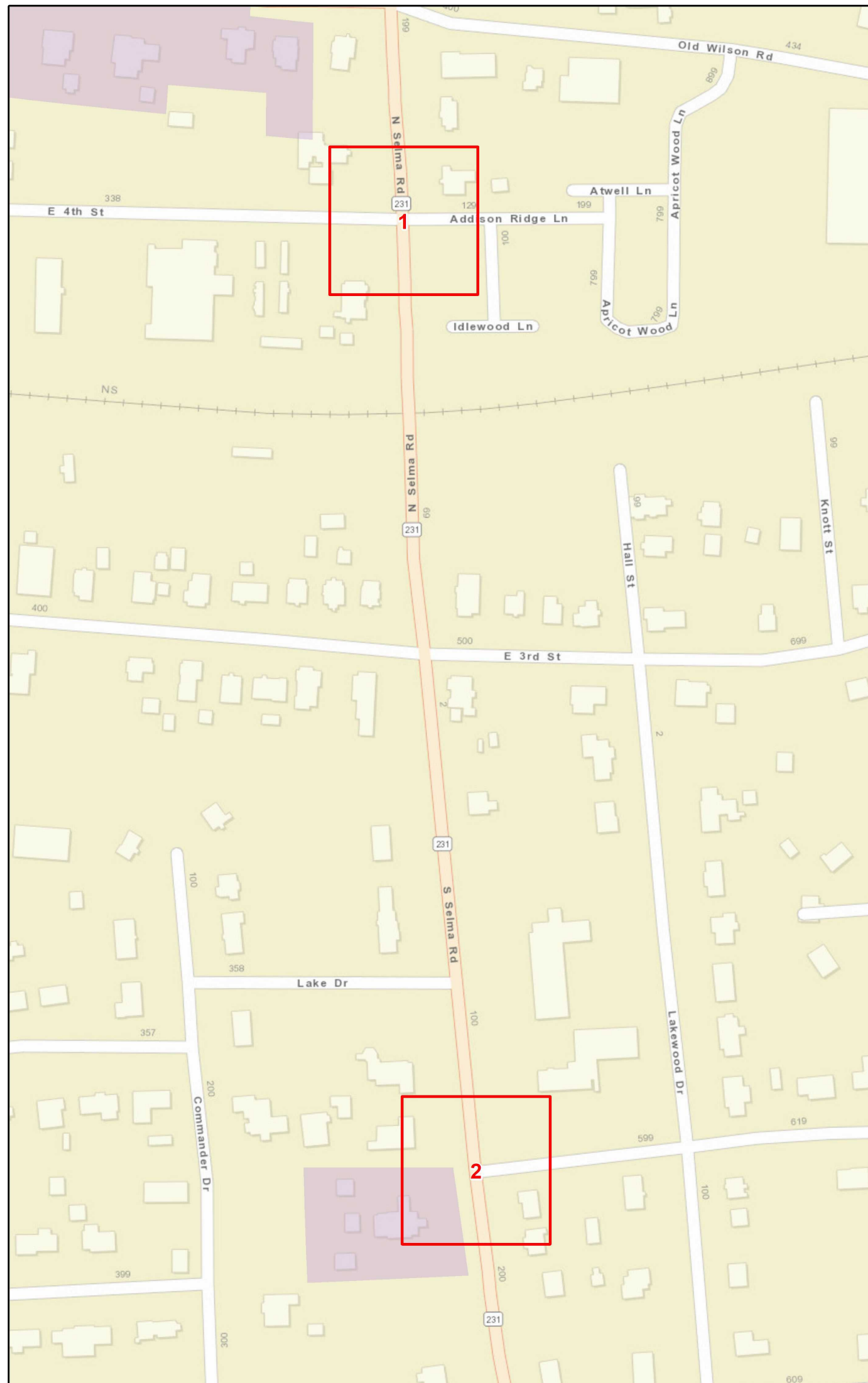
- Retrofit
- Remove and Replace
- New Curb Ramp
- Remove Ramp
- Other

Municipal Boundary
 NCHPO Historic Boundary (NR and LHD)

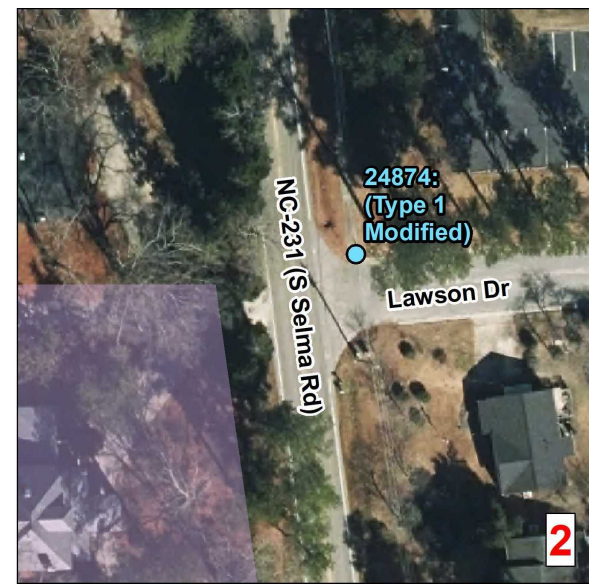
East Wake
Project Number: 2024CPT.05.11.20921.1
Alfalfa Ln
From SR 2053 To Dead End

NORTH CAROLINA DEPARTMENT
 OF TRANSPORTATION
 DIVISION 5

Source: NV5 Engineers and Consultants Inc., ESRI, NC OneMap, NCDOT, NCHPO



Note: Imagery shown does not fully reflect current built sidewalk / ramp layout.



Curb Ramps To Be Repaired

- Retrofit
- Remove and Replace
- New Curb Ramp
- Remove Ramp
- Other

Municipal Boundary
 NCHPO Historic Boundary (NR and LHD)



East Wake
Project Number: 2024CPT.05.11.10921.1
NC 231
From US 64 Bus To Johnston County



NORTH CAROLINA DEPARTMENT
 OF TRANSPORTATION
 DIVISION 5

Source: NV5 Engineers and Consultants Inc., ESRI, NC OneMap, NCDOT, NCHPO

PAVEMENT SCHEDULE

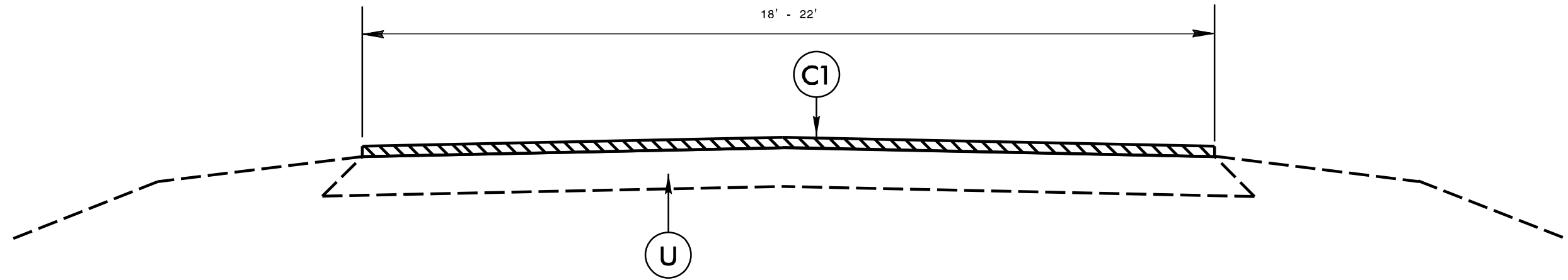
PROJECT REFERENCE NO.

SHEET NO.

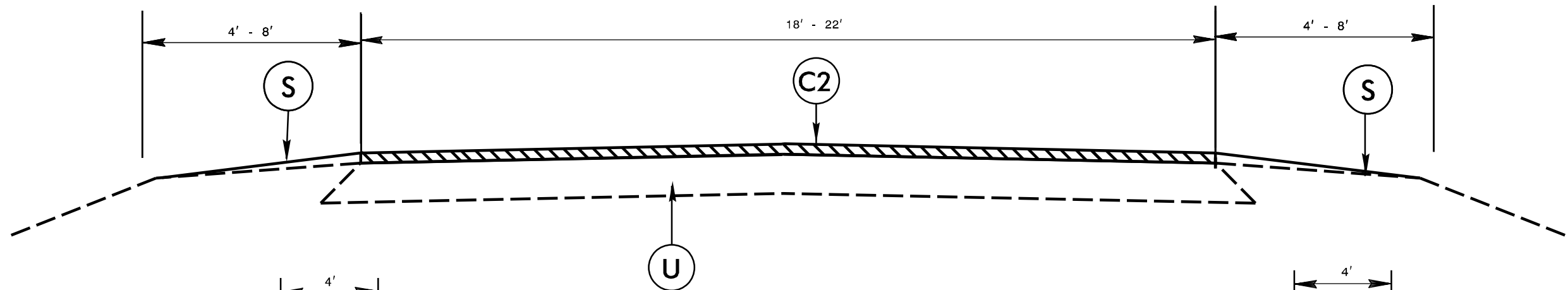
2024CPT.05.II.10921.I, ETC.

II

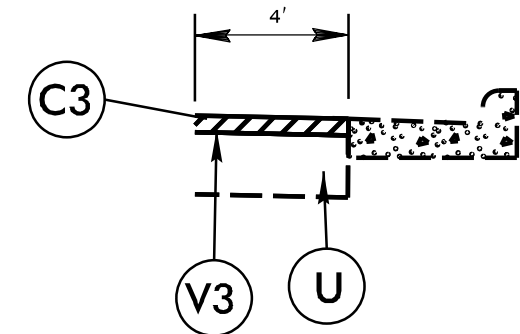
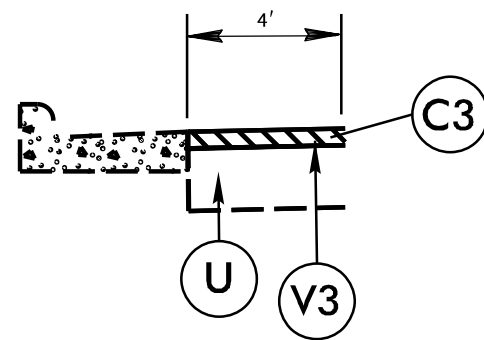
C1	1" ASPHALT CONCRETE SURFACE COURSE, TYPE S9.5B, AT AN AVERAGE RATE OF 110 LBS. PER SQ. YD.	U	EXISTING PAVEMENT
C2	1 1/4" ASPHALT CONCRETE SURFACE COURSE, TYPE S9.5B, AT AN AVERAGE RATE OF 137.5 LBS. PER SQ. YD.	V1	1 1/2" MILLING
C3	1 1/2" ASPHALT CONCRETE SURFACE COURSE, TYPE S9.5B, AT AN AVERAGE RATE OF 165 LBS. PER SQ. YD.	V2	0" - 1 1/2" MILLING
		V3	0" - 1 1/4" MILLING



TYPICAL SECTION NO. 1



TYPICAL SECTION NO. 2



* SHOULDER RECONSTRUCTION ONLY ON MAP #4

*USE 0" - 1 1/4" MILLING ONLY ON MAP 4

PAVEMENT SCHEDULE

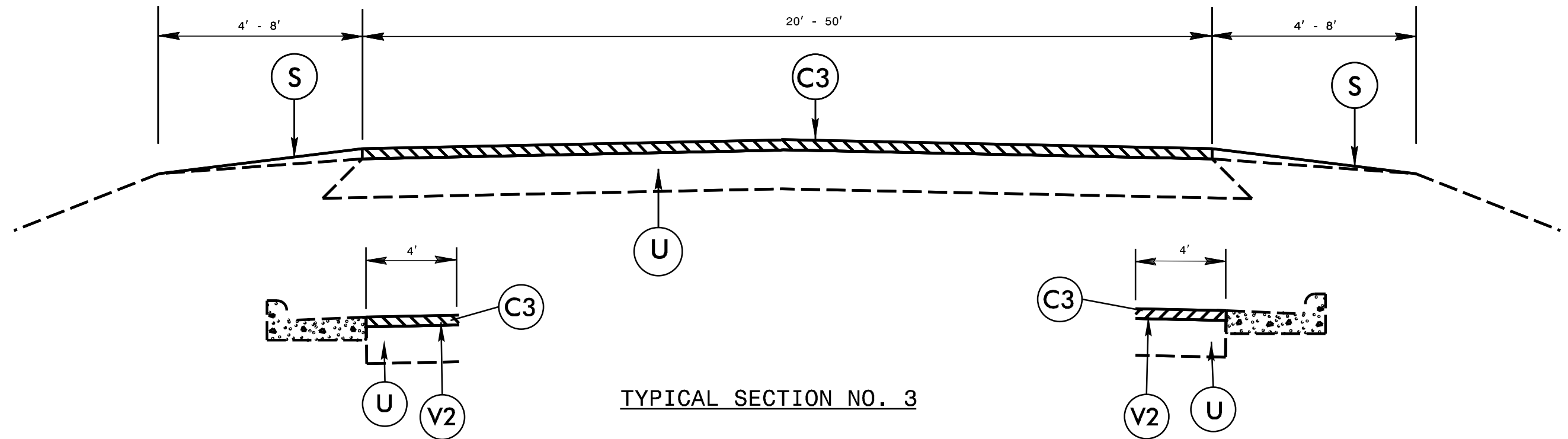
		S	SHOULDER RECONSTRUCTION
C1	1" ASPHALT CONCRETE SURFACE COURSE, TYPE S9.5B, AT AN AVERAGE RATE OF 110 LBS. PER SQ. YD.	U	EXISTING PAVEMENT
C2	1 1/4" ASPHALT CONCRETE SURFACE COURSE, TYPE S9.5B, AT AN AVERAGE RATE OF 137.5 LBS. PER SQ. YD.	V1	1 1/2" MILLING
C3	1 1/2" ASPHALT CONCRETE SURFACE COURSE, TYPE S9.5B, AT AN AVERAGE RATE OF 165 LBS. PER SQ. YD.	V2	0" - 1 1/2" MILLING
		V3	0" - 1 1/4" MILLING

PROJECT REFERENCE NO.

SHEET NO.

2024CPT.05.11.10921.1, ETC.

12



TYPICAL SECTION NO. 3

* SHOULDER RECONSTRUCTION ONLY ON MAP #1 & 6

* USE 0" - 1 1/2" MILLING ONLY ON MAP #1 & 6

* MILL & FILL +/- 1 1/2" ON BRIDGE NUMBER 0174,0034 & 0216
MAP #1, 3, & 6 TO PREVENT ADDITIONAL WEIGHT AS DIRECTED BY THE ENGINEER.

PAVEMENT SCHEDULE

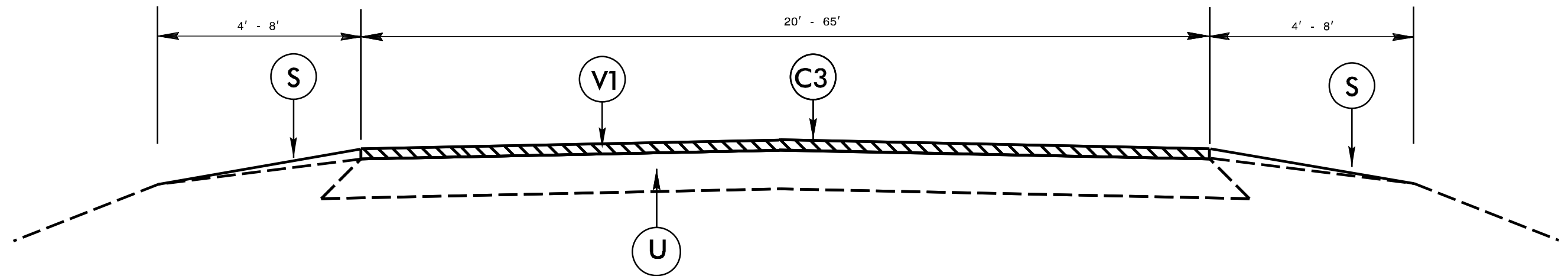
PROJECT REFERENCE NO.

SHEET NO.

2024CPT.05.11.10921.1, ETC.

13

C1	1" ASPHALT CONCRETE SURFACE COURSE, TYPE S9.5B, AT AN AVERAGE RATE OF 110 LBS. PER SQ. YD.	U	EXISTING PAVEMENT
C2	1 1/4" ASPHALT CONCRETE SURFACE COURSE, TYPE S9.5B, AT AN AVERAGE RATE OF 137.5 LBS. PER SQ. YD.	V1	1 1/2" MILLING
C3	1 1/2" ASPHALT CONCRETE SURFACE COURSE, TYPE S9.5B, AT AN AVERAGE RATE OF 165 LBS. PER SQ. YD.	V2	0" - 1 1/2" MILLING
		V3	0" - 1 1/4" MILLING
		S	SHOULDER RECONSTRUCTION



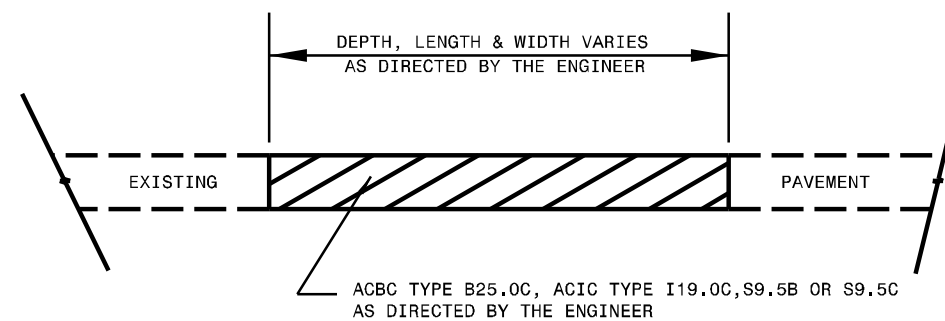
* SHOULDER RECONSTRUCTION ONLY ON MAP # 2

* REMOVE AND REPLACE 2'- 6" C&G ON MAP #8 AT STA 5+30-5+45 AND AT STA 6+10-6+25

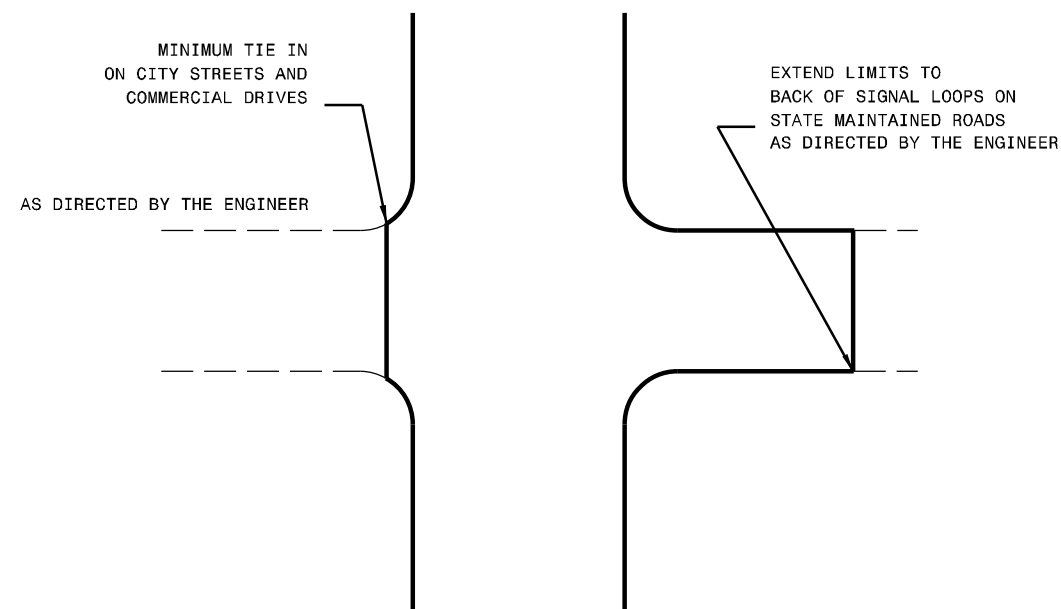
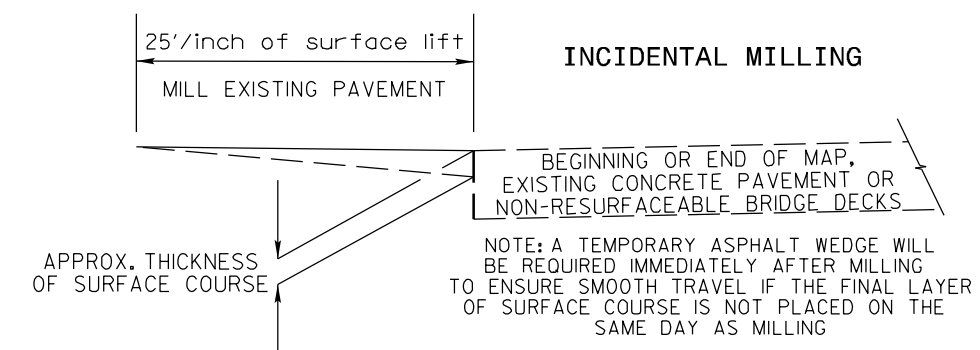
TYPICAL SECTION NO. 4

NOTES

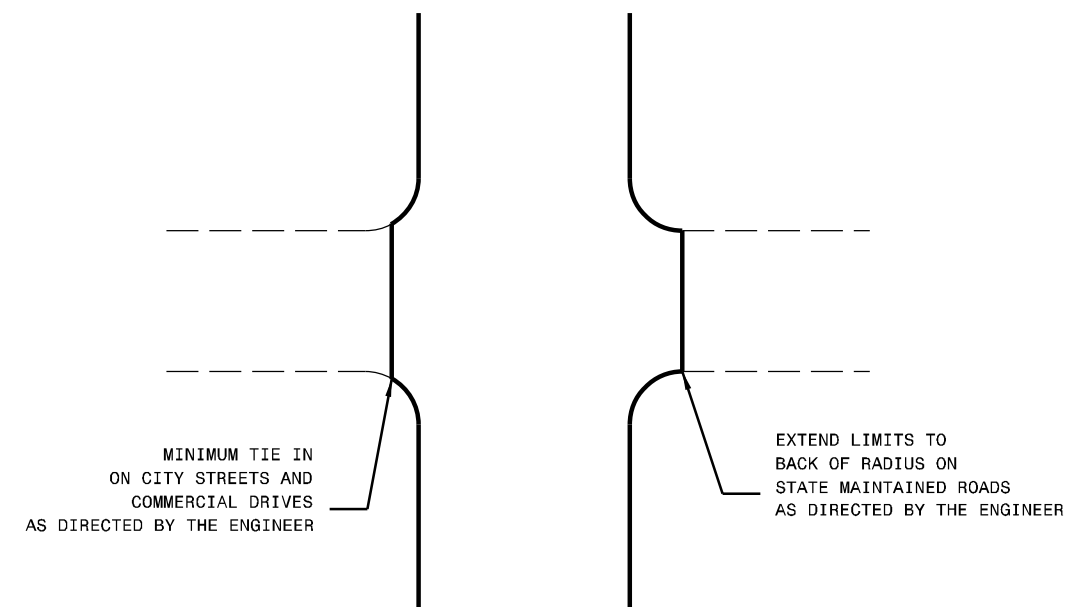
ALL UNPAVED S.R. ROADS TO BE RESURFACED 50' FROM EDGE OF PAVEMENT OF MAIN PROJECT
ALL PAVED S.R. ROADS TO BE RESURFACED TO THE ENDS OF THE RADI, OR AS DIRECTED BY THE ENGINEER.
EDGES, PAVEMENT WIDENING, INTERSECTIONS AND BRIDGE FLARES ARE INCLUDED IN THE TABLE OF QUANTITIES.
BRIDGES TO BE RESURFACED AT LOCATIONS AND TO DEPTH AS DIRECTED BY THE ENGINEER.



PATCHING EXISTING PAVEMENT
MILLING TO BE PERFORMED PRIOR TO PATCHING



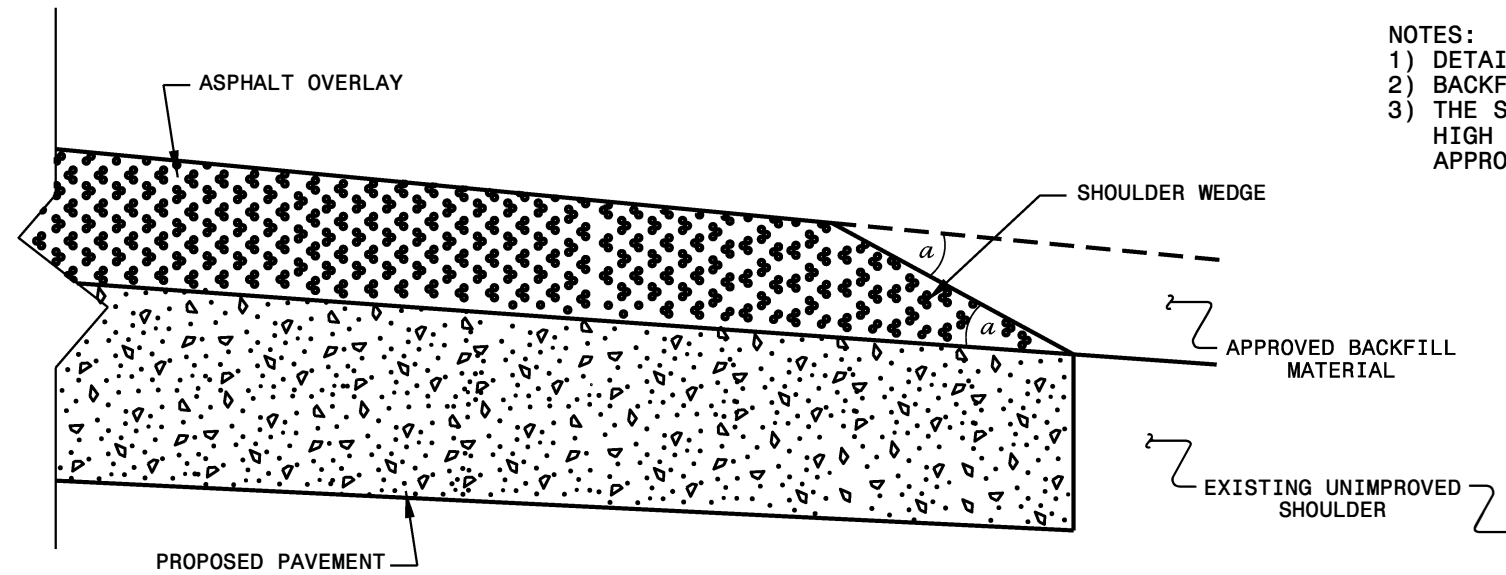
DETAIL OF PROJECT LIMITS AT SIGNALIZED Y LINES



DETAIL OF PROJECT LIMITS AT UNSIGNALIZED Y LINES

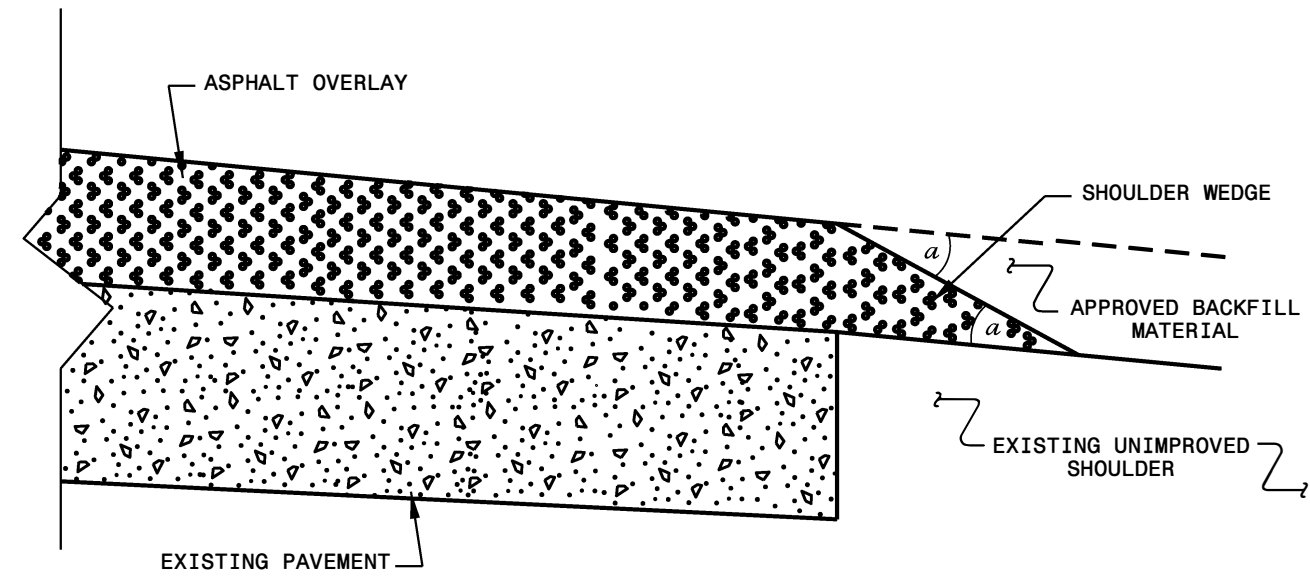
NOTES:

- 1) DETAIL DOES NOT APPLY TO OGAFB AND ULTRA-THIN BONDED WEARING COURSE.
- 2) BACKFILL SHOULDER WITH APPROVED MATERIAL.
- 3) THE SHOULDER WEDGE DEVICE MAY BE DISENGAGED AT PAVED DRIVEWAYS, SIDE STREETS, HIGH SHOULDERS, AND OTHER LOCATIONS NOT FEASIBLE TO CONSTRUCT AS APPROVED BY THE ENGINEER.



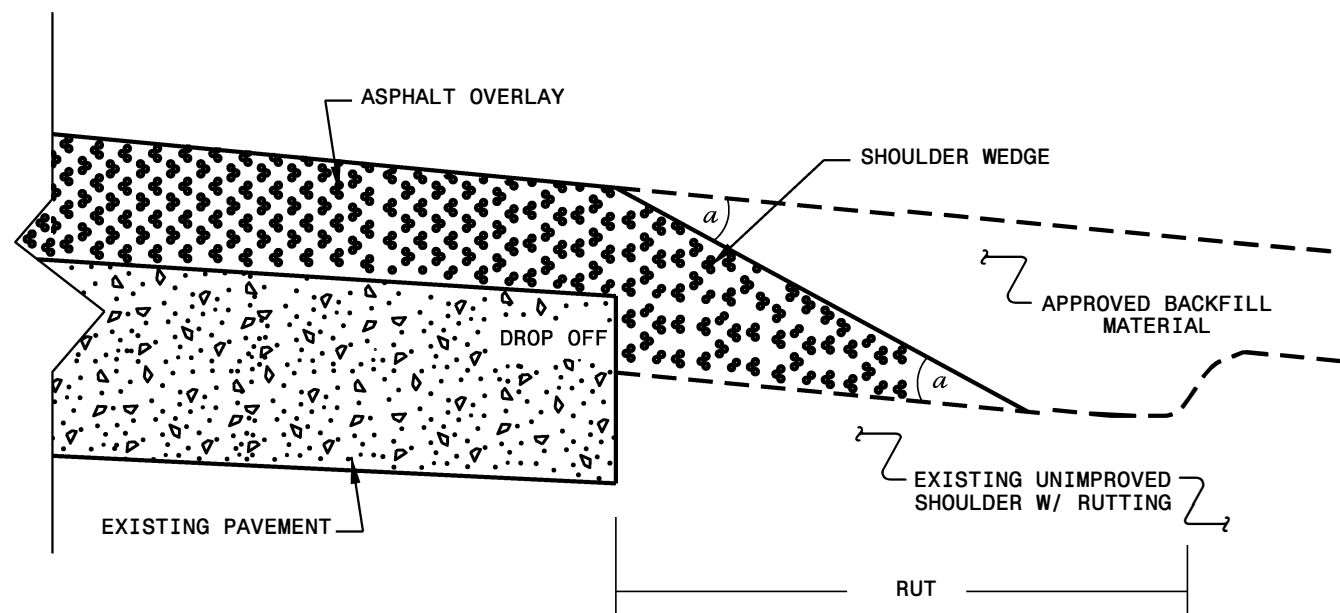
SHOULDER WEDGE DETAIL

(Resurfacing Projects w/ Widening or with Existing Paved Shoulder having no dropoffs)



SHOULDER WEDGE DETAIL

(Resurfacing Projects w/ NO Widening)



SHOULDER WEDGE DETAIL

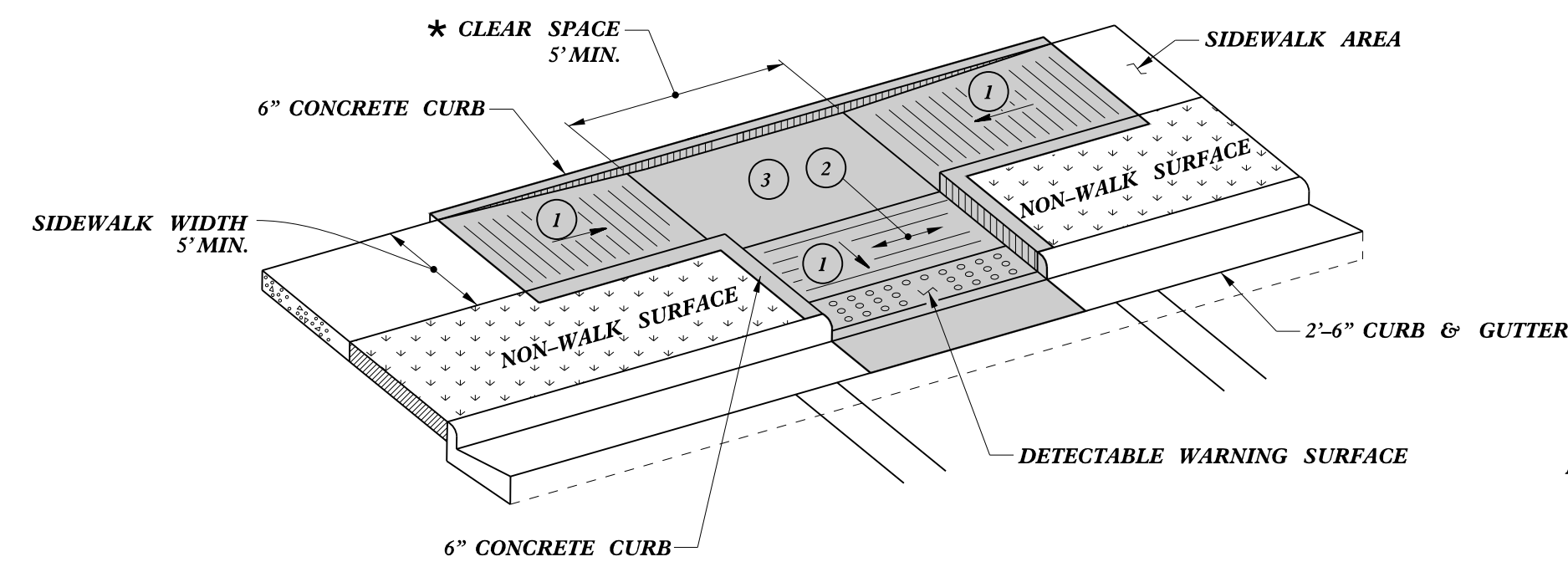
(Resurfacing Adjacent to Rutted Shoulder)

- SHOULDER WEDGE ANGLE = 30°

CONTRACT STANDARDS AND DEVELOPMENT UNIT	
Office 919-707-6950	FAX 919-250-4119
SHOULDER WEDGE DETAILS	
ORIGINAL BY: T.SPELL	DATE: 7-19-11
MODIFIED BY: _____	DATE: 2/2/16
CHECKED BY: _____	DATE: _____
FILE SPEC.: s:\usr\details\stand\shoulderwedgedetail.dgn	

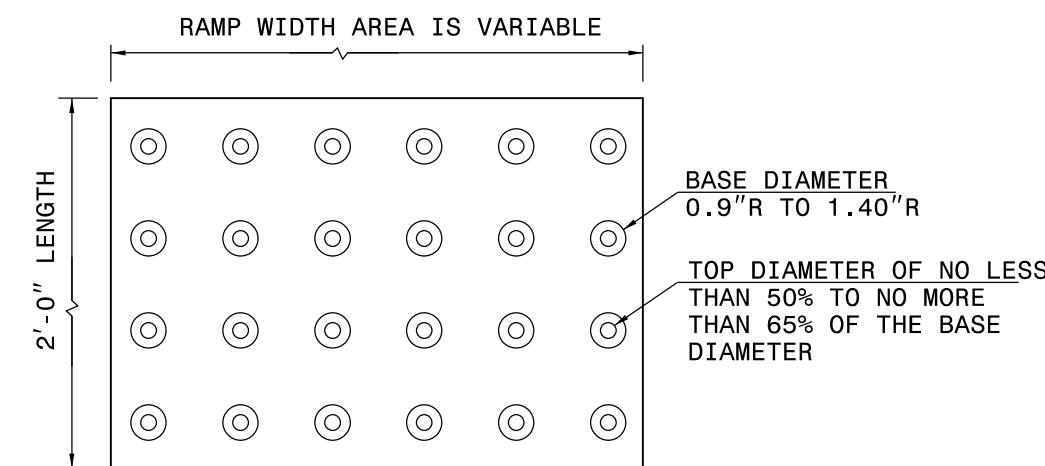
22 JAN 2016 09:41
 S:\projects\Resurfacing Projects\Division 4\1-5937 Wilson March 2016\Revised Shoulder Wedge Detail.dgn
 P:\corporate\1-5937\2016\20160512

* - WHERE CLEAR SPACE IS CONSTRAINED ON TWO OR MORE SIDES, THE CLEAR SPACE SHALL BE 4' MINIMUM X 5' MINIMUM, WITH 5' PROVIDED IN THE DIRECTION OF THE PEDESTRIAN STREET CROSSING.

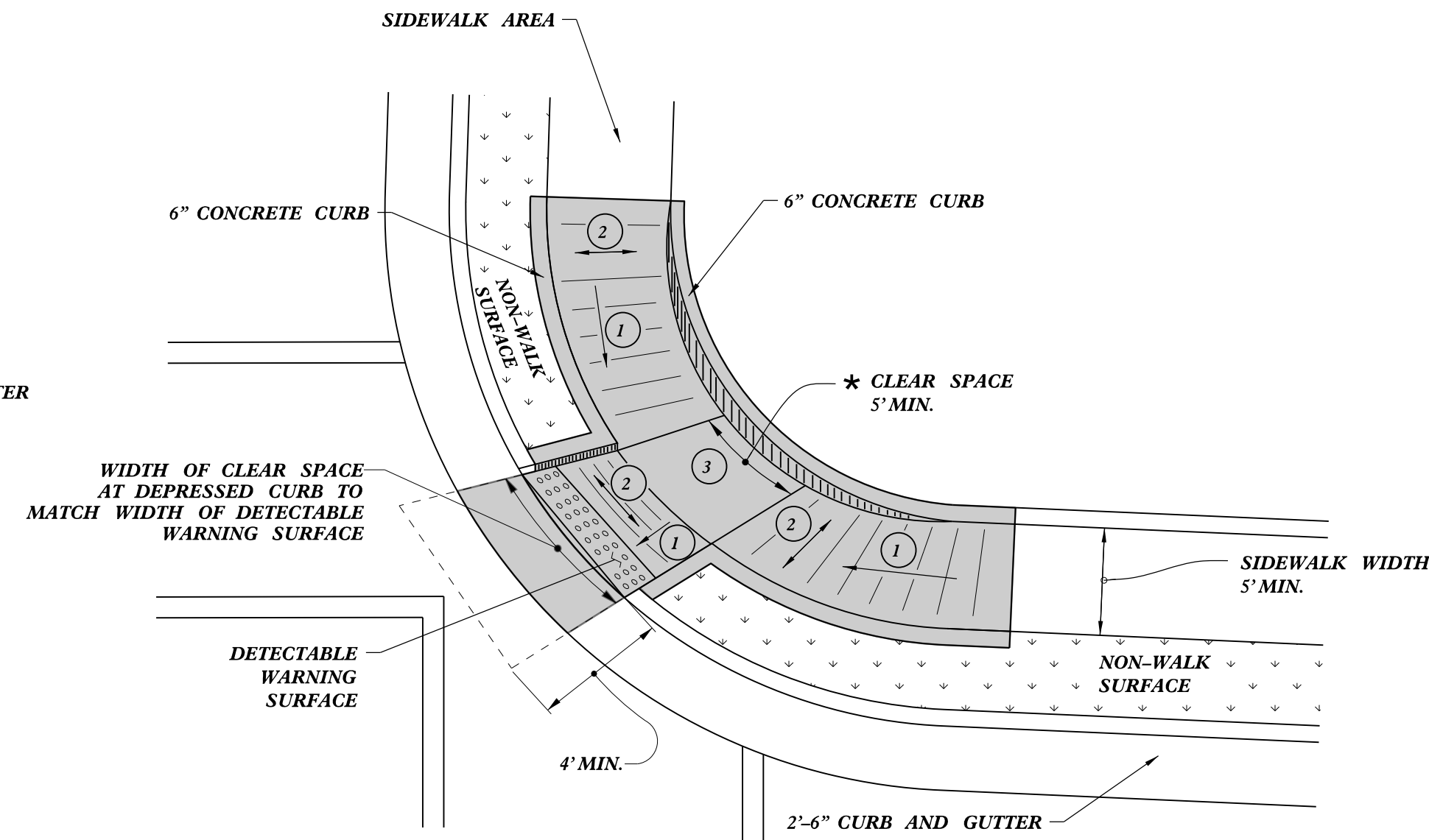
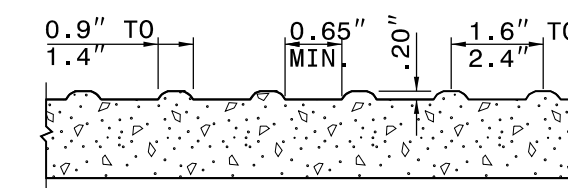


TYPE 3

NOTES:
 DETECTABLE WARNING SURFACE SHALL COVER 2'-0" LENGTH AND FULL WIDTH OF THE RAMP FLOOR AS SHOWN ON THE DETAILS.
 DETECTABLE WARNING SURFACE SHALL CONTRAST VISIBLY WITH ADJOINING SURFACE, EITHER LIGHT-ON-DARK, OR DARK-ON-LIGHT SEQUENCE COVERING THE ENTIRE RAMP.



DETECTABLE WARNING SURFACE



**TYPE 3 MODIFIED
 INSTALLATION IN A RADIUS**

- 1 8.33% (12:1) MAX RAMP SLOPE
- 2 CROSS SLOPE: 2.00%
- 3 MAXIMUM CROSS SLOPE AND LONGITUDINAL SLOPE OF 2.00%

PAY LIMITS FOR 1 CURB RAMP

STATE OF
 NORTH CAROLINA
 DEPT. OF TRANSPORTATION
 DIVISION OF HIGHWAYS
 RALEIGH, N.C.

ROADWAY STANDARD DRAWING FOR
CURB RAMP
 PARALLEL RAMP

SHEET 9 OF 13
848D06

DocuSigned by:
 Nicole M. Hecker
 5884320304164C5

01/12/2024



DOCUMENT NOT CONSIDERED FINAL
 UNLESS ALL SIGNATURES COMPLETED

**CONTRACTS STANDARDS
 AND DEVELOPMENT UNIT**
 Office 919-707-6950 FAX 919-250-4119

SEE TITLE BLOCK

ORIGINAL BY: S.CALHOUN DATE: 12-22-2023
 MODIFIED BY: DATE:
 CHECKED BY: DATE:
 FILE SPEC.: special_details\nmhackler\0609.dgn

ADA SUMMARY OF QUANTITIES - TOTALS

Project Number:	2024CPT.05.11.10921.1
County:	Wake

Sheet No.	17
-----------	----

Project Number	County	Municipality	Resurfacing Route	4447000000-E (LF) Pedestrian Channelizing Devices	4600000000-N (EA) Generic Traffic Control Item - Pedestrian Transport Service (Per Trip)	4600000000-N (EA) Generic Traffic Control Item - Audible Warning Devices	0156000000-E (SY) Removal of Existing Asphalt Pavement	2549000000-E (LF) 2'-6" Concrete Curb & Gutter	2752000000-E (LF) Remove Curb & Gutter	2591000000-E (SY) 4" Concrete Sidewalk	2738000000-E (SY) Remove and Replace Sidewalk	2738000000-E (SY) Remove Sidewalk	4116100000-N (EA) Sign Erection, relocate Type E (Ground Mounted)	2612500000-N (EA) Remove and Replace Concrete Curb Ramps	2605000000-N (EA) Concrete Curb Ramps	2759000000-N (EA) Remove Curb Ramps
East	Wake	Wendell	NC 231 From US 64 Bus To Johnston County	60	10	2	0	20	0	9	0	0	0	4	0	1
East	Wake	Wendell	Old Battle Bridge Rd From BUS 64 To SR 1003	60	10	2	72	0	0	3	0	0	0	10	1	0
East	Wake	Outside Municipality Wake Forest	Jones Farm Rd From SR 2053 To Cul-de-sac				0	10	8	6	15	9	0	6	2	0
East	Wake	Outside Municipality	Winter Spring Dr From SR 2053 To SR 5116				0	0	0	0	3	0	0	6	1	0
East	Wake	Outside Municipality	Sweetclover Dr From SR 4403 To END MAINT				0	72	0	12	0	0	0	6	0	4
East	Wake	Outside Municipality	Daybreak Dr From SR 4478 To SR 5116				0	108	0	0	0	0	0	6	0	6
East	Wake	Outside Municipality	Alfalfa Ln From SR 2053 To Dead End				10	69	0	15	3	0	1	5	1	3
GRAND TOTAL							120	20	4	82	279	8	45	21	9	1

ADA SUMMARY OF QUANTITIES - NC 231 FROM US 64 BUS TO JOHNSTON COUNTY

Municipality:	Wendell
Project Number:	2024CPT.05.11.10921.1
County:	Wake

Sheet No.
18

Ramp ID	Inset Map Number	Route 1	Route 2	0156000000-E (SY) Removal of Existing Asphalt Pavement	2549000000-E (LF) 2'-6" Concrete Curb & Gutter	2752000000-E (LF) Remove Curb & Gutter	2591000000-E (SY) 4" Concrete Sidewalk	2738000000-E (SY) Remove and Replace Sidewalk	2738000000-E (SY) Remove Sidewalk	4116100000-N (EA) Sign Erection, relocate Type E (Ground Mounted)	2612500000-N (EA) Remove and Replace Concrete Curb Ramps	2605000000-N (EA) Concrete Curb Ramps	2759000000-N (EA) Remove Curb Ramps	Improvement Type
63	1	NC-231 (N Selma Rd)	E Fourth St		20		9						1	Remove Ramp
65	1	NC-231 (N Selma Rd)	E Fourth St								1			Type 1D - 848.06
67	1	NC-231 (N Selma Rd)	E Fourth St								1			Type 1C - 848.06
68	1	NC-231 (N Selma Rd)	E Fourth St								1			Type 3 Modified - 848D06
24874	2	NC-231 (S Selma Rd)	Lawson Dr								1			Type 1 Modified - 848.06
Sub-Total for NC 231 From US 64 Bus To Johnston County				0	20	0	9	0	0	0	4	0	1	

Note: ADA quantity totals are provided on the project 'ADA SUMMARY OF QUANTITIES - TOTALS' page.

ADA SUMMARY OF QUANTITIES - OLD BATTLE BRIDGE RD FROM BUS 64 TO SR 1003

Municipality:	Wendell
Project Number:	2024CPT.05.11.20921.1
County:	Wake

Sheet No.
19

Ramp ID	Inset Map Number	Route 1	Route 2	0156000000-E (SY) Removal of Existing Asphalt Pavement	2549000000-E (LF) 2'-6" Concrete Curb & Gutter	2752000000-E (LF) Remove Curb & Gutter	2591000000-E (SY) 4" Concrete Sidewalk	2738000000-E (SY) Remove and Replace Sidewalk	2738000000-E (SY) Remove Sidewalk	4116100000-N (EA) Sign Erection, relocate Type E (Ground Mounted)	2612500000-N (EA) Remove and Replace Concrete Curb Ramps	2605000000-N (EA) Concrete Curb Ramps	2759000000-N (EA) Remove Curb Ramps	Improvement Type
25652	1	SR-2366 (Old Battle Bridge Rd)	SPC Mechanical (1500 Wendell Blvd) South Entrance								1			Type 1 Modified - 848.06
25664	1	SR-2366 (Old Battle Bridge Rd)	SPC Mechanical (1500 Wendell Blvd) South Entrance				3					1		Type 1 - 848.06
25653	2	SR-2366 (Old Battle Bridge Rd)	SR-2365 (Old Tarboro Rd)	8							1			Type 1 Modified - 848.06
25654	3	SR-2366 (Old Battle Bridge Rd)	Pool House Entrance	8							1			Type 1 Modified - 848.06
25655	3	SR-2366 (Old Battle Bridge Rd)	Pool House Entrance	8							1			Type 1 Modified - 848.06
25656	4	SR-2366 (Old Battle Bridge Rd)	Octans Way	8							1			Type 1 Modified - 848.06
25657	4	SR-2366 (Old Battle Bridge Rd)	Octans Way	8							1			Type 1 Modified - 848.06
25658	5	SR-2366 (Old Battle Bridge Rd)	Tuscana St	8							1			Type 1 Modified - 848.06
25659	5	SR-2366 (Old Battle Bridge Rd)	Tuscana St	8							1			Type 1 Modified - 848.06
25660	6	SR-2366 (Old Battle Bridge Rd)	Leo Minor Ln	8							1			Type 1 Modified - 848.06
25661	6	SR-2366 (Old Battle Bridge Rd)	Leo Minor Ln	8							1			Type 1 Modified - 848.06
Sub-Total for Old Battle Bridge Rd From BUS 64 To SR 1003				72	0	0	3	0	0	0	10	1	0	

Note: ADA quantity totals are provided on the project 'ADA SUMMARY OF QUANTITIES - TOTALS' page.

ADA SUMMARY OF QUANTITIES - JONES FARM RD FROM SR 2053 TO CUL-DE-SAC

Municipality:	Outside Municipality Wake Forest
Project Number:	2024CPT.05.11.20921.1
County:	Wake

Sheet No.
20

Ramp ID	Inset Map Number	Route 1	Route 2	0156000000-E (SY) Removal of Existing Asphalt Pavement	2549000000-E (LF) 2'-6" Concrete Curb & Gutter	2752000000-E (LF) Remove Curb & Gutter	2591000000-E (SY) 4" Concrete Sidewalk	2738000000-E (SY) Remove and Replace Sidewalk	2738000000-E (SY) Remove Sidewalk	4116100000-N (EA) Sign Erection, relocate Type E (Ground Mounted)	2612500000-N (EA) Remove and Replace Concrete Curb Ramps	2605000000-N (EA) Concrete Curb Ramps	2759000000-N (EA) Remove Curb Ramps	Improvement Type
24893	1	SR-2053 (Jones Dairy Rd)	Jones Farm Rd					3			1			Standard - 848.06
24894	1	SR-3644 (Jones Farm Rd)	SR-2053 (Jones Dairy Rd)		10		6					1		Standard - 848.06
2184	2	SR-3644 (Jones Farm Rd)	SR-3646 (Denwitty Dr)								1			Type 1C - 848.06
2185	2	SR-3644 (Jones Farm Rd)	SR-3646 (Denwitty Dr)					3			1			Type 1C - 848.06
2183	3	SR-3644 (Jones Farm Rd)	Fairlong Rd					3			1			Type 1C - 848.06
25662	3	SR-3644 (Jones Farm Rd)	Fairlong Rd			8			9			1		Type 3 - 848D06
2181	4	SR-3644 (Jones Farm Rd)	SR-3648 (Kirkham Ct)					3			1			Type 1C - 848.06
2182	4	SR-3644 (Jones Farm Rd)	SR-3648 (Kirkham Ct)					3			1			Type 1C - 848.06
Sub-Total for Jones Farm Rd From SR 2053 To Cul-de-sac				0	10	8	6	15	9	0	6	2	0	

Note: ADA quantity totals are provided on the project 'ADA SUMMARY OF QUANTITIES - TOTALS' page.

ADA SUMMARY OF QUANTITIES - WINTER SPRING DR FROM SR 2053 TO SR 5116

Municipality:	Outside Municipality
Project Number:	2024CPT.05.11.20921.1
County:	Wake

Sheet No.
21

Ramp ID	Inset Map Number	Route 1	Route 2	0156000000-E (SY) Removal of Existing Asphalt Pavement	2549000000-E (LF) 2'-6" Concrete Curb & Gutter	2752000000-E (LF) Remove Curb & Gutter	2591000000-E (SY) 4" Concrete Sidewalk	2738000000-E (SY) Remove and Replace Sidewalk	2738000000-E (SY) Remove Sidewalk	4116100000-N (EA) Sign Erection, relocate Type E (Ground Mounted)	2612500000-N (EA) Remove and Replace Concrete Curb Ramps	2605000000-N (EA) Concrete Curb Ramps	2759000000-N (EA) Remove Curb Ramps	Improvement Type
24895	1	SR-2053 (Jones Dairy Rd)	SR-4403 (Winter Spring Dr)									1		Standard - 848.06
2186	2	SR-4403 (Winter Spring Dr)	SR-4404 (Cloud Nine Ct)					3			1			Type 1C - 848.06
24892	2	SR-4403 (Winter Spring Dr)	SR-4404 (Cloud Nine Ct)								1			Type 1C - 848.06
2187	3	SR-4403 (Winter Spring Dr)	SR-4405 (Buttercup Ln)								1			Type 1C - 848.06
2188	3	SR-4403 (Winter Spring Dr)	SR-4405 (Buttercup Ln)								1			Type 1C - 848.06
2189	4	SR-4403 (Winter Spring Dr)	SR-4406 (Silent Brook Rd)								1			Type 1C - 848.06
2190	4	SR-4403 (Winter Spring Dr)	SR-4406 (Silent Brook Rd)								1			Type 1C - 848.06
Sub-Total for Winter Spring Dr From SR 2053 To SR 5116				0	0	0	0	3	0	0	6	1	0	

Note: ADA quantity totals are provided on the project 'ADA SUMMARY OF QUANTITIES - TOTALS' page.

ADA SUMMARY OF QUANTITIES - SWEETCLOVER DR FROM SR 4403 TO END MAINT

Municipality:	Outside Municipality
Project Number:	2024CPT.05.11.20921.1
County:	Wake

Sheet No.
22

Ramp ID	Inset Map Number	Route 1	Route 2	0156000000-E (SY) Removal of Existing Asphalt Pavement	2549000000-E (LF) 2'-6" Concrete Curb & Gutter	2752000000-E (LF) Remove Curb & Gutter	2591000000-E (SY) 4" Concrete Sidewalk	2738000000-E (SY) Remove and Replace Sidewalk	2738000000-E (SY) Remove Sidewalk	4116100000-N (EA) Sign Erection, relocate Type E (Ground Mounted)	2612500000-N (EA) Remove and Replace Concrete Curb Ramps	2605000000-N (EA) Concrete Curb Ramps	2759000000-N (EA) Remove Curb Ramps	Improvement Type
2191	1	SR-5116 (Sweetclover Dr)	SR-4403 (Winter Spring Dr)								1			Type 3 Modified - 848D06
2192	1	SR-5116 (Sweetclover Dr)	SR-4403 (Winter Spring Dr)								1			Type 3 Modified - 848D06
2197	2	SR-5116 (Sweetclover Dr)	SR-5117 (Whiteclover Ct)								1			Type 1C - 848.06
2198	2	SR-5116 (Sweetclover Dr)	SR-5117 (Whiteclover Ct)		18								1	Remove Ramp
2199	2	SR-5116 (Sweetclover Dr)	SR-5117 (Whiteclover Ct)		18								1	Remove Ramp
2200	2	SR-5116 (Sweetclover Dr)	SR-5117 (Whiteclover Ct)								1			Type 1C - 848.06
2193	3	SR-5116 (Sweetclover Dr)	SR-4480 (Daybreak Dr)								1			Type 1C - 848.06
2194	3	SR-5116 (Sweetclover Dr)	SR-4480 (Daybreak Dr)		18								1	Remove Ramp
2195	3	SR-5116 (Sweetclover Dr)	SR-4480 (Daybreak Dr)		18		12						1	Remove Ramp
2196	3	SR-5116 (Sweetclover Dr)	SR-4480 (Daybreak Dr)								1			Type 1D - 848.06
Sub-Total for Sweetclover Dr From SR 4403 To END MAINT				0	72	0	12	0	0	0	6	0	4	

Note: ADA quantity totals are provided on the project 'ADA SUMMARY OF QUANTITIES - TOTALS' page.

ADA SUMMARY OF QUANTITIES - DAYBREAK DR FROM SR 4478 TO SR 5116

Municipality:	Outside Municipality
Project Number:	2024CPT.05.11.20921.1
County:	Wake

Sheet No.
23

Ramp ID	Inset Map Number	Route 1	Route 2	0156000000-E (SY) Removal of Existing Asphalt Pavement	2549000000-E (LF) 2'-6" Concrete Curb & Gutter	2752000000-E (LF) Remove Curb & Gutter	2591000000-E (SY) 4" Concrete Sidewalk	2738000000-E (SY) Remove and Replace Sidewalk	2738000000-E (SY) Remove Sidewalk	4116100000-N (EA) Sign Erection, relocate Type E (Ground Mounted)	2612500000-N (EA) Remove and Replace Concrete Curb Ramps	2605000000-N (EA) Concrete Curb Ramps	2759000000-N (EA) Remove Curb Ramps	Improvement Type
2209	1	SR-4480 (Daybreak Dr)	SR-4481 (Old Pond Ct)								1			Type 1C - 848.06
2210	1	SR-4480 (Daybreak Dr)	SR-4481 (Old Pond Ct)		18								1	Remove Ramp
2211	1	SR-4480 (Daybreak Dr)	SR-4481 (Old Pond Ct)		18								1	Remove Ramp
2212	1	SR-4480 (Daybreak Dr)	SR-4481 (Old Pond Ct)								1			Type 1C - 848.06
2205	2	SR-4480 (Daybreak Dr)	SR-4406 (Silent Brook Rd)								1			Type 1C - 848.06
2206	2	SR-4480 (Daybreak Dr)	SR-4406 (Silent Brook Rd)		18								1	Remove Ramp
2207	2	SR-4480 (Daybreak Dr)	SR-4406 (Silent Brook Rd)		18								1	Remove Ramp
2208	2	SR-4480 (Daybreak Dr)	SR-4406 (Silent Brook Rd)								1			Type 1C - 848.06
2201	3	SR-4480 (Daybreak Dr)	SR-4482 (Teacup Spring Ct)								1			Type 1C - 848.06
2202	3	SR-4480 (Daybreak Dr)	SR-4482 (Teacup Spring Ct)		18								1	Remove Ramp
2203	3	SR-4480 (Daybreak Dr)	SR-4482 (Teacup Spring Ct)		18								1	Remove Ramp
2204	3	SR-4480 (Daybreak Dr)	SR-4482 (Teacup Spring Ct)								1			Type 1C - 848.06
Sub-Total for Daybreak Dr From SR 4478 To SR 5116				0	108	0	0	0	0	0	6	0	6	

Note: ADA quantity totals are provided on the project 'ADA SUMMARY OF QUANTITIES - TOTALS' page.

ADA SUMMARY OF QUANTITIES - ALFALFA LN FROM SR 2053 TO DEAD END

Municipality:	Outside Municipality
Project Number:	2024CPT.05.11.20921.1
County:	Wake

Sheet No.
24

Ramp ID	Inset Map Number	Route 1	Route 2	0156000000-E (SY) Removal of Existing Asphalt Pavement	2549000000-E (LF) 2'-6" Concrete Curb & Gutter	2752000000-E (LF) Remove Curb & Gutter	2591000000-E (SY) 4" Concrete Sidewalk	2738000000-E (SY) Remove and Replace Sidewalk	2738000000-E (SY) Remove Sidewalk	4116100000-N (EA) Sign Erection, relocate Type E (Ground Mounted)	2612500000-N (EA) Remove and Replace Concrete Curb Ramps	2605000000-N (EA) Concrete Curb Ramps	2759000000-N (EA) Remove Curb Ramps	Improvement Type
24896	1	SR-2053 (Jones Dairy Rd)	SR-4478 (Alfalfa Ln)		15		6			1		1		Type 1 Modified - 848.06
25663	1	SR-2053 (Jones Dairy Rd)	SR-4478 (Alfalfa Ln)	10							1			Standard - 848.06
2217	2	SR-4478 (Alfalfa Ln)	SR-4479 (Petite Ct)								1			Type 1C - 848.06
2218	2	SR-4478 (Alfalfa Ln)	SR-4479 (Petite Ct)		18								1	Remove Ramp
2220	2	SR-4478 (Alfalfa Ln)	SR-4479 (Petite Ct)					3			1			Type 1C - 848.06
2213	3	SR-4478 (Alfalfa Ln)	SR-4480 (Daybreak Dr)								1			Type 1C - 848.06
2214	3	SR-4478 (Alfalfa Ln)	SR-4480 (Daybreak Dr)		18								1	Remove Ramp
2215	3	SR-4478 (Alfalfa Ln)	SR-4480 (Daybreak Dr)		18		9						1	Remove Ramp
2216	3	SR-4478 (Alfalfa Ln)	SR-4480 (Daybreak Dr)								1			Type 1D - 848.06
Sub-Total for Alfalfa Ln From SR 2053 To Dead End				10	69	0	15	3	0	1	5	1	3	

Note: ADA quantity totals are provided on the project 'ADA SUMMARY OF QUANTITIES - TOTALS' page.

SUMMARY OF QUANTITIES

PROJECT NO. 2024CPT.05.11.10921.1,etc.	SHEET NO. 25	TOTAL NO.
---	-----------------	-----------

PROJECT NO	COUNT	MAP NO	ROUTE	DESCRIPTION	TYP NO	LANES	FINAL SURFACE TESTING REQUIRED	WARM MIX ASPHALT REQUIRED	LENGTH	WIDTH	015600000-E	122000000-E	124500000-E	126000000-E	129700000-E	130800000-E		133000000-E	151900000-E	157500000-E	170400000-E	254900000-E	259100000-E	260500000-N	261250000-N	273800000-E		275200000-E		275900000-N							
											REMOVAL OF EXISTING ASPHALT PAVEMENT	INCIDENTAL STONE BASE	SHOULDER RECONSTRUCTION	AGGREGATE SHOULDER BORROW	1 1/2" MILLING	0" TO 1.5" MILLING	0" TO 1.25" MILLING	INCIDENTAL MILLING	SURFACE COURSE, \$9.5B	ASPHALT BINDER FOR PLANT MIX	PATCHING EXISTING PAVEMENT	2'-6" CONCRETE CURB & GUTTER	4" CONCRETE SIDEWALK	CONCRETE CURB RAMPS	REMOVE AND REPLACE CONCRETE CURB RAMPS	REMOVE AND REPLACE SIDEWALK	REMOVE SIDEWALK	REMOVE CURB AND GUTTER	REMOVE AND REPLACE 2'-6" CURB & GUTTER	REMOVE CURB RAMPS							
								MI	FT		SY	TONS	SMI	TON	SY	SY	SY	SY	TONS	TON	TONS	LF	SY	EA	EA	SY	SY	LF	LF	EA							
2024CPT.05.11.10921.1	Wake	1	NC-231 N / N SELMA RD/S SELMA R	US 64 BUS TO JOHNSTON COUNTY	3	2	NO	NO	1.546	23-50		73	3.00	271				1,145	1,986	136	135	20	9		4					1							
FOR PROJ NO. 2024CPT.05.11.10921.1												73	3.00	271				1,145	1,986	136	135	20	9		4												1
2024CPT.05.11.20921.1	Wake	2	SR-2233 / N SMITHFIELD RD	SR 2049 - FORESTVILLE RD TO US BUS 64	4	2	NO	NO	0.73	42-65		37	1.46	135	19,279			500	1,705	120	199																
2024CPT.05.11.20921.1	Wake	3	SR-2320 / RILEY HILL RD	SR 1003 - ROLESVILLE RD TO SR 2329 LIZARD LICK RD	3	2	NO	NO	4.378	20-38		219	8.76	810				929	4,762	330	425																
2024CPT.05.11.20921.1	Wake	4	SR-2344 / N WHITLEY ST/CEMETARY RD	NC 97 - N GANNON AVE TO END MAINT	2	2	NO	NO	0.344	20		18	0.72	67		293			293	20	23																
2024CPT.05.11.20921.1	Wake	5	SR-2380 / E STRONACH AVE/N PRIVETTE ST	SR 2406 - OLD US 64 EAST TO DEAD END	2	2	NO	NO	0.264	20		13		67				140	225	18	66																
2024CPT.05.11.20921.1	Wake	6	SR-2366 / OLD BATTLE BRIDGE RD	FROM BUS 64 TO SR 1003	3	2	NO	NO	0.895	20	72	40	1.60	148	450			360	1,069	75	117		3	1	10												
2024CPT.05.11.20921.1	Wake	7	SR-2431 / HUNTDAL E TRL	FROM SR 2337 TO CUL-DE-SAC	3	2	NO	NO	0.308	20								100	339	26	87																
2024CPT.05.11.20921.1	Wake	8	SR-3644 / JONES FARM RD	SR 2053 - JONES DAIRY RD TO CUL-DE-SAC	4	2	NO	NO	0.349	24					4,914			156	455	30	10	10	6	2	6	15	9	8	30								
2024CPT.05.11.20921.1	Wake	9	SR-3645 / HORNBuckle CT	SR 3644 - JONES FARM RD TO CUL-DE-SAC	4	2	NO	NO	0.1	20					1,459			10	127	9	10																
2024CPT.05.11.20921.1	Wake	10	SR-3646 / DENWITTY DR	SR 3644 - JONES FARM RD TO SR 3647 - DEGRACE DR	4	2	NO	NO	0.065	22					839				73	5	10																
2024CPT.05.11.20921.1	Wake	11	SR-3647 / DEGRACE DR	CUL-DE-SAC TO CUL-DE-SAC	4	2	NO	NO	0.163	20					2,525			10	220	15	10																
2024CPT.05.11.20921.1	Wake	12	SR-3648 / KIRKHAM CT	CUL-DE-SAC TO CUL-DE-SAC	4	2	NO	NO	0.057	20					954			12	83	6	10																
2024CPT.05.11.20921.1	Wake	13	SR-3649 / JUMPER DR	SR 3644 - JONES FARM RD TO CUL-DE-SAC	4	2	NO	NO	0.123	20					1,747			15	152	10	5																
2024CPT.05.11.20921.1	Wake	14	SR-4313 / OLD LEWIS FARM RD	SR 2217 - OLD MILBURNIE TO CUL-DE-SAC	2	2	NO	NO	0.659	18		33							526	51	346																
2024CPT.05.11.20921.1	Wake	15	SR-4314 / AMETHYST RIDGE DR	SR 4313 - OLD LEWIS FARM TO CUL-DE-SAC	2	2	NO	NO	0.435	18		22								347	37	303															
2024CPT.05.11.20921.1	Wake	16	SR-4319 / CRYSTAL HILL CT	SR 4314 - AMETHYST RIDGE TO CUL-DE-SAC	2	2	NO	NO	0.064	18		3							67	9	87																
2024CPT.05.11.20921.1	Wake	17	SR-4403 / WINTER SPRING DR	SR 2053 - JONES DAIRY RD TO SR 5116 - SWEETCLOVER DR	4	2	NO	NO	0.412	30					7,333			256	638	44	45			1	6	3											
2024CPT.05.11.20921.1	Wake	18	SR-4404 / CLOUD NINE CT	SR 4403 - WINTER SPRING DR TO CUL-DE-SAC	4	2	NO	NO	0.046	20					868			17	75	5	10																
2024CPT.05.11.20921.1	Wake	19	SR-4405 / BUTTERCUP LN	SR 4403 - WINTER SPRING DR TO SR 4406 - SILENT BR RD EXT	4	2	NO	NO	0.365	22					4,711				410	27	10																
2024CPT.05.11.20921.1	Wake	20	SR-4406 / SILENT BROOK RD	SR 4403 - WINTER SPRING DR TO SR 4480 - DAYBREAK DR	4	2	NO	NO	0.394	20					4,623				403	27	10																
2024CPT.05.11.20921.1	Wake	21	SR-4407 / CALICO CT	SR 4406 - SILENT BR RD EXT TO CUL-DE-SAC	4	2	NO	NO	0.077	22					1,264			18	110	8	10																
2024CPT.05.11.20921.1	Wake	22	SR-4478 / ALFALFA LN	SR 2053 - JONES DAIRY RD TO DEAD END	4	2	NO	NO	0.28	30	10				4,928				429	28	10	69	15	1	5	3					3						
2024CPT.05.11.20921.1	Wake	23	SR-4479 / PETITE CT	SR 4478 - ALFALFA LN TO CUL-DE-SAC	4	2	NO	NO	0.053	22					1,000			15	87	6	10																
2024CPT.05.11.20921.1	Wake	24	SR-4480 / DAYBREAK DR	SR 4478 - ALFALFA LN TO SR 5116 - SWEETCLOVER DR	4	2	NO	NO	0.314	30					5,526				481	32	10	108				6					6						
2024CPT.05.11.20921.1	Wake	25	SR-4481 / OLD POND CT	SR 4480 - DAYBREAK DR TO CUL-DE-SAC	4	2	NO	NO	0.053	22					959			18	83	6	10																
2024CPT.05.11.20921.1	Wake	26	SR-4482 / TEACUP SPRING CT	SR 4480 - DAYBREAK DR TO CUL-DE-SAC	4	2	NO	NO	0.083	22					1,426			20	124	9	10																
2024CPT.05.11.20921.1	Wake	27	SR-5116 / SWEETCLOVER DR	SR 4403 - WINTER SPRING DR TO DEAD END	4	2	NO	NO	0.386	30					6,794			250	591	39	10	72	12		6						4						
2024CPT.05.11.20921.1	Wake	28	SR-5117 / WHITECLOVER CT	SR 5116 - SWEETCLOVER DR TO CUL-DE-SAC	4	2	NO	NO	0.037	22					820			10	71	5	10																
2024CPT.05.11.20921.1	Wake	29	SR-2390 / VISTA DR	NC 97 - N GANNON AVE TO DEAD END	2	2	NO	NO	0.289	20		14							246	18	40																
2024CPT.05.11.20921.1	Wake	30	SR-2394 / HERITAGE DR	NC 97 - N GANNON AVE TO DEAD END	2	2	NO	NO	0.349	20		17							297	31	237																
2024CPT.05.11.20921.1	Wake	31	SR-2401 / FOX RUN DR/N GAYLEE LAKE	NC 97 - N GANNON AVE TO SR 2415 - QUAIL RUN DR	2	2	NO	NO	0.735	20		37							626	53	252																
2024CPT.05.11.20921.1	Wake	32	SR-2414 / INDIAN TRL	NC 97 - N GANNON AVE TO DEAD END	2	2	NO	NO	0.324	22		16							303	29	191																
2024CPT.05.11.20921.1	Wake	33	SR-2457 / STAGHOUND TRL	FROM SR 2337 TO SR 2459	2	2	NO	NO	0.21	20		11						166	179	14	59																
2024CPT.05.11.20921.1	Wake	34	SR-2427 / HUNTSMAN TRL	FROM SR 2337 TO SR 2427	2	2	NO	NO	0.602	20		30						98	518	37	75																
2024CPT.05.11.20921.1	Wake	35	SR-2475 / HUNT RUN CIR	FROM SR 2431 TO CUL-DE-SAC	2	2	NO	NO	0.096	18		5						227	90	7	22																
2024CPT.05.11.20921.1	Wake	36	SR-2459 / STAGHOUND TRL	FROM SR 2457 TO END MAINT	2	2	NO	NO	0.036	20		2						100	33	3	22																
FOR PROJ NO. 2024CPT.05.11.20921.1												82	517	12.54	1,160	71,969	450	293	3,427	16,237	1,189	2,761	259	36	5	39	21	9	8	30	13						
2024CPT.05.11.20922.1	Wake	37	SR-2395 / RIDGE ST	SR 2394 - HERITAGE DR TO DEAD END	1	2	NO	NO	0.055	20		3							37	3	10																
2024CPT.05.11.20922.1	Wake	38	SR-2402 / RHODES ST	SR 2401 - WINDY HILL RD TO SR 2403 - LEE ST	1	2	NO	NO	0.079	21		4							56	4	10																
2024CPT.05.11.20922.1	Wake	39	SR-2403 / LEE ST	NC 97 - N GANNON AVE TO SR 2402 - RHODES ST	1	2	NO	NO	0.151	22		8							113	8	10																
2024CPT.05.11.20922.1	Wake	40	SR-2415 / QUAIL RUN DR	SR 2414 - INDIAN TRL TO SR 2401 - WINDY HILL RD	1	2	NO	NO	0.09	22		5							67	5	10																
2024CPT.05.11.20922.1	Wake	41	SR-2428 / RAYBON DR	NC 97 - N GANNON AVE TO DEAD END	1	2	NO	NO	0.47	20		24							320	21	10																
2024CPT.05.11.20922.1	Wake	42	SR-2433 / S GAYLEE LAKE DR	NC 97 - N GANNON AVE TO END MAINT	1	2	NO	NO																													

PROJECT NO.	SHEET NO.	TOTAL NO.
2024CPT.05.11.10921.1,etc.	26	

PROJECT NO	COUNT	MAP NO	ROUTE	DESCRIPTION	TYP NO	LANES	FINAL SURFACE TESTING REQUIRED	WARM MIX ASPHALT REQUIRED	LENGTH	WIDTH	283000000-N	284500000-N	411610000-N	460000000-N	744400000-E	
											ADJUST MANHOLES	ADJUST METER OR VALVE BOX	SIGN ERECTION, RELOCATE TYPE E (GROUND MOUNTED)	PEDESTRIAN TRANSPORT SERVICE (PER TRIP)	AUDIBLE WARNING DEVICES	INDUCTIVE LOOP SAWCUT
									MI	FT	EA	EA	EA	EA	EA	LF
2024CPT.05.11.10921.1	Wake	1	NC-231 N / N SELMA RD/S SELMA RD	US 64 BUS TO JOHNSTON COUNTY	3	2	NO	NO	1.546	23-50				10	2	
FOR PROJ NO. 2024CPT.05.11.10921.1																
2024CPT.05.11.20921.1	Wake	2	SR-2233 / N SMITHFIELD RD	SR 2049 - FORESTVILLE RD TO US BUS 64	4	2	NO	NO	0.73	42-65						860
2024CPT.05.11.20921.1	Wake	3	SR-2320 / RILEY HILL RD	SR 1003 - ROLESVILLE RD TO SR 2329 LIZARD LICK RD	3	2	NO	NO	4.378	20-38						
2024CPT.05.11.20921.1	Wake	4	SR-2344 / N WHITLEY ST/CEMETARY RD	NC 97 - N GANNON AVE TO END MAINT	2	2	NO	NO	0.344	20						
2024CPT.05.11.20921.1	Wake	5	SR-2380 / E STRONACH AVE/N PRIVETTE ST	SR 2406 - OLD US 64 EAST TO DEAD END	2	2	NO	NO	0.264	20						
2024CPT.05.11.20921.1	Wake	6	SR-2366 / OLD BATTLE BRIDGE RD	FROM BUS 64 TO SR 1003	3	2	NO	NO	0.895	20						
2024CPT.05.11.20921.1	Wake	7	SR-2431 / HUNTDAL TRL	FROM SR 2337 TO CUL-DE-SAC	3	2	NO	NO	0.308	20						
2024CPT.05.11.20921.1	Wake	8	SR-3644 / JONES FARM RD	SR 2053 - JONES DAIRY RD TO CUL-DE-SAC	4	2	NO	NO	0.349	24	3	5				
2024CPT.05.11.20921.1	Wake	9	SR-3645 / HORNBUCKLE CT	SR 3644 - JONES FARM RD TO CUL-DE-SAC	4	2	NO	NO	0.1	20	2	2				
2024CPT.05.11.20921.1	Wake	10	SR-3646 / DENWITTY DR	SR 3644 - JONES FARM RD TO SR 3647 - DEGRACE DR	4	2	NO	NO	0.065	22						
2024CPT.05.11.20921.1	Wake	11	SR-3647 / DEGRACE DR	CUL-DE-SAC TO CUL-DE-SAC	4	2	NO	NO	0.163	20	2					
2024CPT.05.11.20921.1	Wake	12	SR-3648 / KIRKHAM CT	CUL-DE-SAC TO CUL-DE-SAC	4	2	NO	NO	0.057	20	1	2				
2024CPT.05.11.20921.1	Wake	13	SR-3649 / JUMPER DR	SR 3644 - JONES FARM RD TO CUL-DE-SAC	4	2	NO	NO	0.123	20	3					
2024CPT.05.11.20921.1	Wake	14	SR-4313 / OLD LEWIS FARM RD	SR 2217 - OLD MILBURNIE TO CUL-DE-SAC	2	2	NO	NO	0.659	18						
2024CPT.05.11.20921.1	Wake	15	SR-4314 / AMETHYST RIDGE DR	SR 4313 - OLD LEWIS FARM TO CUL-DE-SAC	2	2	NO	NO	0.435	18						
2024CPT.05.11.20921.1	Wake	16	SR-4319 / CRYSTAL HILL CT	SR 4314 - AMETHYST RIDGE TO CUL-DE-SAC	2	2	NO	NO	0.064	18						
2024CPT.05.11.20921.1	Wake	17	SR-4403 / WINTER SPRING DR	SR 2053 - JONES DAIRY RD TO SR 5116 - SWEETCLOVER DR	4	2	NO	NO	0.412	30	3	2		10	2	
2024CPT.05.11.20921.1	Wake	18	SR-4404 / CLOUD NINE CT	SR 4403 - WINTER SPRING DR TO CUL-DE-SAC	4	2	NO	NO	0.046	20						
2024CPT.05.11.20921.1	Wake	19	SR-4405 / BUTTERCUP LN	SR 4403 - WINTER SPRING DR TO SR 4406 - SILENT BR RD EXT	4	2	NO	NO	0.365	22						
2024CPT.05.11.20921.1	Wake	20	SR-4406 / SILENT BROOK RD	SR 4403 - WINTER SPRING DR TO SR 4480 - DAYBREAK DR	4	2	NO	NO	0.394	20						
2024CPT.05.11.20921.1	Wake	21	SR-4407 / CALICO CT	SR 4406 - SILENT BR RD EXT TO CUL-DE-SAC	4	2	NO	NO	0.077	22						
2024CPT.05.11.20921.1	Wake	22	SR-4478 / ALFALFA LN	SR 2053 - JONES DAIRY RD TO DEAD END	4	2	NO	NO	0.28	30			1			
2024CPT.05.11.20921.1	Wake	23	SR-4479 / PETITE CT	SR 4478 - ALFALFA LN TO CUL-DE-SAC	4	2	NO	NO	0.053	22						
2024CPT.05.11.20921.1	Wake	24	SR-4480 / DAYBREAK DR	SR 4478 - ALFALFA LN TO SR 5116 - SWEETCLOVER DR	4	2	NO	NO	0.314	30						
2024CPT.05.11.20921.1	Wake	25	SR-4481 / OLD POND CT	SR 4480 - DAYBREAK DR TO CUL-DE-SAC	4	2	NO	NO	0.053	22						
2024CPT.05.11.20921.1	Wake	26	SR-4482 / TEACUP SPRING CT	SR 4480 - DAYBREAK DR TO CUL-DE-SAC	4	2	NO	NO	0.083	22						
2024CPT.05.11.20921.1	Wake	27	SR-5116 / SWEETCLOVER DR	SR 4403 - WINTER SPRING DR TO DEAD END	4	2	NO	NO	0.386	30						
2024CPT.05.11.20921.1	Wake	28	SR-5117 / WHITECLOVER CT	SR 5116 - SWEETCLOVER DR TO CUL-DE-SAC	4	2	NO	NO	0.037	22						
2024CPT.05.11.20921.1	Wake	29	SR-2390 / VISTA DR	NC 97 - N GANNON AVE TO DEAD END	2	2	NO	NO	0.289	20						
2024CPT.05.11.20921.1	Wake	30	SR-2394 / HERITAGE DR	NC 97 - N GANNON AVE TO DEAD END	2	2	NO	NO	0.349	20						
2024CPT.05.11.20921.1	Wake	31	SR-2401 / FOX RUN DR/N GAYLEE LAKE	NC 97 - N GANNON AVE TO SR 2415 - QUAIL RUN DR	2	2	NO	NO	0.735	20						
2024CPT.05.11.20921.1	Wake	32	SR-2414 / INDIAN TRL	NC 97 - N GANNON AVE TO DEAD END	2	2	NO	NO	0.324	22						
2024CPT.05.11.20921.1	Wake	33	SR-2457 / STAGHOUND TRL	FROM SR 2337 TO SR 2459	2	2	NO	NO	0.21	20						
2024CPT.05.11.20921.1	Wake	34	SR-2427 / HUNTSMAN TRL	FROM SR 2337 TO SR 2427	2	2	NO	NO	0.602	20						
2024CPT.05.11.20921.1	Wake	35	SR-2475 / HUNT RUN CIR	FROM SR 2431 TO CUL-DE-SAC	2	2	NO	NO	0.096	18						
2024CPT.05.11.20921.1	Wake	36	SR-2459 / STAGHOUND TRL	FROM SR 2457 TO END MAINT	2	2	NO	NO	0.036	20						
FOR PROJ NO. 2024CPT.05.11.20921.1																
2024CPT.05.11.20922.1	Wake	37	SR-2394 / HERITAGE DR	SR 2394 - HERITAGE DR TO DEAD END	1	2	NO	NO	0.055	20						
2024CPT.05.11.20922.1	Wake	38	SR-2402 / RHODES ST	SR 2401 - WINDY HILL RD TO SR 2403 - LEE ST	1	2	NO	NO	0.079	21						
2024CPT.05.11.20922.1	Wake	39	SR-2403 / LEE ST	NC 97 - N GANNON AVE TO SR 2402 - RHODES ST	1	2	NO	NO	0.151	22						
2024CPT.05.11.20922.1	Wake	40	SR-2415 / QUAIL RUN DR	SR 2414 - INDIAN TRL TO SR 2401 - WINDY HILL RD	1	2	NO	NO	0.09	22						
2024CPT.05.11.20922.1	Wake	41	SR-2428 / RAYBON DR	NC 97 - N GANNON AVE TO DEAD END	1	2	NO	NO	0.47	20						
2024CPT.05.11.20922.1	Wake	42	SR-2433 / S GAYLEE LAKE DR	NC 97 - N GANNON AVE TO END MAINT	1	2	NO	NO	0.154	20						
2024CPT.05.11.20922.1	Wake	43	SR-2429 / ENGLISH FOXHOUND TRL	FROM SR 2427 TO CUL-DE-SAC	1	2	NO	NO	0.125	20						
2024CPT.05.11.20922.1	Wake	44	SR-2458 / BALUSTRATE CT	FROM SR 2457 TO CUL-DE-SAC	1	2	NO	NO	0.078	20						
2024CPT.05.11.20922.1	Wake	45	SR-4141 / WILEY OAKS DR	FROM SR 2504 TO CUL-DE-SAC	1	2	NO	NO	0.391	18						
FOR PROJ NO. 2024CPT.05.11.20922.1																
GRAND TOTAL																
									1.593		14	11	1	20	4	860
									17.214							

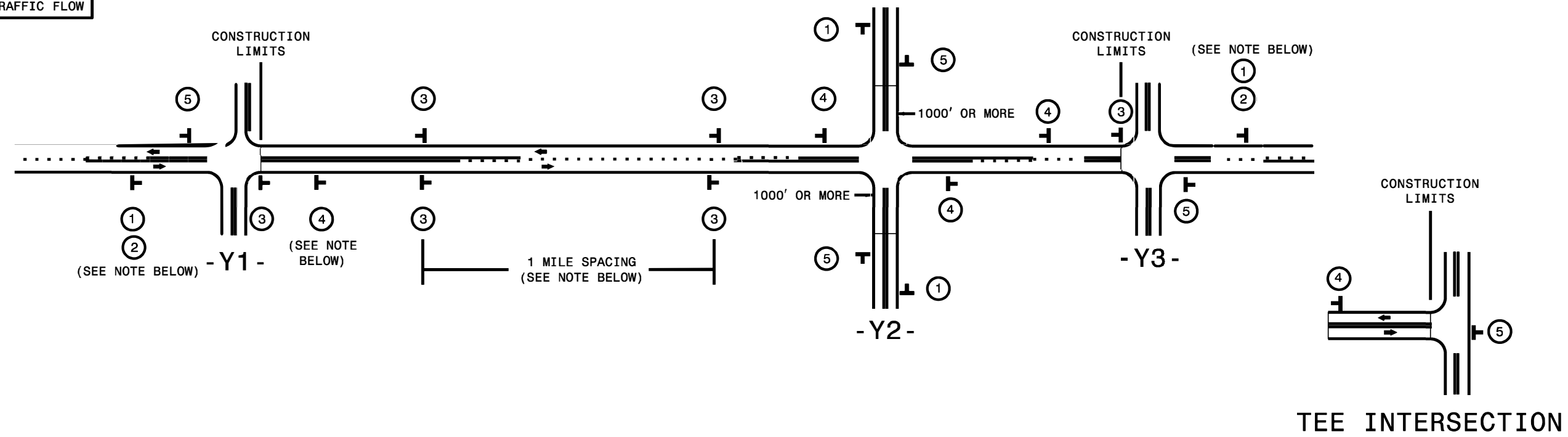
PROJECT NO.	SHEET NO.	TOTAL NO.
2024CPT.05.11.10921.1, etc.	28	

THERMOPLASTIC AND PAINT QUANTITIES

PROJECT NO	COUNTY	MAP NO	ROUTE	DESCRIPTION	TYP NO	LANES	LENGTH	WIDTH	441300000-E	444700000-E	445700000-N	451000000-N	468500000-E	469500000-E	470000000-E	470900000-E	472000000-E				472500000-E				490510000-N					
									WORK ZONE ADVANCE/GENERAL WARNING SIGNING	PEDESTRIAN CHANNELIZING DEVICES	TEMPORARY TRAFFIC CONTROL	LAW ENFORCEMENT	4" X 90 M WHITE THERMO	4" X 90 M YELLOW THERMO	8" X 90 M YELLOW THERMO	8" X 90 M WHITE THERMO	12" X 90 M YELLOW THERMO	24" X 90 M WHITE THERMO	THERMO MSG ONLY 90 M	THERMO MSG SCHOOL 90 M	THERMO MSG AHEAD 90 M	THERMO MSG STOP 90 M	THERMO LT ARROW 90 M	THERMO RT ARROW 90 M	THERMO STR ARROW 90 M	THERMO STR & RT ARROW 90 M	THERMO STR RT ARROW 90 M	NON-CAST IRON SNOWPLOWABLE PAVEMENT MARKER		
									MI	FT	SF	LF	LS	HR	LF	LF	LF	LF	LF	EA	EA	EA	EA	EA	EA	EA	EA	EA	EA	
2024CPT.05.11.20922.1	Wake	37	SR-2395 / RIDGE ST	SR 2394 - HERITAGE DR TO DEAD END	1	2	0.055	20	6																					
2024CPT.05.11.20922.1	Wake	38	SR-2402 / RHODES ST	SR 2401 - WINDY HILL RD TO SR 2403 - LEE ST	1	2	0.079	21	9																					
2024CPT.05.11.20922.1	Wake	39	SR-2403 / LEE ST	NC 97 - N GANNON AVE TO SR 2402 - RHODES ST	1	2	0.151	22	17																					
2024CPT.05.11.20922.1	Wake	40	SR-2415 / QUAIL RUN DR	SR 2414 - INDIAN TRL TO SR 2401 - WINDY HILL RD	1	2	0.090	22	10																					
2024CPT.05.11.20922.1	Wake	41	SR-2428 / RAYBON DR	NC 97 - N GANNON AVE TO DEAD END	1	2	0.470	20	53																					
2024CPT.05.11.20922.1	Wake	42	SR-2433 / S GAYLEE LAKE DR	NC 97 - N GANNON AVE TO END MAINT	1	2	0.154	20	17																					
2024CPT.05.11.20922.1	Wake	43	SR-2429 / ENGLISH FOXHOUND TRL	FROM SR 2427 TO CUL-DE-SAC	1	2	0.125	20	14																					
2024CPT.05.11.20922.1	Wake	44	SR-2458 / BALUSTRATE CT	FROM SR 2457 TO CUL-DE-SAC	1	2	0.078	20	9																					
2024CPT.05.11.20922.1	Wake	45	SR-4141 / WILEY OAKS DR	FROM SR 2504 TO CUL-DE-SAC	1	2	0.391	18	44																					
TOTAL FOR PROJ NO. 2024CPT.05.11.20922.1							1.593		179		*																			
GRAND TOTAL							17,214		2,053	120	1	240	80,518	82,568	120	518	200	600	8	18	10	16	23	9	12	4	1	105		
													163,086		638						52				49					







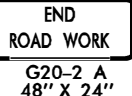
SIGNING FOR RESURFACING PROJECTS

LEGEND
 STATIONARY SIGN
 DIRECTION OF TRAFFIC FLOW



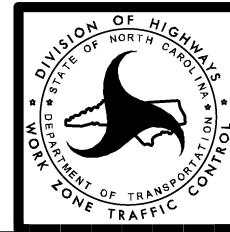
MAINLINE (-L-) SIGNING

-Y- LINE SIGNING

SIGNING NOTES AND PLACEMENT PER DIRECTION	①	 W20-1 48" X 48"	PLACE 1000' PRIOR TO BEGINNING OF CONSTRUCTION LIMITS. ONLY USED ON -Y- LINES IF RESURFACING LIMITS EXTEND 1000' ALONG -Y- LINE.	<p>NO REQUIRED STATIONARY SIGNING FOR THE FOLLOWING -Y- LINE CONDITIONS:</p> <ol style="list-style-type: none"> 1) LESS THAN 1000' OF RESURFACING ALONG -Y- LINE 2) SUBDIVISION ROADS 3) DEAD END ROADS <p>WHEN PAVING/CONSTRUCTION ACTIVITIES PROCEED ACROSS AN UNSIGNED -Y- LINE, PORTABLE ADVANCE WARNING SIGNS SHALL BE USED ALONG THE -Y- LINE AS SHOWN BELOW. REMOVE UPON COMPLETION OF WORK.</p> <div style="display: flex; justify-content: space-around;"> <div style="text-align: center;">  W20-1 48" X 48" PLACED 500' IN ADVANCE OF FLAGGER. </div> <div style="text-align: center;">  W20-7 A 48" X 48" PLACED 250' IN ADVANCE OF FLAGGER. </div> </div>
	②	 W7-3aP 24" X 18"	#2 SIGN ONLY USED WHEN CONSTRUCTION LIMITS ARE 2 OR MORE MILES IN LENGTH. ROUND UP TO NEXT WHOLE NUMBER. (NO FRACTIONAL OR DECIMAL NUMBERS)	
	③	 SP 13107 48" X 48"	- PLACE INITIALLY AT THE CONSTRUCTION LIMITS AND SPACE 1 MILE APART THEREAFTER. - AT TEE INTERSECTIONS INSTALL INITIALLY 1/2 MILE FROM INTERSECTION AND SPACE 1 MILE APART THEREAFTER.	
	④	 SP 13106 48" X 48"	- THESE ARE FOR -Y- LINES THAT ARE "THROUGH" ROADWAYS. - DEAD END AND SUBDIVISION ROADS ARE NOT "THROUGH" ROADWAYS. - INSTALL 500' +/- FROM EACH -Y- LINE APPROACH AS SHOWN ABOVE. - FOR MULTIPLE -Y- LINES THAT ARE SEPARATED BY 0.25 MILES OR LESS, TREAT AS A SINGLE UNIT AND INSTALL WITHIN 500' OF EACH APPROACH. - A MAXIMUM OF 2 SIGN SETS PER MILE. DO NOT INSTALL WHEN -Y- LINES ARE WITHIN 0.5 MILES FROM "END ROAD WORK" SIGN. - FOR TEE INTERSECTIONS, INSTALL WITHIN 500' +/- OF THE INTERSECTION ALONG -L- LINE.	
	⑤	 G20-2 A 48" X 24"	PLACE 500' FOLLOWING THE END OF CONSTRUCTION LIMITS OR AS SHOWN WHEN WORK ENDS AT A 3-WAY TEE INTERSECTION.	
<p>THE ABOVE SIGNS ARE ALL THAT ARE REQUIRED FOR A CONTRACTOR TO BEGIN A RESURFACING CONTRACT. ANY ADDITIONAL SIGNS REQUESTED BY NCDOT DIVISIONS SHALL BE INSTALLED WITHIN 7 BUSINESS DAYS OF THE START OF CONTRACT WORK.</p>				

MAPS LESS THAN 2 MILES

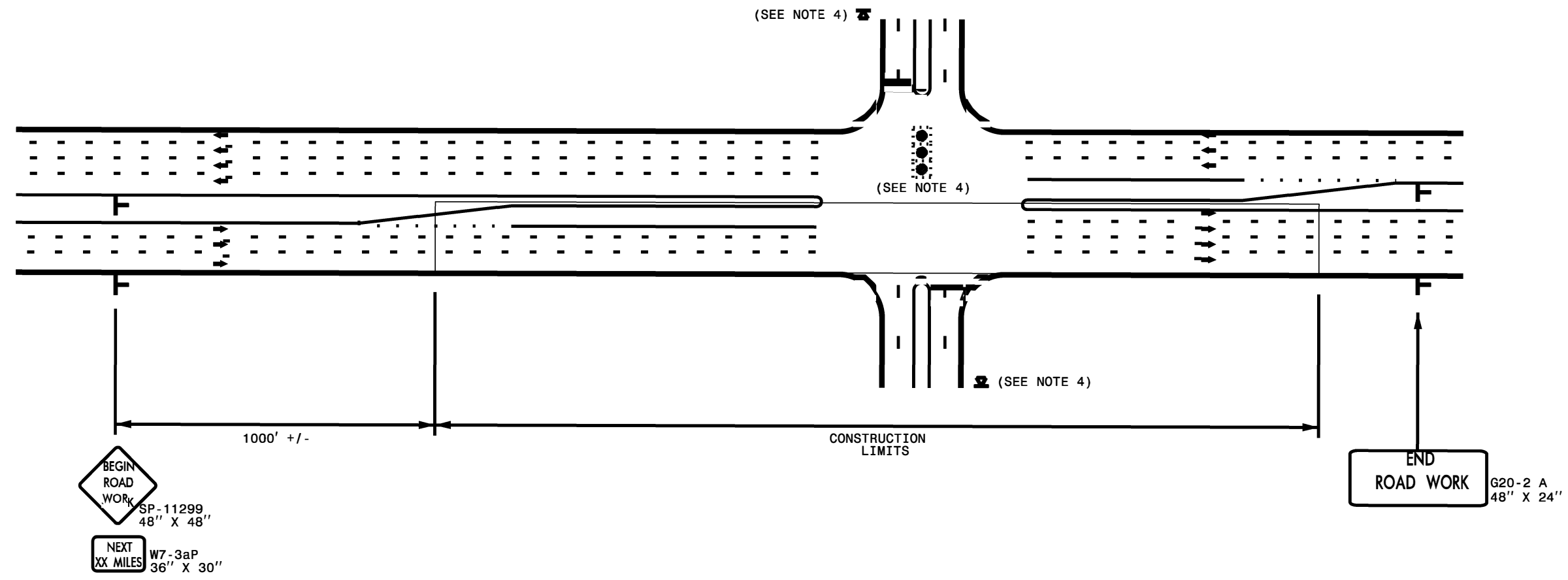
FOR RESURFACING MAPS WITH CONSTRUCTION LIMITS LESS THAN 2 MILES IN LENGTH, NO STATIONARY SIGNS ARE REQUIRED. USE PORTABLE "ROAD UNDER CONSTRUCTION" OR "ROAD WORK AHEAD" SIGNS IN LIEU OF STATIONARY ADVANCE WARNINGS SIGNS.



ADVANCE WARNING SIGNS FOR RURAL AND SUBURBAN 2-LANE ROADWAY RESURFACING

\$\$\$\$\$SYTIME\$\$\$\$\$
 \$\$\$CDON\$\$\$\$\$
 \$\$\$USERNAME\$\$\$\$\$

URBAN / SUBURBAN WORKZONES

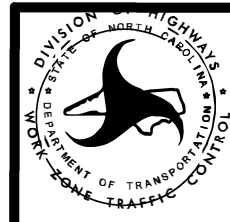


NOTES:

- 1) 48" x 48" SIZED SIGNS (SP- 11299) MAY BE REDUCED TO 36" X 36" ON ROADWAYS WITH SPEED LIMITS OF 40 MPH OR LESS.
- 2) MOUNT SIGNS THAT ARE LARGER THAN 10 SQUARE FEET IN AREA ON TWO OR MORE WOOD OR U-CHANNEL SUPPORTS. PERFORATED SQUARE TUBING SUPPORT SYSTEMS MAY SUPPORT LARGER AREAS ON A SINGLE SUPPORT. FOLLOW MANUFACTURER'S RECOMMENDATIONS. THESE SYSTEMS SHALL BE NCHRP 350 COMPLIANT AND NCDOT APPROVED.
- 3) ADVANCE WARNING SIGNS NOT REQUIRED ON NON-SIGNALIZED SIDE STREETS.
- 4) MAY USE LAW ENFORCEMENT TO CONTROL TRAFFIC AT SIGNALIZED INTERSECTIONS AS DIRECTED BY THE ENGINEER. PROVIDE PORTABLE "ROAD WORK AHEAD" (W20-1) SIGNS 500' IN ADVANCE ALONG BOTH APPROACHES FROM THE SIDE STREETS WHEN PAVING PROCEEDS THROUGH THE INTERSECTION.
- 5) LATERAL CLEARANCE AT ALL SIGN LOCATIONS SHALL BE 2' AS MEASURED FROM THE EDGE OF PAVEMENT OR THE FACE OF THE CURB. WHEN UNABLE TO OBTAIN THE LATERAL CLEARANCE WITHIN THE MEDIAN AREA USE SHOULDER MOUNTS ONLY.
- 6) SIGN MOUNT LOCATIONS SHALL NOT BLOCK SIDEWALKS OR DRIVEWAYS.
- 7) IF STATIONARY GENERAL WARNING SIGNS ARE USED, THEY WILL BE PAID FOR PER SECTION 104 OF THE NCDOT STANDARD SPECIFICATIONS AS EXTRA WORK.
- 8) IF MILLED AREAS ARE NOT PAVED BACK BY THE END OF THE WORK DAY, PORTABLE SIGNS SHALL BE USED TO WARN DRIVERS OF THE PRESENT CONDITIONS. THESE ARE TO INCLUDE, BUT NOT LIMITED TO "ROUGH ROAD" W8-8, "UNEVEN LANES" W8-11, "GROOVED PAVEMENT" W8-15 w/MOTORCYCLE PLAQUE MOUNTED BELOW. THESE ARE TO BE DOUBLE INDICATED ON MULTI-LANE ROADWAYS WITH SPEED LIMITS 45 MPH AND GREATER WHERE LATERAL CLEARANCE CAN BE OBTAINED WITHIN THE MEDIAN AREAS. THESE PORTABLE SIGNS ARE INCIDENTAL TO THE OTHER ITEMS OF WORK INCLUDED IN THE TEMPORARY TRAFFIC CONTROL (LUMP SUM) PAY ITEM.

LEGEND

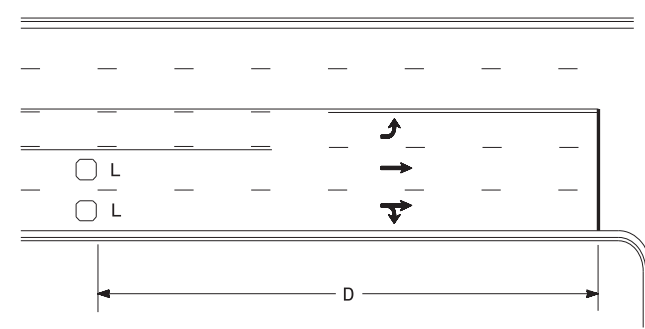
STATIONARY SIGN
 DIRECTION OF TRAFFIC FLOW



**RESURFACING ADVANCE
WARNING SIGNS FOR
URBAN / SUBURBAN
FACILITIES**

\$\$\$SYTIME\$\$\$
 \$\$\$USERNAM\$\$\$
 \$\$\$DCN\$\$\$
 \$\$\$\$\$\$

High Speed Detection (≥40 mph)

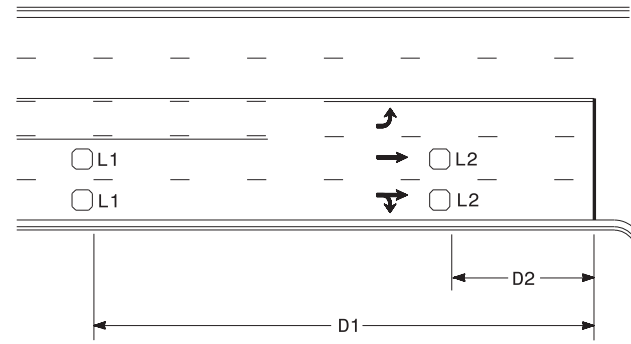


Speed Limit mph	D ft
40	250
45	300
50	355
55	420

L = 6ft X 6ft
Wired separately

Volume Density Operation

OR

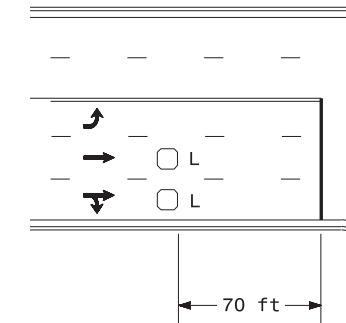


Speed Limit mph	D1 ft	D2 ft
40	250	80
45	300	90
50	355	100
55	420	110

L1 = 6ft X 6ft
Wired in series
L2 = 6ft X 6ft
Wired in series

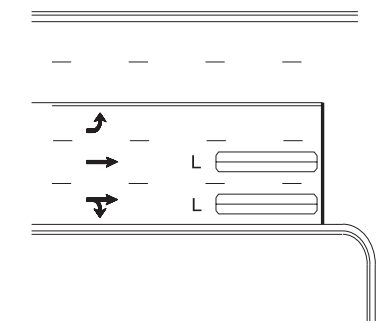
"Stretch" Operation

Low Speed Detection (≤35 mph)



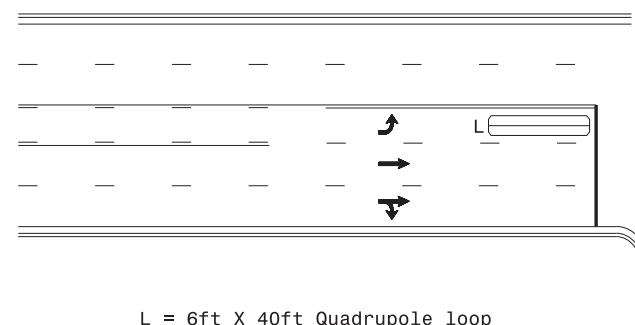
L = 6ft X 6ft
Wired in series

OR



L = 6ft X 40ft
Quadrupole loop, wired separately

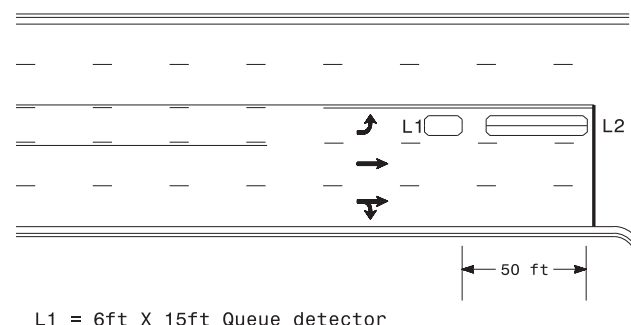
Left Turn Lane Detection



L = 6ft X 40ft Quadrupole loop

Presence Loop Detection

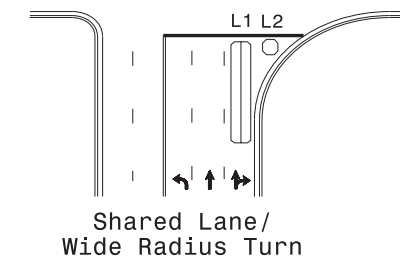
OR



L1 = 6ft X 15ft Queue detector
L2 = 6ft X 40ft Quadrupole loop

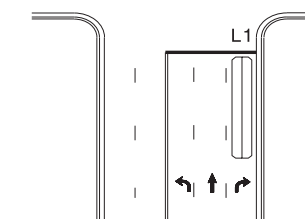
Queue Loop Detection

Right Turn Lane Detection

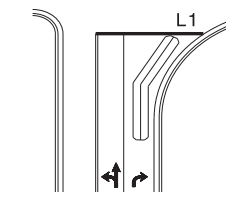


Shared Lane/
Wide Radius Turn

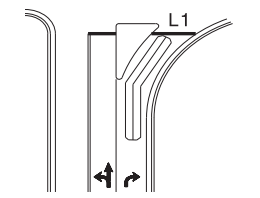
L1 = 6ft X 40ft Quadrupole loop
L2 = 6ft X 6ft [Minimum] Presence loop
Wired separately



Standard Turn

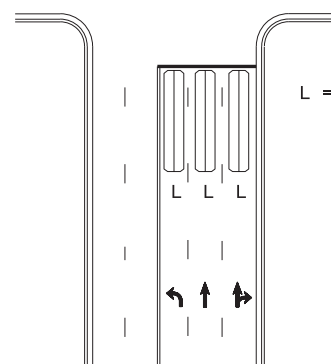


Wide Radius Turn



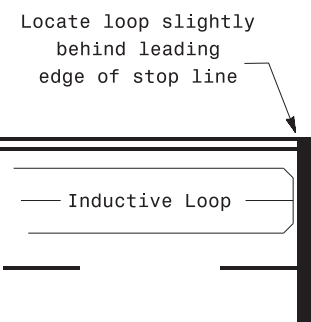
Channelized Turn

Side Street Detection



L = 6ft X 40ft
Quadrupole loop
Wired to separate
detectors/channels

Presence Loop Placement at Stop Lines



Locate loop slightly
behind leading
edge of stop line

- Note:
Loop may be located in advance
of stop line under any of the
following conditions:
- 1) stop line is greater than 15' from edge of intersecting roadway
 - 2) loop detects a permissive or protected/permissive left turn
 - 3) for an exclusive right turn lane

Recommended Number of Turns

Single 6' X 6' loop
(when wired separately):

Length of Lead-in ft	Number of Turns
< 250	3
250-375	4
375-525	5
> 525	6

Quadrupole loops: Use 2-4-2 turns

6' X 15' Loops:
Lead-in < 150', use 2 turns
Lead-in > 150', use 3 turns

750 N. Greenfield Pkwy, Garner, NC 27529

Prepared in the Offices of:

Typical Signal Loop Locations	
PLAN DATE: September 2020	REVIEWED BY: JPG
PREPARED BY: PLA	REVIEWED BY:
SCALE: N/A	REVISIONS: INIT. DATE

9/8/2020
DATE
SIG. INVENTORY NO.