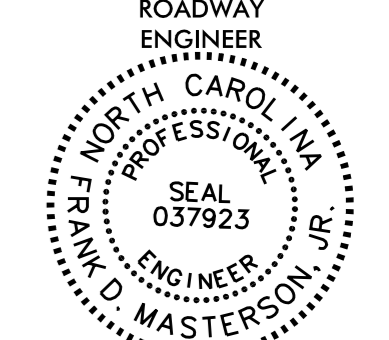
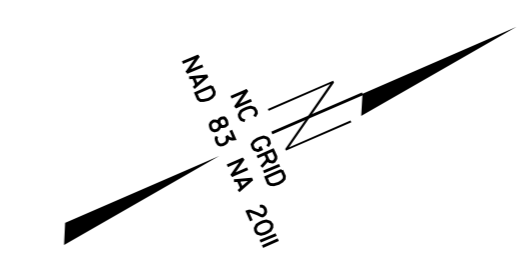
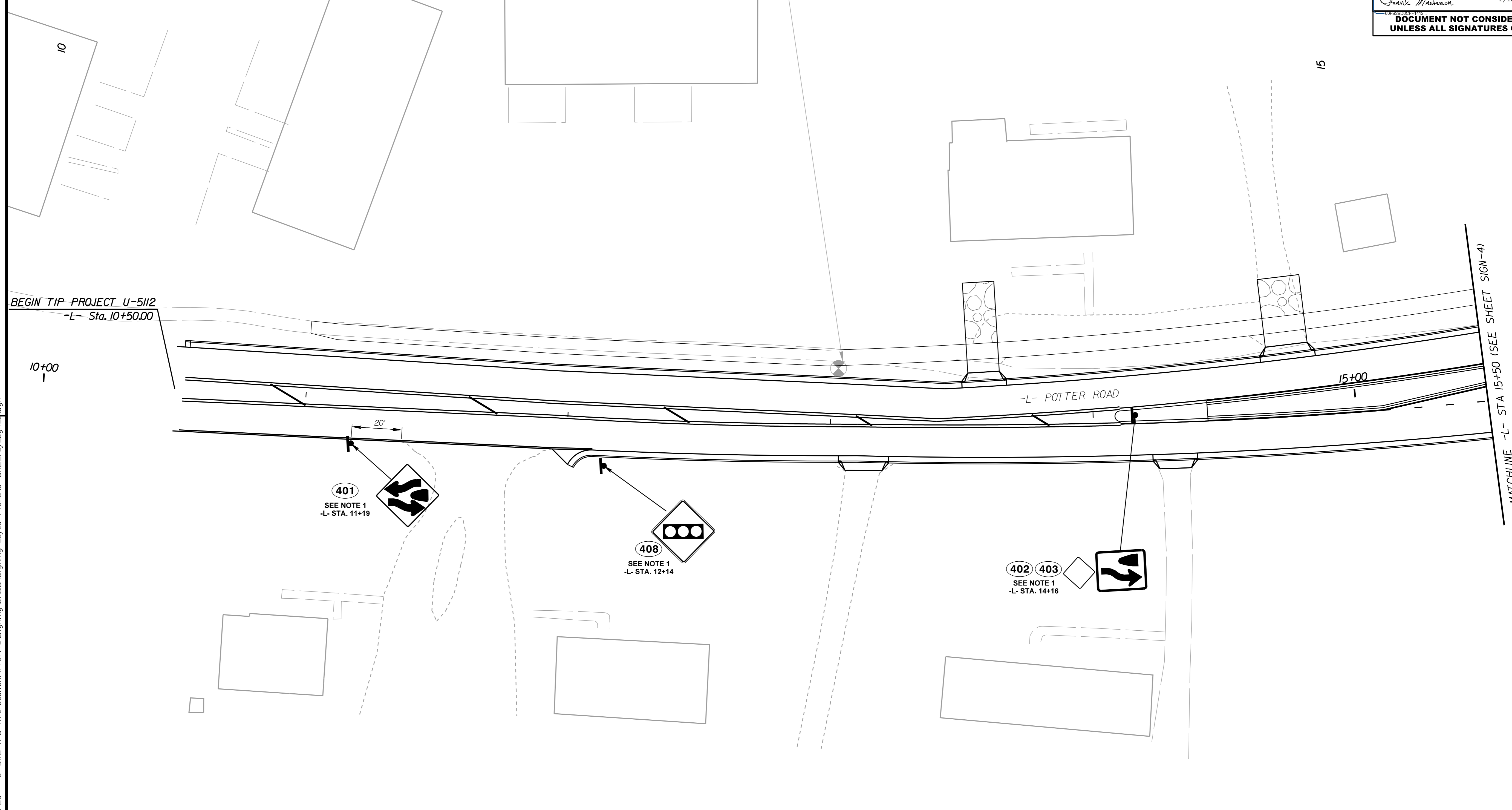


PROJECT REFERENCE NO.	SHEET NO.	PROJECT REFERENCE NO.	SHEET NO.
		U-5112	SIGN-3
Kimley»Horn			
200 S. TRYON ST. • CHARLOTTE, NC 28202			
			
RIGHT-OF-WAY REV.		2/12/2024	
CONST. REV.			
DOCUMENT NOT CONSIDERED FINAL UNLESS ALL SIGNATURES COMPLETED			



REVISIONS



PROJECT NOTES

1. SIGN ERECTION, TYPE E
2. DISPOSAL OF SIGN SYSTEM, U-CHANNEL

12/14/2023 K:\CHL_P\01036720 - U-5112 (P3 Intersection)\Traffic\Signing\CADD\Signing Layout Plans\U-5112_roy_sgn_1.dgn