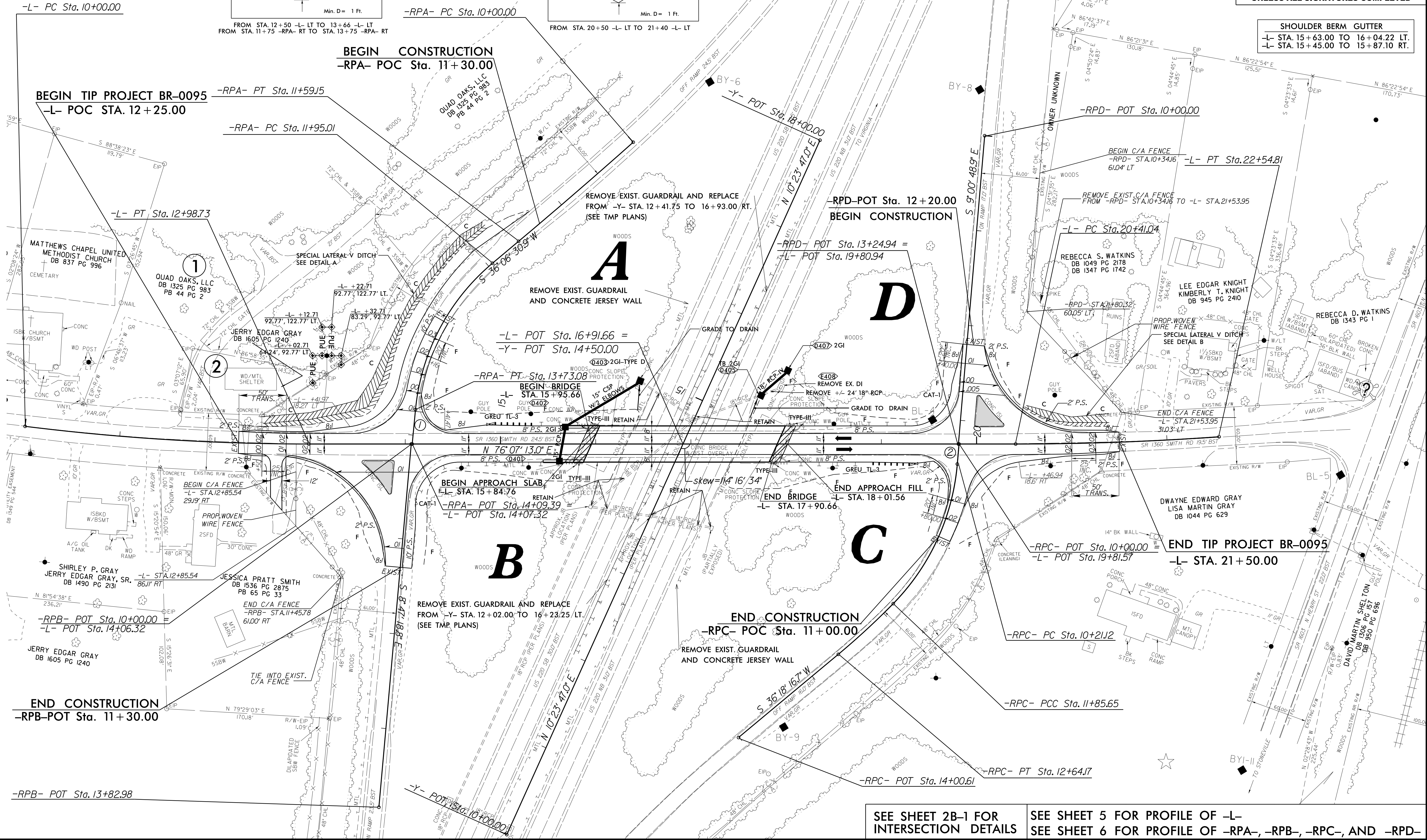
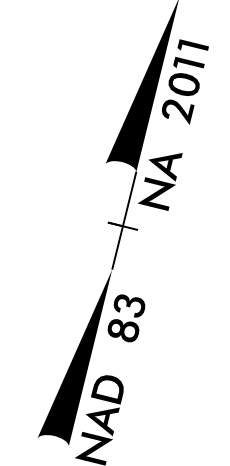
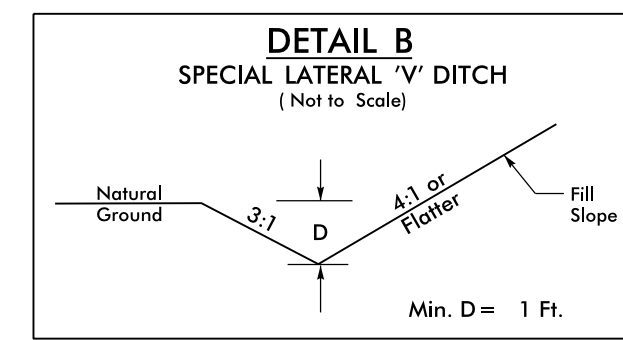
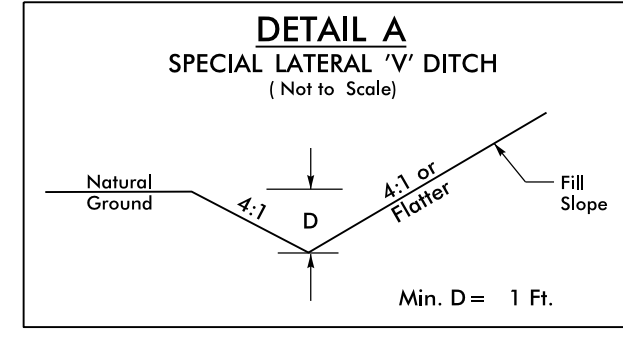


SHOULDER BERM GUTTER
 -L- STA. 15+63.00 TO 16+04.22 LT.
 -L- STA. 15+45.00 TO 15+87.10 RT.

L	RPA	RPC
PI Sta 11+49.56 Δ = 7° 07' 53.6" (LT) D = 2' 23' 14.4" L = 298.73' T = 149.56' R = 2,400.00' SE = EXIST.	PI Sta 12+47.97 Δ = 4° 04' 57.5" (LT) D = 1' 54' 35.5" L = 213.77' T = 106.93' R = 3,000.00' SE = EXIST.	PI Sta 10+79.58 Δ = 1° 39' 28.4" (RT) D = 1' 02' 30.3" L = 159.15' T = 79.58' R = 5,500.00'
	PI Sta 21+47.97 Δ = 4° 04' 57.5" (LT) D = 1' 54' 35.5" L = 213.77' T = 106.93' R = 3,000.00' SE = EXIST.	PI Sta 12+88.81 Δ = 44° 31' 04.7" (LT) D = 25° 00' 01.2" L = 178.07' T = 93.80' R = 2,291.8'
		PI Sta 11+06.81 Δ = 39° 30' 07.8" (RT) D = 24° 00' 36.3" L = 164.52' T = 85.68' R = 2,386.63'
		PI Sta 12+24.94 Δ = 5° 46' 40.5" (RT) D = 7° 21' 30.7" L = 78.52' T = 39.29' R = 778.63'



REVISIONS

8/17/199
 02 JAN 2024 10:23 BR0095_Rdy_psh04.dgn
 \$\$\$\$\$\$SERIAL\$\$\$\$\$

SEE SHEET 2B-1 FOR INTERSECTION DETAILS
 SEE SHEET 5 FOR PROFILE OF -L-
 SEE SHEET 6 FOR PROFILE OF -RPA-, -RPB-, -RPC-, AND -RPD-