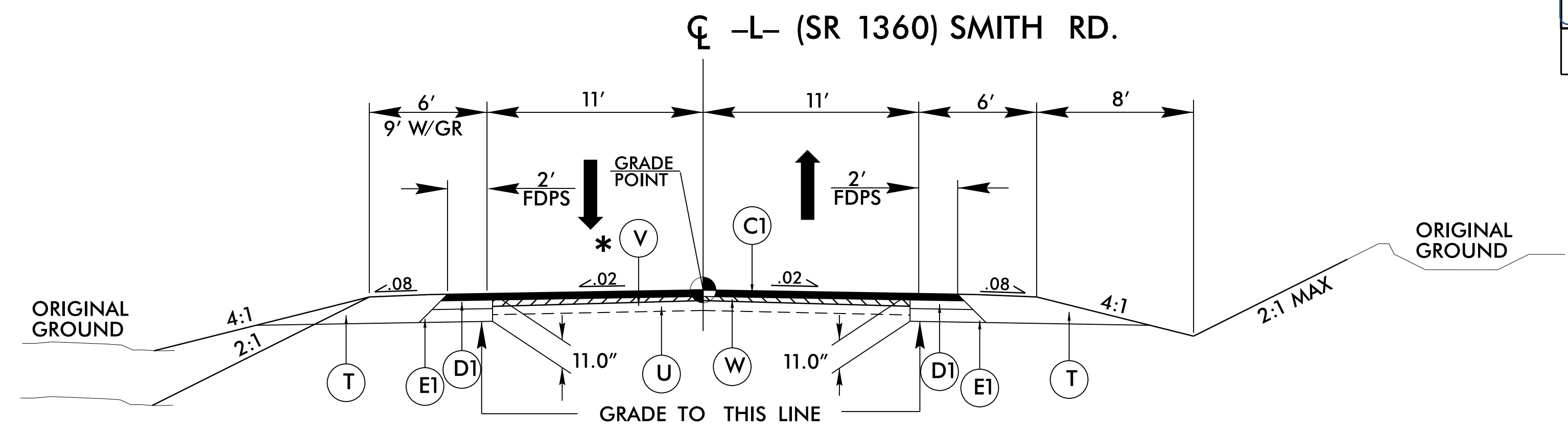


FINAL PAVEMENT SCHEDULE	
C1	PROP. APPROX. 3" ASPHALT CONCRETE SURFACE COURSE, TYPE S9.5B, AT AN AVERAGE RATE OF 165 LBS. PER SQ. YD. IN EACH OF TWO LAYERS.
C2	PROP. VAR. DEPTH ASPHALT CONCRETE SURFACE COURSE, TYPE S9.5B, AT AN AVERAGE RATE OF 110 LBS. PER SQ. YD. PER 1" DEPTH. TO BE PLACED IN LAYERS NOT TO EXCEED 1 1/2" IN DEPTH.
D1	PROP. APPROX. 4" ASPHALT CONCRETE INTERMEDIATE COURSE, TYPE I19.0C, AT AN AVERAGE RATE OF 456 LBS. PER SQ. YD.
D2	PROP. VAR. DEPTH ASPHALT CONCRETE INTERMEDIATE COURSE, TYPE I19.0C, AT AN AVERAGE RATE OF 114 LBS. PER SQ. YD. PER 1" DEPTH TO BE PLACED IN LAYERS NOT LESS THAN 2 1/2" OR GREATER THAN 4" IN DEPTH.
E1	PROP. APPROX. 4" ASPHALT CONCRETE BASE COURSE, TYPE B25.0C, AT AN AVERAGE RATE OF 456 LBS. PER SQ. YD.
E2	PROP. VAR. DEPTH ASPHALT CONCRETE BASE COURSE, TYPE B25.0C, AT AN AVERAGE RATE OF 114 LBS. PER SQ. YD. PER 1" DEPTH. TO BE PLACED IN LAYERS NOT LESS THAN 3" IN DEPTH OR GREATER THAN 5 1/2" IN DEPTH.
R1	SHOULDER BERM GUTTER
T	EARTH MATERIAL.
U	EXISTING PAVEMENT.
V	MILLING ASPHALT PAVEMENT, 1.5" DEPTH
W	VARIABLE DEPTH ASPHALT PAVEMENT. (SEE DETAIL SHOWING METHOD OF WEDGING)

NOTE: PAVEMENT EDGE SLOPES ARE 1:1 UNLESS SHOWN OTHERWISE.

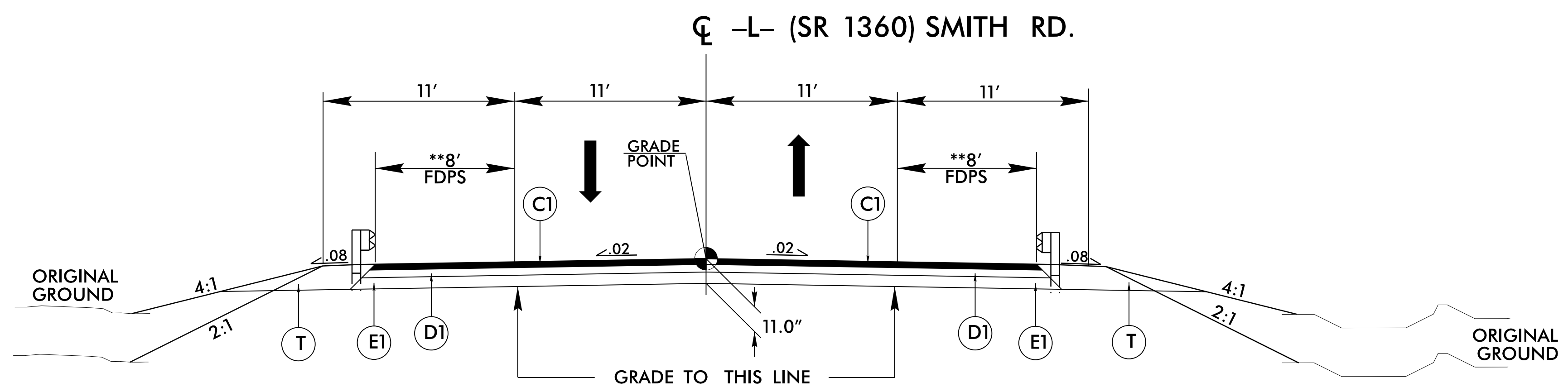


TYPICAL SECTION NO. 1

- L- 12+25.00 TO -L- 12+75.00
- TRANSITION FROM EXISTING TO TYPICAL SECTION NO. 1
- L- STA. 12+75.00 TO -L- STA. 14+25.00
- L- STA. 19+50.00 TO -L- STA. 21+00.00
- L- STA. 21+00.00 TO -L- STA. 21+50.00
- TRANSITION FROM TYPICAL SECTION NO. 1 TO EXISTING

*** MILLING LIMITS**

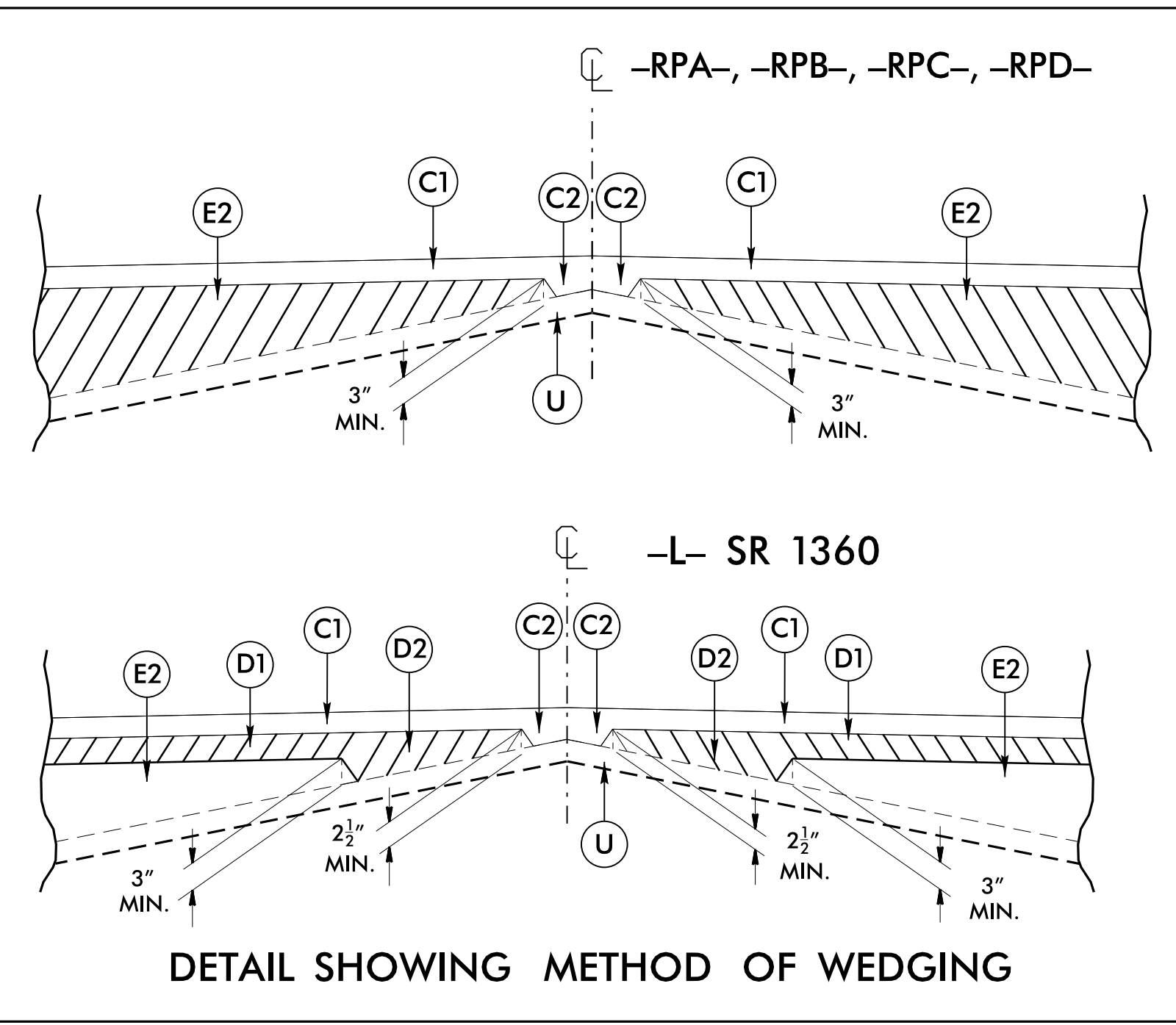
-L- STA. 12+25.00 TO STA. 12+63.17
-L- STA. 20+69.52 TO STA. 21+50.00



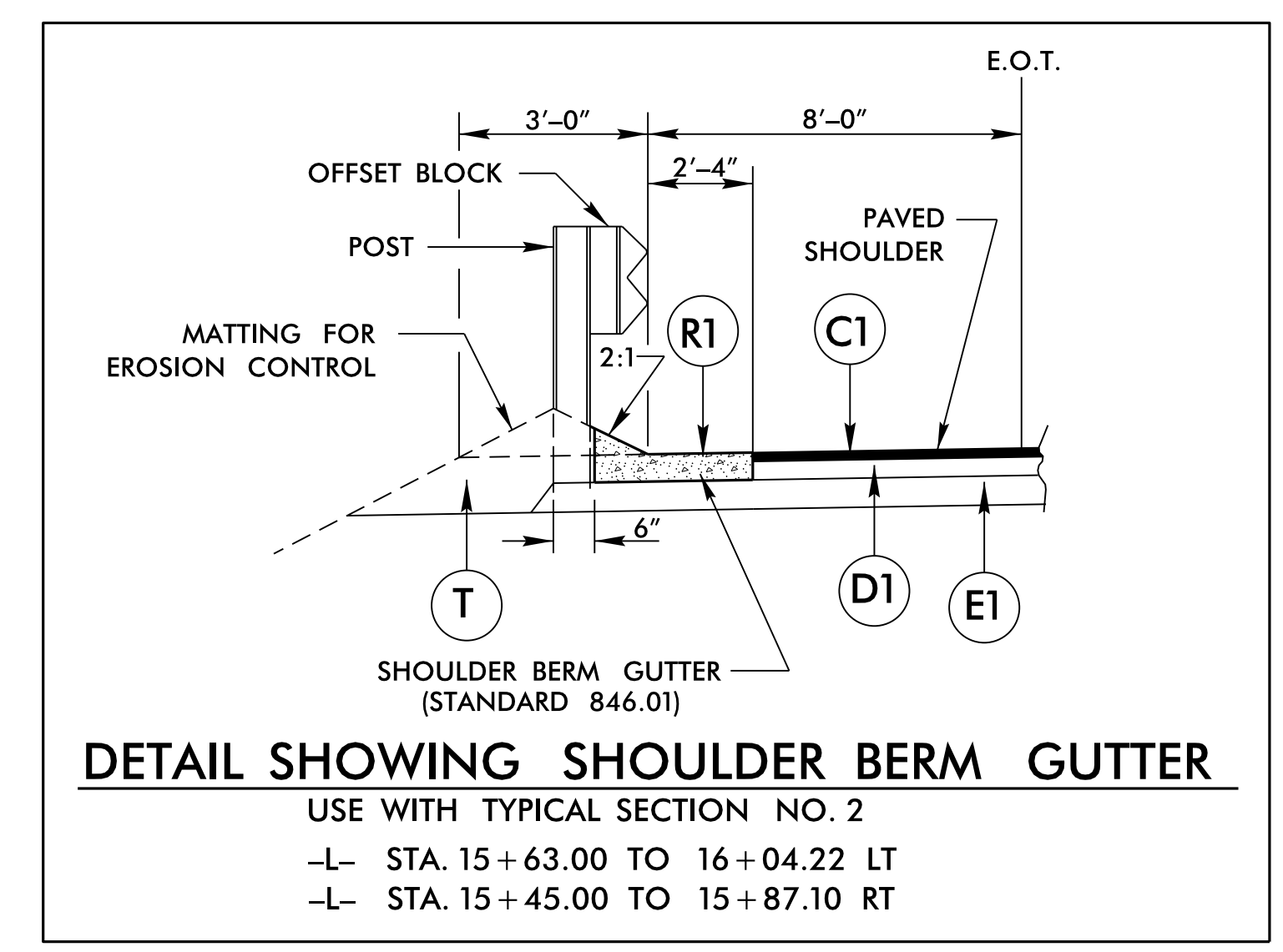
TYPICAL SECTION NO. 2

- L- STA. 14+25.00 TO 15+95.66 (BEGIN BRIDGE)
- L- STA. 17+90.66 (END BRIDGE) TO 19+50.00

** PAVE TO FACE OF GUARDRAIL



DETAIL SHOWING METHOD OF WEDGING



DETAIL SHOWING SHOULDER BERM GUTTER
USE WITH TYPICAL SECTION NO. 2
-L- STA. 15+63.00 TO 16+04.22 LT
-L- STA. 15+45.00 TO 15+87.10 RT

6/2/2023 13:44 BR0095_Rd4_tjip.dgn