



STATE OF NORTH CAROLINA
DEPARTMENT OF TRANSPORTATION

ROY COOPER
GOVERNOR

JAMES H. TROGDON, III
SECRETARY

November 5, 2018

MEMORANDUM TO: Tierre Peterson, PE
Team Leader, PEF Coordination
Structures Management Unit

FROM: Craig Haden
GeoEnvironmental Project Manager
GeoEnvironmental Section
Geotechnical Engineering Unit

TIP NO: BR-0026
WBS: 67026.1.1
COUNTY: JOHNSTON
DIVISION: 4
DESCRIPTION: Replace Bridge # 500050 on NC 210 over Middle Creek

SUBJECT: **GeoEnvironmental Phase I**

DocuSigned by:
Craig Haden 11/5/2018
AE4AE3FF131F404...

The GeoEnvironmental Section of the Geotechnical Engineering Unit performed a Phase I field investigation on 10/30/2018 for the above referenced project to identify geoenvironmental sites of concern. The purpose of this report is to document sites of concern within the project study area that are or may be contaminated. These sites of concern should be included in the environmental planning document in an effort to assist the project stakeholders in reducing or avoiding impacts to these sites. Sites of concern may include, but are not limited to, underground storage tank (UST) sites, dry cleaning facilities, hazardous waste sites, regulated landfills and unregulated dumpsites.

Findings

No Sites of concern were identified within the proposed study area as shown in the figure below. We don't anticipate any monetary or scheduling impacts resulting from geoenvironmental sites of concern.

Please note that discovery of sites not recorded by regulatory agencies and not reasonably discernible during the project reconnaissance may occur. The GeoEnvironmental Section should be notified immediately after discovery of such sites so their potential impact(s) may be assessed.

If there are questions regarding the geoenvironmental issues, please contact me, at (919) 707-6871.

cc:
John Pilipchuk, LG, PE, State Geotechnical Engineer
Brian Hanks, PE, State Structures Engineer
Dale Burton PE, PLS, State Locations and Surveys Engineer
Carl Barclay, PE, State Utilities Manager

Mailing Address:
NC DEPARTMENT OF TRANSPORTATION
GEOTECHNICAL ENGINEERING UNIT
1589 MAIL SERVICE CENTER
RALEIGH NC 27699-1589

Telephone: 919-707-6850
Fax: 919-250-4237
Customer Service: 1-877-368-4968

Website: www.ncdot.gov

Location:
CENTURY CENTER COMPLEX
ENTRANCE B-2
1020 BIRCH RIDGE DRIVE
RALEIGH NC

Corey McLamb, PE, Division Construction Engineer

Lloyd Johnston, Division Right of Way Agent

Chris Kreider, PE, Geotechnical Regional Manager

Neil Roberson, LG, Regional Geological Engineer

Tracy Clark, ROW Unit, Negotiations, Asst. State Negotiator-East

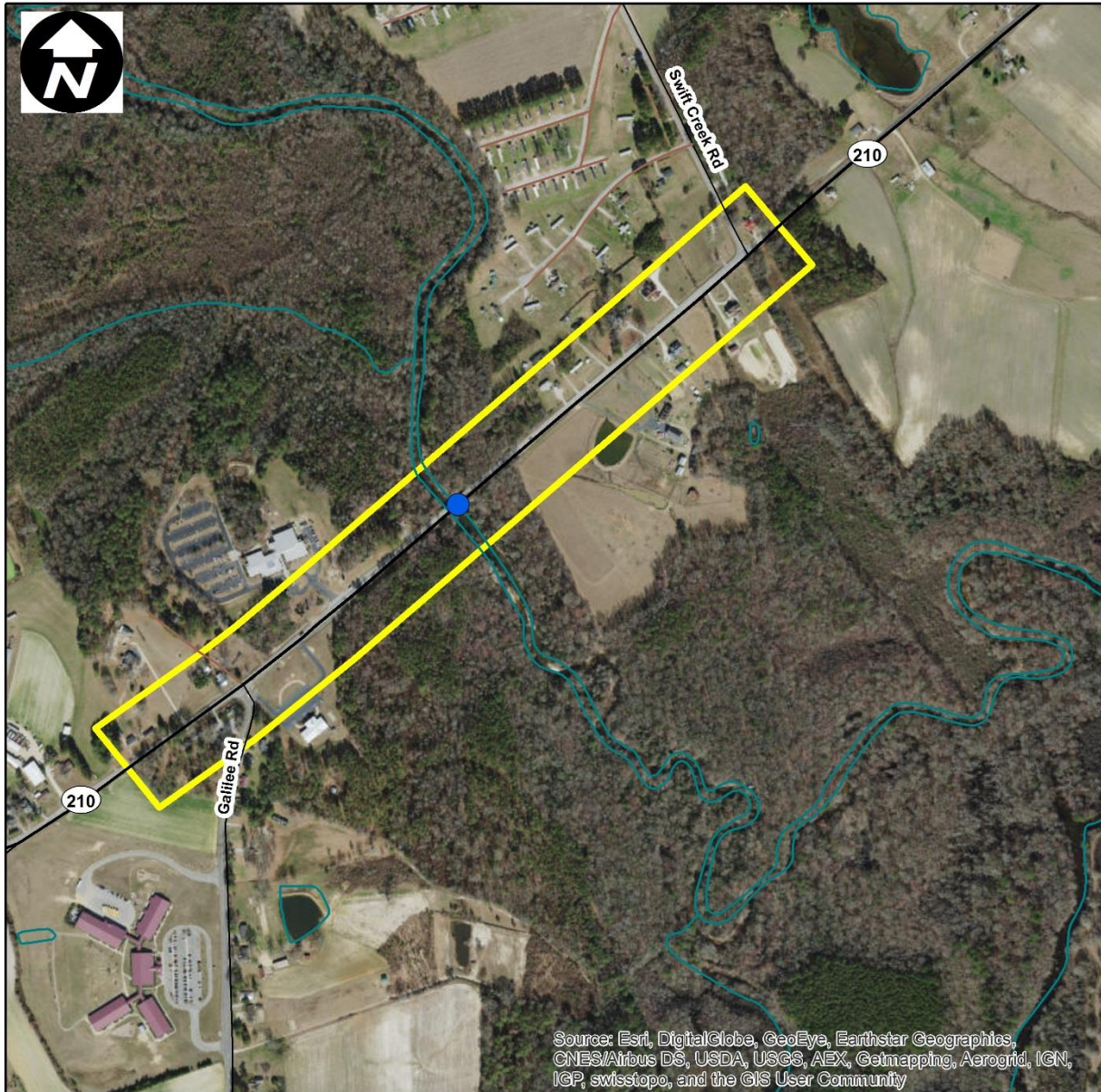
row-notify@ncdot.gov

roadwaydesign@ncdot.gov

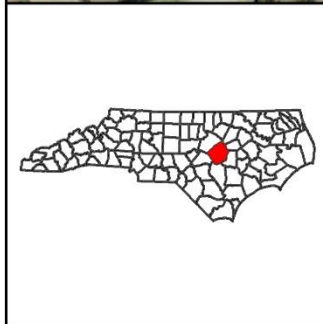
hydraulics_notify@ncdot.gov

File

Appendix A
Location of GeoEnvironmental Sites of Concern



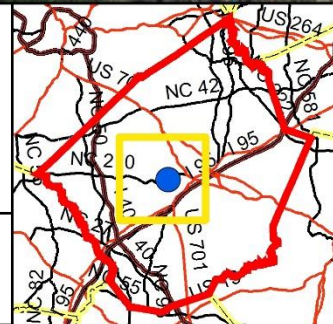
Source: Esri, DigitalGlobe, GeoEye, Earthstar Geographics, CNES/Airbus DS, USDA, USGS, AEX, Getmapping, Aerogrid, IGN, IGP, swisstopo, and the GIS User Community



Project 67026.1.1 (TIP # BR-0026)
Replace Bridge # 50050 on NC 210 over
Middle Creek
Johnston County



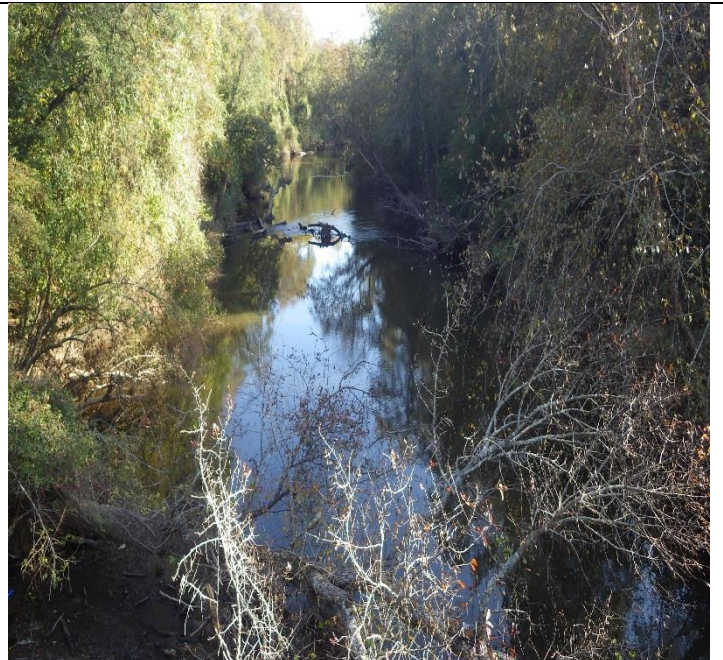
NC Department of Transportation
Geotechnical Engineering Unit
GeoEnvironmental Section





View to the northeast

View to the southwest



Upstream view

Downstream view