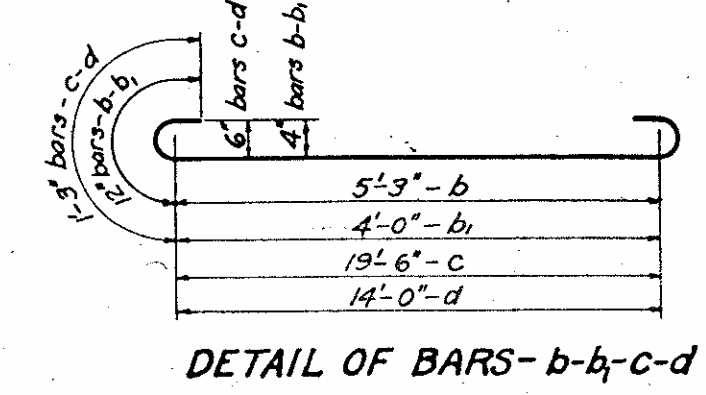
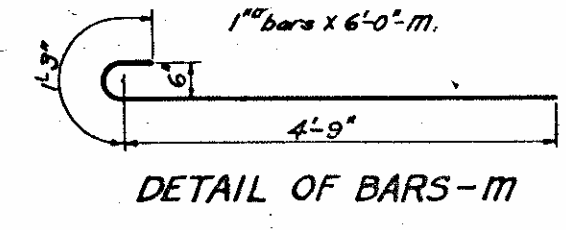
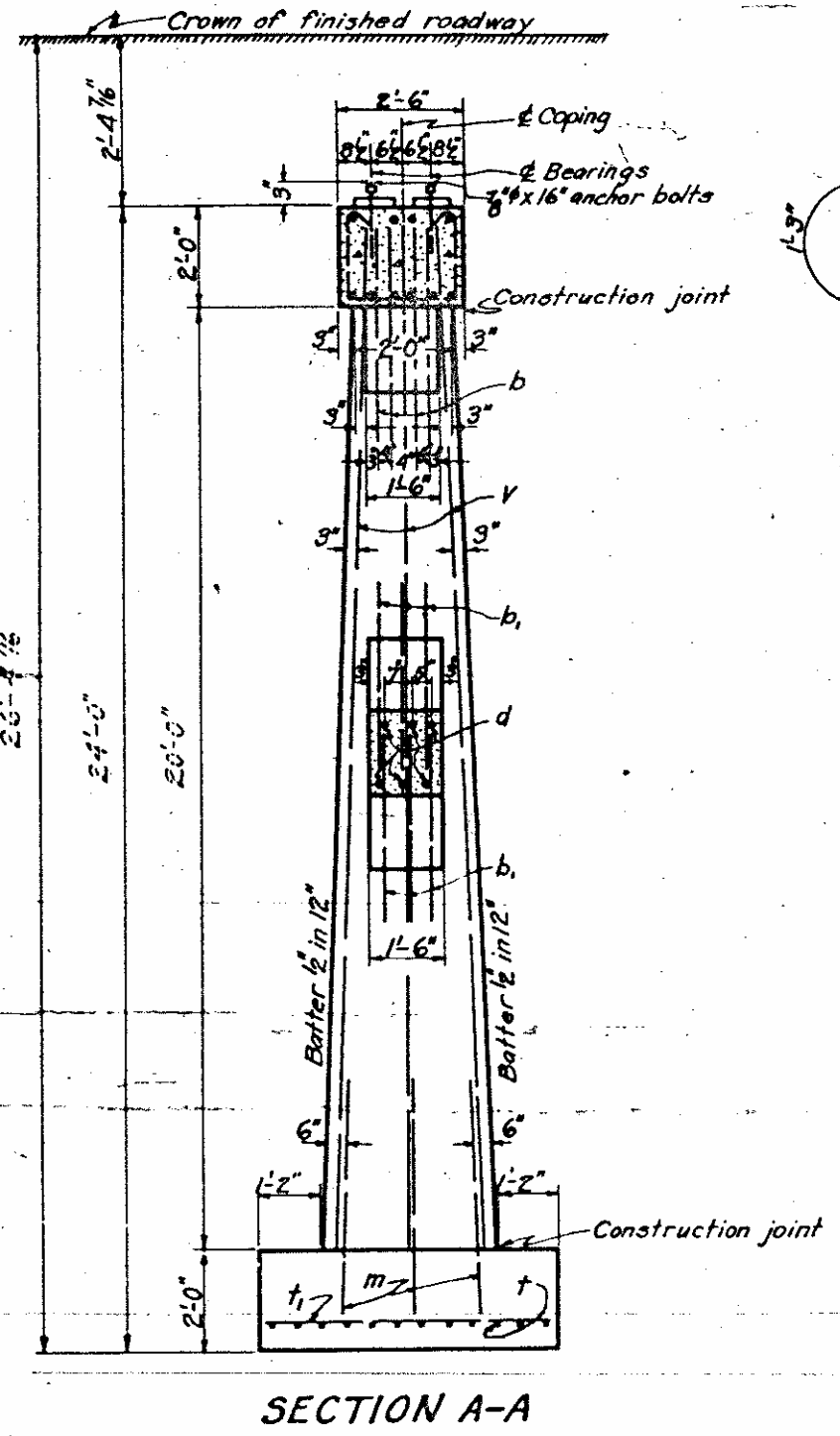
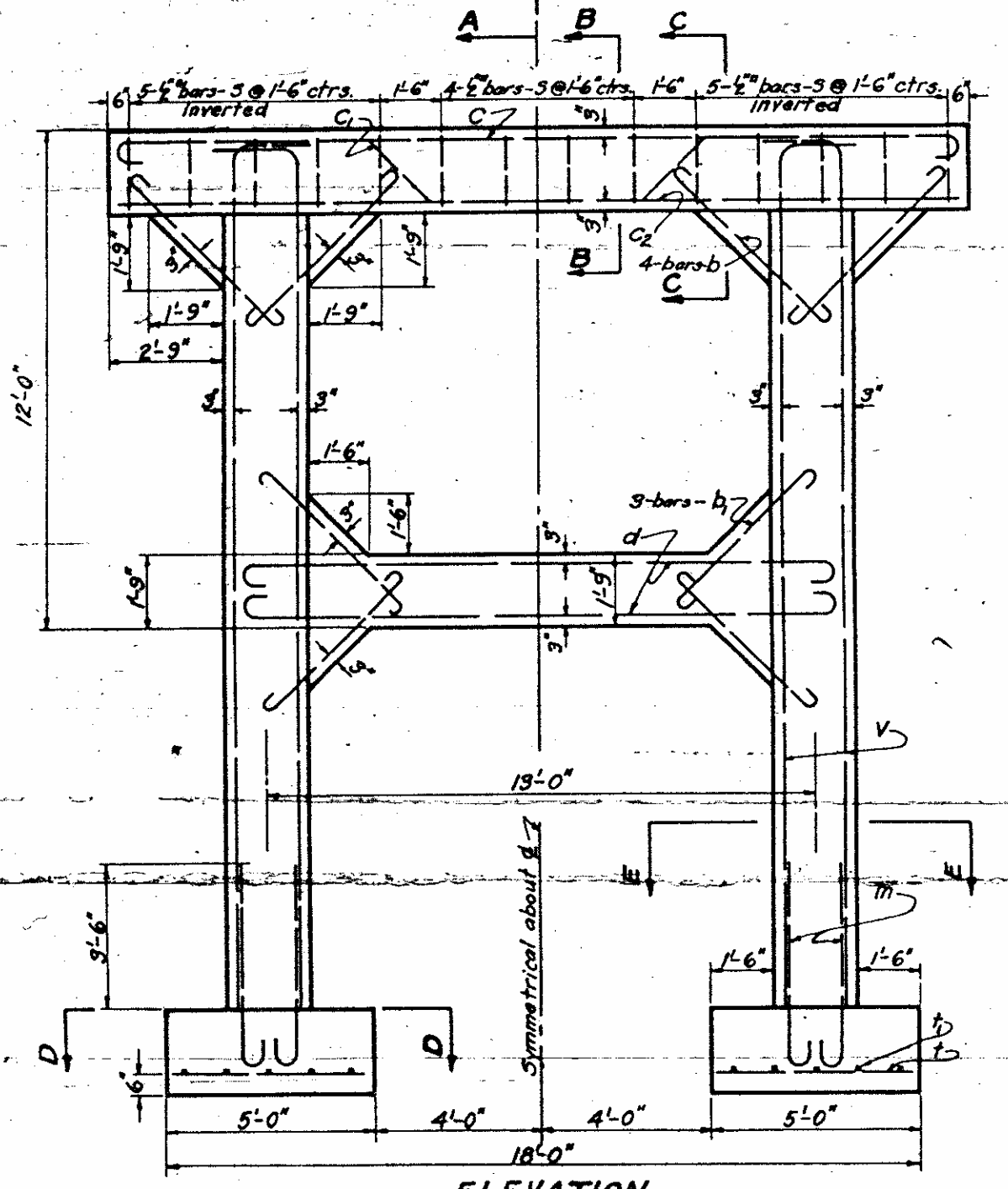
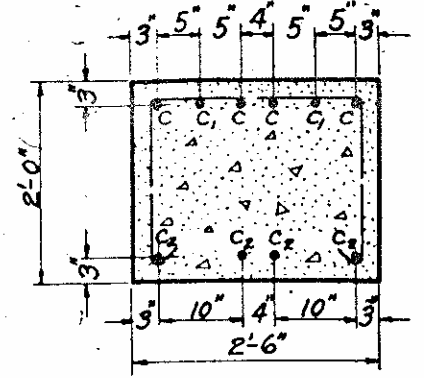
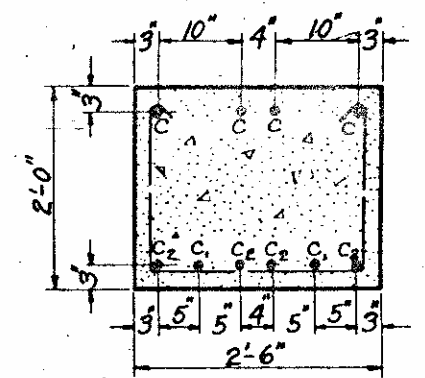
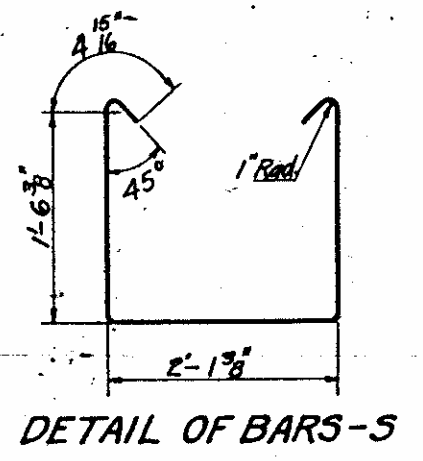
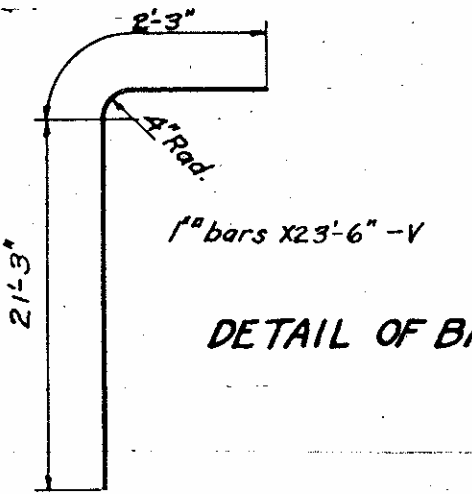


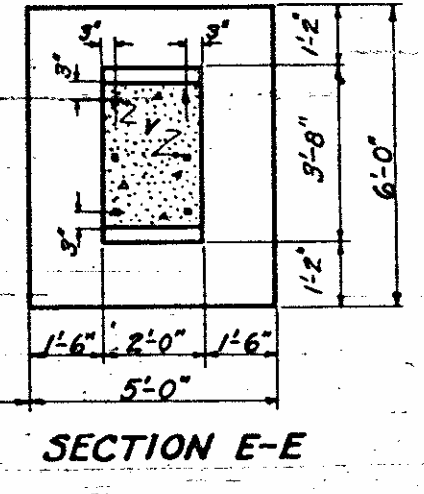
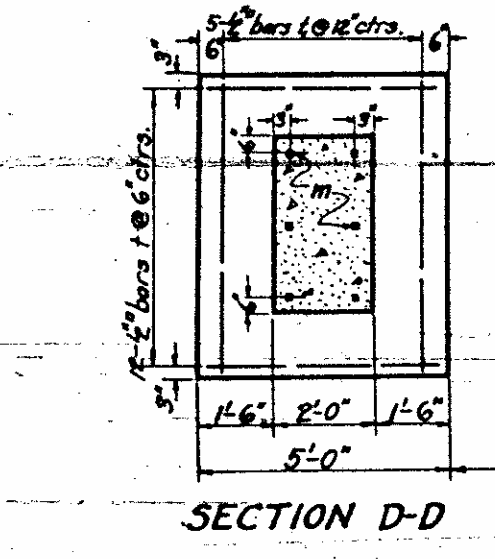
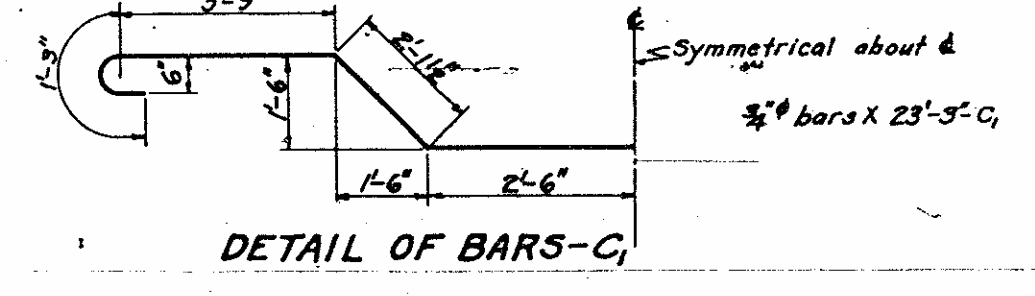
Note: Weights of masonry plates and anchor bolts included in weight of structural steel for superstructure. See sheet NRS 5



1/2" bars x 7'-3"-b
 1/2" bars x 6'-0"-b
 3/4" bars x 22'-0"-c
 3/4" bars x 16'-6"-d



1/2" bars x 6'-0"-s



For GENERAL NOTE and DESIGN DATA See sheet NRS. 68

Note: Footings for pier No. 2 to be carried down at least 6' into rock with a minimum thickness of 2'-0".

BILL OF MATERIAL ONE PIER				
Bar	Nr	Size	Length	Weight
b	16	1/2"	7'-3"	99
b ₁	12	1/2"	6'-0"	61
c	4	3/4"	22'-0"	132
c ₁	2	3/4"	25'-3"	70
c ₂	4	3/4"	20'-0"	120
d	6	3/4"	16'-6"	149
m	12	1"	6'-0"	245
s	14	1/2"	6'-0"	71
t	24	1/2"	4'-6"	92
t ₁	10	1/2"	5'-6"	47
v	12	1"	23'-6"	959
Reinforcing Steel Lbs.			2045	
Class A Concrete Cu.Yds.			12.5	
Concrete per ft. depth of one footing Cu.Yds.			1.11	

PROJECT NO. 2390
 JOHNSTON COUNTY
 STATION 919+07
 PIER No. 2 or 3

STATE OF NORTH CAROLINA
 STATE HIGHWAY AND
 PUBLIC WORKS COMMISSION
 BALDWIN

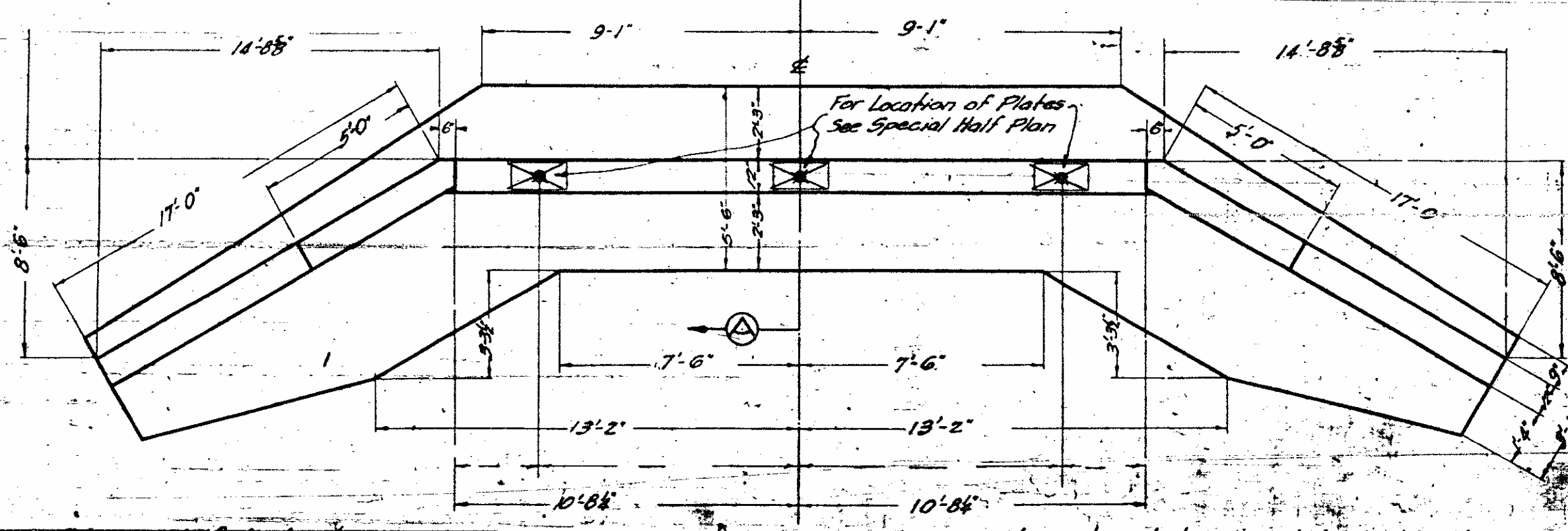
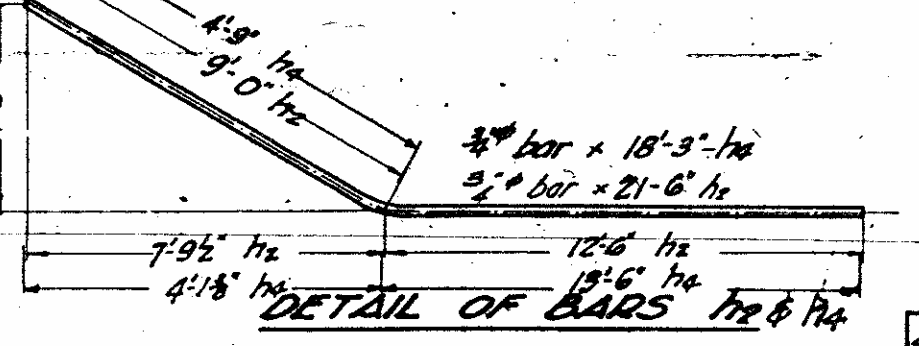
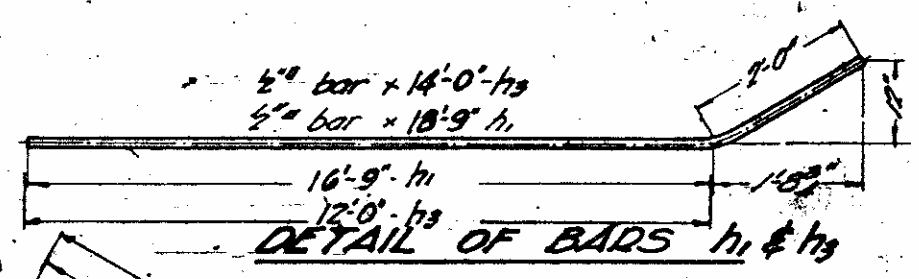
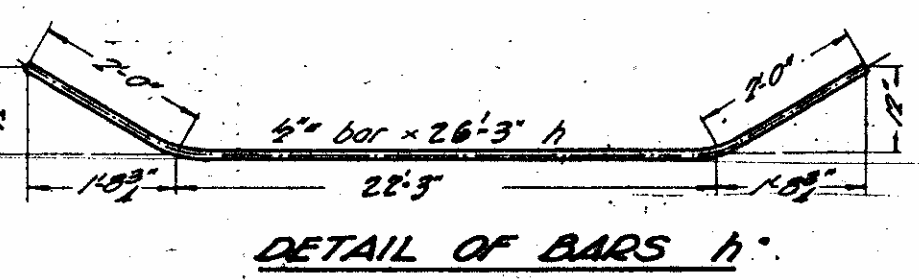
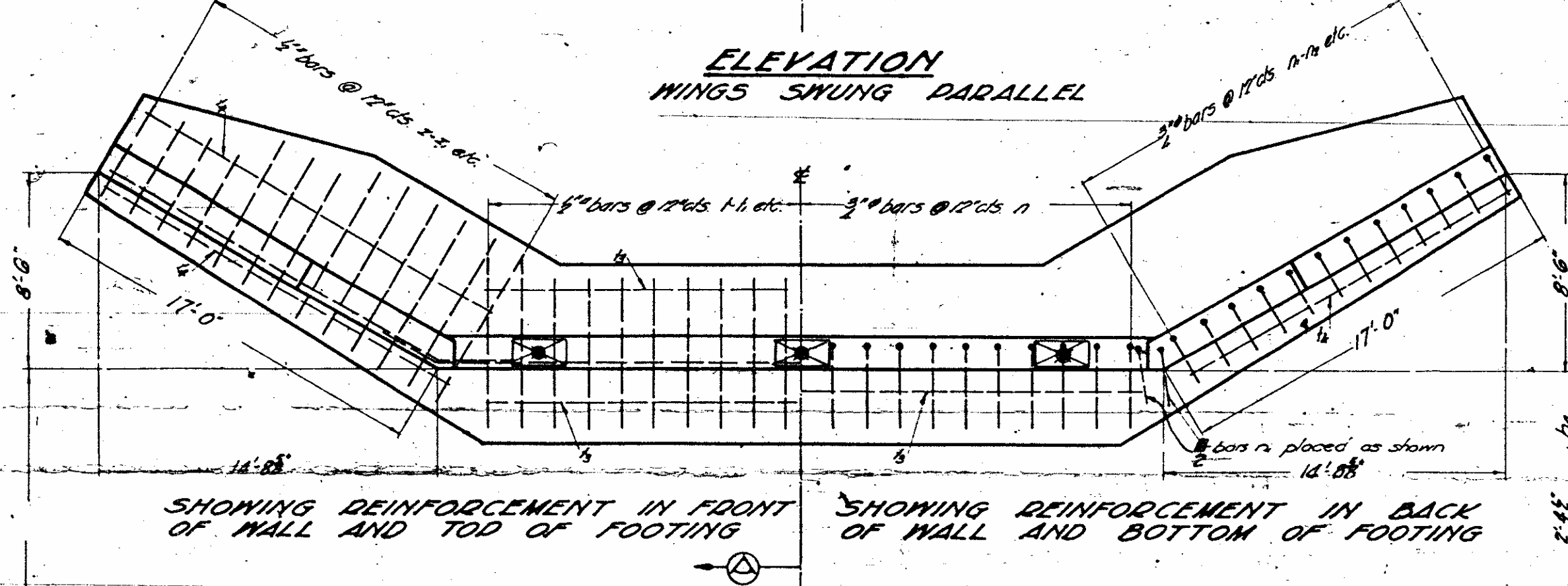
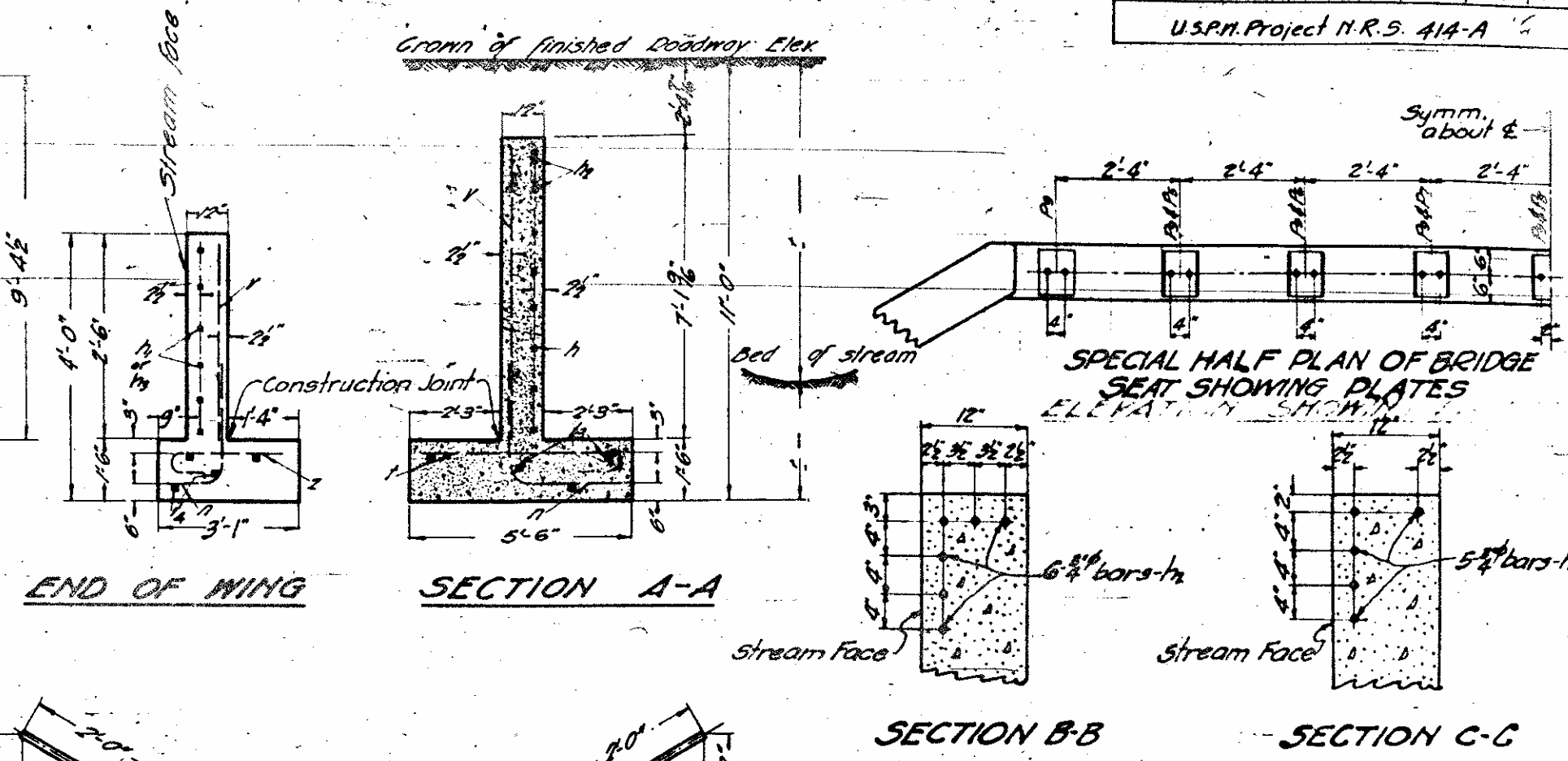
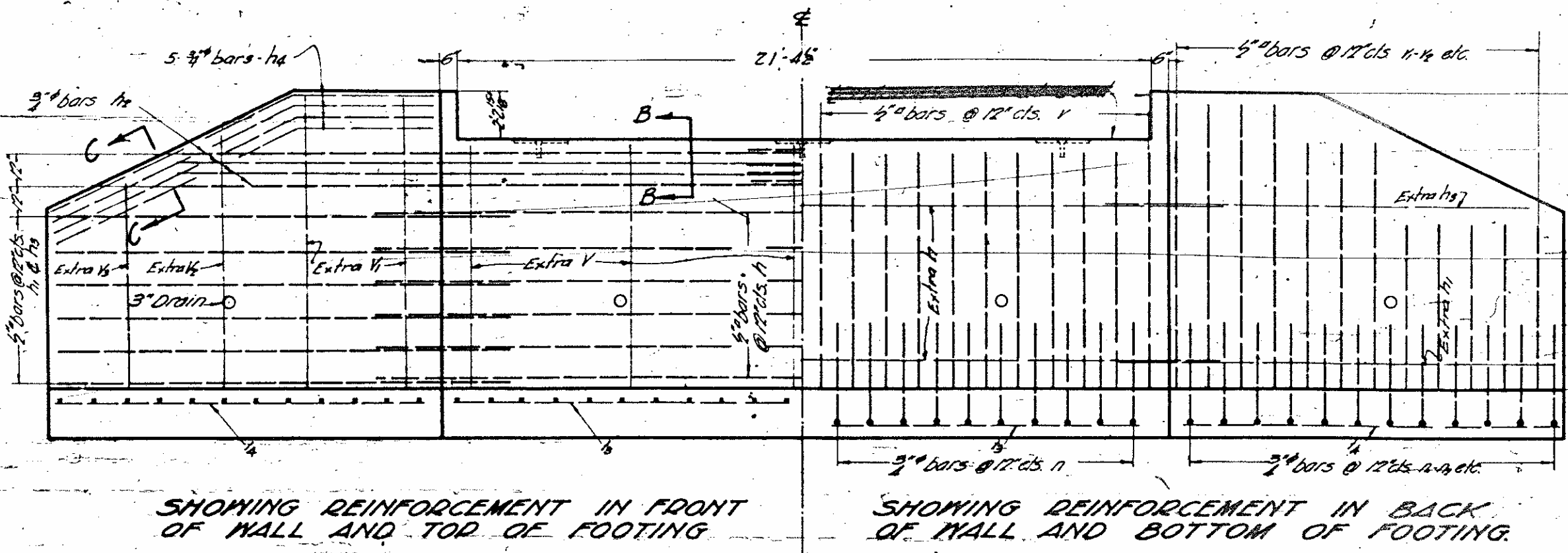
DETAILS OF
 R.C. POST & BEAM PIER
 MARCH 1934

Submitted by: *H. P. Carleton* BRIDGE ENGINEER
 Approved by: *John D. Wallace* STATE HIGHWAY ENGINEER

SPECIAL	ASSEMBLED BY: <i>H. P. Carleton</i>	DATE: April 5, 1934
	CHECKED BY: <i>R. P. Stone III</i>	DATE: April 5, 1934
STANDARD	DESIGNED BY: <i>H. P. Carleton</i>	DATE: Mar. 1934
	DRAWN BY: <i>H. P. Carleton</i>	DATE: Mar. 1934
	TRACKED BY: <i>H. P. Carleton</i>	DATE: Mar. 1934
	CHECKED BY: <i>R. P. Stone III</i>	DATE: April 5, 1934

FED. ROAD DIST. NO.	STATE	PROJECT NO.	FISCAL YEAR	SHEET NO.	TOTAL SHEETS
10	N. C.	2390	1934	58	70

U.S.P.N. Project N.R.S. 414-A



DESIGN DATA

Specifications N.C. State Highway Commission

Equivalent Fluid Pressure of earth 30 lbs per cu ft.

Steel in tension 16000 lbs per sq in.

Concrete in compression 650 lbs per sq in.

Shear Class 14 concrete 40 lbs per sq in.

This design is based on the net area of bars as follows: $\frac{1}{2}$ " = 0.25 sq in. $\frac{3}{4}$ " = 0.442 sq in.

GENERAL NOTE

Class 14 Concrete to be used thruout. Max. size of coarse aggregate to be 1 1/2".

All reinforcing steel shall be deformed bars.

Square imbeded bars are not to be considered deformed bars.

All dimensions relative to reinforcement are to centers of bars.

No splices of bars will be permitted other than those shown on plans.

All material and workmanship as per specifications of the N.C. State Highway Commission.

3" drains to be placed at 10'-0" centers in wings and abutments just above the present ground line.

All reinforcing steel to be securely held in correct position.

The following extra bars are provided for holding reinforcing steel in correct position:

2h, 2h1, 2h2, 2h3, 2h4, 2h5, 2h6, 2h7, 2h8, 2h9, 2h10, 2h11, 2h12, 2h13, 2h14, 2h15, 2h16, 2h17, 2h18, 2h19, 2h20, 2h21, 2h22, 2h23, 2h24, 2h25, 2h26, 2h27, 2h28, 2h29, 2h30, 2h31, 2h32, 2h33, 2h34, 2h35, 2h36, 2h37, 2h38, 2h39, 2h40, 2h41, 2h42, 2h43, 2h44, 2h45, 2h46, 2h47, 2h48, 2h49, 2h50, 2h51, 2h52, 2h53, 2h54, 2h55, 2h56, 2h57, 2h58, 2h59, 2h60, 2h61, 2h62, 2h63, 2h64, 2h65, 2h66, 2h67, 2h68, 2h69, 2h70, 2h71, 2h72, 2h73, 2h74, 2h75, 2h76, 2h77, 2h78, 2h79, 2h80, 2h81, 2h82, 2h83, 2h84, 2h85, 2h86, 2h87, 2h88, 2h89, 2h90, 2h91, 2h92, 2h93, 2h94, 2h95, 2h96, 2h97, 2h98, 2h99, 2h100, 2h101, 2h102, 2h103, 2h104, 2h105, 2h106, 2h107, 2h108, 2h109, 2h110, 2h111, 2h112, 2h113, 2h114, 2h115, 2h116, 2h117, 2h118, 2h119, 2h120, 2h121, 2h122, 2h123, 2h124, 2h125, 2h126, 2h127, 2h128, 2h129, 2h130, 2h131, 2h132, 2h133, 2h134, 2h135, 2h136, 2h137, 2h138, 2h139, 2h140, 2h141, 2h142, 2h143, 2h144, 2h145, 2h146, 2h147, 2h148, 2h149, 2h150, 2h151, 2h152, 2h153, 2h154, 2h155, 2h156, 2h157, 2h158, 2h159, 2h160, 2h161, 2h162, 2h163, 2h164, 2h165, 2h166, 2h167, 2h168, 2h169, 2h170, 2h171, 2h172, 2h173, 2h174, 2h175, 2h176, 2h177, 2h178, 2h179, 2h180, 2h181, 2h182, 2h183, 2h184, 2h185, 2h186, 2h187, 2h188, 2h189, 2h190, 2h191, 2h192, 2h193, 2h194, 2h195, 2h196, 2h197, 2h198, 2h199, 2h200, 2h201, 2h202, 2h203, 2h204, 2h205, 2h206, 2h207, 2h208, 2h209, 2h210, 2h211, 2h212, 2h213, 2h214, 2h215, 2h216, 2h217, 2h218, 2h219, 2h220, 2h221, 2h222, 2h223, 2h224, 2h225, 2h226, 2h227, 2h228, 2h229, 2h230, 2h231, 2h232, 2h233, 2h234, 2h235, 2h236, 2h237, 2h238, 2h239, 2h240, 2h241, 2h242, 2h243, 2h244, 2h245, 2h246, 2h247, 2h248, 2h249, 2h250, 2h251, 2h252, 2h253, 2h254, 2h255, 2h256, 2h257, 2h258, 2h259, 2h260, 2h261, 2h262, 2h263, 2h264, 2h265, 2h266, 2h267, 2h268, 2h269, 2h270, 2h271, 2h272, 2h273, 2h274, 2h275, 2h276, 2h277, 2h278, 2h279, 2h280, 2h281, 2h282, 2h283, 2h284, 2h285, 2h286, 2h287, 2h288, 2h289, 2h290, 2h291, 2h292, 2h293, 2h294, 2h295, 2h296, 2h297, 2h298, 2h299, 2h300, 2h301, 2h302, 2h303, 2h304, 2h305, 2h306, 2h307, 2h308, 2h309, 2h310, 2h311, 2h312, 2h313, 2h314, 2h315, 2h316, 2h317, 2h318, 2h319, 2h320, 2h321, 2h322, 2h323, 2h324, 2h325, 2h326, 2h327, 2h328, 2h329, 2h330, 2h331, 2h332, 2h333, 2h334, 2h335, 2h336, 2h337, 2h338, 2h339, 2h340, 2h341, 2h342, 2h343, 2h344, 2h345, 2h346, 2h347, 2h348, 2h349, 2h350, 2h351, 2h352, 2h353, 2h354, 2h355, 2h356, 2h357, 2h358, 2h359, 2h360, 2h361, 2h362, 2h363, 2h364, 2h365, 2h366, 2h367, 2h368, 2h369, 2h370, 2h371, 2h372, 2h373, 2h374, 2h375, 2h376, 2h377, 2h378, 2h379, 2h380, 2h381, 2h382, 2h383, 2h384, 2h385, 2h386, 2h387, 2h388, 2h389, 2h390, 2h391, 2h392, 2h393, 2h394, 2h395, 2h396, 2h397, 2h398, 2h399, 2h400, 2h401, 2h402, 2h403, 2h404, 2h405, 2h406, 2h407, 2h408, 2h409, 2h410, 2h411, 2h412, 2h413, 2h414, 2h415, 2h416, 2h417, 2h418, 2h419, 2h420, 2h421, 2h422, 2h423, 2h424, 2h425, 2h426, 2h427, 2h428, 2h429, 2h430, 2h431, 2h432, 2h433, 2h434, 2h435, 2h436, 2h437, 2h438, 2h439, 2h440, 2h441, 2h442, 2h443, 2h444, 2h445, 2h446, 2h447, 2h448, 2h449, 2h450, 2h451, 2h452, 2h453, 2h454, 2h455, 2h456, 2h457, 2h458, 2h459, 2h460, 2h461, 2h462, 2h463, 2h464, 2h465, 2h466, 2h467, 2h468, 2h469, 2h470, 2h471, 2h472, 2h473, 2h474, 2h475, 2h476, 2h477, 2h478, 2h479, 2h480, 2h481, 2h482, 2h483, 2h484, 2h485, 2h486, 2h487, 2h488, 2h489, 2h490, 2h491, 2h492, 2h493, 2h494, 2h495, 2h496, 2h497, 2h498, 2h499, 2h500, 2h501, 2h502, 2h503, 2h504, 2h505, 2h506, 2h507, 2h508, 2h509, 2h510, 2h511, 2h512, 2h513, 2h514, 2h515, 2h516, 2h517, 2h518, 2h519, 2h520, 2h521, 2h522, 2h523, 2h524, 2h525, 2h526, 2h527, 2h528, 2h529, 2h530, 2h531, 2h532, 2h533, 2h534, 2h535, 2h536, 2h537, 2h538, 2h539, 2h540, 2h541, 2h542, 2h543, 2h544, 2h545, 2h546, 2h547, 2h548, 2h549, 2h550, 2h551, 2h552, 2h553, 2h554, 2h555, 2h556, 2h557, 2h558, 2h559, 2h560, 2h561, 2h562, 2h563, 2h564, 2h565, 2h566, 2h567, 2h568, 2h569, 2h570, 2h571, 2h572, 2h573, 2h574, 2h575, 2h576, 2h577, 2h578, 2h579, 2h580, 2h581, 2h582, 2h583, 2h584, 2h585, 2h586, 2h587, 2h588, 2h589, 2h590, 2h591, 2h592, 2h593, 2h594, 2h595, 2h596, 2h597, 2h598, 2h599, 2h600, 2h601, 2h602, 2h603, 2h604, 2h605, 2h606, 2h607, 2h608, 2h609, 2h610, 2h611, 2h612, 2h613, 2h614, 2h615, 2h616, 2h617, 2h618, 2h619, 2h620, 2h621, 2h622, 2h623, 2h624, 2h625, 2h626, 2h627, 2h628, 2h629, 2h630, 2h631, 2h632, 2h633, 2h634, 2h635, 2h636, 2h637, 2h638, 2h639, 2h640, 2h641, 2h642, 2h643, 2h644, 2h645, 2h646, 2h647, 2h648, 2h649, 2h650, 2h651, 2h652, 2h653, 2h654, 2h655, 2h656, 2h657, 2h658, 2h659, 2h660, 2h661, 2h662, 2h663, 2h664, 2h665, 2h666, 2h667, 2h668, 2h669, 2h670, 2h671, 2h672, 2h673, 2h674, 2h675, 2h676, 2h677, 2h678, 2h679, 2h680, 2h681, 2h682, 2h683, 2h684, 2h685, 2h686, 2h687, 2h688, 2h689, 2h690, 2h691, 2h692, 2h693, 2h694, 2h695, 2h696, 2h697, 2h698, 2h699, 2h700, 2h701, 2h702, 2h703, 2h704, 2h705, 2h706, 2h707, 2h708, 2h709, 2h710, 2h711, 2h712, 2h713, 2h714, 2h715, 2h716, 2h717, 2h718, 2h719, 2h720, 2h721, 2h722, 2h723, 2h724, 2h725, 2h726, 2h727, 2h728, 2h729, 2h730, 2h731, 2h732, 2h733, 2h734, 2h735, 2h736, 2h737, 2h738, 2h739, 2h740, 2h741, 2h742, 2h743, 2h744, 2h745, 2h746, 2h747, 2h748, 2h749, 2h750, 2h751, 2h752, 2h753, 2h754, 2h755, 2h756, 2h757, 2h758, 2h759, 2h760, 2h761, 2h762, 2h763, 2h764, 2h765, 2h766, 2h767, 2h768, 2h769, 2h770, 2h771, 2h772, 2h773, 2h774, 2h775, 2h776, 2h777, 2h778, 2h779, 2h780, 2h781, 2h782, 2h783, 2h784, 2h785, 2h786, 2h787, 2h788, 2h789, 2h790, 2h791, 2h792, 2h793, 2h794, 2h795, 2h796, 2h797, 2h798, 2h799, 2h800, 2h801, 2h802, 2h803, 2h804, 2h805, 2h806, 2h807, 2h808, 2h809, 2h810, 2h811, 2h812, 2h813, 2h814, 2h815, 2h816, 2h817, 2h818, 2h819, 2h820, 2h821, 2h822, 2h823, 2h824, 2h825, 2h826, 2h827, 2h828, 2h829, 2h830, 2h831, 2h832, 2h833, 2h834, 2h835, 2h836, 2h837, 2h838, 2h839, 2h840, 2h841, 2h842, 2h843, 2h844, 2h845, 2h846, 2h847, 2h848, 2h849, 2h850, 2h851, 2h852, 2h853, 2h854, 2h855, 2h856, 2h857, 2h858, 2h859, 2h860, 2h861, 2h862, 2h863, 2h864, 2h865, 2h866, 2h867, 2h868, 2h869, 2h870, 2h871, 2h872, 2h873, 2h874, 2h875, 2h876, 2h877, 2h878, 2h879, 2h880, 2h881, 2h882, 2h883, 2h884, 2h885, 2h886, 2h887, 2h888, 2h889, 2h890, 2h891, 2h892, 2h893, 2h894, 2h895, 2h896, 2h897, 2h898, 2h899, 2h900, 2h901, 2h902, 2h903, 2h904, 2h905, 2h906, 2h907, 2h908, 2h909, 2h910, 2h911, 2h912, 2h913, 2h914, 2h915, 2h916, 2h917, 2h918, 2h919, 2h920, 2h921, 2h922, 2h923, 2h924, 2h925, 2h926, 2h927, 2h928, 2h929, 2h930, 2h931, 2h932, 2h933, 2h934, 2h935, 2h936, 2h937, 2h938, 2h939, 2h940, 2h941, 2h942, 2h943, 2h944, 2h945, 2h946, 2h947, 2h948, 2h949, 2h950, 2h951, 2h952, 2h953, 2h954, 2h955, 2h956, 2h957, 2h958, 2h959, 2h960, 2h961, 2h962, 2h963, 2h964, 2h965, 2h966, 2h967, 2h968, 2h969, 2h970, 2h971, 2h972, 2h973, 2h974, 2h975, 2h976, 2h977, 2h978, 2h979, 2h980, 2h981, 2h982, 2h983, 2h984, 2h985, 2h986, 2h987, 2h988, 2h989, 2h990, 2h991, 2h992, 2h993, 2h994, 2h995, 2h996, 2h997, 2h998, 2h999, 2h1000, 2h1001, 2h1002, 2h1003, 2h1004, 2h1005, 2h1006, 2h1007, 2h1008, 2h1009, 2h1010, 2h1011, 2h1012, 2h1013, 2h1014, 2h1015, 2h1016, 2h1017, 2h1018, 2h1019, 2h1020, 2h1021, 2h1022, 2h1023, 2h1024, 2h1025, 2h1026, 2h1027, 2h1028, 2h1029, 2h1030, 2h1031, 2h1032, 2h1033, 2h1034, 2h1035, 2h1036, 2h1037, 2h1038, 2h1039, 2h1040, 2h1041, 2h1042, 2h1043, 2h1044, 2h1045, 2h1046, 2h1047, 2h1048, 2h1049, 2h1050, 2h1051, 2h1052, 2h1053, 2h1054, 2h1055, 2h1056, 2h1057, 2h1058, 2h1059, 2h1060, 2h1061, 2h1062, 2h1063, 2h1064, 2h1065, 2h1066, 2h1067, 2h1068, 2h1069, 2h1070, 2h1071, 2h1072, 2h1073, 2h1074, 2h1075, 2h1076, 2h1077, 2h1078, 2h1079, 2h1080, 2h1081, 2h1082, 2h1083, 2h1084, 2h1085, 2h1086, 2h1087, 2h1088, 2h1089, 2h1090, 2h1091, 2h1092, 2h1093, 2h1094, 2h1095, 2h1096, 2h1097, 2h1098, 2h1099, 2h1100, 2h1101, 2h1102, 2h1103, 2h1104, 2h1105, 2h1106, 2h1107, 2h1108, 2h1109, 2h1110, 2h1111, 2h1112, 2h1113, 2h1114, 2h1115, 2h1116, 2h1117, 2h1118, 2h1119, 2h1120, 2h1121, 2h1122, 2h1123, 2h1124, 2h1125, 2h1126, 2h1127, 2h1128, 2h1129, 2h1130, 2h1131, 2h1132, 2h1133, 2h1134, 2h1135, 2h1136, 2h1137, 2h1138, 2h1139, 2h1140, 2h1141, 2h1142, 2h1143, 2h1144, 2h1145, 2h1146, 2h1147, 2h1148, 2h1149, 2h1150, 2h1151, 2h1152, 2h1153, 2h1154, 2h1155, 2h1156, 2h1157, 2h1158, 2h1159, 2h1160, 2h1161, 2h1162, 2h1163, 2h1164, 2h1165, 2h1166, 2h1167, 2h1168, 2h1169, 2h1170, 2h1171, 2h1172, 2h1173, 2h1174, 2h1175, 2h1176, 2h1177, 2h1178, 2h1179, 2h1180, 2h1181, 2h1182, 2h1183, 2h1184, 2h1185, 2h1186, 2h1187, 2h1188, 2h1189, 2h1190, 2h1191, 2h1192, 2h1193, 2h1194, 2h1195, 2h1196, 2h1197, 2h1198, 2h1199, 2h1200, 2h1201, 2h1202, 2h1203, 2h1204, 2h1205, 2h1206, 2h1207, 2h1208, 2h1209, 2h1210, 2h1211, 2h1212, 2h1213, 2h1214, 2h1215, 2h1216, 2h1217, 2h1218, 2h1219, 2h1220, 2h1221, 2h1222, 2h1223, 2h1224, 2h1225, 2h1226, 2h1227, 2h1228, 2h1229, 2h1230, 2h1231, 2h1232, 2h1233, 2h1234, 2h1235, 2h1236, 2h1237, 2h1238, 2h1239, 2h1240, 2h1241, 2h1242, 2h1243, 2h1244, 2h1245, 2h1246, 2h1247, 2h1248, 2h1249, 2h1250, 2h1251, 2h1252, 2h1253, 2h1254, 2h1255, 2h1256, 2h1257, 2h1258, 2h1259, 2h1260, 2h1261, 2h1262, 2h1263, 2h1264, 2h1265, 2h1266, 2h1267, 2h1268, 2h1269, 2h1270, 2h1271, 2h1272, 2h1273, 2h1274, 2h1275, 2h1276, 2h1277, 2h1278, 2h1279, 2h1280, 2h1281, 2h1282, 2h1283, 2h1284, 2h1285, 2h1286, 2h1287, 2h1288, 2h1289, 2h1290, 2h1291, 2h1292, 2h1293, 2h1294, 2h1295, 2h1296, 2h1297, 2h1298, 2h1299, 2h1300, 2h1301, 2h1302, 2h1303, 2h1304, 2h1305, 2h1306, 2h1307, 2h1308, 2h1309, 2h1310, 2h1311, 2h1312, 2h1313, 2h1314, 2h1315, 2h1316, 2h1317, 2h1318, 2h1319, 2h1320, 2h1321, 2h1322, 2h1323, 2h1324, 2h1325, 2h1326, 2h1327, 2h1328, 2h1329, 2h1330, 2h1331, 2h1332, 2h1333, 2h1334, 2h1335, 2h1336, 2h1337, 2h1338, 2h1339, 2h1340, 2h1341, 2h1342, 2h1343, 2h1344, 2h1345, 2h1346, 2h1347, 2h1348, 2h1349, 2h1350, 2h1351, 2h1352, 2h1353, 2h1354, 2h1355, 2h1356, 2h1357, 2h1358, 2h1359, 2h1360, 2h1361, 2h1362, 2h1363, 2h1364, 2h1365, 2h1366, 2h1367, 2h1368, 2h1369, 2h1370, 2h1371, 2h1372, 2h1373, 2h1374, 2h1375, 2h1376, 2h1377, 2h1378, 2h1379, 2h1380, 2h1381, 2h1382, 2h1383, 2h1384, 2h1385, 2h1386, 2h1387, 2h1388, 2h1389, 2h1390, 2h1391, 2h1392, 2h1393, 2h1394, 2h1395, 2h1396, 2h1397, 2h1398, 2h1399, 2h1400, 2h1401, 2h1402, 2h1403, 2h1404, 2h1405, 2h1406, 2h1407, 2h1408, 2h1409, 2h1410, 2h1411, 2h1412, 2h1413, 2h1414, 2h1415, 2h1416, 2h1417, 2h1418, 2h1419, 2h1420, 2h1421, 2h1422, 2h1423, 2h1424, 2h1425, 2h1426, 2h1427, 2h1428, 2h1429, 2h1430, 2h1431, 2h1432, 2h1433, 2h1434, 2h1435, 2h1436, 2h1437, 2h1438, 2h1439, 2h1440, 2h1441, 2h1442, 2h1443, 2h1444, 2h1445, 2h1446, 2h1447, 2h1448, 2h1449, 2h1450, 2h1451, 2h1452, 2h1453, 2h1454, 2h1455, 2h1456, 2h1457, 2h1458, 2h1459, 2h1460, 2h1461, 2h1462, 2h1463, 2h1464, 2h1465, 2h1466, 2h1467, 2h1468, 2h1469, 2h1470, 2h1471, 2h1472, 2h1473, 2h1474, 2h1475, 2h1476, 2h1477, 2h1478, 2h1479, 2h1480, 2h1481, 2h1482, 2h1483, 2h1484, 2h1485, 2h1486, 2h1487, 2h1488, 2h1489, 2h1490, 2h1491, 2h1492, 2h1493, 2h1494, 2h1495, 2h1496, 2h1497, 2h1498, 2h1499, 2h1500, 2h1501, 2h1502, 2h1503, 2h1504, 2h1505, 2h1506, 2h1507, 2h1508, 2h1509, 2h1510, 2h1511, 2h1512, 2h1513, 2h1514, 2h1515, 2h1516, 2h1517, 2h1518, 2h1519, 2h1520, 2h1521, 2h1522, 2h1523, 2h1524, 2h1525, 2h1526, 2h1527, 2h1528, 2h1529, 2h1530, 2h1531, 2h1532, 2h1533, 2h1534, 2h1535, 2h1

