

JOINT REPAIR QUANTITY TABLE		
FOAM JOINT SEALS FOR PRESERVATION	ESTIMATED LIN. FT.	ACTUAL LIN. FT.
BENT 1	75.0	
BENT 2	75.0	
TOTAL	150.0	

POURABLE SILICONE JOINT SEALANT		
FOAM JOINT SEALS FOR PRESERVATION	ESTIMATED LIN. FT.	ACTUAL LIN. FT.
END BENT 1	65.0	
END BENT 2	104.0	
TOTAL	169.0	

NOTES:

THE CONTRACTOR SHALL FIELD VERIFY THE EXISTING JOINT OPENING PRIOR TO ORDERING JOINT SEAL MATERIAL. IF ACTUAL JOINT OPENING VARIES FROM THE OPENING INDICATED IN DETAIL BY MORE THAN 1/4", NOTIFY ENGINEER, REVISION TO THE JOINT SEAL SIZE MIGHT BE NECESSARY.

FINAL JOINT SEALS SHALL NOT BE INSTALLED UNTIL THE OVERLAY IS COMPLETE.

THE CONTRACTOR SHALL TAKE CARE DURING JOINT REHAB OPERATIONS NOT TO DROP ANY MATERIAL BELOW THE BRIDGE WITHOUT PROTECTIVE DEVICES BELOW TO CATCH THE MATERIAL. ANY MATERIAL THAT FALLS BELOW THE BRIDGE SHALL BE CONTAINED, REMOVE AND DISPOSED OF BY THE CONTRACTOR AT NO EXTRA COST TO THE DEPARTMENT. IF THE ENGINEER DETERMINES THAT THE PROTECTIVE DEVICES ARE NOT ADEQUATE OF NOT BEING EMPLOYED, THE WORK SHALL BE SUSPENDED UNTIL ADEQUATE PROTECTION IS PROVIDED.

THE CONTRACTOR WILL NOT BE PERMITTED TO FORM THE JOINTS IN LIEU OF SAWING THE JOINT.

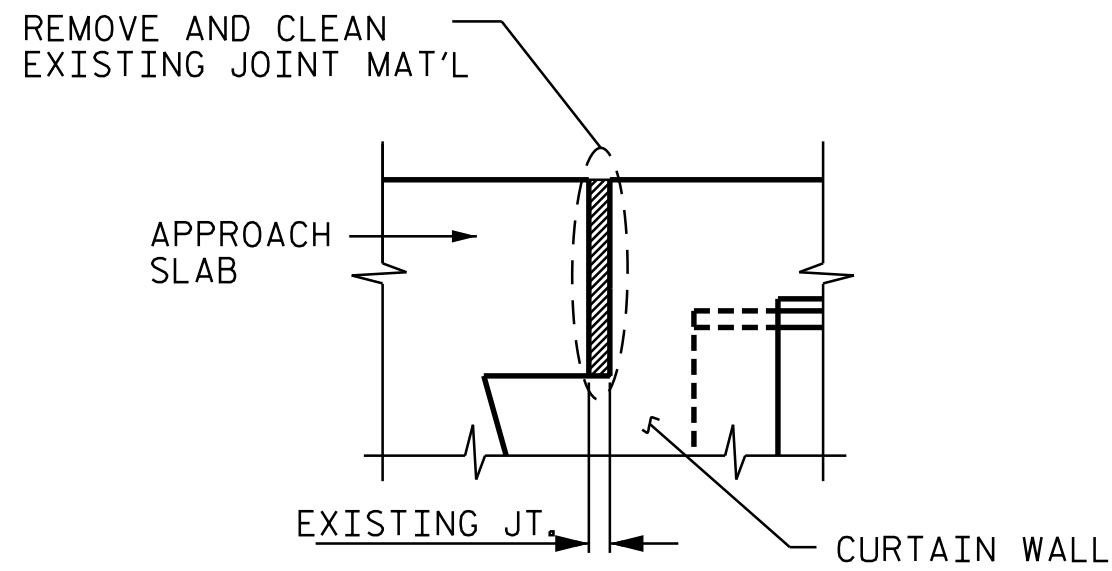
DURING THE JOINT INSTALLATION PROCEDURE, THE JOINT AND SURROUNDING AREA SHALL BE KEPT CLEAN AND FREE OF DEBRIS.

THE MANUFACTURER IS TO DETERMINE AND PROVIDE THE NOMINAL UNCOMPRESSED SEAL WIDTH OF THE FOAM JOINT SEAL FOR THE SIZE OF THE OPENING ON THE PLANS AND TO ACCOMMODATE THE MINIMUM EXPANSION SHOWN ON THE PLANS.

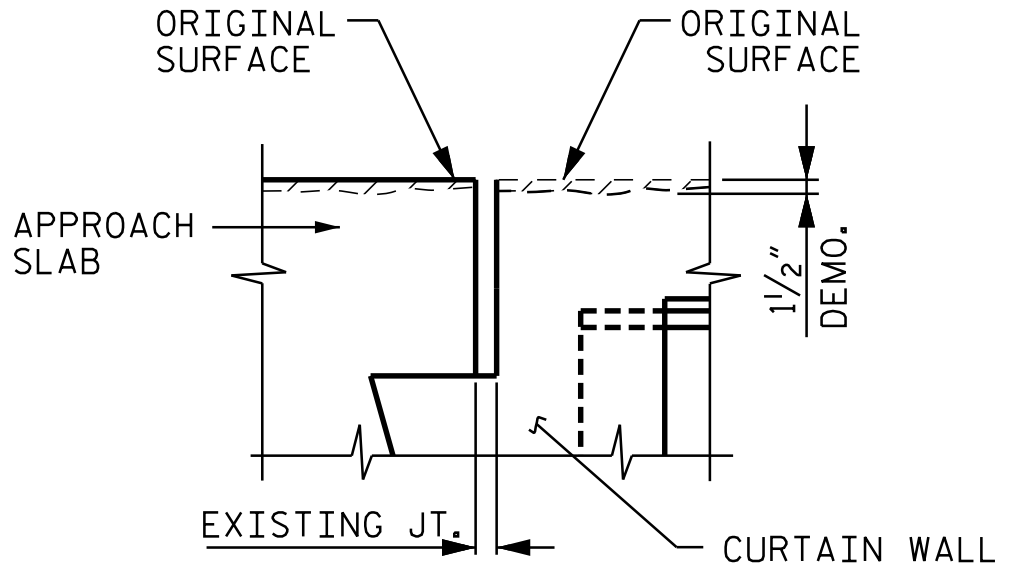
FINAL SURFACE OF THE JOINT DEMOLITION AREA PRIOR TO PLACEMENT OF CONCRETE REPAIR MATERIAL SHOULD BE REASONABLY FLAT AND LEVEL. ENGINEER SHALL DETERMINE THE ACCEPTABILITY OF THE SURFACE PRIOR TO PLACEMENT OF REPAIR CONCRETE.

THE INSTALLATION OF THE JOINT SEAL SHALL BE WATERTIGHT.

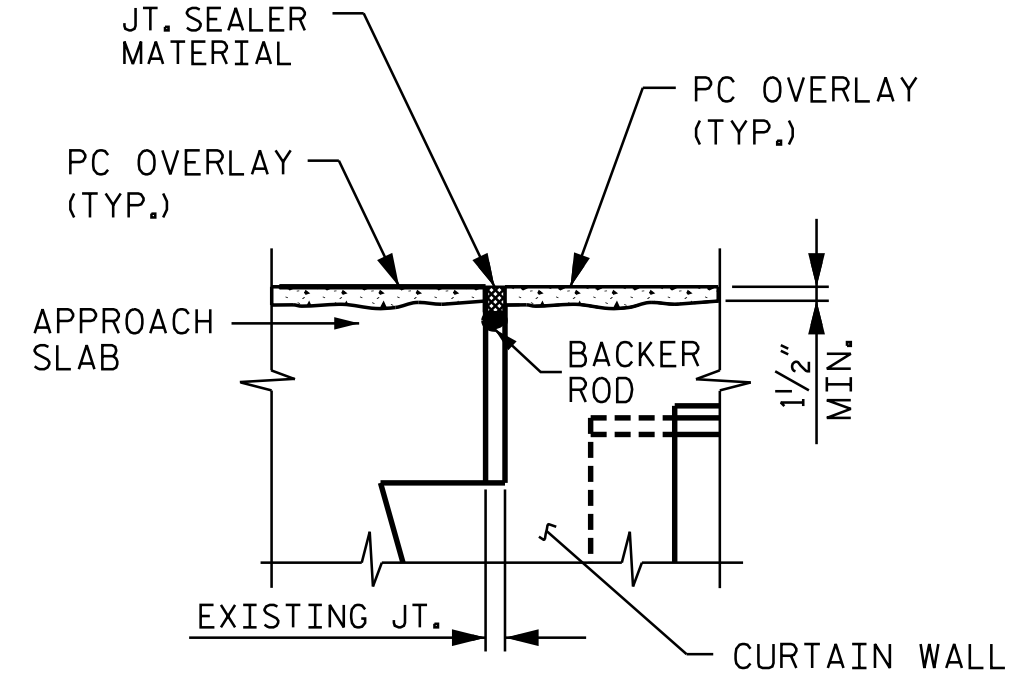
A MANUFACTURER'S CERTIFIED TRAINED REPRESENTATIVE SHALL BE PRESENT DURING THE INSTALLATION OF THE FIRST JOINT OF THE PROJECT, OR UNTIL THE ENGINEER IS SATISFIED WITH THE INSTALLATION PROCESS.



EXISTING JOINT

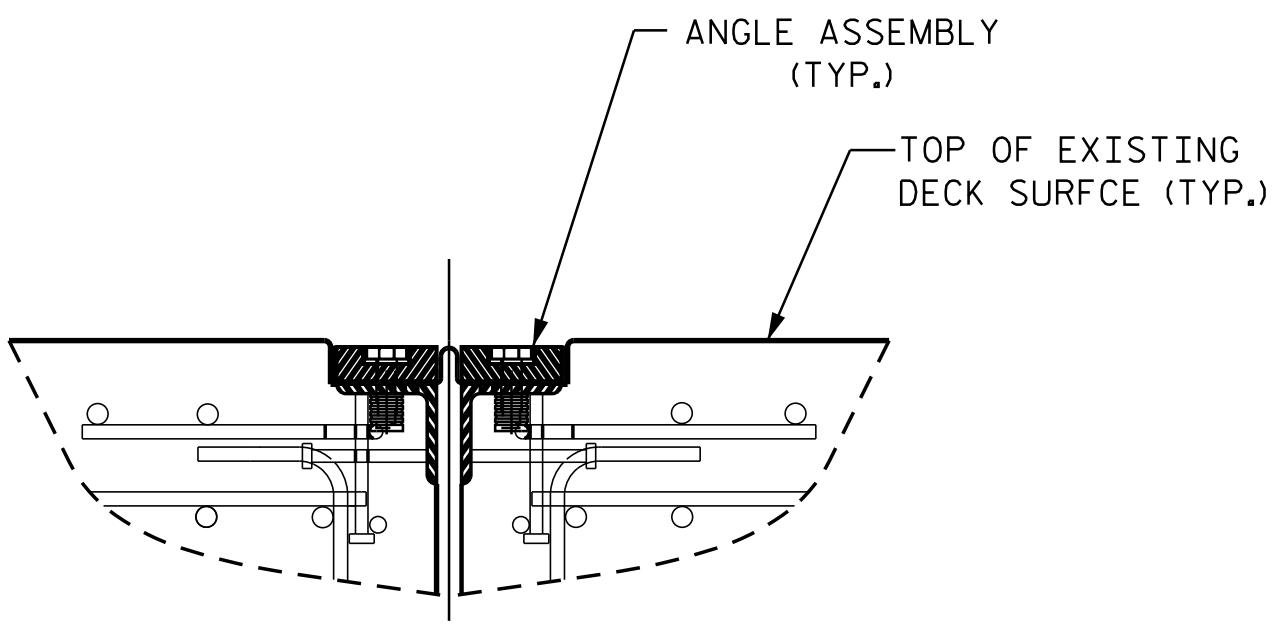


MINIMUM EXISTING JOINT DEMOLITION

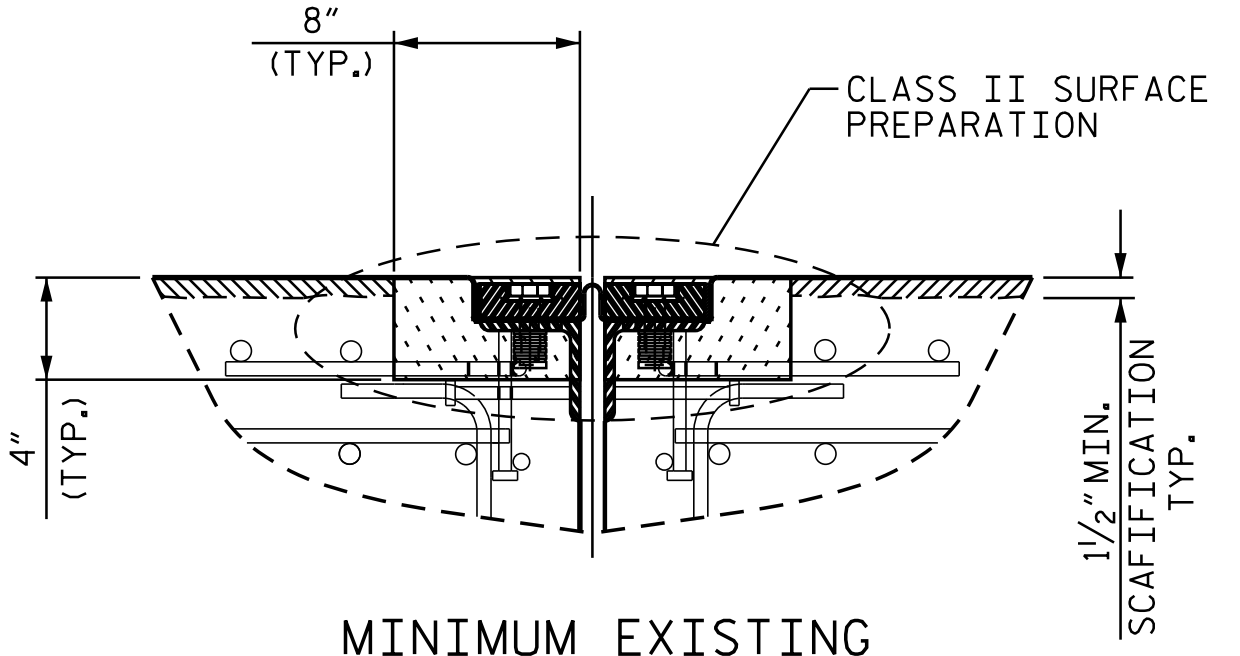


PROPOSED JOINT

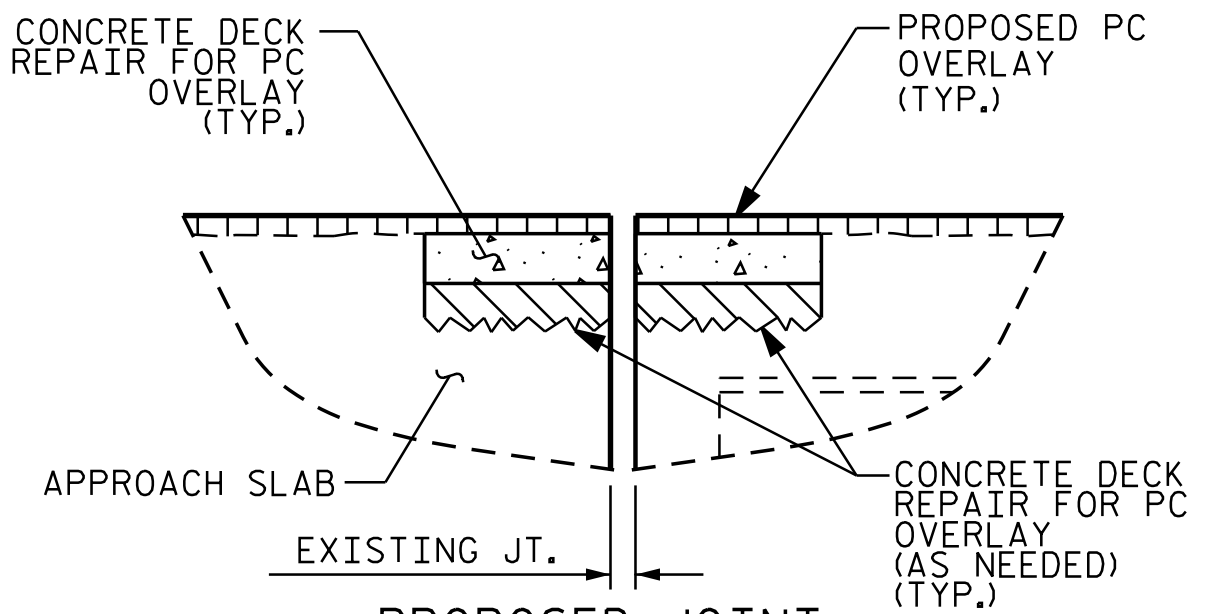
JOINT INSTALLATION SEQUENCE AT END BENTS
SECTION A-A



EXISTING JOINT

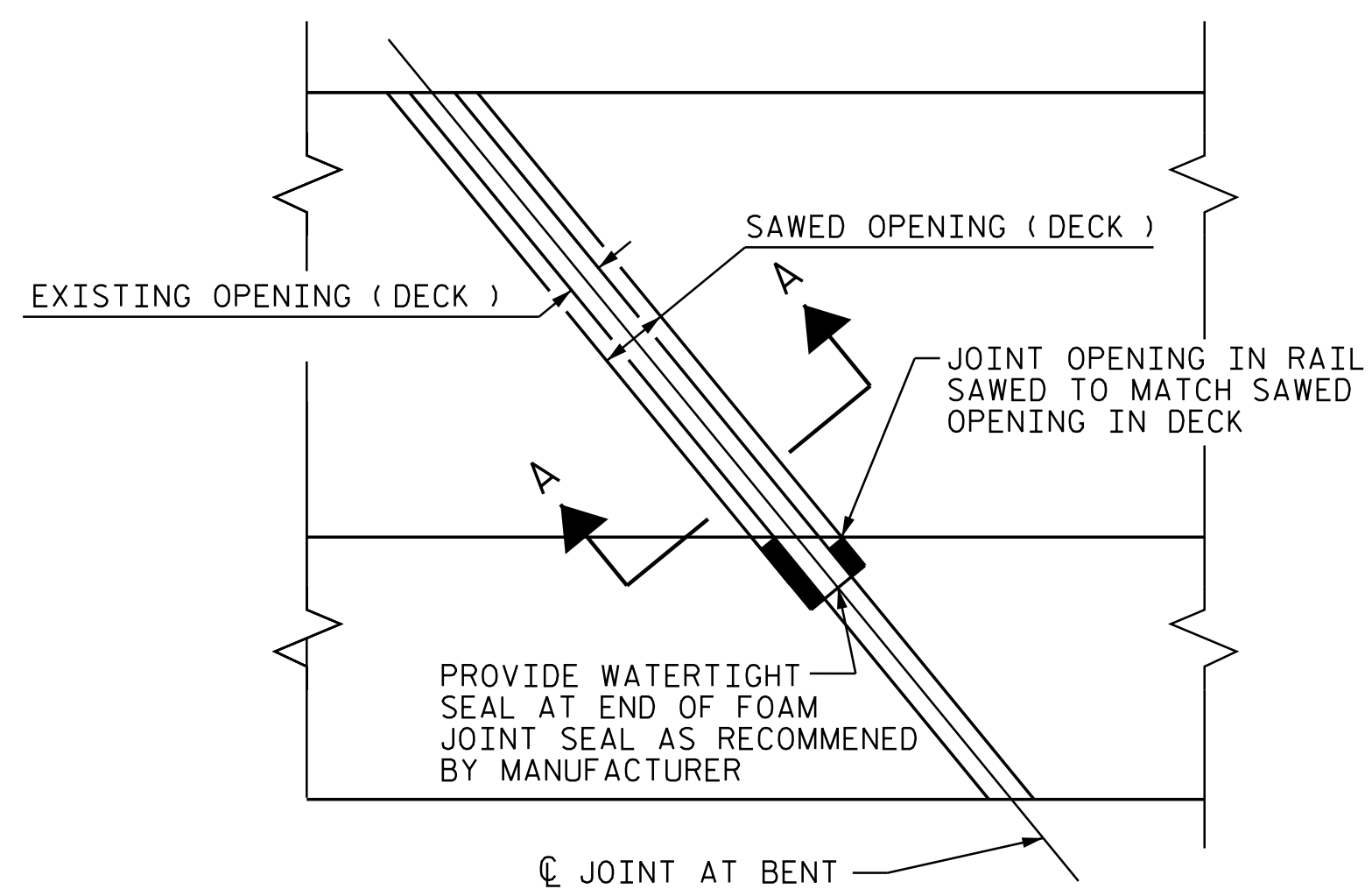


MINIMUM EXISTING JOINT DEMOLITION

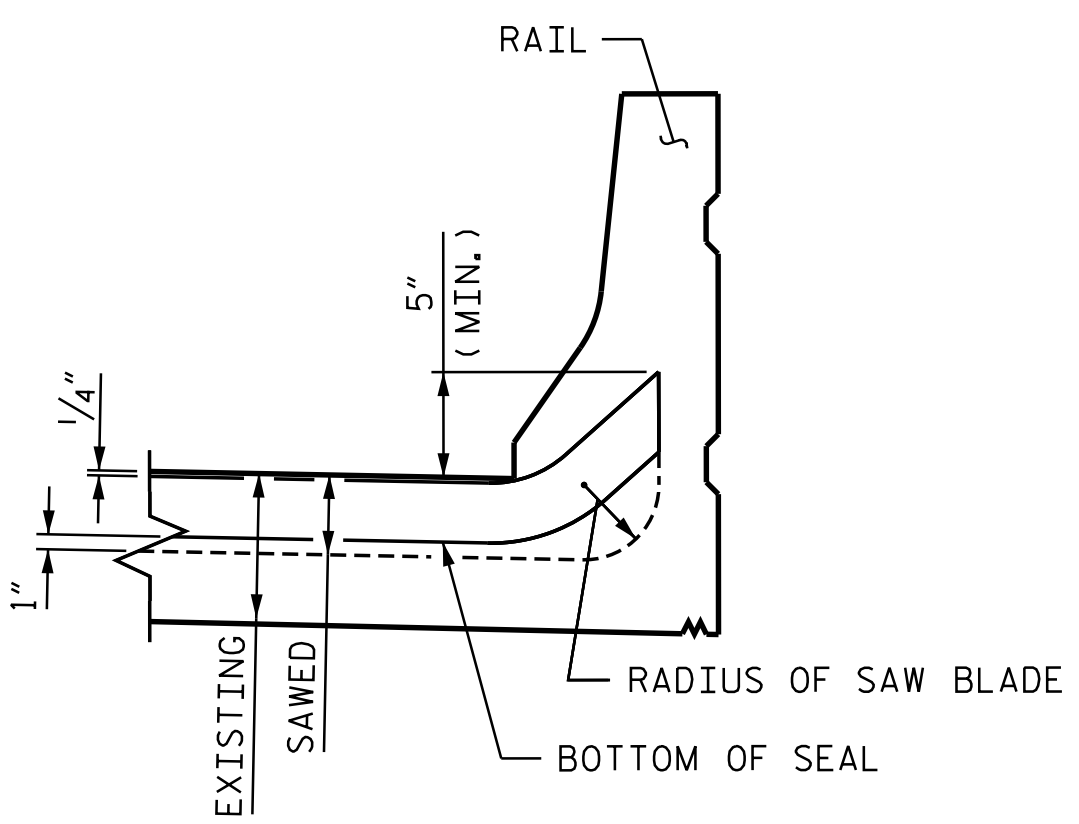


PROPOSED JOINT PRIOR TO SAWING

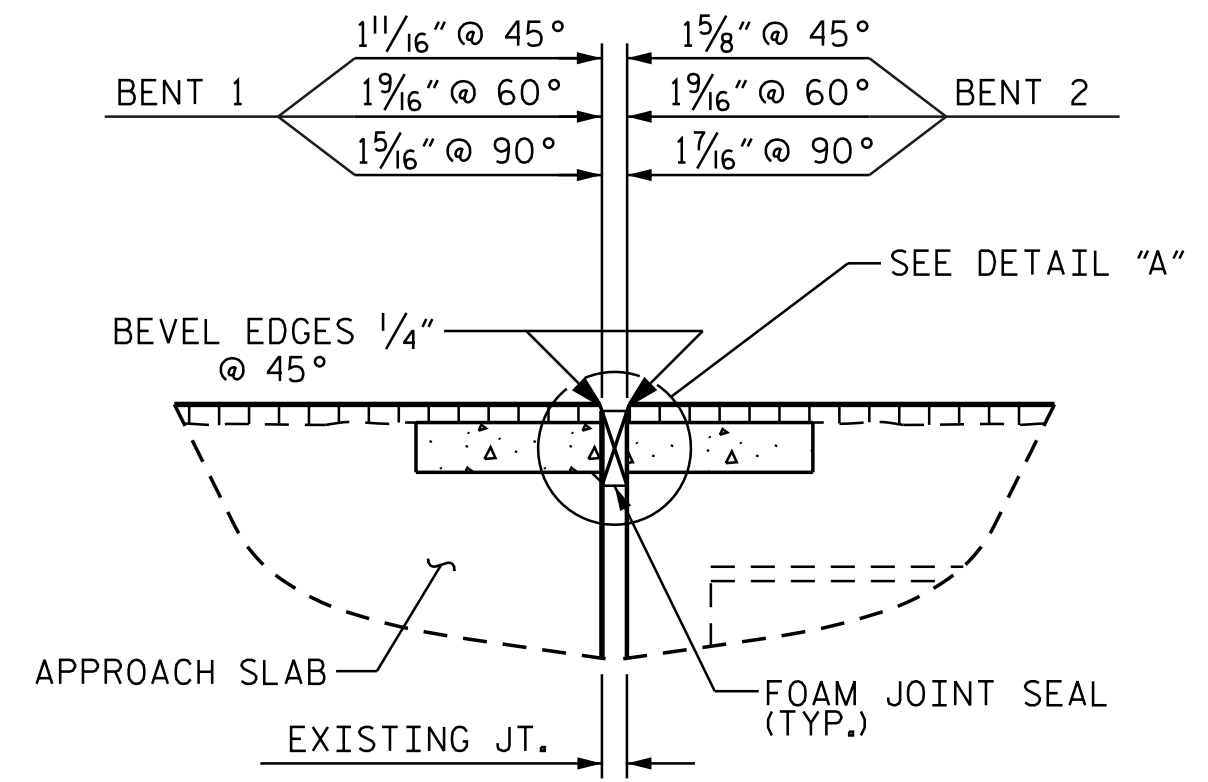
JOINT INSTALLATION SEQUENCE AT BENTS
SECTION B-B



PLAN



EXPANSION JOINT FOAM AT BARRIER



PROPOSED FOAM JOINT SEAL

PROJECT NO. I-5941
DURHAM COUNTY
 BRIDGE NO. 310355

DOCUMENT NOT CONSIDERED FINAL UNLESS ALL SIGNATURES COMPLETED

Designed by: *Farzin Asefnia*

19141ABAP

NORTH CAROLINA PROFESSIONAL SEAL 20103 ENGINEER FARZIN ASEFNIA

11/13/2023

STATE OF NORTH CAROLINA
 DEPARTMENT OF TRANSPORTATION
 RALEIGH

SUPERSTRUCTURE JOINT DETAILS

DRAWN BY :	M. HOGAN	DATE :	3/2023
CHECKED BY :	JIA XU	DATE :	7/2023
DESIGN ENGINEER OF RECORD:	F. ASEFNIA	DATE :	11/2023

REVISIONS				SHEET NO.	
NO.	BY:	DATE:	NO.	BY:	DATE:
1			3		
2			4		

TOTAL SHEETS: 14