

JOINT REPAIR QUANTITY TABLE		
FOAM JOINT SEALS FOR PRESERVATION	ESTIMATED LIN. FT.	ACTUAL LIN. FT.
END BENT 2	73	

ELASTOMERIC CONCRETE (CU. FT.)	
END BENT 2	32.0
TOTAL	32.0

NOTES:
 FINAL JOINT SEALS SHALL NOT BE INSTALLED UNTIL THE SEALANT WORK IS COMPLETE.
 THE CONTRACTOR SHALL FIELD VERIFY THE EXISTING JOINT OPENING PRIOR TO ORDERING JOINT SEAL MATERIAL. IF ACTUAL JOINT OPENING VARIES FROM THE OPENING INDICATED IN DETAIL BY MORE THAN 1/4", NOTIFY ENGINEER.

FINAL SURFACE OF THE JOINT DEMOLITION AREA PRIOR TO PLACEMENT OF CONCRETE REPAIR MATERIAL SHOULD BE REASONABLY FLAT AND LEVEL. ENGINEER SHALL DETERMINE THE ACCEPTABILITY OF THE SURFACE PRIOR TO PLACEMENT OF ELASTOMERIC CONCRETE OR REPAIR CONCRETE.

THE INSTALLATION OF THE JOINT SEAL SHALL BE WATERTIGHT.

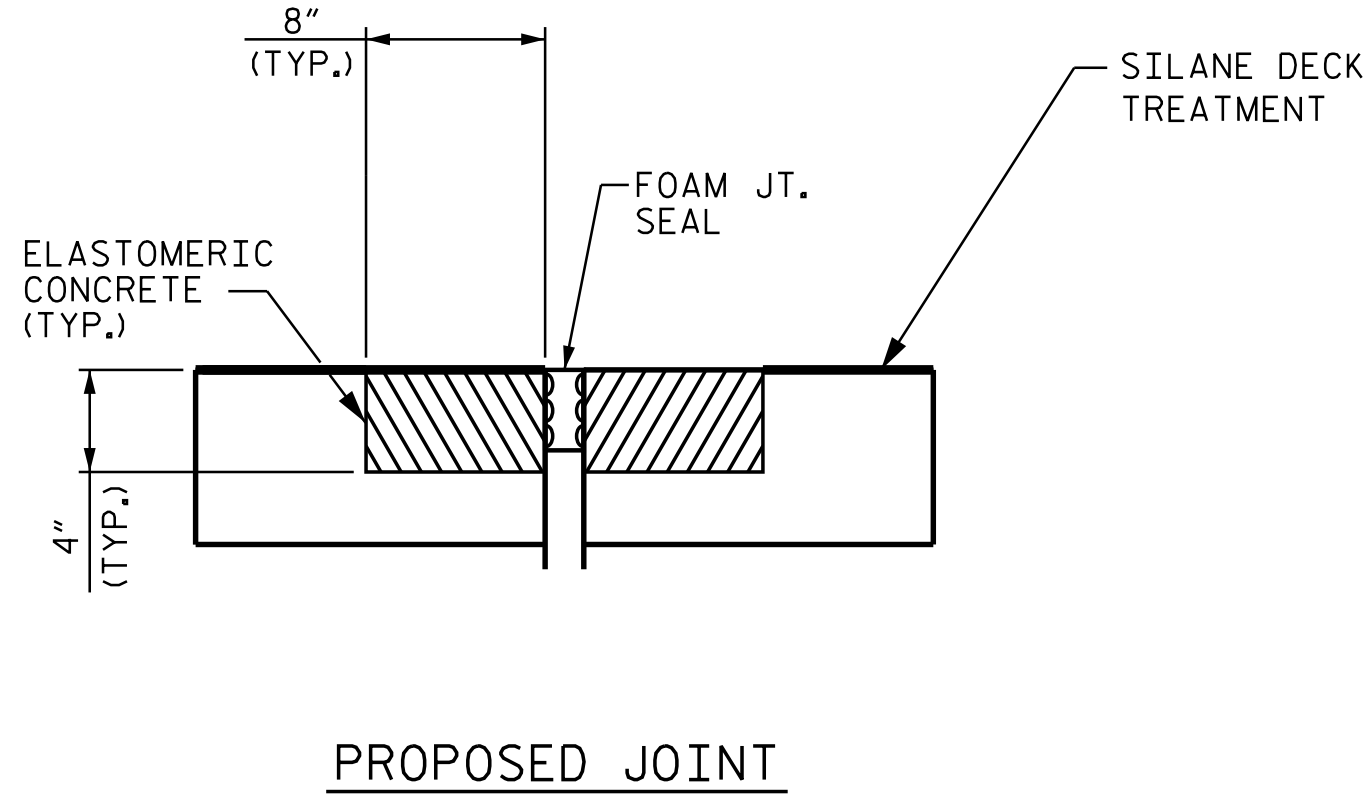
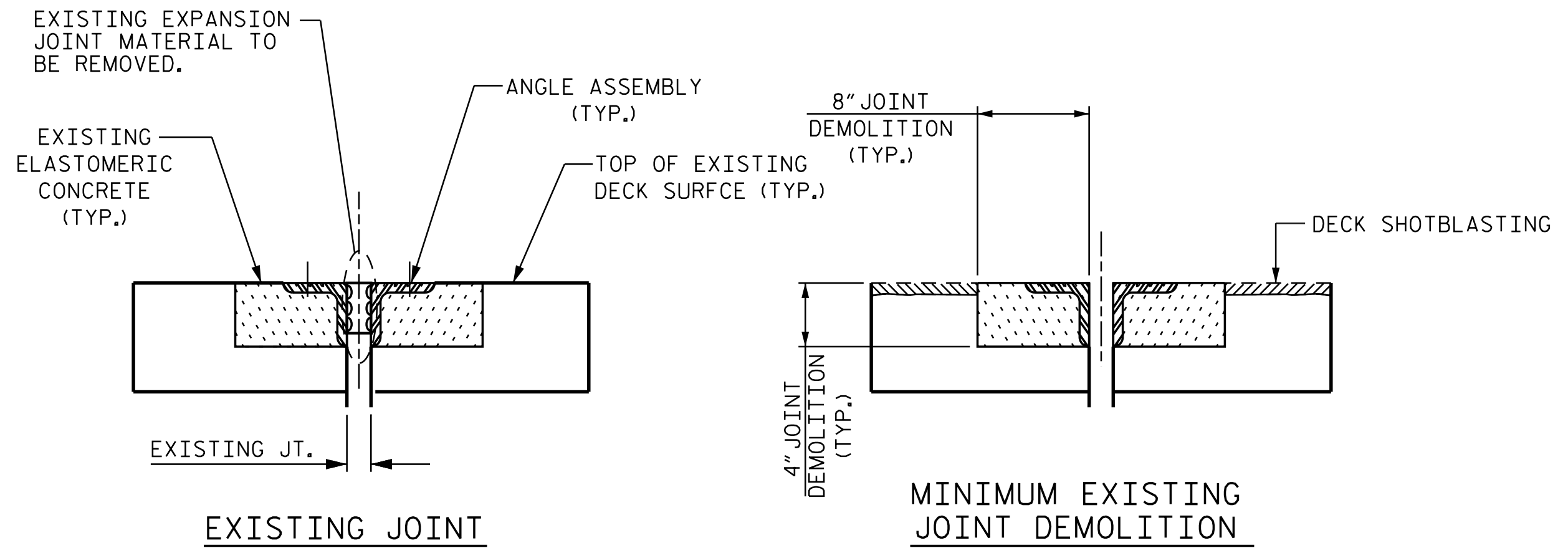
FOAM JOINTS SHALL BE INSTALLED AS PER THE MANUFACTURER'S RECOMMENDATIONS.

A MANUFACTURER'S CERTIFIED TRAINED REPRESENTATIVE SHALL BE PRESENT DURING THE INSTALLATION OF THE FIRST JOINT OF THE PROJECT, OR UNTIL THE ENGINEER IS SATISFIED WITH THE INSTALLATION PROCESS.

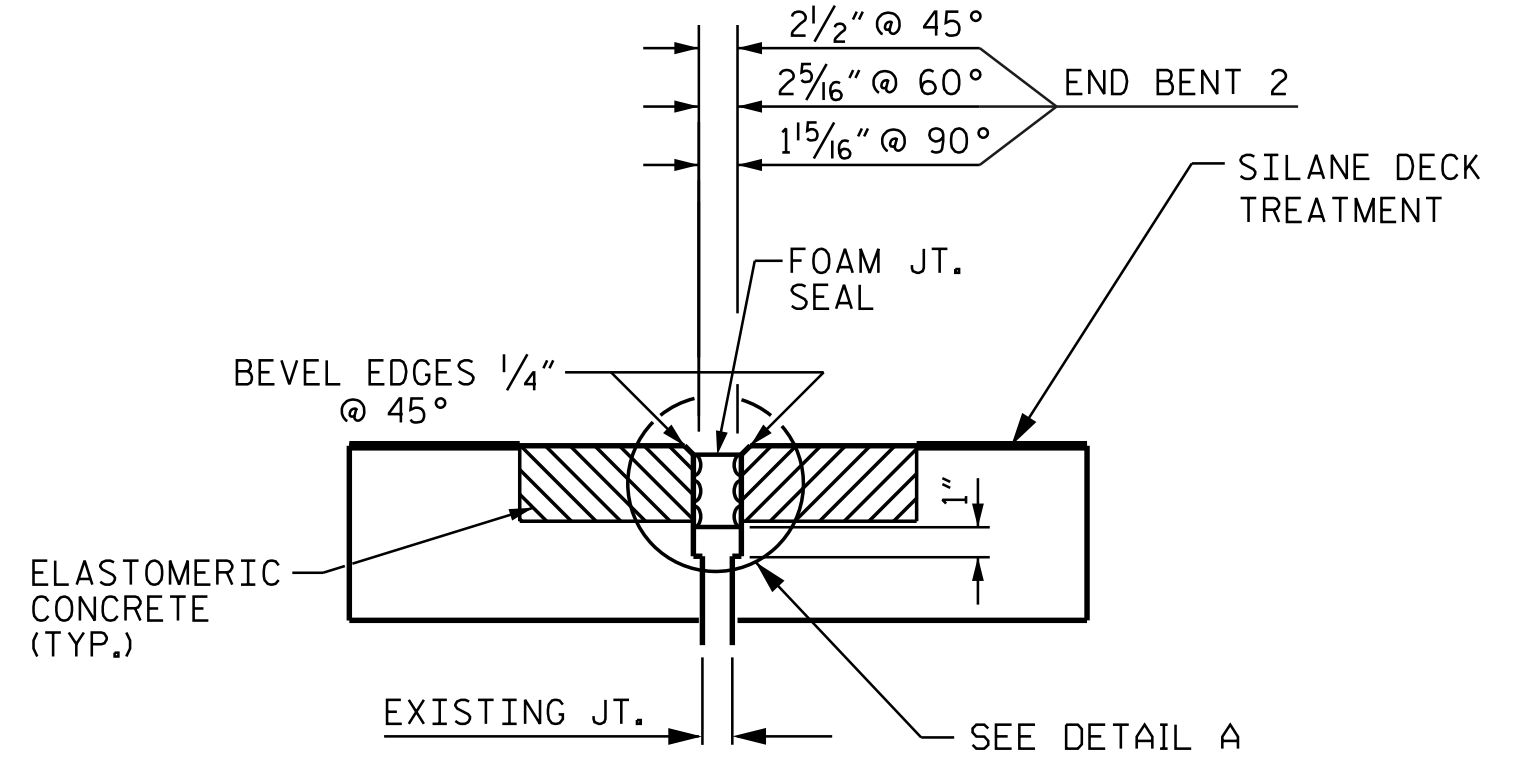
THE CONTRACTOR SHALL TAKE CARE DURING JOINT REHAB OPERATIONS NOT TO DROP ANY MATERIAL BELOW THE BRIDGE WITHOUT PROTECTIVE DEVICES BELOW TO CATCH THE MATERIAL. ANY MATERIAL THAT FALLS BELOW THE BRIDGE SHALL BE CONTAINED, REMOVE AND DISPOSED OF BY THE CONTRACTOR AT NO EXTRA COST TO THE DEPARTMENT. IF THE ENGINEER DETERMINES THAT THE PROTECTIVE DEVICES ARE NOT ADEQUATE OF NOT BEING EMPLOYED, THE WORK SHALL BE SUSPENDED UNTIL ADEQUATE PROTECTION IS PROVIDED.

THE MANUFACTURER IS TO DETERMINE AND PROVIDE THE NOMINAL UNCOMPRESSED SEAL WIDTH OF THE FOAM JOINT SEAL FOR THE SIZE OF THE OPENING ON THE PLANS AND TO ACCOMMODATE THE MINIMUM EXPANSION SHOWN ON THE PLANS.

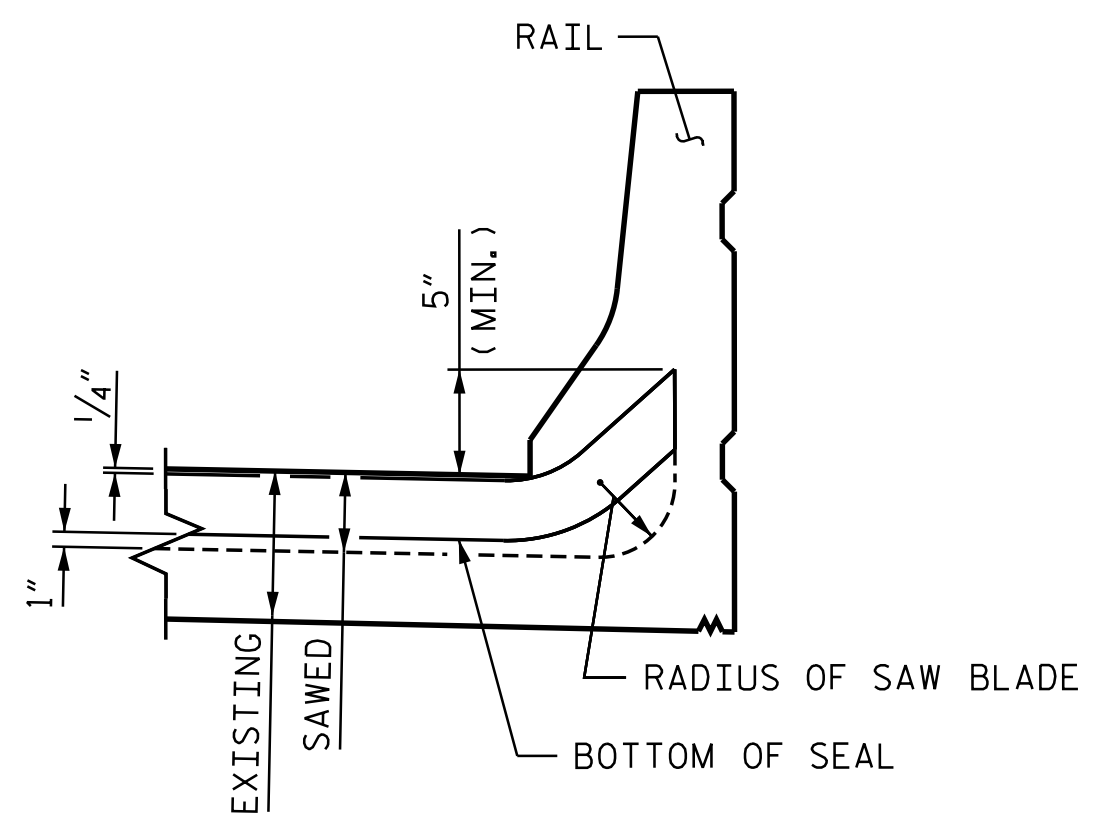
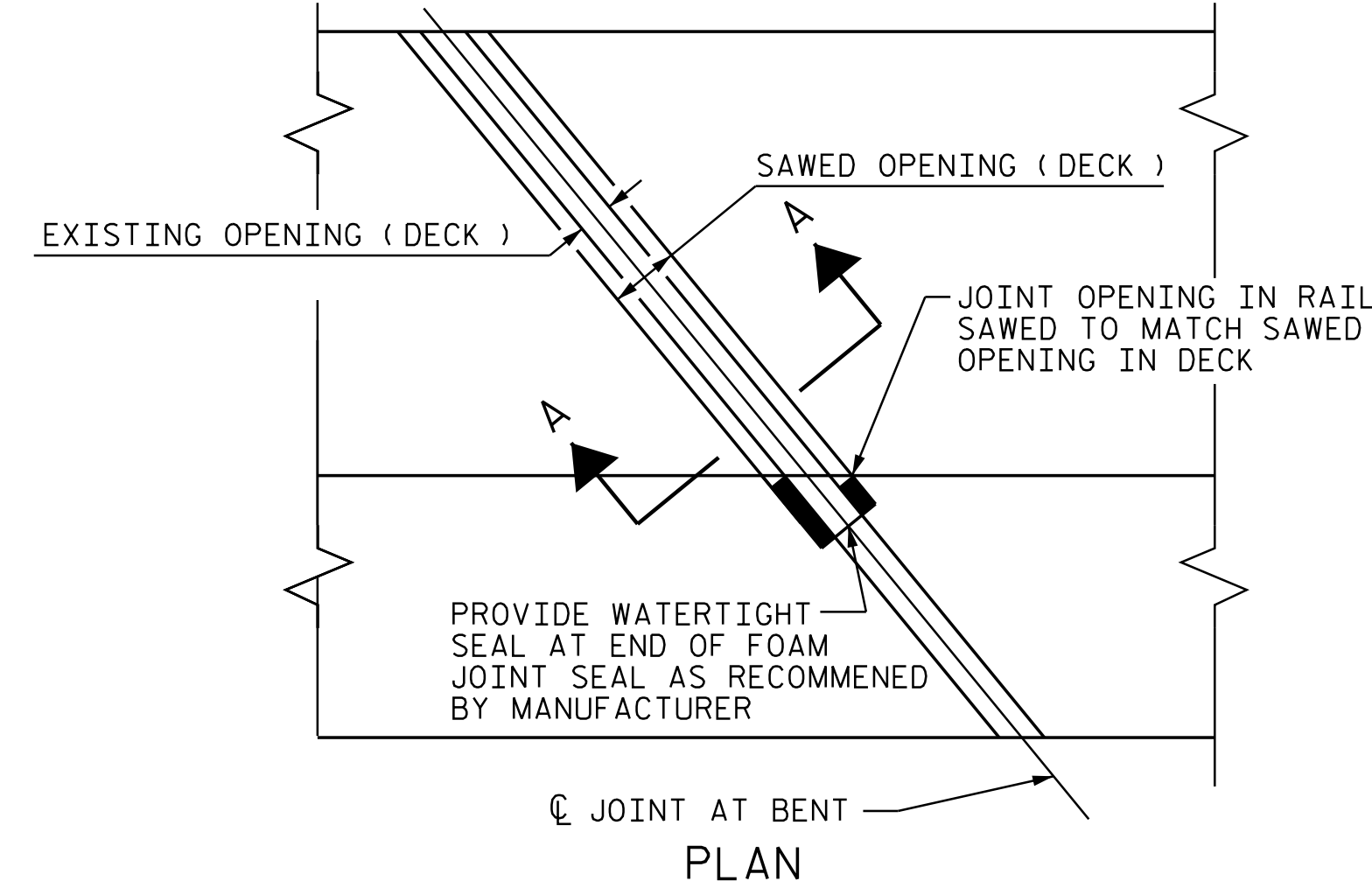
THE CONTRACTOR WILL NOT BE PERMITTED TO FORM THE JOINTS IN LIEU OF SAWING.



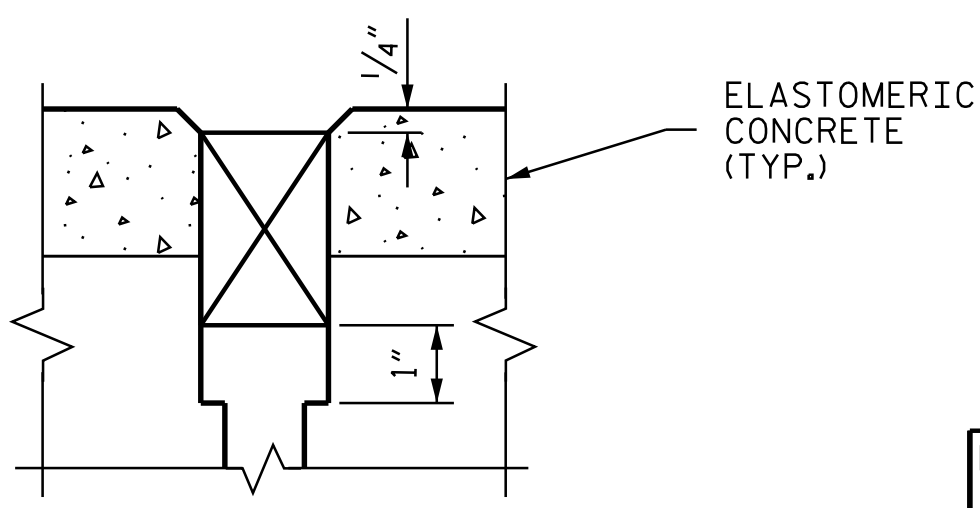
JOINT INSTALLATION SEQUENCE AT BENTS
SECTION A-A



PROPOSED FOAM JOINT SEAL EXPANSION



EXPANSION JOINT FOAM AT BARRIER



DETAIL "A"

PROJECT NO. I-5941
 DURHAM COUNTY
 BRIDGE NO. 310135

DOCUMENT NOT CONSIDERED FINAL UNLESS ALL SIGNATURES COMPLETED
 Drawn by: *Farzin Asefnia*
 NORTH CAROLINA PROFESSIONAL SEAL 20103 ENGINEER FARZIN ASEFNIA
 11/13/2023

STATE OF NORTH CAROLINA
 DEPARTMENT OF TRANSPORTATION
 RALEIGH
 SUPERSTRUCTURE
 JOINT DETAILS @ END BENT 2

REVISIONS						SHEET NO.
NO.	BY:	DATE:	NO.	BY:	DATE:	S3-10
1			3			TOTAL SHEETS
2			4			18

DRAWN BY : M. HOGAN DATE : 3/2023
 CHECKED BY : JIA XU DATE : 7/2023
 DESIGN ENGINEER OF RECORD: F. ASEFNIA DATE : 11/2023

E.L. ROBINSON
 3362 Old Fork Rd.
 Raleigh, N.C. 27609
 Tel: 984.980.2810
 efl@elrobinsonengineering.com
 License: C-22 9