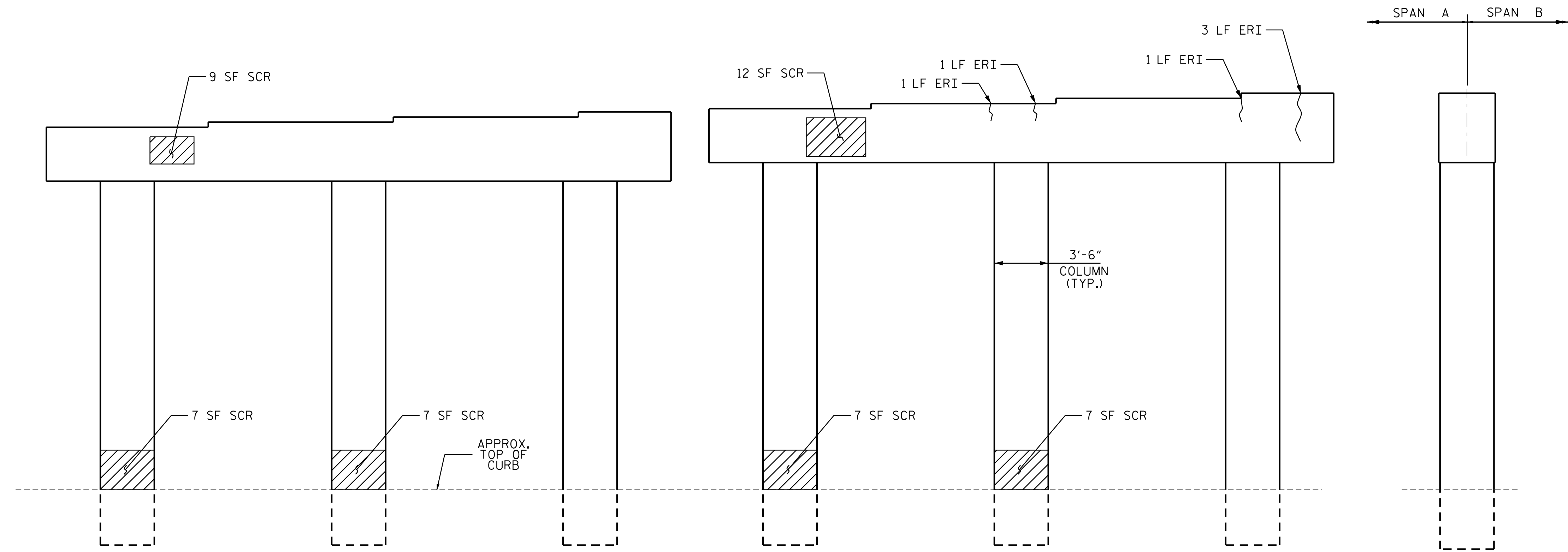


PLAN



ELEVATION

BENT NO. 1
SPAN A FACE

| AS-BUILT REPAIR QUANTITY TABLE | | | | |
|--------------------------------|------------|-----------|---------|-----------|
| BENT 1 SPAN A FACE | QUANTITIES | | | |
| | ESTIMATE | | ACTUAL | |
| SHOTCRETE REPAIRS | AREA SF | VOLUME CF | AREA SF | VOLUME CF |
| CAP | 21.0 | 5.3 | | |
| COLUMN | 28.0 | 7.0 | | |
| CONCRETE REPAIRS | AREA SF | VOLUME CF | AREA SF | VOLUME CF |
| CAP | 0.0 | 0.0 | | |
| EPOXY RESIN INJECTION | LN. FT. | | LN. FT. | |
| CAP | 57.0 | | | |
| COLUMN | 0.0 | | | |
| EPOXY COATING | SQ. FT. | | SQ. FT. | |
| TOP OF BENT CAP | 281.0 | | | |

NOTES:

REPAIR LOCATIONS AND ESTIMATE OF QUANTITIES ARE BASED ON THE BEST INFORMATION AVAILABLE. IF ADDITIONAL REPAIRS NOT SHOWN ON THE DRAWINGS ARE DEEMED NECESSARY BY THE ENGINEER, THE ENGINEER WILL NOTE ON THE DRAWINGS THE APPROXIMATE LOCATIONS AND DESCRIPTION OF THE REPAIRS AND ENTER THE ACTUAL QUANTITIES INTO THE AS-BUILT REPAIR QUANTITY TABLE.

CLEAN AND REMOVE DEBRIS FROM THE TOP OF THE CAP AND APPLY EPOXY PROTECTIVE COATING. EPOXY COATING SHALL BE APPLIED TO THE TOP SURFACE OF THE CAP. THE CONTRACTOR SHALL NOT COAT THE AREA OF THE CAP BENEATH THE MASONRY PLATES. FOR EPOXY COATING, SEE SPECIAL PROVISIONS.

SHOTCRETE REPAIRS MAY BE REPLACED WITH CONCRETE REPAIRS WITH THE APPROVAL OF THE ENGINEER.

FOR CAP AND COLUMN REPAIRS, SEE "TYPICAL CAP AND COLUMN REPAIR DETAILS", SHEET.

FOR SHOTCRETE REPAIR, SEE SPECIAL PROVISIONS.

FOR CONCRETE REPAIR, SEE SPECIAL PROVISIONS.

FOR EPOXY RESIN INJECTION, SEE SPECIAL PROVISIONS.

- SHOTCRETE REPAIR (SCR)
- CONCRETE REPAIR (CR)
- EPOXY RESIN INJECTION (ERI)

PROJECT NO. I-5941
DURHAM COUNTY
 BRIDGE NO. 310108

SHEET 2 OF 4

| | | | |
|---|--|--|--|
| DOCUMENT NOT CONSIDERED FINAL UNLESS ALL SIGNATURES COMPLETED Drawn/signed by: | | STATE OF NORTH CAROLINA DEPARTMENT OF TRANSPORTATION RALEIGH SUBSTRUCTURE REPAIR BENT 1 SPAN A FACE | |
| | | REVISIONS | |
| NO. 1 BY: M. HOGAN DATE: 3/2023 | | NO. 2 BY: JIA XU DATE: 7/2023 | |
| NO. 3 BY: F. ASEFNIA DATE: 11/2023 | | NO. 4 BY: F. ASEFNIA DATE: 11/2023 | |
| SHEET NO. S1-9 TOTAL SHEETS 11 | | | |

DRAWN BY : M. HOGAN DATE : 3/2023
 CHECKED BY : JIA XU DATE : 7/2023
 DESIGN ENGINEER OF RECORD: F. ASEFNIA DATE : 11/2023

E.L. ROBINSON
 3362 Old Park Rd.
 Raleigh, N.C. 27609
 Tel: 984.980.2810
 e:rl@elrobinsonengineering.com
 License: C-22 9