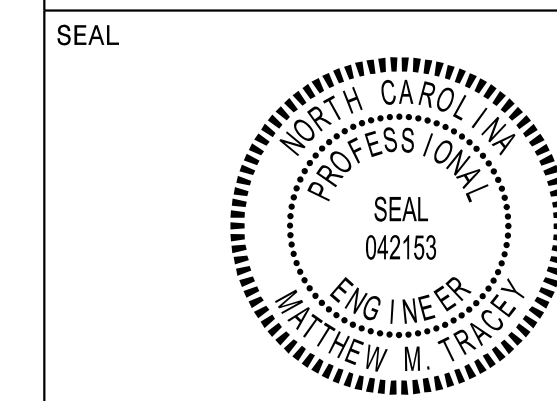


APPROVED: *Matthew Tracey*  
DocuSigned by:  
 Matthew Tracey  
 63302E1856974DB

DATE: 10/11/2023



DOCUMENT NOT CONSIDERED FINAL  
 UNLESS ALL SIGNATURES COMPLETED

SIGN NUMBER: 102 TYPE: A QUANTITY: 1  
 SIGN WIDTH: 18'-6" HEIGHT: 7'-0" TOTAL AREA: 129.5 Sq.Ft.  
 BORDER TYPE: FLUSH RECESS: 0" WIDTH: 2" RADIUS: 9"  
 NO. Z BARS: 2 LENGTH: 214.0  
 BACKG COLOR: Green COPY COLOR: White  
 SYMBOL X Y WID HT  
 MATL: 0.125" (3.2 mm) ALUMINUM

DESIGN BY: MT CHECKED BY: Feb 07, 2023  
 PROJECT ID: I-5941 LOCATION: DIV: 5

USE NOTES:  
 1. Legend and border(except those that are colored black) shall be direct applied Grade C sheeting.  
 2. Background shall be Grade C reflective sheeting.

LETTER POSITIONS

Letter spacings are to start of next letter															Series/Size Text Length					
N	o	r	t	h	C	a	r	o	l	i	n	a			EM 2000					
33.1	14.1	13.2	8.5	11.2	8.8	13.3	13.3	14.1	8.6	13.2	8	8	12.9	8.8	33.1	155.9				
C	e	n	t	r	a	l	U	n	i	v	e	r	s	i	t	y	EM 2000			
11.3	13.3	12.9	12.8	11.2	8.6	14.1	2.7	13.3	15.3	14.1	6.5	12.9	12.9	8.4	12.9	6.6	9.7	11.3	11.3	199.5
E	X	I	T	1	7	2														E 2000
71.2	8.9	10.7	3.5	7.5	15	7	14.7	12.2	71.3											79.5

I-5941 Map NORTH CAROLINA D.O.T. SIGN DETAIL

SIGN NUMBER: 1A, 2A, 3A TYPE: B QUANTITY: 3  
 SIGN WIDTH: 8'-0" HEIGHT: 2'-0" TOTAL AREA: 16.0 Sq.Ft.  
 BORDER TYPE: FLUSH RECESS: 0" WIDTH: 2" RADIUS: 3"  
 NO. Z BARS: 2 LENGTH: 88.0  
 BACKG COLOR: Green COPY COLOR: White  
 SYMBOL X Y WID HT  
 MATL: 0.125" (3.2 mm) ALUMINUM

DESIGN BY: MT CHECKED BY: Feb 07, 2023  
 PROJECT ID: I-5941 LOCATION: DIV: 5

USE NOTES:  
 1. Legend and border(except those that are colored black) shall be direct applied Grade A sheeting.  
 2. Background shall be Grade C reflective sheeting.  
 3. Shields; A, B, and C type arrows shall be on 0.032" (0.8mm) aluminum and demountable.

LETTER POSITIONS

Letter spacings are to start of next letter															Series/Size Text Length
E	X	I	T	1	7	2									E 2000
8.3	8.9	10.7	3.5	7.5	15	7.1	14.7	12.1	8.3						79.5

I-5941 Map NORTH CAROLINA D.O.T. SIGN DETAIL

SIGN NUMBER: 1B TYPE: A QUANTITY: 1  
 SIGN WIDTH: 23'-0" HEIGHT: 13'-0" TOTAL AREA: 299.0 Sq.Ft.  
 BORDER TYPE: FLUSH RECESS: 0" WIDTH: 2" RADIUS: 9"  
 NO. Z BARS: 4 LENGTH: 268.0  
 BACKG COLOR: Green COPY COLOR: White  
 SYMBOL X Y WID HT  
 MATL: 0.125" (3.2 mm) ALUMINUM

DESIGN BY: MT CHECKED BY: Feb 07, 2023  
 PROJECT ID: I-5941 LOCATION: DIV: 5

USE NOTES:  
 1. Legend and border(except those that are colored black) shall be direct applied Grade A sheeting.  
 2. Background shall be Grade C reflective sheeting.  
 3. Shields; A, B, and C type arrows shall be on 0.032" (0.8mm) aluminum and demountable.

LETTER POSITIONS

Letter spacings are to start of next letter															Series/Size Text Length									
S	O	U	T	H											E 2000									
133.6	12.2	2.3	12.8	11.8	11	9.7	82.6								59.8									
D	u	r	h	a	m										EM 2000									
89.7	17.8	17	11.8	15.5	17	17.6	89.7								96.6									
D	O	W	N	T	O	W	N								E 2000									
89.3	12.1	11.8	14.8	11.8	10.7	11.8	14.8	9.7	89.3						97.3									
R	e	s	e	a	r	c	h	T	r	i	a	n	g	l	e	P	a	r	k	EM 2000				
6.4	15	12.8	13	13	15	9.7	14	10.6	8	14.5	10.7	6.7	15	14	15	6.7	10.6	8	14.6	15	10.7	10.6	6.4	263.3
1	M	I	L	E																				E 2000
111.7	4.5	15	12	4.4	9.2	7.5	111.7																	52.6

I-5941 Map NORTH CAROLINA D.O.T. SIGN DETAIL

SIGN NUMBER: 101 TYPE: A QUANTITY: 1  
 SIGN WIDTH: 20'-0" HEIGHT: 4'-6" TOTAL AREA: 90.0 Sq.Ft.  
 BORDER TYPE: FLUSH RECESS: 1" WIDTH: 2" RADIUS: 6"  
 NO. Z BARS: 2 LENGTH: 232.0  
 BACKG COLOR: Green COPY COLOR: White  
 SYMBOL X Y WID HT  
 MATL: 0.125" (3.2 mm) ALUMINUM

DESIGN BY: MT CHECKED BY: Mar 07, 2023  
 PROJECT ID: I-5941 LOCATION: DIV: 5

USE NOTES:  
 1. Legend and border(except those that are colored black) shall be direct applied Grade C sheeting.  
 2. Background shall be Grade C reflective sheeting.

LETTER POSITIONS

Letter spacings are to start of next letter															Series/Size Text Length					
D	u	k	e	/	v	a	M	e	d	C	t	r	s		EM 2000					
21.7	14.8	14.1	11.7	10.2	14.8	13.3	13.4	13.3	15.7	11.7	8.8	13.3	13.2	11.2	8.4	8.8	21.7	196.6		
E	X	I	T	1	7	2														E 2000
80.2	8.9	10.7	3.5	7.5	15	7.1	14.7	12.2	80.3											79.5

I-5941 Map NORTH CAROLINA D.O.T. SIGN DETAIL

08/03/23  
 U:\I-5941\I-5941 Map.dgn  
 User:mmTracey

# SIGN DESIGNS