

TIP NO.	SHEET NO.
I-5941	DocuSigned by: SIGN-1B
APPROVED:	<i>Matthew V. Springer</i>
DATE:	3/21/2019
SEAL	BC80F6E9B584403...

STATE OF NORTH CAROLINA  
 DEPT. OF TRANSPORTATION  
 DIVISION OF HIGHWAYS  
 RALEIGH, N.C.

2-19

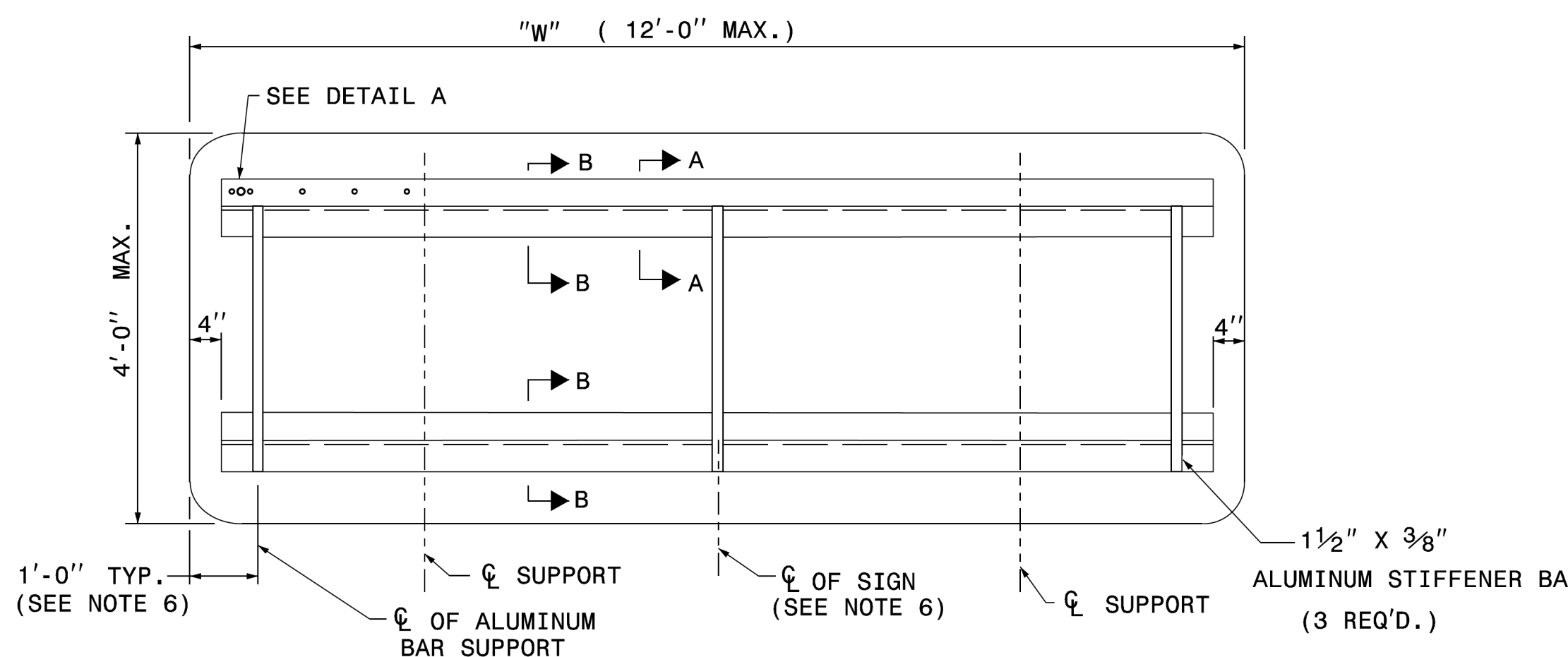
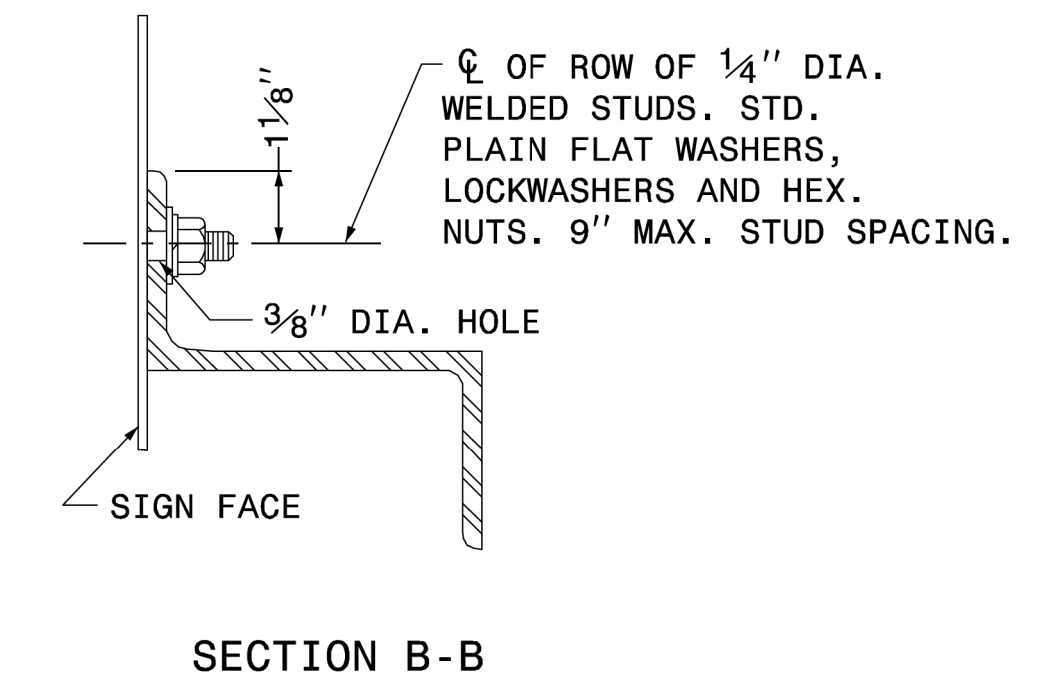
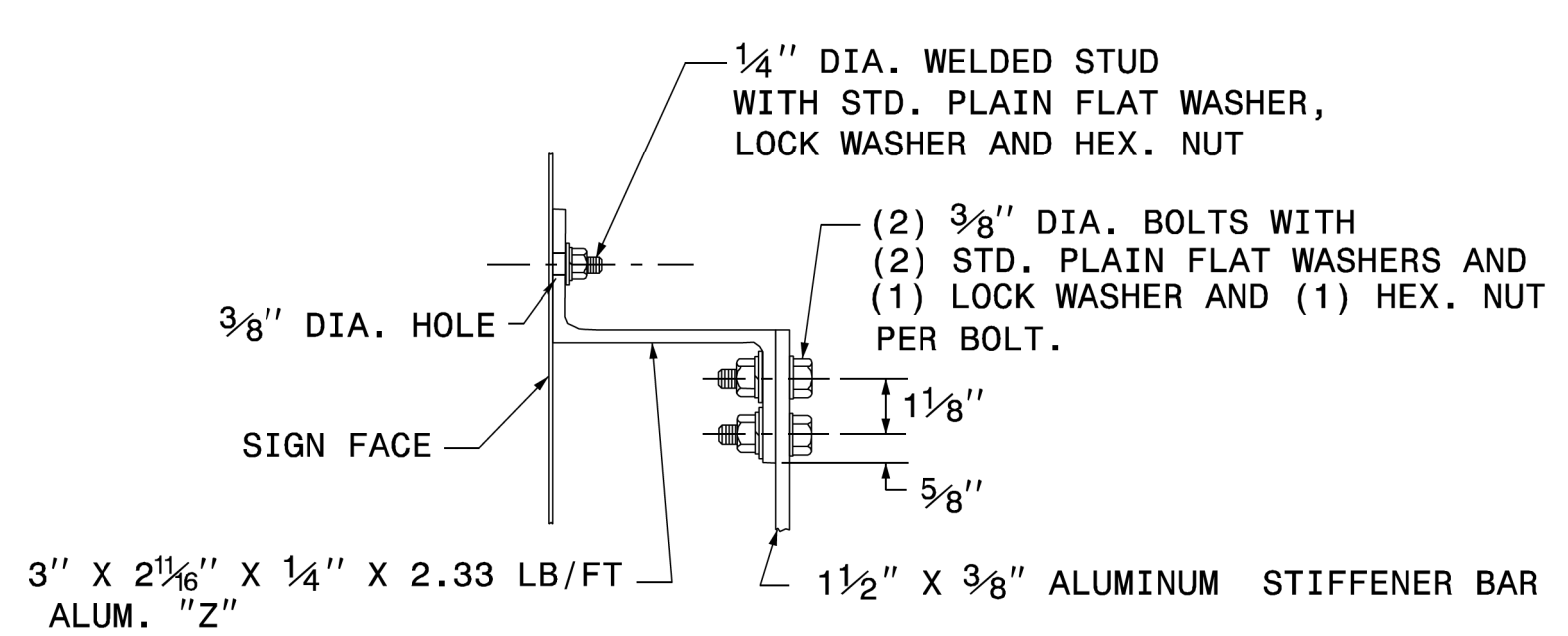
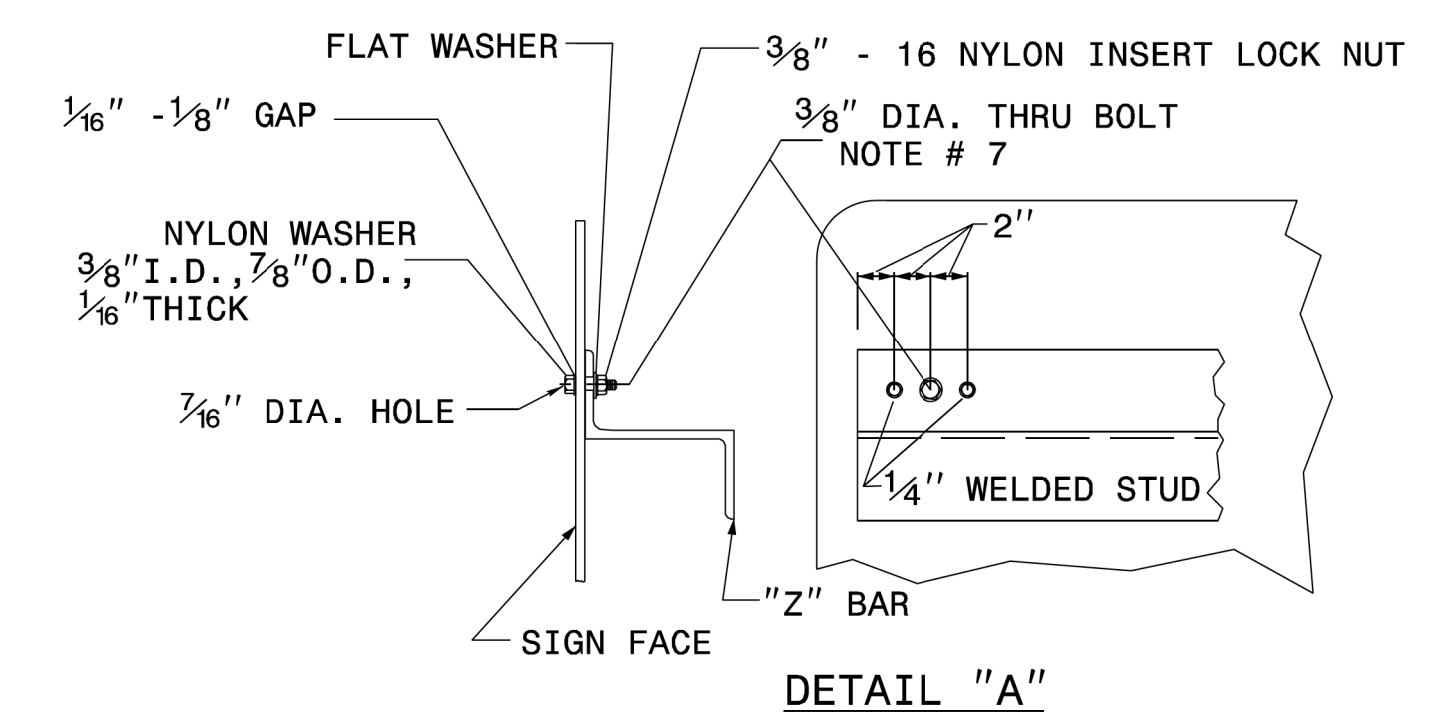
ENGLISH DETAIL DRAWING FOR  
**TYPE 'B' SIGNS**  
 WELDED STUD CONSTRUCTION

STATE OF NORTH CAROLINA  
 DEPT. OF TRANSPORTATION  
 DIVISION OF HIGHWAYS  
 RALEIGH, N.C.

2-19

ENGLISH DETAIL DRAWING FOR  
**TYPE 'B' SIGNS**  
 WELDED STUD CONSTRUCTION

SHEET 1 OF 1  
**901D20**



- NOTES:**
1. USE NUMBER AND SIZE OF SUPPORTS SHOWN ON SUPPORT CHART IN PROJECT PLAN SHEETS.
  2. SEE NCDOT STANDARD SPECIFICATIONS FOR ROADS AND STRUCTURES FOR THE TYPE OF MATERIAL TO BE USED FOR SIGN PANELS, HANGER ASSEMBLIES AND SUPPORTS.
  3. FURNISH ALL MOUNTING HARDWARE.
  4. USE GALVANIZED STEEL FOR BACKING PLATES AND MOUNTING BOLTS.
  5. THE VERTICAL DIMENSION BETWEEN PRIMARY AND SECONDARY SIGNS IS TWO (2) INCHES.
  6. ADJUST STIFFENERS TO AVOID CONFLICT WITH SUPPORTS.
  7. FABRICATE EACH SIGN WITH A 3/8" DIA. BOLT 4" FROM EACH END OF EACH "Z" BAR THRU SIGN PANEL AND "Z" BAR.
  8. SEE ROADWAY STANDARD 901.70 FOR SUPPORT AND "Z" BAR SPACING.
  9. SEE ROADWAY STANDARD 901.80 FOR DETAILS SHOWING SIGN MOUNTING TO SUPPORTS.
  10. PLACE NYLON WASHER UNDER HEAD OF 3/8" THRU BOLT.
  11. THRU BOLTS WILL HAVE A MINIMUM 1/16" TO MAXIMUM 1/8" GAP.

03/20/19 S:\S&DU\Standards and Drawings\Drawings\2018 Standard Dwgs\Division 9 Final\0901d20.sgn\_type b sign\_2-19.dgn User:dstokes

**REVISED SIGNING  
 ROADWAY STANDARD DRAWING**