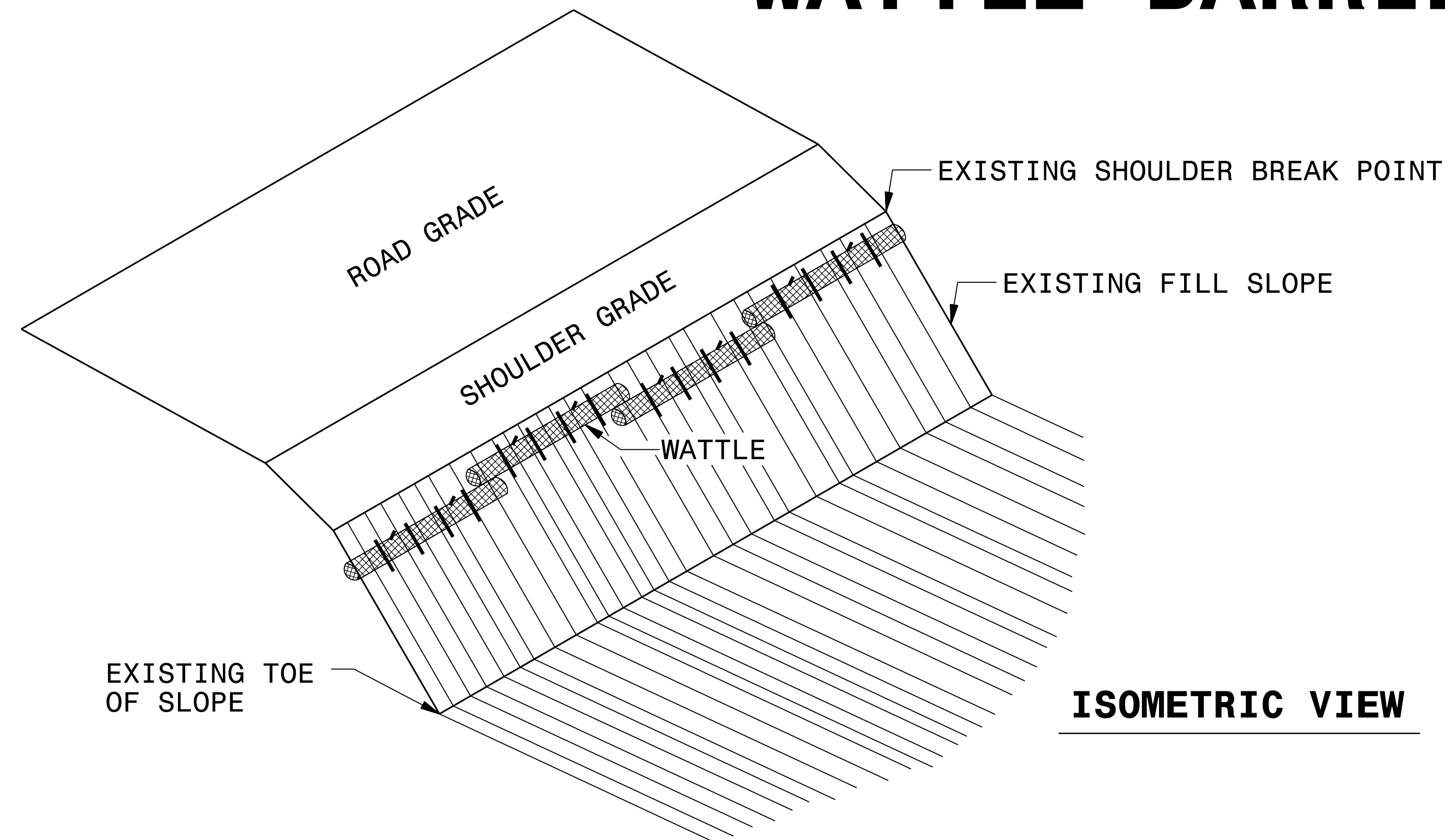


WATTLE BARRIER DETAIL



ISOMETRIC VIEW

NOTES

USE MINIMUM 18 IN. NOMINAL DIAMETER EXCELSIOR WATTLE AND LENGTH OF 10 FT.

WHEN WATTLE BARRIERS ARE USED ON SLOPES TO REDUCE RUNOFF VELOCITY, 9" DIAMETER WATTLES MAY BE USED.

EXCAVATE A 2 TO 3 INCH TRENCH FOR WATTLE TO BE PLACED.

DO NOT PLACE WATTLES ABOVE SHOULDER BREAK POINT OR ON TOE OF SLOPE.

USE 2 FT. WOODEN STAKES WITH A 2 IN. BY 2 IN. NOMINAL CROSS SECTION.

INSTALL A MINIMUM OF 2 UPSLOPE STAKES AND 4 DOWNSLOPE STAKES AT AN ANGLE TO WEDGE WATTLE TO GROUND.

PROVIDE STAPLES MADE OF 11 GAUGE STEEL WIRE FORMED INTO A U SHAPE NOT LESS THAN 6" IN LENGTH.

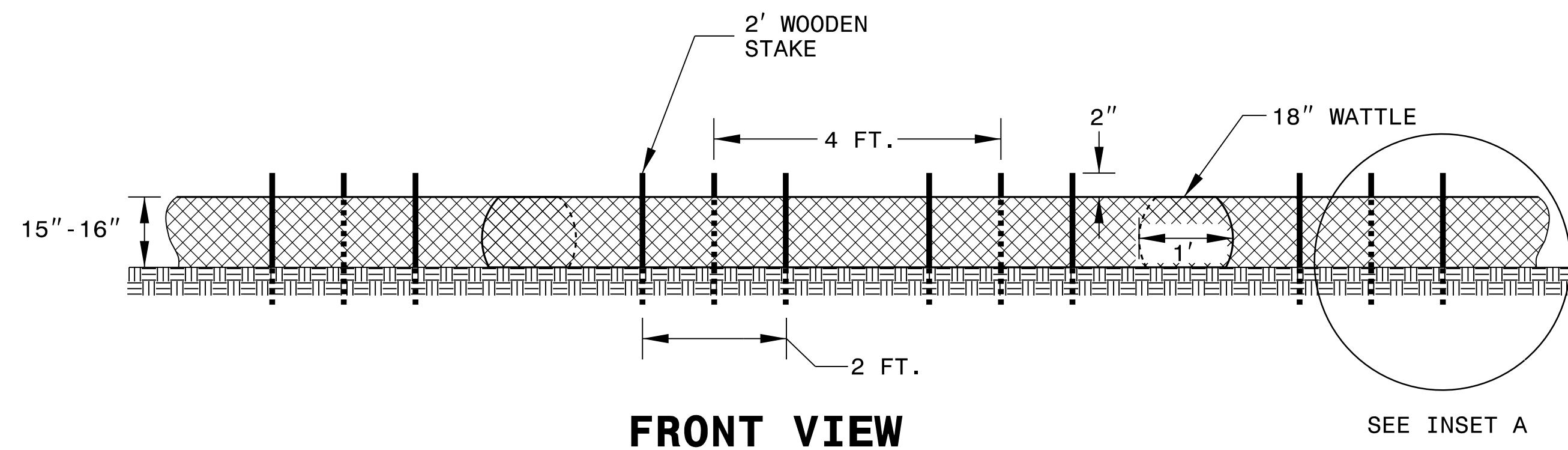
INSTALL STAPLES APPROXIMATELY EVERY 1 LINEAR FOOT ON BOTH SIDES OF WATTLE AND AT EACH END TO SECURE IT TO THE SOIL.

FOR BREAKS ALONG LARGE SLOPES, USE MAXIMUM SPACING OF 25 FT.

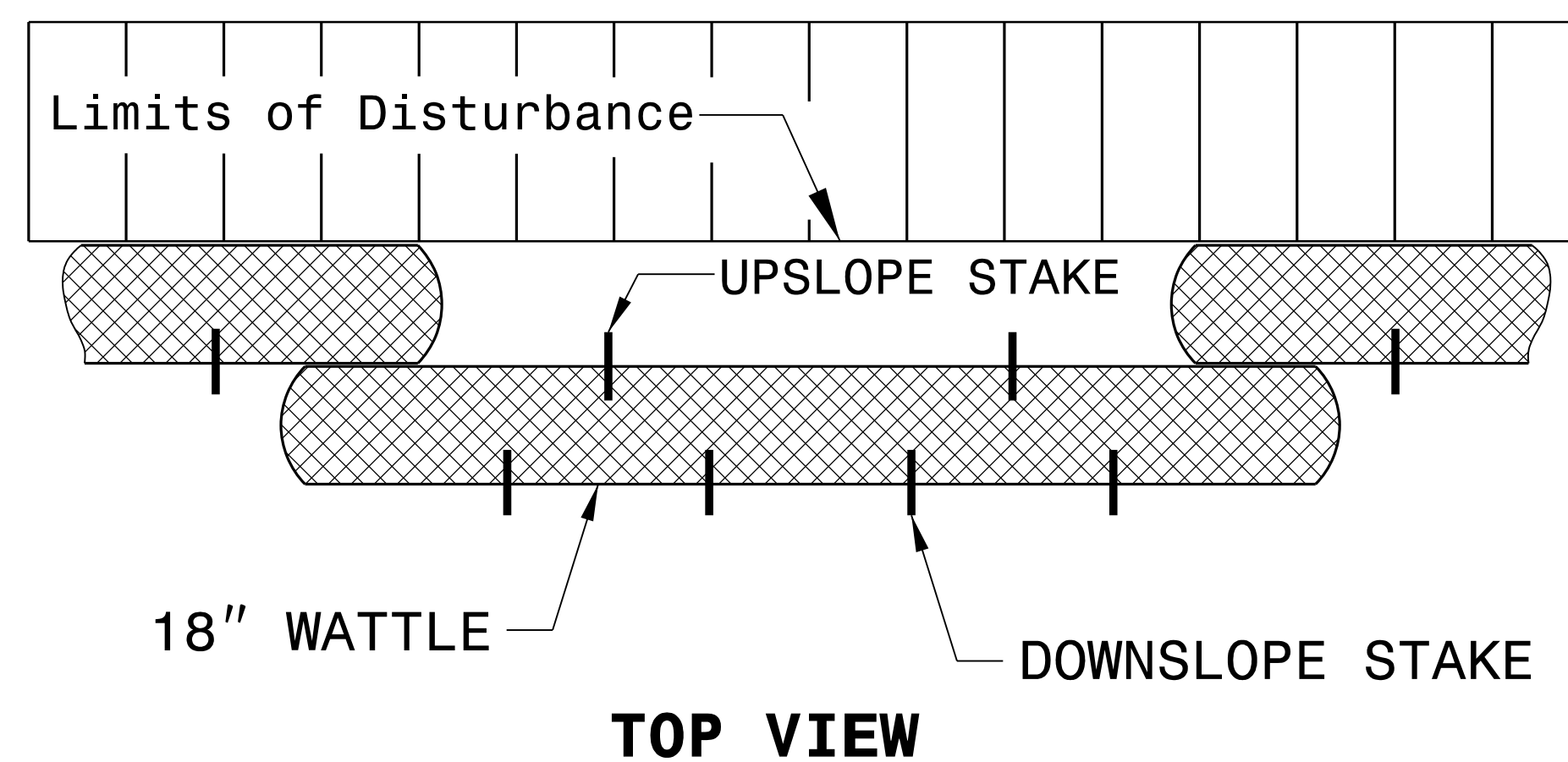
REMOVE WATTLE BARRIERS WHEN ADEQUATE GROUND COVER VEGETATION HAS BEEN ESTABLISHED AS DIRECTED BY THE ENGINEER.

WATTLE BARRIER LOCATIONS

INSTALL WATTLE BARRIERS WHERE CLEARING VEGETATION OR SHOULDER GRADING OCCUR ON OR ADJACENT TO FILL SLOPES, AND AS DIRECTED BY THE ENGINEER.



FRONT VIEW



TOP VIEW

PLACE TOP OF WATTLE BARRIERS BELOW SHOULDER BREAK POINT ELEVATION

EXISTING SHOULDER BREAK POINT

SHOULDER GRADE

EXISTING SLOPE

INSET A

2" - 3" TRENCH